



PARTS CATALOGUE

YDRAX4F (JC22) U.S.A., CANADA



1NJC2-110E1

()

YDRAX4F
PARTS CATALOGUE
©2013 by Yamaha Motor Co., Ltd.
1st edition, June 2013
All rights reserved.
Any reprinting or unauthorized use
without the written permission of
Yamaha Motor Co., Ltd.
is expressly prohibited.
Printed in Japan.

FOREWORD

This Parts Catalogue is related to the parts for the model(s) on the cover page. When you are ordering replacement parts, please refer to this Parts Catalogue and quote both part numbers and part names correctly.

1. Modifications or additions which have been made after the issue of the Parts Catalogue will be announced in the Parts News.

It is advisable that you make the necessary corrections to the Parts Catalogue according to the Parts News.

2. Abbreviations

The following abbreviations are used in this Parts Catalogue.

“UR” Use specified parts number.

“UN” Use as many as needed.

“AP” Alternate Parts

“LM” Locally Made (Parts need to be ordered locally)

“F#” Frame No. (Applicable machine No.)

“O/S” Over Size

3. The number of components for assembly

- Parts, which are to be supplied in an assembly, are listed with a dot (.) in front of the part name as shown below.
- The numeral appearing to the right of each component part indicates the quantity of parts for each assembly unit.

PART NO.	DESCRIPTION	Q'TY	REMARKS
2F5-83310-60	FRONT FLASHER LIGHT ASSY	2	
115-83311-60	.BULB (6V-18W)	1	

4. Applicable colours of graphics are represented in the “REMARKS” as shown below.

PART NO.	DESCRIPTION	Q'TY	REMARKS
2N4-24110-00-X5	FUEL TANK COMP.	2	MXR
3J1-24240-10	.GRAPHIC, FUEL TANK	1	FOR MXR

5. Note that the illustrations for reference in finding parts numbers are not to be used for assembling. When assembling, please use the applicable service manual.

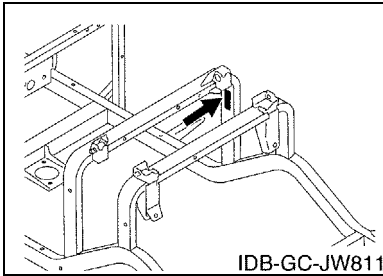
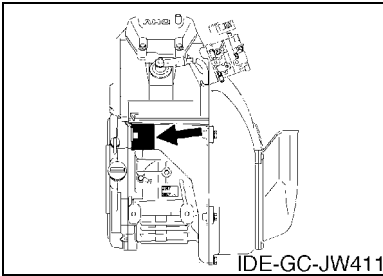
6. The asterisk (*) before a reference number indicates modified items after the first edition.

FOREWORD

7. Applicable Serial No.

Engine Serial No.

Frame Serial No.



10. Applicable Starting Serial No.

Frame Serial No.

Serial No.	Name Of Q'ty Column	Model Code
JC2-100101	JC22	JC22

8. Applicable Colour Code (The (*) mark shows Model colour.)

Abbreviation	Colour Name	Colour Code
BMG(*)	BLACK METALLIC G	1050
DPBST(*)	DARK PURPLISH BLUE SOLID T	1220
HTR(*)	HEAT RED	00EY
LNMP(*)	LIGHT GRAY METALLIC P	0925
LN YM8(*)	LIGHT GRAYISH YELLOW ME 8	1047
VDGS1(*)	VERY DARK GREEN SOLID 1	0614
WS7(*)	WHITE SOLID 7	1045

9. Quantity Column Information

Column No.	Name Of Q'ty Column	Destination
1	JC22	U.S.A., CANADA

CONTENTS

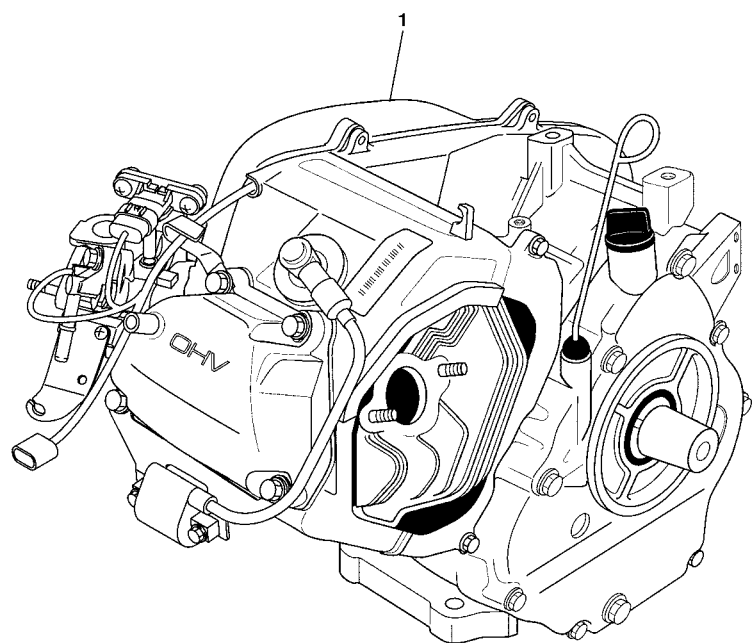
ENGINE 1	1
ENGINE	
CYLINDER HEAD	2
CRANKSHAFT & PISTON	3
CAMSHAFT & VALVE	4
AIR SHROUD & FAN	5
INTAKE 1	6
INTAKE 2	7
EXHAUST	8
CRANKCASE	9
BODY	
ENGINE BRACKET	10
REAR ARM & SUSPENSION	11
FRAME	12
FRONT SUSPENSION	13
STEERING	15
FUEL TANK	17
PEDAL ASSEMBLY	18
GOVERNOR	21
DRIVE	
PRIMARY SHEAVE	22
SECONDARY SHEAVE	23
TRANSAXLE & BRAKE	24
SHIFTER & CABLES	27
WHEEL	28
BUMPER	29
BODY	30
BODY 2	32
BODY FITTING	33
CARRIER	34
SEAT	35
ELECTRICAL	
STARTING MOTOR	36
ELECTRICAL 1	38
ELECTRICAL 2	40
ALTERNATE FOR SUN ROOF	42

INDEX

NUMERICAL INDEX	43
-----------------------	----

FIG. 1 ENGINE 1

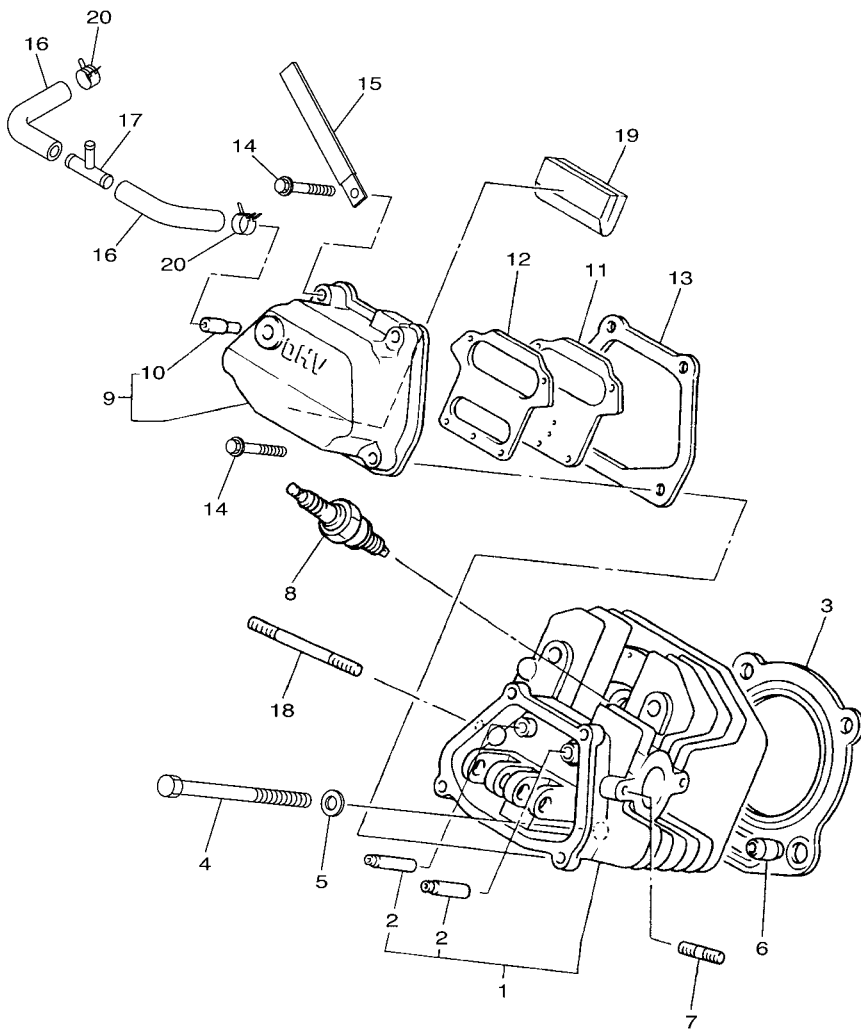
REF. NO.	PART NO.	DESCRIPTION	JC22				REMARKS
1	JC0-19001-40	ENGINE ASSEMBLY	1				



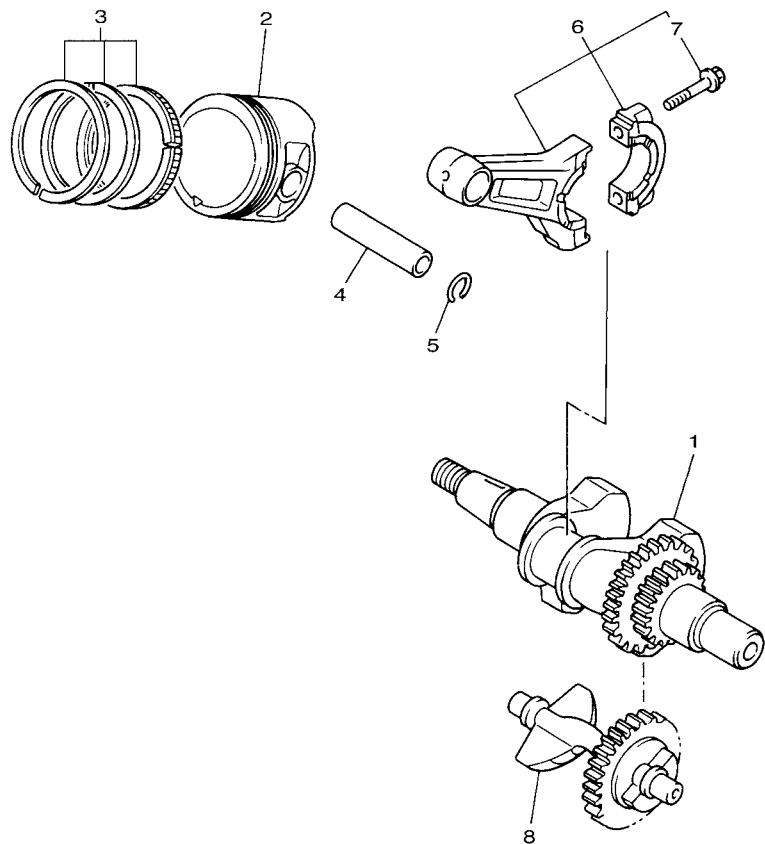
 JC04110-L010

FIG. 2 CYLINDER HEAD

REF. NO.	PART NO.	DESCRIPTION	JC22				REMARKS
1	JT0-11111-00	HEAD, CYLINDER 1	1				
2	JN6-11133-10	.GUIDE, VALVE 1	2				
3	JT0-11181-00	GASKET, CYLINDER HEAD 1	1				
4	97012-10070	BOLT	4				
5	90201-10057	WASHER, PLATE	4				
6	99530-14016	PIN, DOWEL	2				
7	95622-08618	BOLT, STUD	2				
8	94702-00348	PLUG, SPARK (NGK-BPR2ES)	1				STD
	94702-00343	PLUG, SPARK (NGK BP4ES)	1				AP
9	JN6-11191-01	COVER, CYLINDER HEAD 1	1				
10	JN6-11116-00	.JOINT, BREATHER	1				
11	JN6-11168-00	COVER, BREATHER	1				
12	JN6-11169-00	GASKET, BREATHER COVER	1				
13	JN6-11193-00	GASKET, HEAD COVER 1	1				
14	95822-06030	BOLT, FLANGE	4				
15	90462-05061	CLAMP	1				
16	JW1-E1166-00	PIPE, BREATHER 1	2				
17	JW1-E1116-00	JOINT, BREATHER	1				
18	95602-08710	BOLT, STUD	2				
19	JR7-11163-10	ELEMENT	1				
20	90467-13847	CLIP	2				



JC04110-L020



JN7010-6021

FIG. 3 CRANKSHAFT & PISTON

REF. NO.	PART NO.	DESCRIPTION	JC22				REMARKS
1	JN6-11400-00	CRANKSHAFT ASSY	1				
2	JR7-11631-00-A0	PISTON (STD)	1				
	JR7-11635-00	PISTON (0.25MM O/S)	1				AP
	JR7-11636-00	PISTON (0.50MM O/S)	1				AP
3	JR7-11610-00	PISTON RING SET (STD)	1				
	JR7-11610-10	PISTON RING SET (0.25MM O/S)	1				AP
	JR7-11610-20	PISTON RING SET (0.50MM O/S)	1				AP
4	583-11633-00	PIN, PISTON	1				
5	93450-21053	CIRCLIP	2				
6	JN6-11650-10	CONNECTING ROD ASSY	1				
7	JN6-11654-10	BOLT, CONNECTING ROD	2				
8	JN6-11454-10	WEIGHT 1	1				

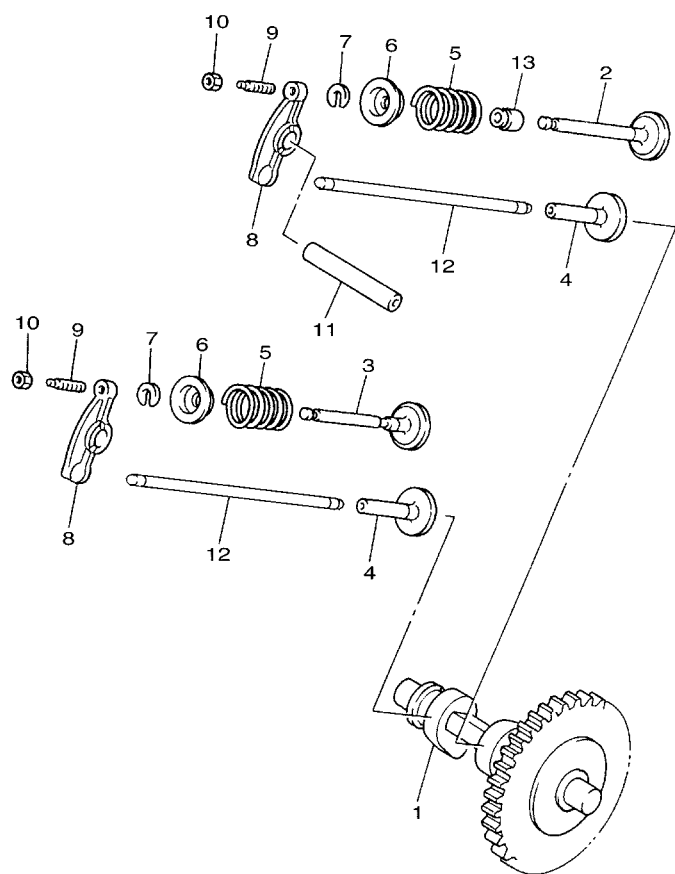
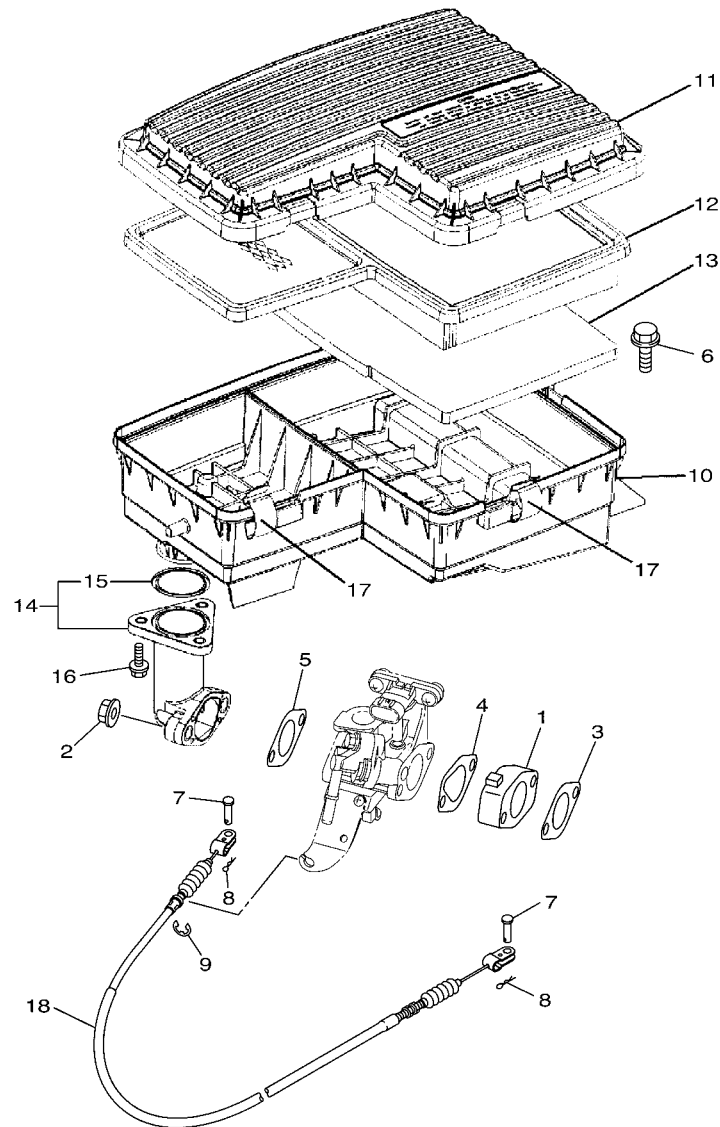


FIG. 4 CAMSHAFT & VALVE

REF. NO.	PART NO.	DESCRIPTION	JC22				REMARKS
1	JR7-12170-00	CAMSHAFT ASSY 1	1				
2	JN6-12111-10	VALVE, INTAKE	1				
3	7RH-12121-10	VALVE, EXHAUST	1				
4	JN6-12153-10	LIFTER, VALVE	2				
5	90501-264A9	SPRING, COMPRESSION	2				
6	J38-12117-01	RETAINER, VALVE SPRING	2				
7	J38-12118-00	LOCK, VALVE SPRING RETAINER	2				
8	JN6-12151-10	ARM, VALVE ROCKER	2				
9	22F-12159-10	SCREW, VALVE ADJUSTING	2				
10	90170-05302	NUT	2				
11	J38-12156-20	SHAFT, ROCKER 2	1				
12	JR7-12154-10	ROD, VALVE PUSH	2				
13	4G0-12119-00	SEAL, VALVE STEM	1				



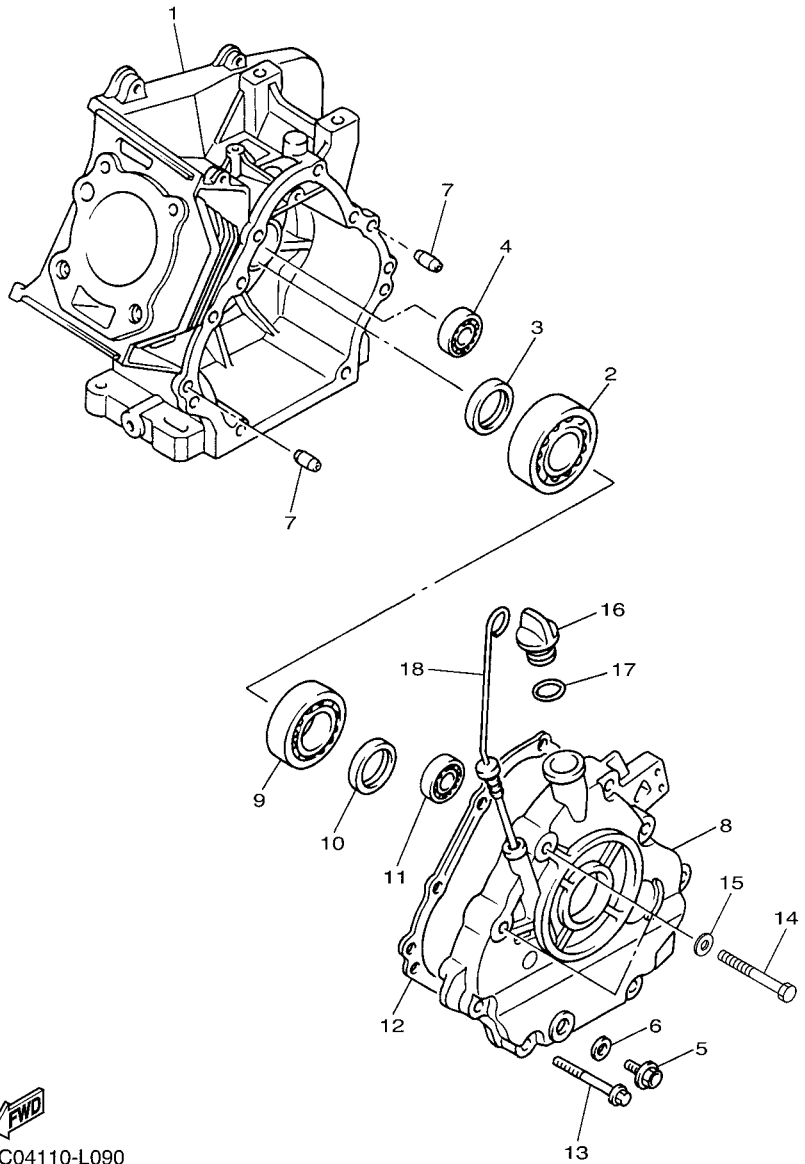
JD13110-K030



JC04110-L060

FIG. 6 INTAKE 1

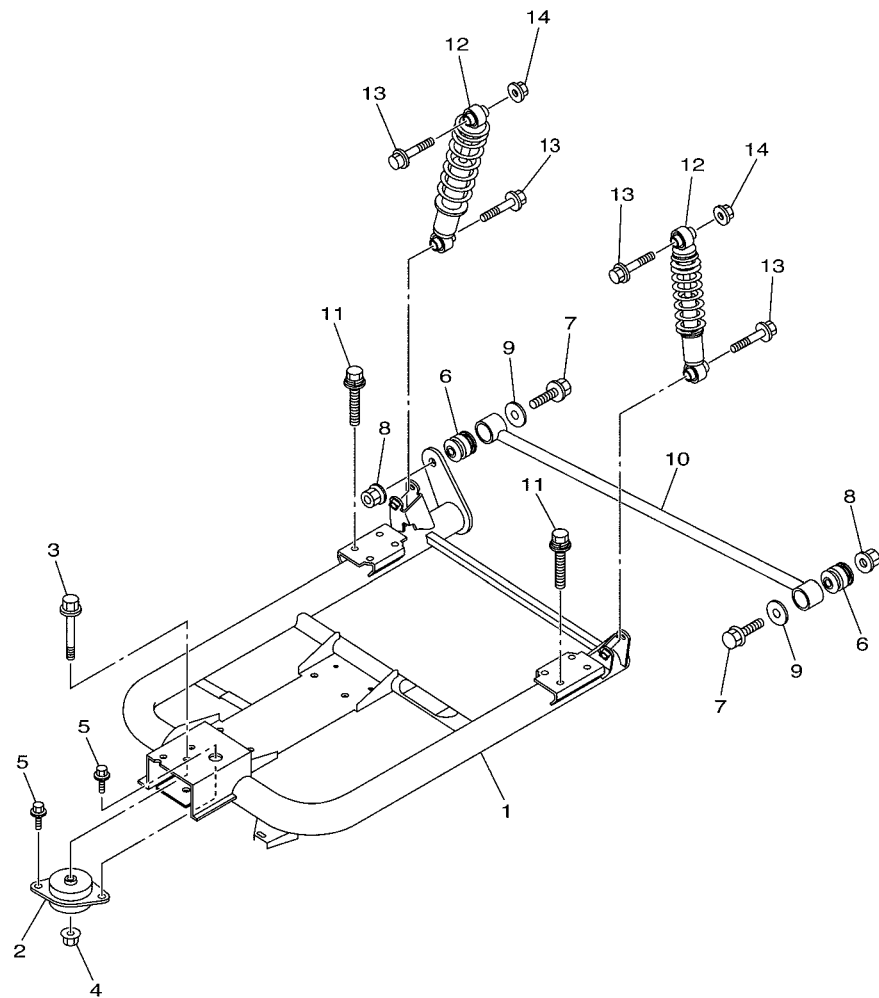
REF. NO.	PART NO.	DESCRIPTION	JC22				REMARKS
1	JC0-13595-00	JOINT	1				
2	95702-08500	NUT, FLANGE	2				
3	JN6-13567-00	GASKET	1				
4	JC0-13567-00	GASKET	1				
5	JN6-13567-00	GASKET	1				
6	90119-06884	BOLT, WITH WASHER	2				
7	91702-05010	PIN, CLEVIS	2				
8	90468-10049	CLIP	2				
9	99001-07600	CIRCLIP	1				
10	JU0-E4411-00	CASE, AIR CLEANER 1	1				
11	JU0-E4412-00	CAP, CLEANER CASE 1	1				
12	JU0-E4450-00	ELEMENT ASSY, AIR CLEANER	1				
13	JU0-E445E-00	FILTER 1	1				
14	JU0-E3505-09	JOINT COMP.	1				
15	93210-398D6	.O-RING	1				
16	90105-06862	BOLT, FLANGE	3				
17	5UH-E4424-00	CLIP, CAP FITTING	5				
18	JC0-F6312-01	CABLE, THROTTLE 2	1				



JC04110-L090

FIG. 9 CRANKCASE

REF. NO.	PART NO.	DESCRIPTION	JC22				REMARKS
1	JC0-15111-00	CRANKCASE 1	1				
2	93306-30709	BEARING	1				
3	93102-35014	OIL SEAL	1				
4	93306-20201	BEARING	1				
5	90340-12097	PLUG, STRAIGHT SCREW	1				
6	812-11198-00	GASKET	1				
7	99530-08016	PIN, DOWEL	2				
8	JN6-15411-01	COVER, CRANKCASE 1	1				
9	93306-20714	BEARING	1				
10	93102-35014	OIL SEAL	1				
11	93306-20201	BEARING	1				
12	JY2-15451-00	GASKET, CRANKCASE COVER 1	1				
13	95812-08045	BOLT, FLANGE	6				
14	97012-10050	BOLT	2				
15	90201-10057	WASHER, PLATE	2				
16	796-15363-01	PLUG, OIL	1				
17	93210-22344	O-RING	1				
18	J38-15361-00	GAUGE, LEVEL	1				

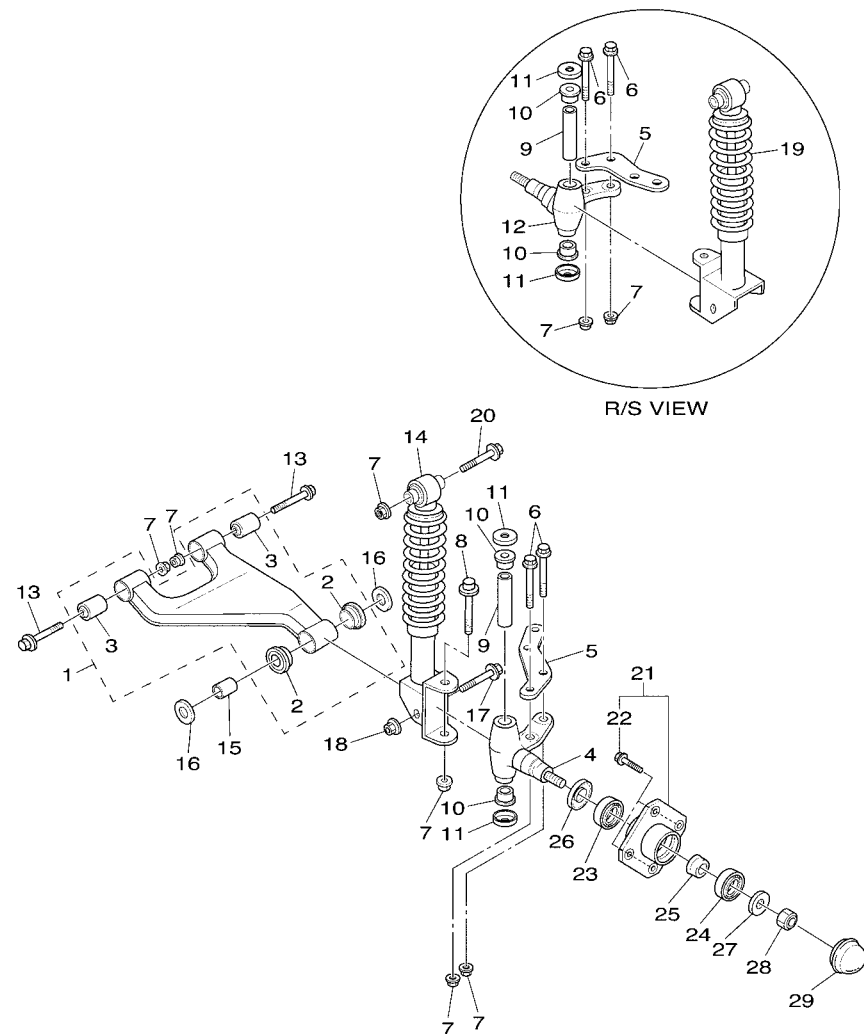


JC06110-N110

FIG. 11 REAR ARM & SUSPENSION

REF. NO.	PART NO.	DESCRIPTION	JC22				REMARKS
1	JW1-F2110-12	REAR ARM COMP.	1				
2	JN6-F2123-10	BUSH 1	1				
3	90105-13800	BOLT, FLANGE	1				
4	90179-13800	NUT	1				
5	90119-10044	BOLT, WITH WASHER	2				
6	JN6-F2124-10	BUSH 2	2				
7	95812-12065	BOLT, FLANGE	2				
8	95602-12200	NUT, SELF-LOCKING	2				
9	90201-128S4	WASHER, PLATE	2				
10	JW1-F217G-10	ROD, CONNECTING 2	1				
11	JW1-F2277-00	BOLT	8				
12	JW1-F2210-10	SHOCK ABSORBER ASSY, REAR	2				
13	95812-10055	BOLT, FLANGE	4				
14	95602-10200	NUT, U FLANGE	2				

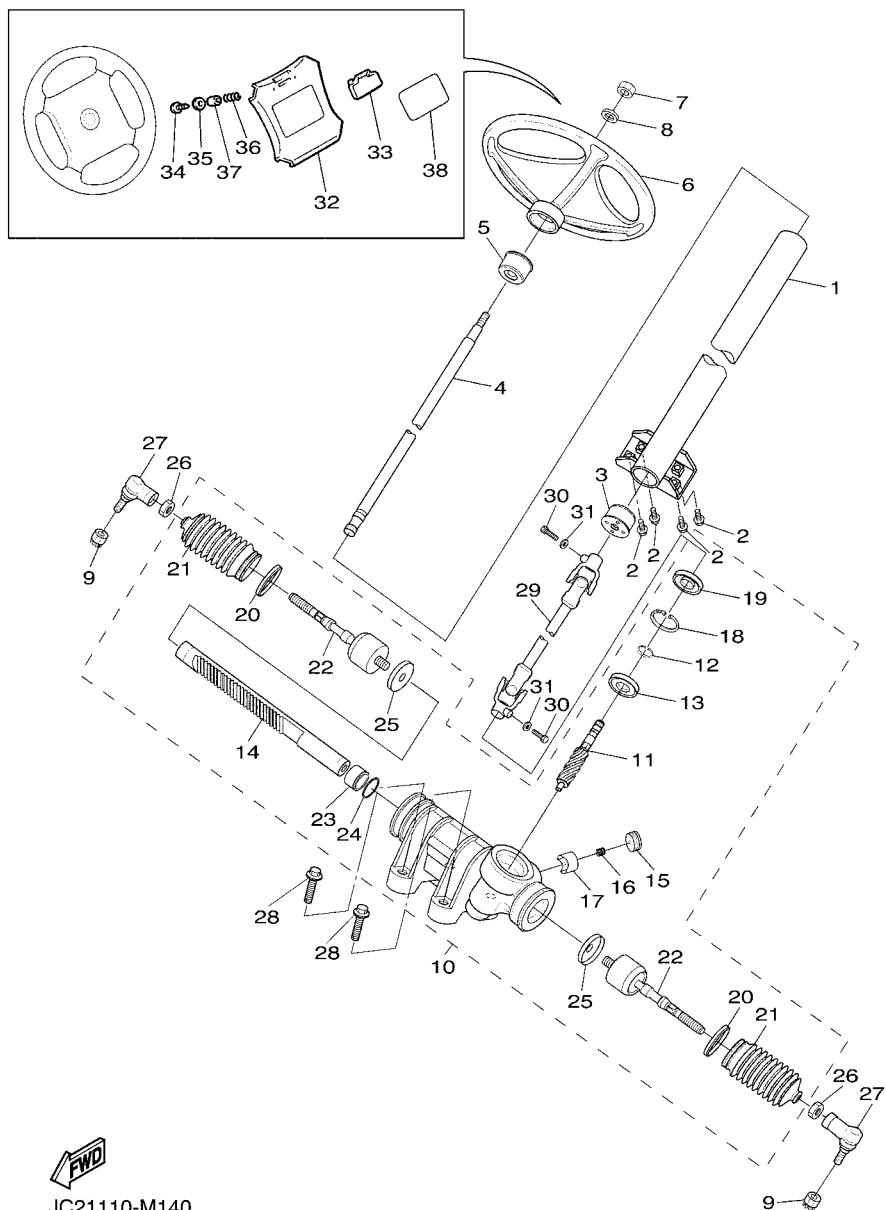
FIG. 13 FRONT SUSPENSION



JC06110-N130

REF. NO.	PART NO.	DESCRIPTION	JC22				REMARKS
1	JU0-F3570-20	FRONT LOWER ARM COMP.	2				
2	90381-18001	.BUSH, SOLID	2				
3	2HR-23526-00	.BUSH	2				
4	JU0-F3511-10	KNUCKLE, STEERING 1	1				
5	JW1-F3512-00	ARM, KNUCKLE 1	2				
6	90105-10373	BOLT, FLANGE	4				
7	95602-10200	NUT, U FLANGE	12				
8	90105-10219	BOLT, FLANGE	2				
9	2NL-23448-00	SPACER	2				
10	90381-17067	BUSH, SOLID	4				
11	2NL-23517-00	COVER, THRUST 1	4				
12	JU0-F3521-10	KNUCKLE, STEERING 2	1				
13	90105-10267	BOLT, FLANGE	4				
14	JW1-F3350-10	SHOCK ABSORBER ASSY	1				
15	90387-12016	COLLAR	2				
16	401-22128-01	COVER, THRUST 1	4				
17	95812-12080	BOLT, FLANGE	2				
18	95612-12100	NUT, U	2				
19	JW1-F3390-10	SHOCK ABSORBER ASSY 2	1				
20	90105-10267	BOLT, FLANGE	2				
21	JG5-WF511-10	HUB, FRONT	2				
22	90114-12806	.BOLT, SERRATION	4				
23	93306-204X0	BEARING	2				
24	93306-005Y3	BEARING	2				
25	90387-241M7	COLLAR	2				
26	93102-30083	OIL SEAL	2				
27	90208-14801	WASHER, CONICAL SPRING	2				

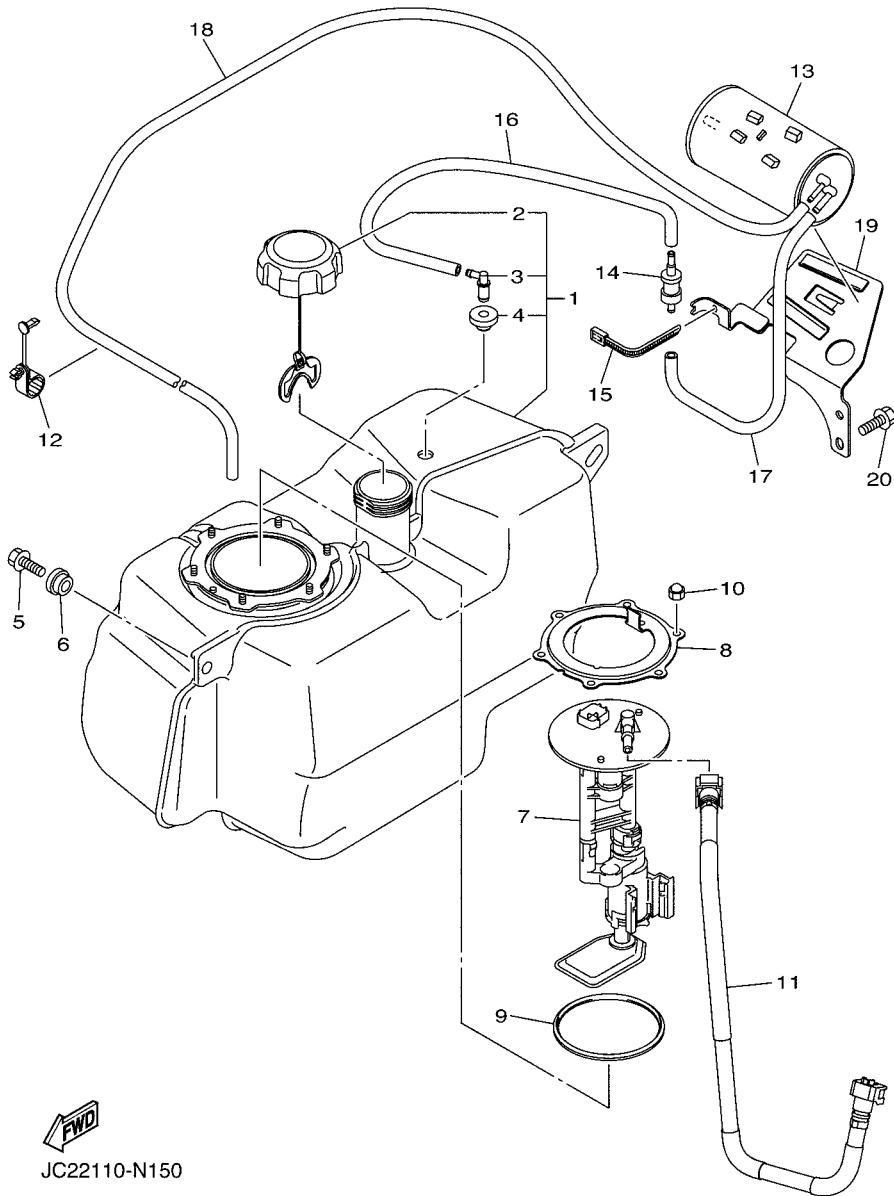
FIG. 14 STEERING



REF. NO.	PART NO.	DESCRIPTION	JC22				REMARKS
1	JW1-F3811-02	COLUMN, STEERING	1				
2	95812-08020	BOLT, FLANGE	4				
3	JU0-F3857-11	HOLDER	1				
4	JU0-F3828-10	ROD, STEERING	1				
5	JU0-F3857-11	HOLDER	1				
6	JN3-F3838-00	WHEEL, STEERING	1				
7	90185-12008	NUT, SELF-LOCKING	1				
8	92902-12200	WASHER	1				
9	95602-12200	NUT, SELF-LOCKING	2				
10	JW1-F3400-00	STEERING ASSY	1				
11	JW1-F387A-00	.GEAR, PINION	1				
12	JW1-F3183-00	.CIRCLIP	1				
13	JW1-F3812-00	.BEARING, STEERING	1				
14	JW1-F387E-00	.GEAR, RACK	1				
15	5UG-F387G-00	.COVER, ADJUST	1				
16	5UG-F387K-00	.SPRING, PRESSURE	1				
17	5UG-F387F-00	.PAD, PRESSURE	1				
18	5UG-F387J-00	.RING, STOPPER	1				
19	5UG-F3844-00	.SEAL	1				
20	5UG-F3489-00	.BAND	2				
21	5UG-F3527-00	.SEAL, DUST 1	2				
22	JW1-F3837-00	.ROD, TIE 2	2				
23	JW1-F467K-00	.BUSH, CAP	1				
24	JW1-F3866-00	.CIRCLIP	1				
25	JW1-F3894-00	.WASHER, LOCK 1	2				
26	1P0-F3833-00	NUT 1	2				
27	JW8-23841-00	JOINT, UNIVERSAL 1	2				

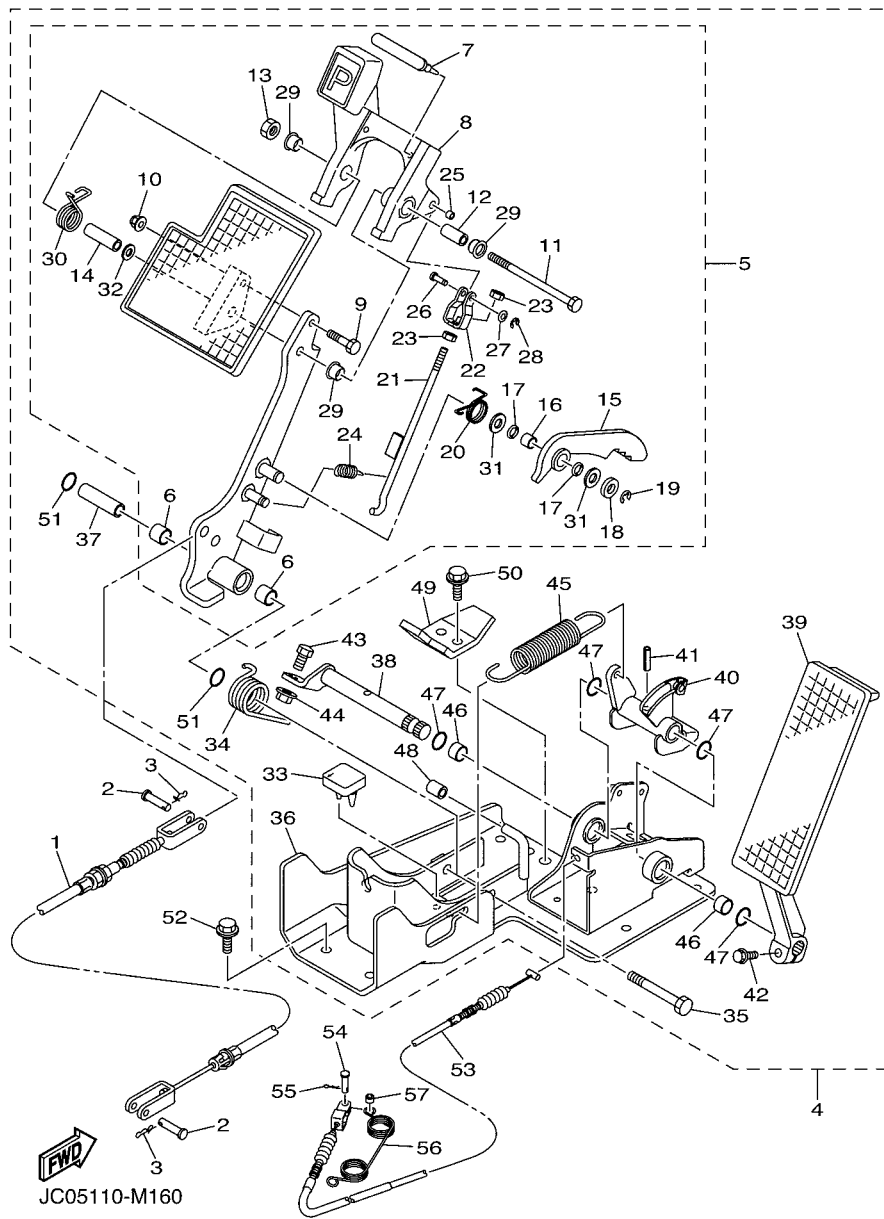
FIG. 15 FUEL TANK

REF. NO.	PART NO.	DESCRIPTION	JC22				REMARKS
1	JC0-F4111-01	TANK, FUEL	1				
2	JW1-F4610-00	.CAP ASSY	1				
3	JW1-F4112-00	.PIPE	1				
4	JU5-F4375-00	.GROMMET	1				
5	JW1-F1738-00	BOLT	2				
6	90560-08251	SPACER	2				
7	JC0-13907-00	FUEL PUMP COMP.	1				
8	18P-24491-00	BRACKET, FUEL PUMP	1				
9	1S3-24486-00	O-RING	1				
10	95302-06800	NUT, CROWN	6				
11	JC0-13971-00	PIPE, FUEL 1	1				
12	JW7-F312H-00	CLAMP	1				
13	7CC-F4170-00	CANISTER ASSY	1				
14	4WM-24180-00	ROLL OVER VALVE ASSY	1				
15	90464-40825	CLAMP	1				
16	JW7-F4314-10	PIPE 4	1				
17	JW1-F4316-00	PIPE 6	1				
18	JW1-F4317-00	PIPE 7	1				
19	JW1-F419A-10	HOLDER	1				
20	JW1-F1738-00	BOLT	2				



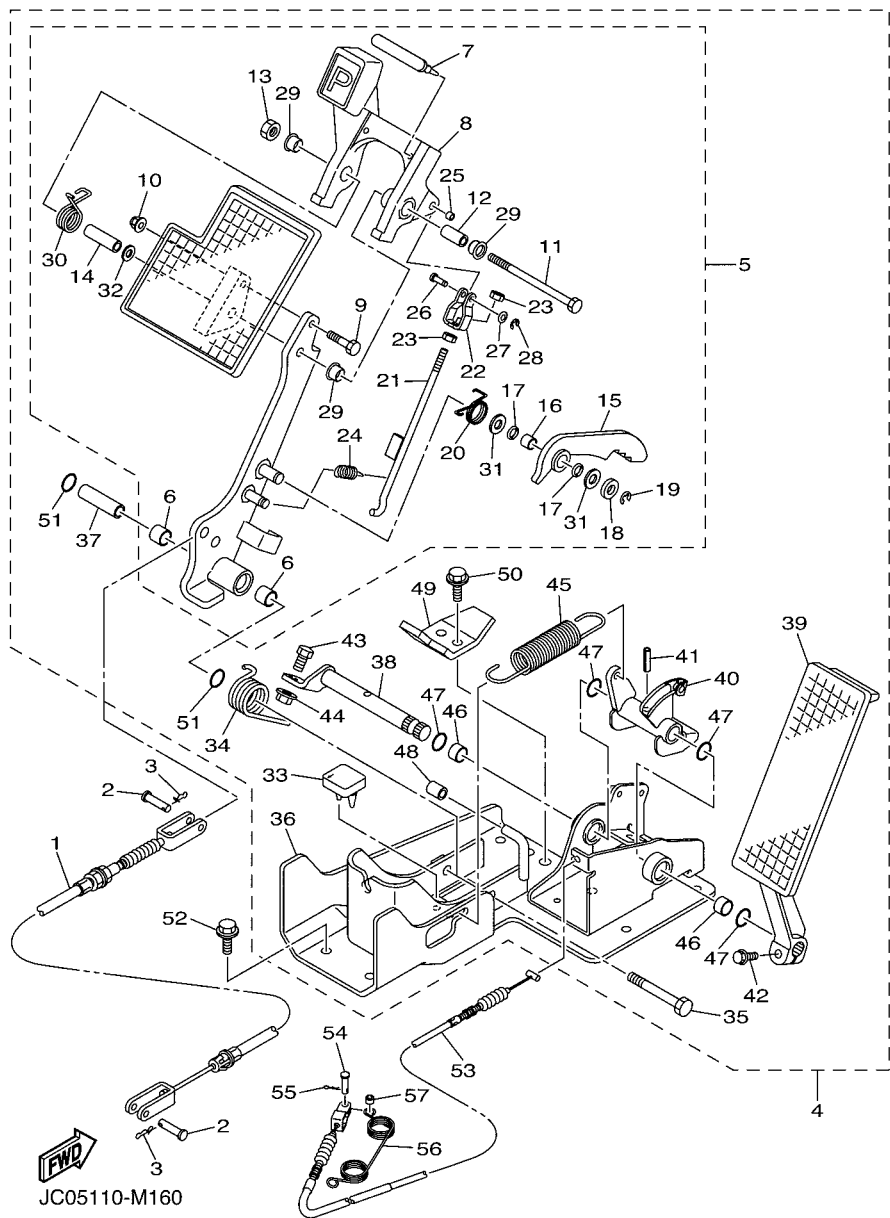
JC22110-N150

FIG. 16 PEDAL ASSEMBLY



REF. NO.	PART NO.	DESCRIPTION	JC22				REMARKS
1	JW1-F6341-31	WIRE, BRAKE 1	1				
2	91702-10028	PIN, CLEVIS	2				
3	90468-20196	CLIP	2				
4	JW8-F7850-21	PEDAL ASSY (L.H)	1				
5	JW9-F7200-21	.PEDAL, BRAKE	1				
6	JW8-F7814-20	.BUSH, PEDAL	2				
7	JW9-F5672-00	..PAD, PARKING PEDAL	1				
8	JW9-F5671-00	..PEDAL, PARKING BRAKE	1				
9	JW8-F7117-00	..BOLT, MAIN STAND	1				
10	JW8-F8363-00	..NUT	1				
11	JW8-F7416-00	..BOLT, FOOTREST	1				
12	JW8-F639N-00	..COLLAR	1				
13	JW8-F7218-00	..NUT	1				
14	JW8-F7113-00	..COLLAR, MAIN STAND	1				
15	JW9-F5666-00	..SECTOR, PARKING BRAKE	1				
16	JW8-F7121-00	..BUSH	1				
17	JW9-F7221-00	..SEAL, SHAFT	2				
18	JW8-F7322-00	..WASHER	1				
19	JW8-F3183-00	..CIRCLIP	1				
20	JW8-F7426-01	..SPRING, RETURN	1				
21	JW9-F7231-10	..ROD, BRAKE	1				
22	JW9-F7232-00	..END, ROD 2	1				
23	JW8-F7318-00	..NUT	2				
24	JW8-F6314-00	..SPRING	1				
25	JW8-F639L-00	..BUSH 1	1				
26	JW9-F7228-00	..PIN, JOINT	1				
27	JW8-F8323-00	..WASHER, LEG SHIELD	1				

FIG. 16 PEDAL ASSEMBLY



REF. NO.	PART NO.	DESCRIPTION	JC22				REMARKS
28	JW8-F5415-00	..CIRCLIP	1				
29	90386-12800	..BUSH	3				
30	JW8-F7825-01	..SPRING, RETURN	1				
31	JW8-F7119-00	..WASHER	2				
32	JW8-F8319-00	..WASHER	1				
33	JW9-F7245-10	.PAD, BRAKE PEDAL	1				
34	JW8-F7316-01	.SPRING, SIDE STAND	1				
35	JW8-F7217-00	.BOLT	1				
36	JW8-F7445-20	.PLATE 1	1				
37	JW8-F7213-20	.COLLAR	1				
38	JW8-F7853-10	.SHAFT, PEDAL 1	1				
39	JW9-F7871-10	.PEDAL, ACCELERATOR	1				
40	JW8-F7872-20	.ARM, ACCELERATOR PEDAL	1				
41	JW8-F7438-00	.PIN, CLEVIS	1				
42	JW8-F7434-00	.BOLT	1				
43	JW8-F7317-00	.BOLT	1				
44	JW8-F7118-00	.NUT	1				
45	JW8-F815H-01	.SPRING	1				
46	JW8-F7814-21	.BUSH, PEDAL	2				
47	JW8-F4486-00	.O-RING	4				
48	JW9-F5673-00	.DAMPER, BRAKE	1				
49	JW9-F7246-20	.NAIL, BRAKE	1				
50	JW8-F8331-00	.BOLT, LEG SHIELD	2				
51	JW8-F4486-00	.O-RING	2				
52	95812-08020	BOLT, FLANGE	6				
53	JW8-F6311-01	CABLE, THROTTLE 1	1				
54	91702-05014	PIN, CLEVIS	1				

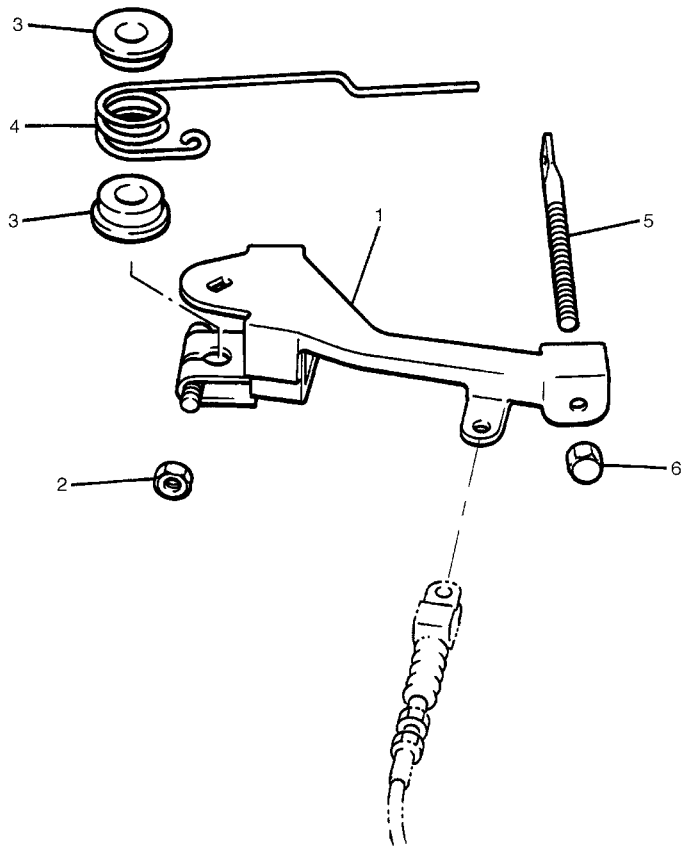


FIG. 17 GOVERNOR

REF. NO.	PART NO.	DESCRIPTION	JC22				REMARKS
1	J38-27951-00	LEVER, SPEED LIMITER	1				
2	95380-06600	NUT, HEXAGON	1				
3	90386-08141	BUSH	2				
4	90508-40678	SPRING, TORSION	1				
5	J38-27959-00	SCREW, ADJUSTING	1				
6	95602-06200	NUT, SELF-LOCKING	1				



JT71010-B190

FIG. 18 PRIMARY SHEAVE

REF. NO.	PART NO.	DESCRIPTION	JC22				REMARKS
1	JW8-G6201-22	PRIMARY CLUTCH ASSY	1				
2	JW8-G6210-00	.PRIMARY FIXED SHEAVE COMP.	1				
3	JW8-G6220-22	.PRIMARY SLIDING SHEAVE COMP.	1				
4	JW8-G624A-00	..OIL SEAL 1	2				
5	JW8-G6253-00	..SLIDER	3				
6	JW8-G4189-00	..SCREW	3				
7	JW8-F135J-00	..NIPPLE	1				
8	JW8-G6251-21	.SPIDER	1				
9	JW8-G6205-21	.WEIGHT LINK ASSY	3				
10	JW8-G5618-00	..WASHER, 1	2				
11	90113-04803	..BOLT, SET	1				
12	JW8-G6236-20	.PIN, WEIGHT	3				
13	JW8-G6237-20	.PIN, WEIGHT 2	3				
14	90113-04803	.BOLT, SET	6				
15	JW8-G5618-00	.WASHER, 1	6				
16	JW8-G5621-00	.WASHER, 2	6				
17	JW8-G6231-21	.CAP	1				
18	JW8-G5282-00	.SCREW	3				
19	JW8-G6249-00	BOLT	1				
20	JW8-G7339-00	PLUG	1				
21	J55-G6241-00	V-BELT	1				

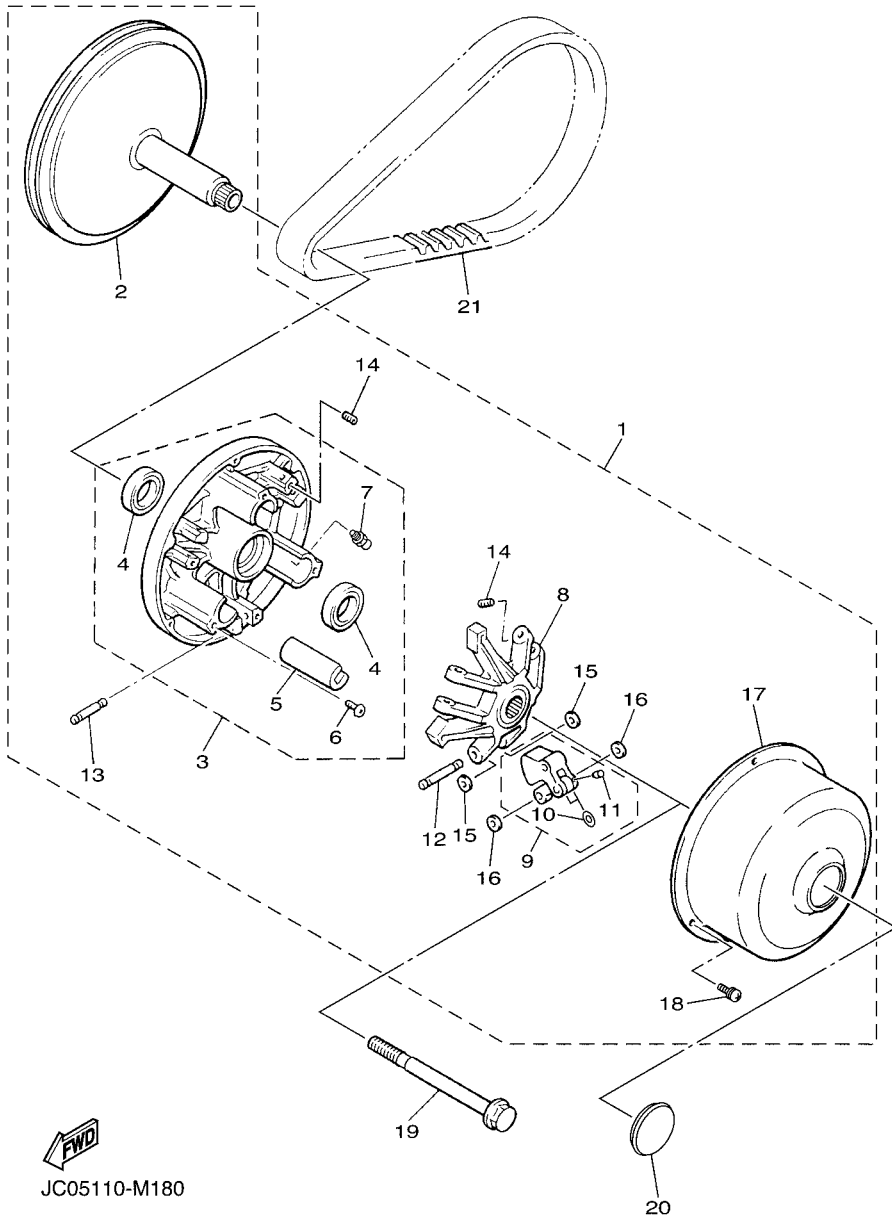
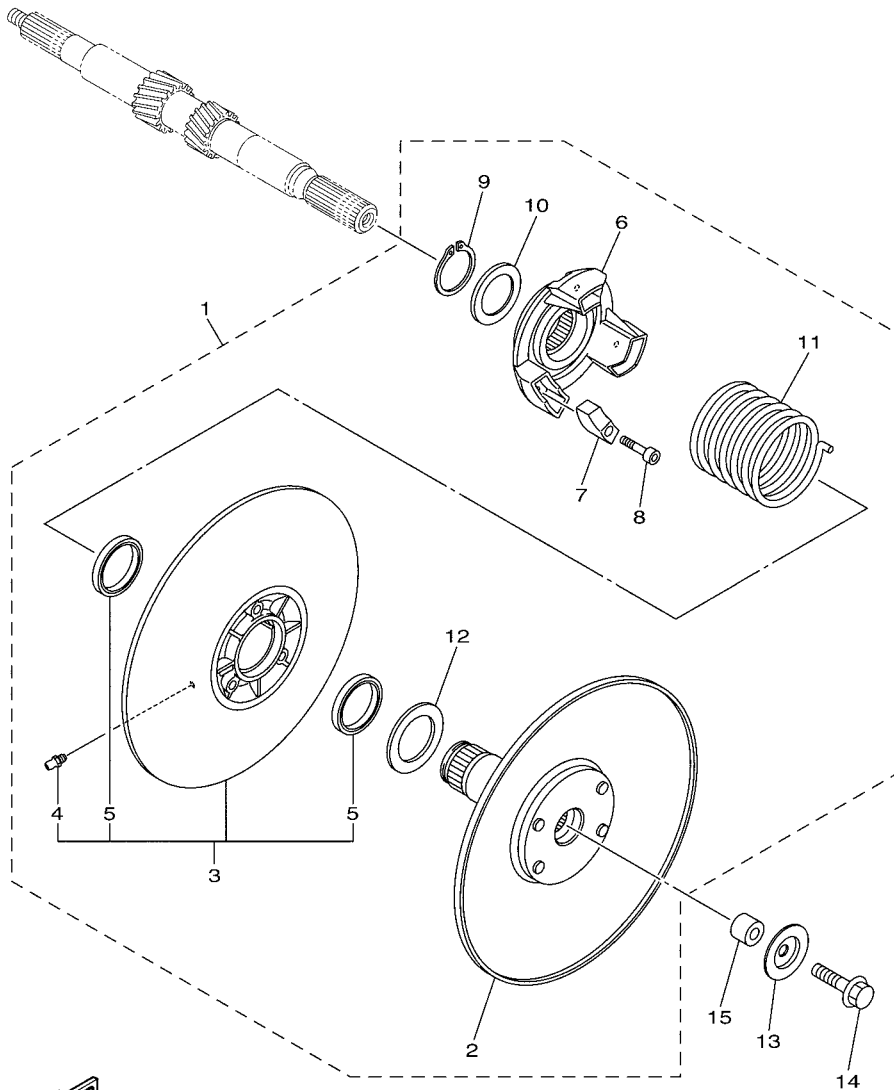


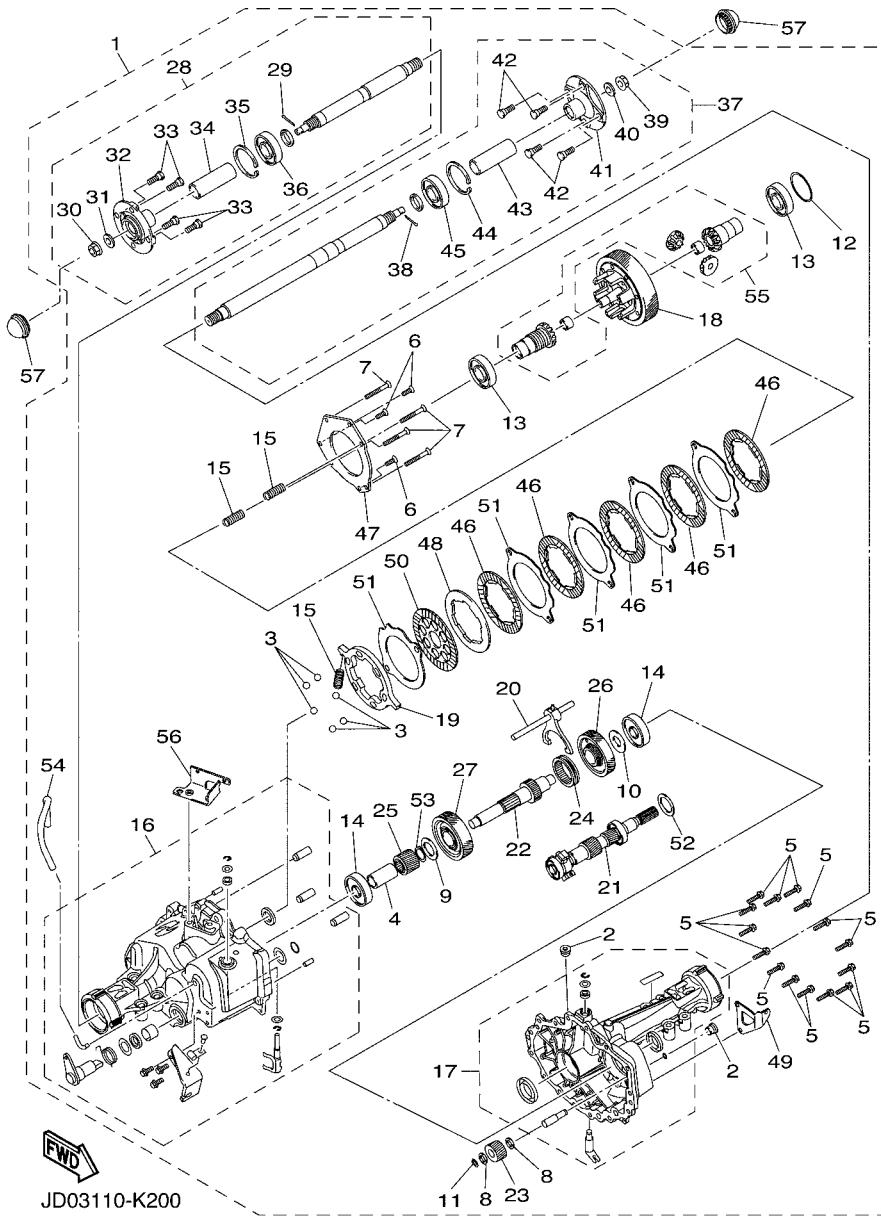
FIG. 19 SECONDARY SHEAVE

REF. NO.	PART NO.	DESCRIPTION	JC22				REMARKS
1	JW8-G6202-20	SECONDARY SHEAVE ASSY	1				
2	JW8-G6260-20	.SECONDARY FIXED SHEAVE COMP.	1				
3	JW8-G6270-20	.SECONDARY SLIDING SHEAVE COMP.	1				
4	JW8-F135J-00	..NIPPLE	1				
5	JW8-G624B-00	..OIL SEAL 2	2				
6	JW8-G6284-00	..SEAT, SECONDARY SPRING	1				
7	JW8-E7688-00	.SHOE, RAMP	3				
8	JW8-G6159-00	.BOLT 3	3				
9	JW8-G5531-00	.CLIP, DRIVE SHAFT	1				
10	JW8-G6374-00	.COLLAR, SPRING	1				
11	JW8-G6275-10	.SPRING, CLUTCH 1	1				
12	JW8-G5677-00	.WASHER	1				
13	90209-08018	WASHER	1				
14	90105-08002	BOLT, FLANGE	1				
15	JW8-G5697-20	COLLAR	1				



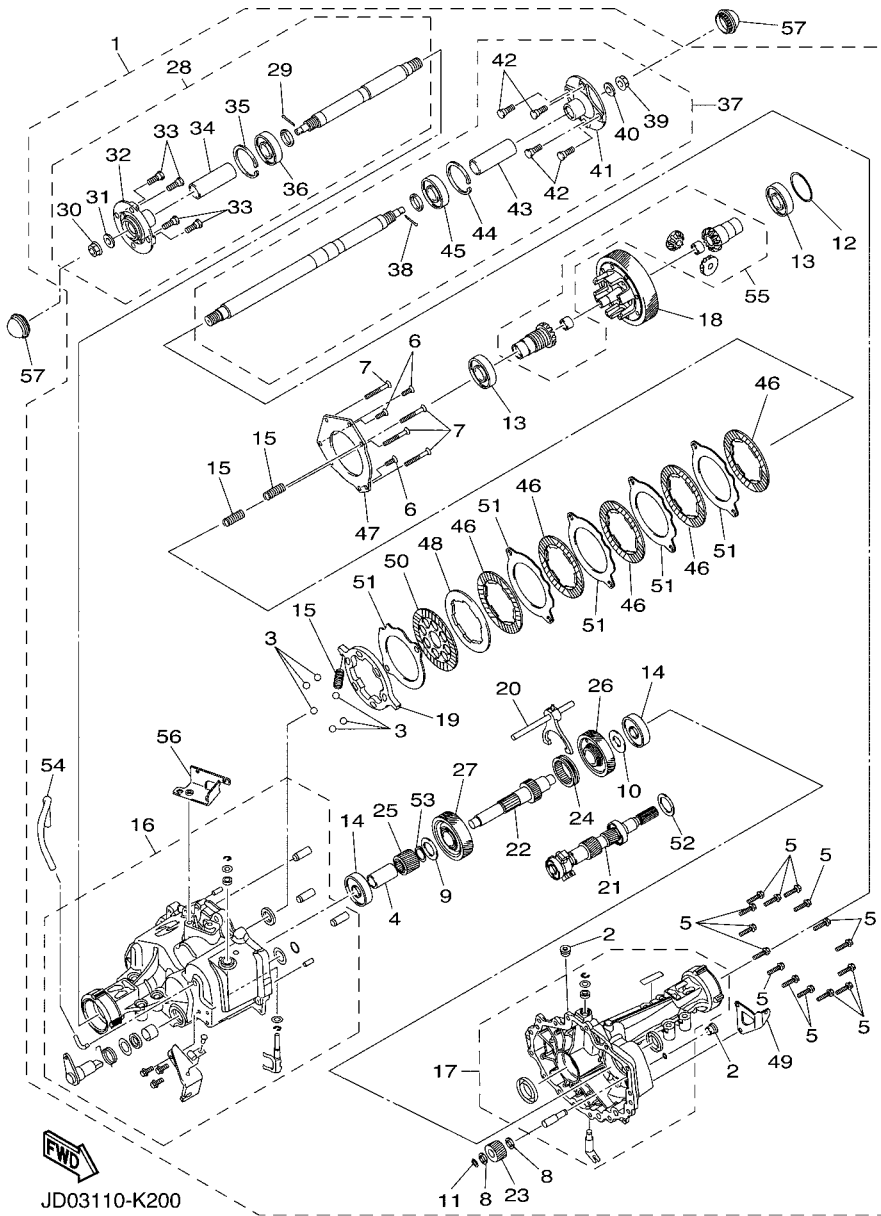
JC05110-M190

FIG. 20 TRANSAXLE & BRAKE



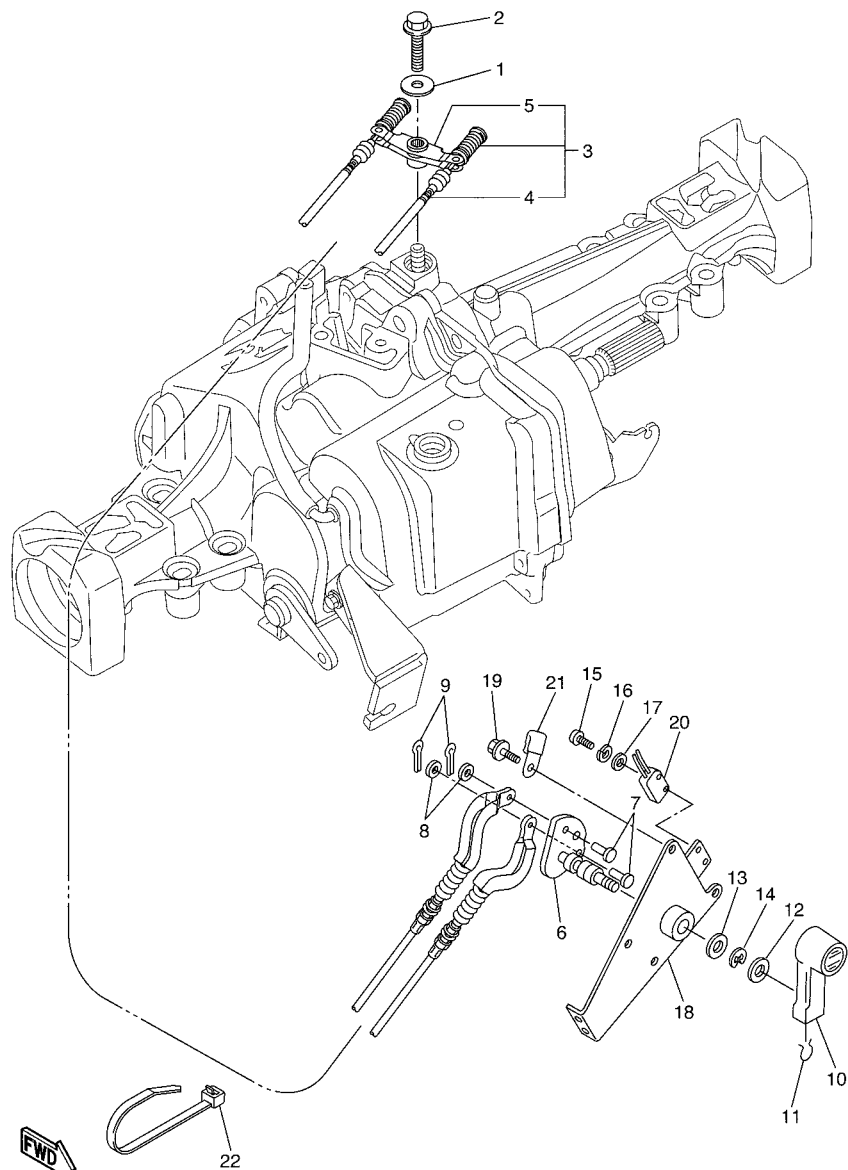
REF. NO.	PART NO.	DESCRIPTION	JC22				REMARKS
1	JW1-G6300-02	TRANS AXLE ASSY	1				
2	JW1-G6168-00	.PLUG, DRAIN 1	2				
3	JW1-F4684-00	.BALL	6				
4	JW1-G4132-00	.BUSHING	1				
5	JW1-G4582-00	.BOLT, 2	15				
6	JW1-G4189-00	.SCREW	3				
7	JW1-G6158-00	.BOLT 2	4				
8	JW1-G4188-00	.WASHER	2				
9	JW1-G5677-00	.WASHER	1				
10	JW1-G5618-00	.WASHER, 1	1				
11	JW1-G6443-00	.RING, HOLDOUT	1				
12	JW1-G6117-00	.SHIM, RING GEAR	1				UN
13	JW1-G6164-00	.BEARING 1	2				
14	JW1-G6165-00	.BEARING 2	2				
15	JW1-G4135-00	.SPRING	3				
16	JW1-G6540-02	.REAR AXLE HOUSING COMP.	1				
17	JW1-G6550-02	.REAR AXLE HOUSING COMP. 2	1				
18	JW1-G6110-00	.RING GEAR COMP.	1				
19	JW1-F384K-00	.BALL, SEAT	1				
20	JW1-G4120-00	.HANDLE GEAR SHIFT ASSY	1				
21	JW1-G6320-00	.INPUT SHAFT ASSY	1				
22	JW1-G6348-00	.SHAFT 2	1				
23	JW1-G6356-00	.GEAR, IDLER	1				
24	JW1-G6328-00	.GEAR, WHEEL 3	1				
25	JW1-G6131-00	.GEAR, RING 2	1				
26	JW1-G6361-00	.GEAR, COUNTER 1	1				
27	JW1-G6362-00	.GEAR, COUNTER 2	1				

FIG. 20 TRANSAXLE & BRAKE



JD03110-K200

REF. NO.	PART NO.	DESCRIPTION	JC22				REMARKS
28	JW1-G6510-01	..REAR AXLE SHAFT COMP.	1				
29	JW1-G633J-00	..PIN, COTTER	1				
30	JW1-G4583-10	..NUT	1				
31	JW1-G2376-00	..WASHER, SPECIAL	1				
32	JW1-G6542-10	..HUB	1				
33	JW1-G4178-00	..BOLT, STUD	4				
34	JW1-G6128-01	..SPACER, BEARING	1				
35	JW1-G4156-00	..RING, SNAP	1				
36	JW1-F2176-00	..BEARING	1				
37	JW1-G6520-01	..REAR AXLE SHAFT COMP. 2	1				
38	JW1-G633J-00	..PIN, COTTER	1				
39	JW1-G4583-10	..NUT	1				
40	JW1-G2376-00	..WASHER, SPECIAL	1				
41	JW1-G6542-10	..HUB	1				
42	JW1-G4178-00	..BOLT, STUD	4				
43	JW1-G6128-01	..SPACER, BEARING	1				
44	JW1-G4156-00	..RING, SNAP	1				
45	JW1-F2176-00	..BEARING	1				
46	JW1-G6336-00	..PLATE 1	5				
47	JW1-G6114-00	..PLATE, COVER	1				
48	JW1-G4526-00	..PLATE	1				
49	JW1-G6554-00	..BRACKET 1	1				
50	JW1-G6345-00	..DISC, FRICTION	1				
51	JW1-G633H-00	..PLATE 2	5				
52	JW1-G6344-00	..SHIM	1				UN
53	JW1-G6854-00	..RING	1				
54	JW1-G6894-00	..HOSE	1				



JW61100-H210

FIG. 21 SHIFTER & CABLES

REF. NO.	PART NO.	DESCRIPTION	JC22				REMARKS
1	90201-05800	WASHER, PLATE	1				
2	90105-05005	BOLT, FLANGE	1				
3	JW1-G8330-01	CABLE END ASSY	1				
4	JW1-G6371-01	.WIRE, SHIFT	2				
5	JW1-G6383-01	.LEVER, SHIFT 2	1				
6	JW8-G6382-00	LEVER, SHIFT 1	1				
7	91702-06014	PIN, CLEVIS	2				
8	92902-06600	WASHER, PLATE	2				
9	91402-20012	PIN, COTTER	2				
10	JN3-G6381-00	KNOB, SHIFT	1				
11	JN3-G6376-00	SPRING SET	1				
12	90201-208S8	WASHER, PLATE	1				
13	90201-198S7	WASHER, PLATE	1				
14	99009-19400	CIRCLIP	1				
15	98502-04016	SCREW, PAN HEAD	2				
16	92902-04100	WASHER, SPRING	2				
17	92902-04600	WASHER, PLATE	2				
18	JN3-G6372-00	BRACKET, SHIFT WIRE	1				
19	90105-06831	BOLT, FLANGE	3				
20	JN3-82617-01	SWITCH	1				
21	90465-06038	CLAMP	1				
22	90464-76800	CLAMP	1				

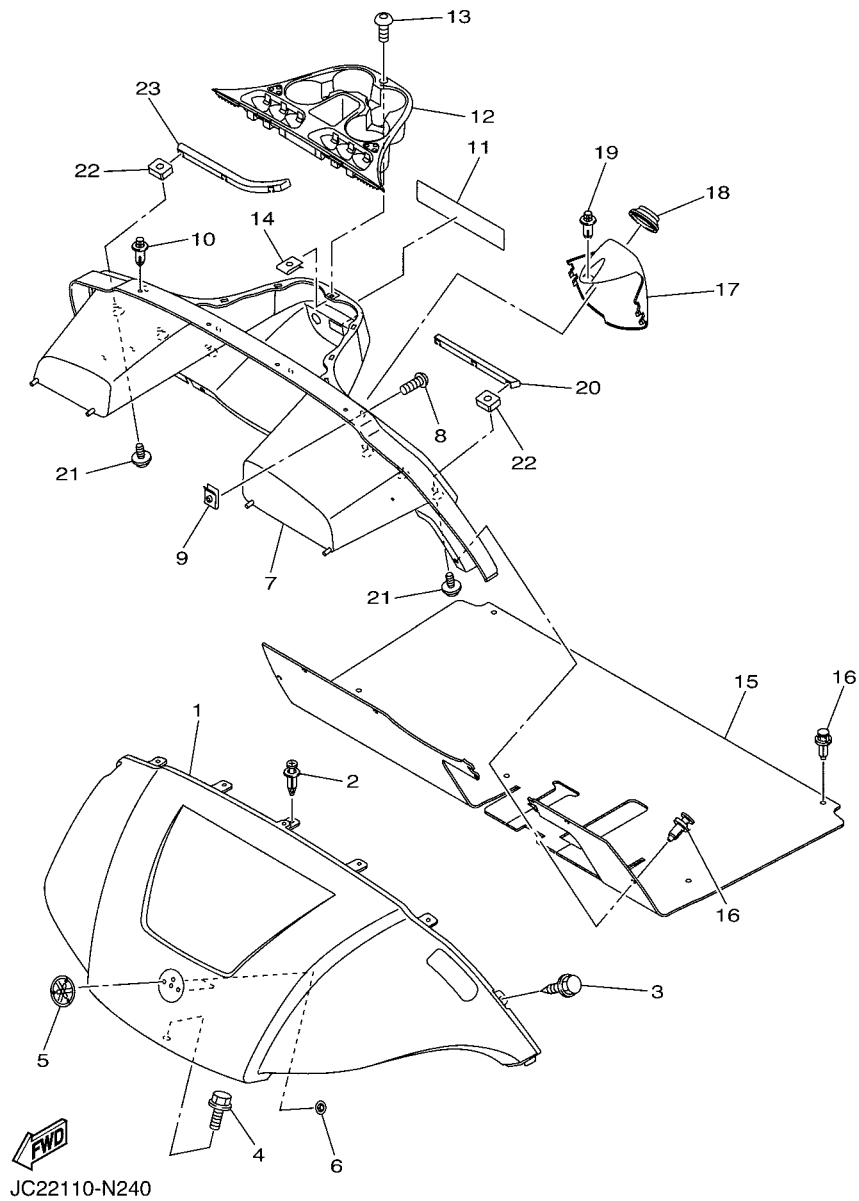
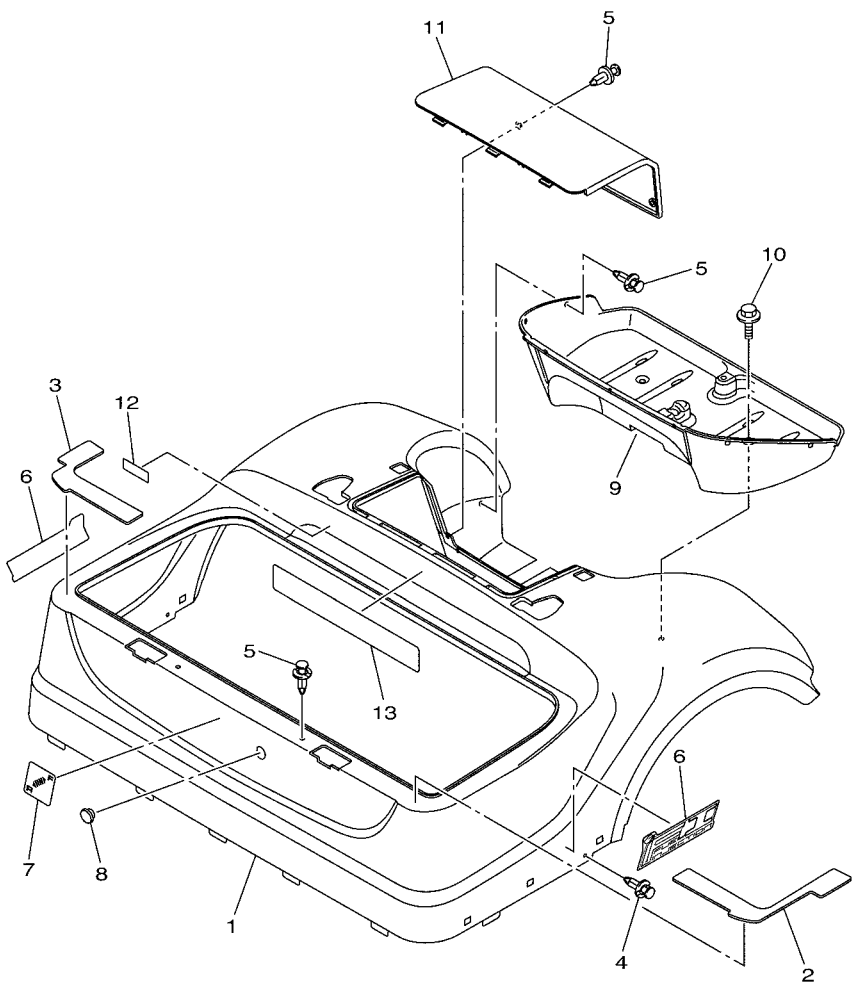


FIG. 24 BODY

REF. NO.	PART NO.	DESCRIPTION	JC22			REMARKS
1	JW1-K8115-01	COWL, FRONT	1			UR FOR WS7
	JW1-K8115-11	COWL, FRONT	1			UR FOR VDGS1
	JW1-K8115-21	COWL, FRONT	1			UR FOR HTR
	JW1-K8115-31	COWL, FRONT	1			UR FOR LNYM8
	JW1-K8115-90	COWL, FRONT	1			UR FOR LNMP
	JW1-K8115-51	COWL, FRONT	1			UR FOR BMG
	JW1-K8115-80	COWL, FRONT	1			UR FOR DPBST
2	90269-06800	RIVET	5			
3	JW1-F3396-01	SCREW, SPECIAL	2			
4	90105-06870	BOLT, FLANGE	1			
5	JW1-F4161-10	EMBLEM 1	1			
6	90183-06071	NUT, SPRING	2			
7	JW2-K8114-01	PANEL, FRONT	1			
8	90111-05805	BOLT,HEX. SOCKET BUTTON	4			
9	90183-05008	NUT, SPRING	4			
10	90269-07001	RIVET	5			
11	JW8-K7768-00	LABEL, WARNING	1			
12	JW8-K835E-00	HOLDER, BEVERAGE	1			
13	90111-05805	BOLT,HEX. SOCKET BUTTON	1			
14	90183-05008	NUT, SPRING	1			
15	JW1-K8233-30	MAT, MAIN FLOOR 3	1			
16	90269-09003	RIVET	10			
17	JW1-K8273-00	COVER, HOLE	1			
18	JW1-K8245-00	SEAL 1	1			
19	90269-06804	RIVET	1			
20	JW1-K8261-00	PLATE, BODY PROTECT 1	1			
21	90119-06244	BOLT, WITH WASHER	6			

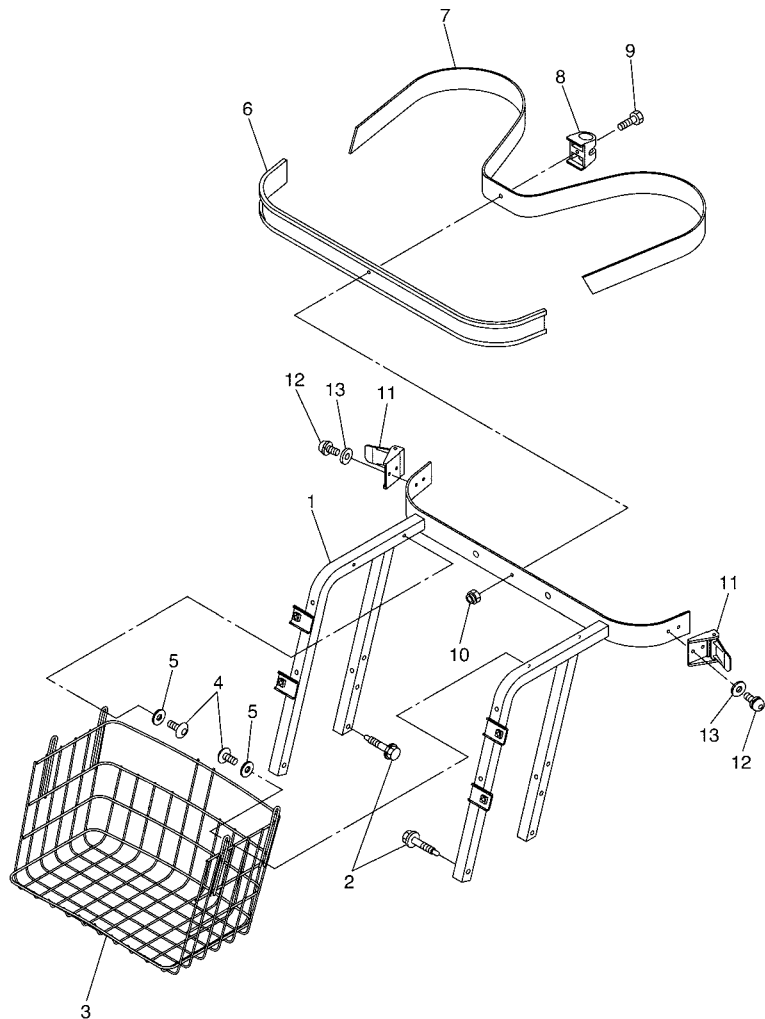
FIG. 25 BODY 2

REF. NO.	PART NO.	DESCRIPTION	JC22				REMARKS
1	JW1-K8142-00	PANEL, REAR BODY	1				UR FOR WS7
	JW1-K8142-10	PANEL, REAR BODY	1				UR FOR VDGS1
	JW1-K8142-20	PANEL, REAR BODY	1				UR FOR HTR
	JW1-K8142-30	PANEL, REAR BODY	1				UR FOR LNYM8
	JW1-K8142-90	PANEL, REAR BODY	1				UR FOR LNMP
	JW1-K8142-50	PANEL, REAR BODY	1				UR FOR BMG
	JW1-K8142-80	PANEL, REAR BODY	1				UR FOR DPBST
2	JW1-F2873-10	SEAL 1	1				
3	JW1-F2874-10	SEAL 2	1				
4	90269-06804	RIVET	2				
5	90269-08813	RIVET	11				
6	JC2-F1781-00	EMBLEM 1	2				
7	JW1-K7741-00	INDICATOR 1	1				
8	JR1-K8139-00	CAP, END	1				
9	JW1-K8237-10	COVER, REAR FLOOR	1				
10	JW1-K6179-01	BOLT, SPECIAL 1	2				
11	JW1-K8151-00	PANEL, INSPECTION LID 1	1				
12	JN6-H2377-00	LABEL	1				
13	JW1-K8297-01	PLATE, CAUTION 1 (E,F)	1				



JC21110-M270

FIG. 27 CARRIER

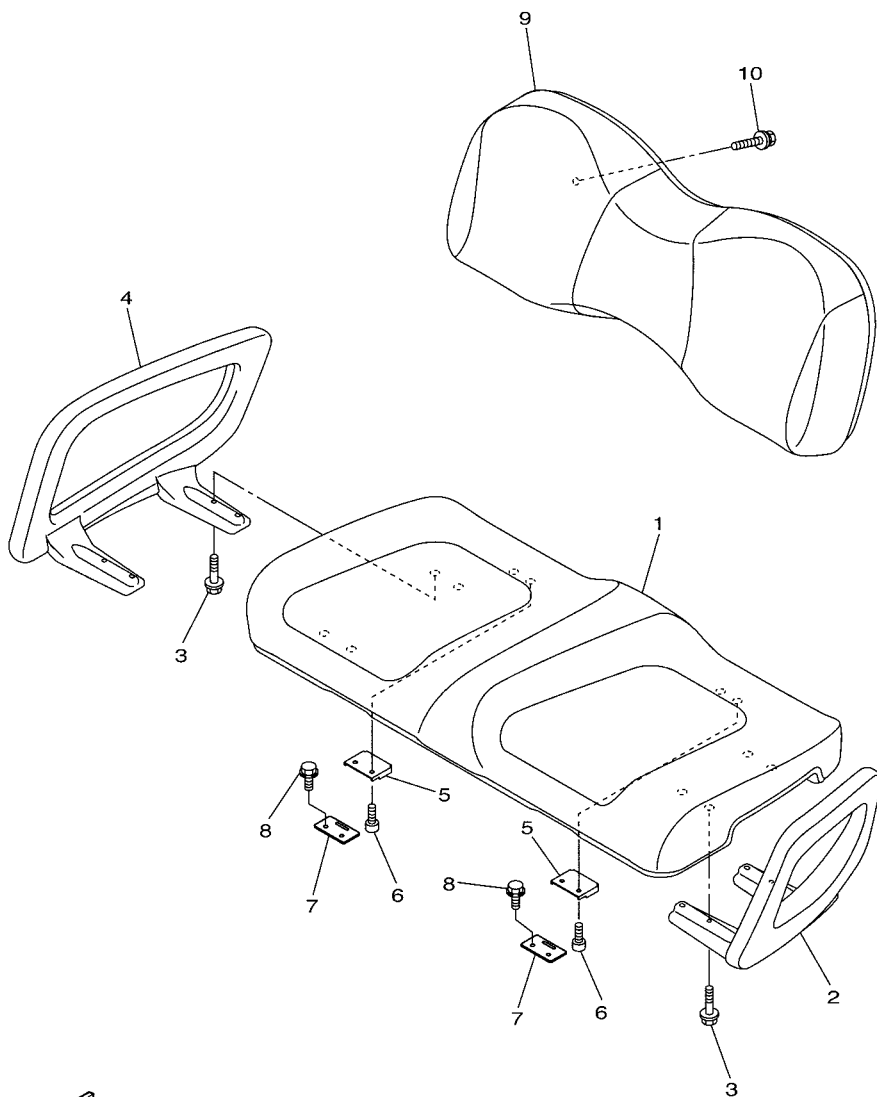


JW11100-E270

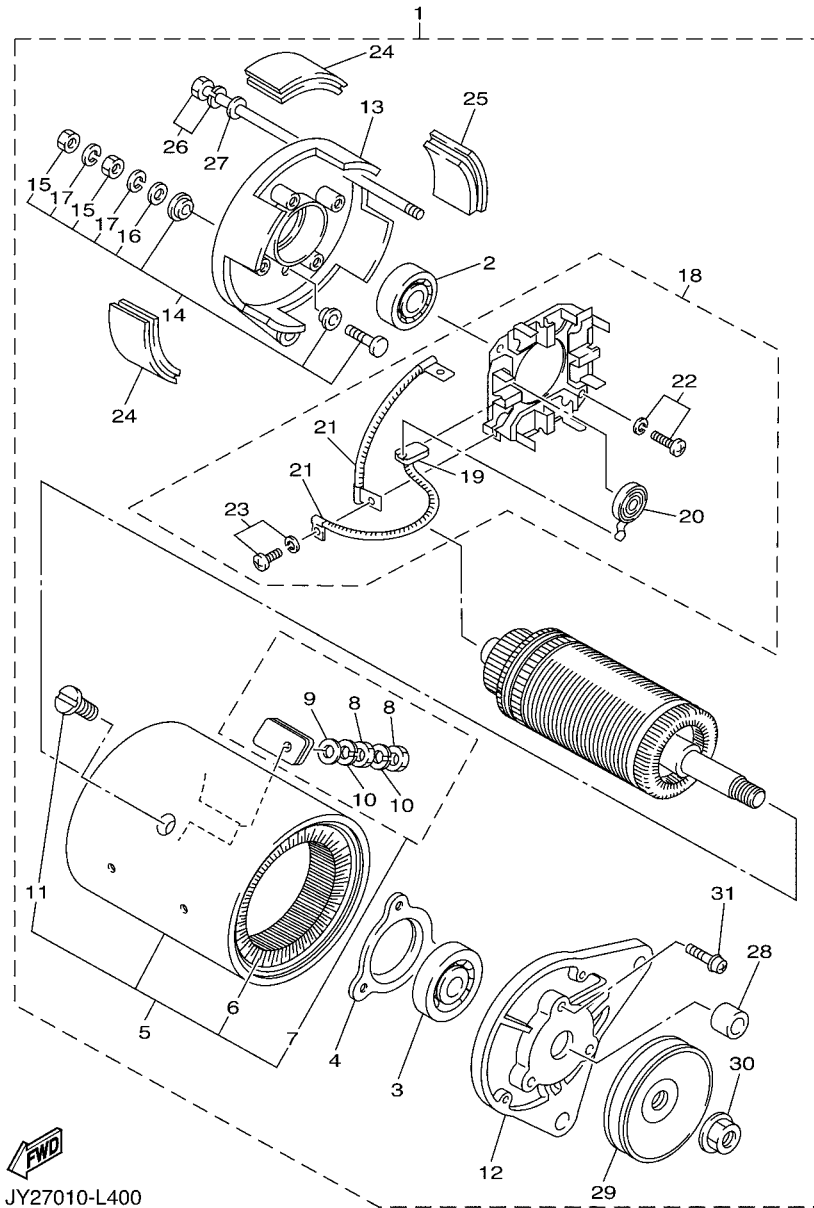
REF. NO.	PART NO.	DESCRIPTION	JC22				REMARKS
1	JW1-K8423-10	SUPPORT, SEAT BACK	1				
2	90109-08002	BOLT	4				
3	JW1-K8340-00	LUGGAGE RACK ASSY., REAR	1				
4	90110-06102	BOLT, HEXAGON SOCKET HEAD	4				
5	90201-068G7	WASHER, PLATE	4				
6	JF2-K8356-00	PAD, BAG SUPPORT	1				
7	JN6-K8355-20	BAND	1				
8	JW1-K834G-00	HOLDER, RAKE SAND	1				
9	9708R-06020	BOLT	1				
10	90185-06836	NUT, SELF-LOCKING	1				
11	JN6-K8380-00	LOCK ASSY	2				
12	90159-06845	SCREW, WITH WASHER	4				
13	9299R-06200	WASHER	4				

FIG. 28 SEAT

REF. NO.	PART NO.	DESCRIPTION	JC22				REMARKS
1	JW1-K8401-12	SEAT SUB-ASSY,CUSHION	1				
2	JW1-K8361-00	ARM REST 1	1				
3	90105-06129	BOLT, FLANGE	8				
4	JW1-K8362-00	ARM REST 2	1				
5	JW1-K8426-00	HINGE, SEAT 1	2				
6	90110-06125	BOLT, HEXAGON SOCKET HEAD	4				
7	JW1-K8427-00	HINGE, SEAT 2	2				
8	90163-06802	SCREW, TAPPING	4				
9	JW1-K8402-10	SEAT SUB ASSY, BACK	1				
10	90119-06808	BOLT, WITH WASHER	4				



JC21110-M300



JY27010-L400

FIG. 29 STARTING MOTOR

REF. NO.	PART NO.	DESCRIPTION	JC22				REMARKS
1	JN6-H1100-04	STARTER GENERATOR ASSY	1				
2	J10-H1157-10	.BEARING 1	1				
3	J10-H1158-10	.BEARING 2	1				
4	J10-81159-10	.HOLDER, BEARING	1				
5	JN6-H1110-10	.STATOR ASSY	1				
6	JN6-H1160-10	..FIELD COIL ASSY	1				
7	J10-81148-10	..SCREW SET 4	2				
8	9530N-06600	...NUT,HEX	2				
9	9290N-06600	...WASHER	1				
10	92907-06100	...WASHER, SPRING	2				
11	J10-81146-10	..SCREW 2	4				
12	JN6-H1165-00	.BRACKET, STARTER GENERATOR 1	1				
13	J10-H1166-10	.BRACKET, STARTER GENERATOR 2	1				
14	J10-81147-10	.SCREW SET 3	2				
15	9530N-06600	..NUT,HEX	2				
16	9290N-06600	..WASHER	1				
17	92907-06100	..WASHER, SPRING	2				
18	JN6-H1119-00	.BRUSH HOLDER ASSY	1				
19	JF2-H1111-00	..BRUSH	4				
20	JN6-H1113-00	..SPRING, BRUSH	4				
21	J10-81115-10	..WIRE, LEAD	2				
22	9850N-05016	..SCREW, PAN HEAD	2				
23	9850N-04010	..SCREW, PAN HEAD	4				
24	J10-81129-10	.COVER, BRUSH	3				
25	J10-81139-10	.COVER, BRUSH 2	1				
26	J10-H1145-10	.SCREW 1	2				
27	9290N-06600	.WASHER	2				

FIG. 30 ELECTRICAL 1

REF. NO.	PART NO.	DESCRIPTION	JC22				REMARKS
1	95812-12030	BOLT, FLANGE	2				
2	JW1-H1170-11	TENSIONER ASSY	1				
3	95822-08020	BOLT, FLANGE	2				
4	90109-08827	BOLT	1				
5	95702-08500	NUT, FLANGE	1				
6	90101-06053	BOLT	1				
7	95302-06600	NUT	1				
8	JC0-H1171-00	BRACKET, STARTER GENERATOR	1				
9	95822-08020	BOLT, FLANGE	2				
10	JW1-H1173-00	BELT	1				
11	JC0-85650-00	ROTOR ASSY	1				
12	JC0-81670-00	PICK-UP ASSY	1				
13	90480-20564	GROMMET	1				
14	95822-06016	BOLT, FLANGE	2				
15	1S4-82310-00	IGNITION COIL ASSY	1				
16	JC0-82316-00	BRACKET, IGNITION COIL	1				
17	95822-06016	BOLT, FLANGE	2				
18	95302-18600	NUT	1				
19	90201-18620	WASHER, PLATE	1				
20	90280-04052	KEY, WOODRUFF	1				
21	JN6-82370-00	PLUG CAP ASSY	1				
22	JE8-82372-00	SEAL, PLUG CAP	1				
23	JT0-85720-00	OIL LEVEL GAUGE ASSY	1				
24	95817-06012	BOLT, FLANGE	3				
25	JT0-85724-00	CLAMP	1				
26	JT0-15362-00	PLUG, OIL LEVEL	1				
27	93210-15566	O-RING	1				

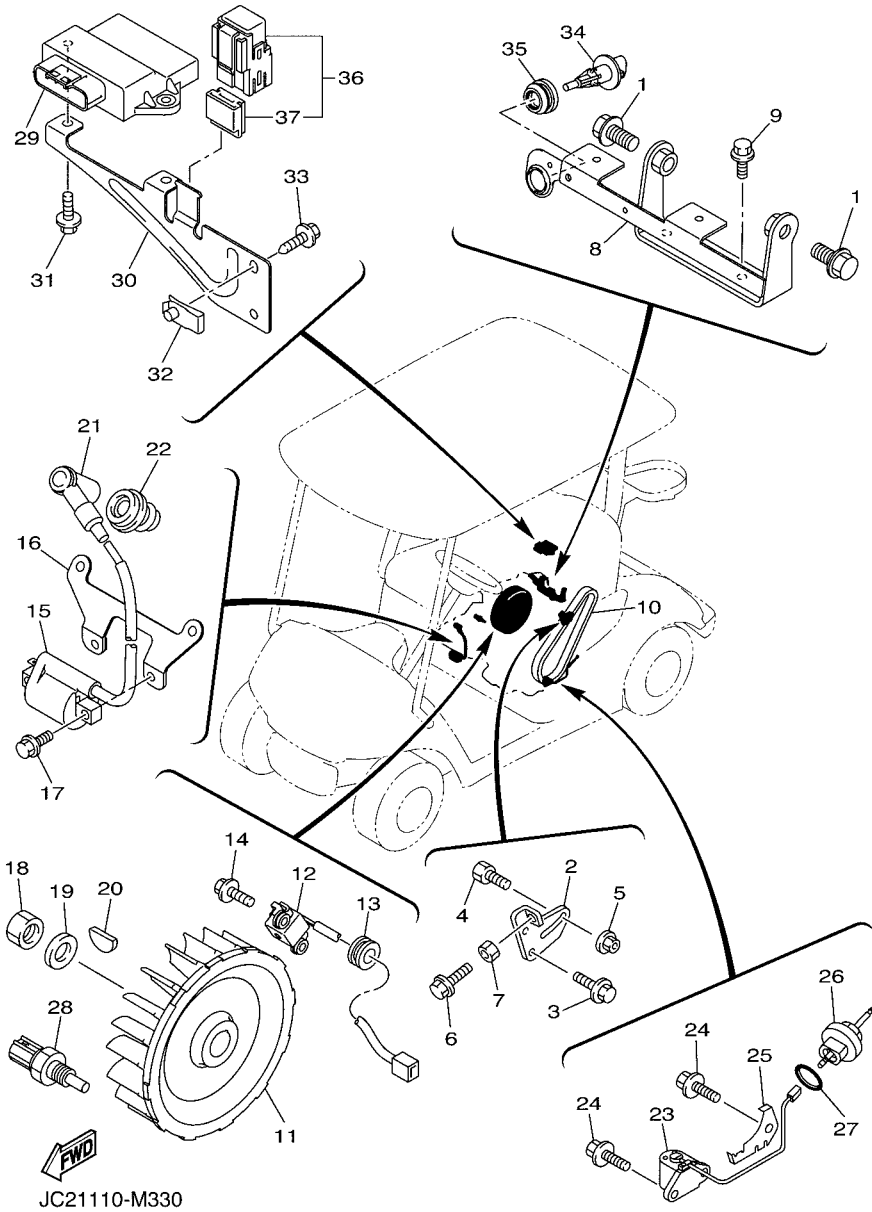


FIG. 31 ELECTRICAL 2

REF. NO.	PART NO.	DESCRIPTION	JC22				REMARKS
1	JW1-H2133-00	SCREW, FITTING	2				
2	J55-H2136-00	PLATE, BATTERY FITTING	1				
3	92902-06200	WASHER	2				
4	95702-06500	NUT, FLANGE	2				
5	JW1-H2115-01	WIRE, PLUS LEAD	1				
6	JW1-H2116-02	WIRE, MINUS LEAD	1				
7	JW1-H2117-00	WIRE, LEAD	1				
8	JC2-H2590-10	WIRE HARNESS ASSY	1				
9	JN6-H2151-00	.FUSE (10 A)	1				
10	JU7-H2151-00	.FUSE (20 A)	1				
11	JC0-82149-00	WIRE, LEAD 3	1				
12	JW1-H1950-00	RELAY ASSY	1				
13	90179-05807	.NUT	2				
14	90179-08824	.NUT	2				
15	90105-06831	BOLT, FLANGE	2				
16	JF2-81910-10	VOLTAGE REGULATOR ASSY	1				
17	90105-06870	BOLT, FLANGE	1				
18	JF7-82817-22	SWITCH	1				
19	98502-05025	SCREW, PAN HEAD	2				
20	92902-05600	WASHER, PLATE	2				
21	JR1-H3383-02	BUZZER	1				
22	JN6-H3386-01	STAY, BUZZER	1				
23	*	BATTERY ASSY (GC-24, 12V)	1				LM
24	90464-20237	CLAMP	5				
25	90461-14108	CLAMP	1				
26	90464-09823	CLAMP	1				
27	90464-20005	CLAMP	3				

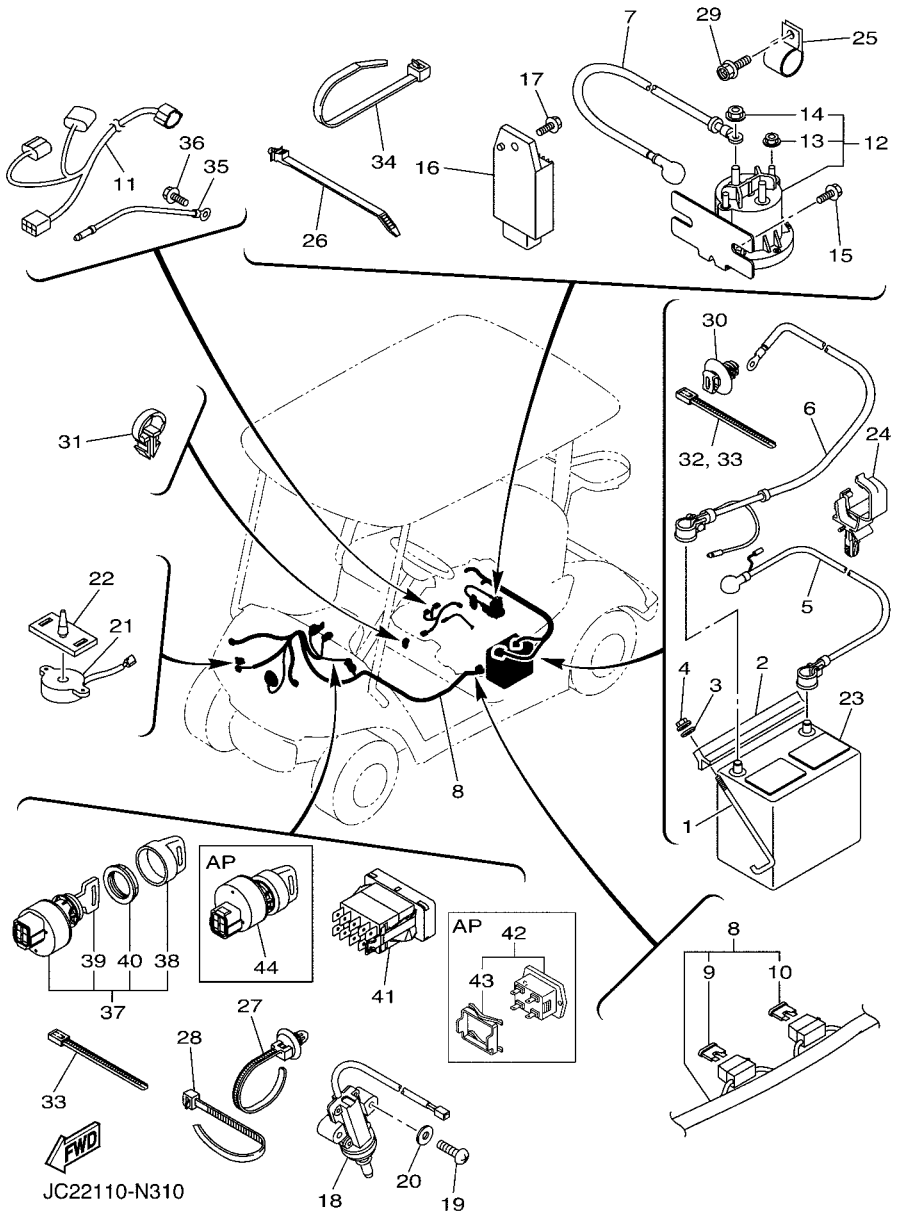


FIG. 31 ELECTRICAL 2

REF. NO.	PART NO.	DESCRIPTION	JC22				REMARKS
28	90464-48800	CLAMP	3				
29	90105-08867	BOLT, FLANGE	1				
30	5UG-F2465-10	HOLDER	2				
31	90464-19815	CLAMP	1				
32	90464-40825	CLAMP	1				
33	90464-40825	CLAMP	3				
34	90464-76800	CLAMP	2				
35	JC0-82519-00	WIRE, EARTH LEAD	1				
36	95822-06012	BOLT, FLANGE	1				
37	JW1-H2510-00	MAIN SWITCH ASSY	1				STD
38	5UG-H2579-00	.CAP, KEY	1				
39	JU2-H2511-00	.KEY, MAIN SWITCH	2				
40	JU6-H2569-00	.NUT, MAIN SWITCH	1				
41	JW8-H3530-00	PILOT LIGHT ASSY	1				STD
42	JN6-H351C-10	GAUGE 1	1				AP
43	JW1-H1128-00	.CLAMP	1				
44	JU2-H2510-20	MAIN SWITCH ASSY	1				AP RANDOMKEY

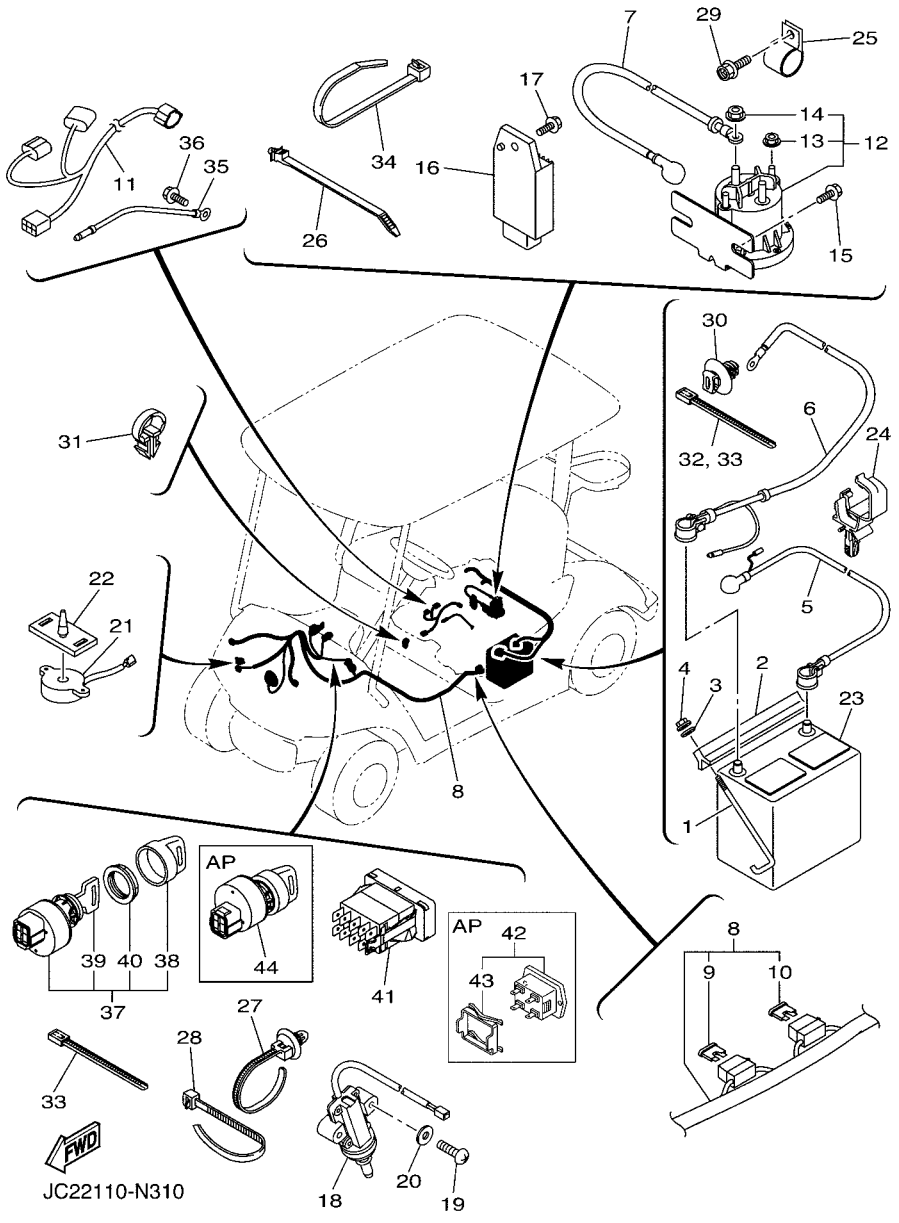
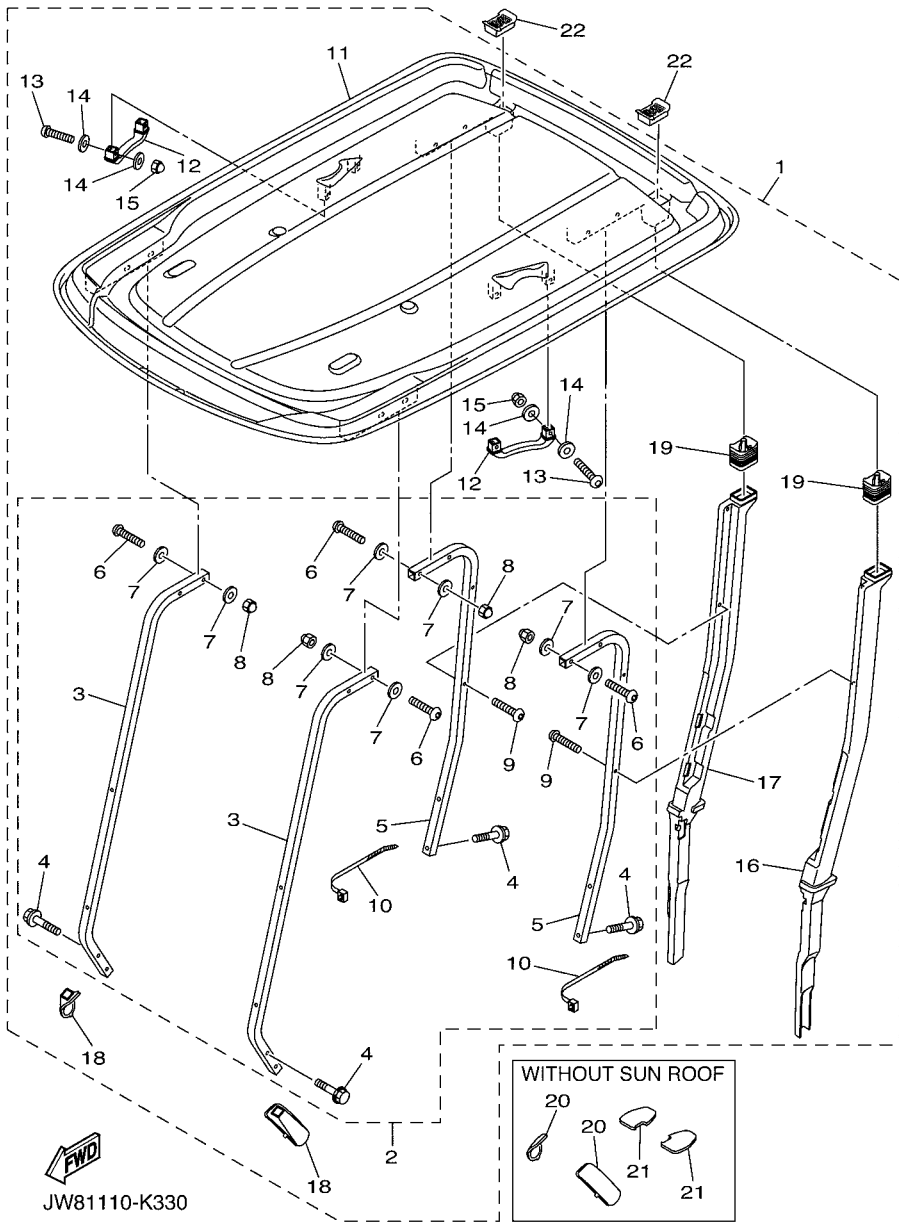


FIG. 32 ALTERNATE FOR SUN ROOF



REF. NO.	PART NO.	DESCRIPTION	JC22			REMARKS
1	JW1-K84A0-01	SUN TOP KIT	1			AP
2	JW1-K84A2-01	.HARDWARE KIT, SUN TOP	1			
3	JW1-K8312-00	..SUPPORT, SUN ROOF 1	2			
4	JW1-K8388-00	..BOLT, ROOF 1	8			
5	JW1-K8313-01	..SUPPORT, SUN ROOF 2	2			
6	JU0-K8388-00	..BOLT, ROOF 1	8			
7	JW1-F1549-01	..WASHER, FENDER MOLD	16			
8	JU0-K8398-00	..NUT, ROOF 1	8			
9	JW1-K7387-00	..SCREW	4			
10	90464-76800	..CLAMP	2			
11	JW1-K8314-10	.COVER, SUN ROOF	1			
12	JW1-K8214-00	.GRIP, HAND	2			
13	JU0-K8388-00	.BOLT, ROOF 1	4			
14	JW1-F1549-01	.WASHER, FENDER MOLD	8			
15	JU0-K8398-00	.NUT, ROOF 1	4			
16	JW1-F413G-00	.TUBE, DRAIN	1			
17	JW1-F413J-00	.TUBE, DRAIN 2	1			
18	JW1-K832F-10	.GROMMET, ROOF SUPPORT 1	2			
19	JW1-F414G-10	.SEAL	2			
20	JW1-K832H-00	GROMMET, ROOF SUPPORT 3	2			AP
21	JW1-K833H-00	GROMMET, ROOF SUPPORT 4	2			AP
22	JW1-K8482-00	CAP, END	2			AP

NUMERICAL INDEX

PART NO.	REF. NO.	PART NO.	REF. NO.	PART NO.	REF. NO.	PART NO.	REF. NO.	PART NO.	REF. NO.	PART NO.	REF. NO.
JT0-11111-00	2 - 1	JC0-15111-00	9 - 1	JU0-E4411-00	6 - 10	JW1-F3811-02	14 - 1	JW8-F6314-00	16 - 24	JW1-G4156-00	20 - 44
JN6-11116-00	2 - 10	J38-15361-00	9 - 18	JU0-E4412-00	6 - 11	JW1-F3812-00	14 - 13	JW1-F6341-31	16 - 1	JW1-G4178-00	20 - 33
JN6-11133-10	2 - 2	JT0-15362-00	30 - 26	5UH-E4424-00	6 - 17	JW1-F3822-01	14 - 29	JW8-F639L-00	16 - 25		20 - 42
JR7-11163-10	2 - 19	796-15363-01	9 - 16	JU0-E4450-00	6 - 12	JU0-F3828-10	14 - 4	JW8-F639N-00	16 - 12	JW1-G4188-00	20 - 8
JN6-11168-00	2 - 11	JN6-15411-01	9 - 8	JU0-E445E-00	6 - 13	1P0-F3833-00	14 - 26	JW8-F7113-00	16 - 14	JW1-G4189-00	20 - 6
JN6-11169-00	2 - 12	JY2-15451-00	9 - 12	JW1-E4710-20	8 - 1	JW1-F3837-00	14 - 22	JW8-F7117-00	16 - 9	JW8-G4189-00	18 - 6
JT0-11181-00	2 - 3	JC0-19001-40	1 - 1	JW1-E4713-00	8 - 4	JN3-F3838-00	14 - 6	JW8-F7118-00	16 - 44	JW1-G4526-00	20 - 48
JN6-11191-01	2 - 9	JT0-21481-00	10 - 3	JW8-E7688-00	19 - 7	5UG-F3844-00	14 - 19	JW8-F7119-00	16 - 31	JW1-G4582-00	20 - 5
JN6-11193-00	2 - 13	401-22128-01	13 - 16	JW8-F1153-00	12 - 5	JW1-F384K-00	20 - 19	JW8-F7121-00	16 - 16	JW1-G4583-10	20 - 30
812-11198-00	9 - 6	2NL-23448-00	13 - 9	JW8-F135J-00	18 - 7	JU0-F3857-11	14 - 3	JW9-F7200-21	16 - 5		20 - 39
JN6-11400-00	3 - 1	2NL-23517-00	13 - 11		19 - 4	JW8-F7213-20	14 - 5	JW8-F7213-20	16 - 37	JW8-G5282-00	18 - 18
JN6-11454-10	3 - 8	2HR-23526-00	13 - 3	JU0-F1436-00	8 - 2	JW1-F3866-00	14 - 24	JW8-F7217-00	16 - 35	JW8-G5531-00	19 - 9
JR7-11610-00	3 - 3	JW8-23841-00	14 - 27	JW1-F1549-01	32 - 7	JW1-F387A-00	14 - 11	JW8-F7218-00	16 - 13	JW1-G5618-00	20 - 10
JR7-11610-10	3 - 3	4WM-24180-00	15 - 14		32 - 14	JW1-F387E-00	14 - 14	JW9-F7221-00	16 - 17	JW8-G5618-00	18 - 10
JR7-11610-20	3 - 3	1S3-24486-00	15 - 9	JW1-F1738-00	12 - 6	5UG-F387F-00	14 - 17	JW9-F7228-00	16 - 26		18 - 15
JR7-11631-00-A0	3 - 2	18P-24491-00	15 - 8		12 - 8	5UG-F387G-00	14 - 15	JW9-F7231-10	16 - 21	JW8-G5621-00	18 - 16
583-11633-00	3 - 4	J38-27951-00	17 - 1		15 - 5	5UG-F387J-00	14 - 18	JW9-F7232-00	16 - 22	JW1-G5677-00	20 - 9
JR7-11635-00	3 - 2	J38-27959-00	17 - 5		15 - 20	5UG-F387K-00	14 - 16	JW9-F7245-10	16 - 33	JW8-G5677-00	19 - 12
JR7-11636-00	3 - 2	J10-81115-10	29 - 21	JC2-F1781-00	25 - 6	JW1-F3894-00	14 - 25	JW9-F7246-20	16 - 49	JW8-G5697-20	19 - 15
JN6-11650-10	3 - 6	J10-81129-10	29 - 24	JW1-F2110-12	11 - 1	JC0-F4111-01	15 - 1	JW8-F7316-01	16 - 34	JW1-G6110-00	20 - 18
JN6-11654-10	3 - 7	J10-81139-10	29 - 25	JN6-F2123-10	11 - 2	JW1-F4112-00	15 - 3	JW8-F7317-00	16 - 43	JW1-G6114-00	20 - 47
JN6-12111-10	4 - 2	J10-81146-10	29 - 11	JN6-F2124-10	11 - 6	JW1-F413G-00	32 - 16	JW8-F7318-00	16 - 23	JW1-G6117-00	20 - 12
J38-12117-01	4 - 6	J10-81147-10	29 - 14	JW1-F2176-00	20 - 36	JW1-F413J-00	32 - 17	JW8-F7322-00	16 - 18	JW1-G6128-01	20 - 34
J38-12118-00	4 - 7	J10-81148-10	29 - 7		20 - 45	JW1-F414G-10	32 - 19	JW1-F7411-20	12 - 7		20 - 43
4G0-12119-00	4 - 13	J10-81159-10	29 - 4	JW1-F217G-10	11 - 10	JW1-F4161-10	24 - 5	JW8-F7416-00	16 - 11	JW1-G6131-00	20 - 25
7RH-12121-10	4 - 3	JC0-81670-00	30 - 12	JW1-F2210-10	11 - 12	7CC-F4170-00	15 - 13	JW8-F7426-01	16 - 20	JW1-G6158-00	20 - 7
JN6-12151-10	4 - 8	JF2-81910-10	31 - 16	JW1-F2277-00	11 - 11	JW1-F419A-10	15 - 19	JW8-F7434-00	16 - 42	JW8-G6159-00	19 - 8
JN6-12153-10	4 - 4	5EA-81950-20	30 - 36	5UG-F2465-10	31 - 30	JW7-F4314-10	15 - 16	JW8-F7438-00	16 - 41	JW1-G6164-00	20 - 13
JR7-12154-10	4 - 12	5EA-81952-00	30 - 37	JW8-F2501-01	12 - 1	JW1-F4316-00	15 - 17	JW8-F7445-20	16 - 36	JW1-G6165-00	20 - 14
J38-12156-20	4 - 11	JC0-82149-00	31 - 11	JC0-F253B-00	30 - 30	JW1-F4317-00	15 - 18	JW8-F7814-20	16 - 6	JW1-G6168-00	20 - 2
22F-12159-10	4 - 9	1S4-82310-00	30 - 15	JW8-F253B-00	12 - 4	JU5-F4375-00	15 - 4	JW8-F7814-21	16 - 46	JW8-G6201-22	18 - 1
JR7-12170-00	4 - 1	JC0-82316-00	30 - 16	JW1-F258G-02	12 - 9	JW8-F4425-00	12 - 2	JW8-F7825-01	16 - 30	JW8-G6202-20	19 - 1
JN6-12616-00	5 - 3	JN6-82370-00	30 - 21	JW1-F2873-10	25 - 2	JW8-F4486-00	16 - 47	JW8-F7850-21	16 - 4	JW8-G6205-21	18 - 9
JN6-12621-02	5 - 1	JE8-82372-00	30 - 22	JW1-F2874-10	25 - 3		16 - 51	JW8-F7853-10	16 - 38	JW8-G6210-00	18 - 2
JN6-12651-01	5 - 5	1C7-82380-00	7 - 2	JW7-F312H-00	15 - 12	JW1-F4610-00	15 - 2	JW9-F7871-10	16 - 39	JW8-G6220-22	18 - 3
JN6-12652-00	5 - 7	JC0-82519-00	31 - 35	JW1-F3183-00	14 - 12	JW8-F4619-01	12 - 3	JW8-F7872-20	16 - 40	JW8-G6231-21	18 - 17
JR7-12658-00	5 - 6	JN3-82617-01	21 - 20	JW8-F3183-00	16 - 19	JW1-F467K-00	14 - 23	JW8-F815H-01	16 - 45	JW8-G6236-20	18 - 12
JC0-13567-00	6 - 4	JF7-82817-22	31 - 18	JW1-F3350-10	13 - 14	JW1-F4684-00	20 - 3	JW8-F8319-00	16 - 32	JW8-G6237-20	18 - 13
JN6-13567-00	6 - 3	4P9-83591-00	30 - 28	JW1-F3390-10	13 - 19	JW1-F5100-01	22 - 1	JW8-F8323-00	16 - 27	J55-G6241-00	18 - 21
	6 - 5	JC0-85650-00	30 - 11	JW1-F3396-01	24 - 3	JN6-F5118-01	13 - 29	JW8-F8331-00	16 - 50	JW8-G6249-00	18 - 19
JC0-13595-00	6 - 1	JT0-85720-00	30 - 23		26 - 3		20 - 57	JW8-F8363-00	16 - 10	JW8-G624A-00	18 - 4
JC0-13750-00	7 - 1	JT0-85724-00	30 - 25	JW1-F3400-00	14 - 10	JW8-F5415-00	16 - 28	JW1-G1661-00	20 - 56	JW8-G624B-00	19 - 5
JC0-13770-00	7 - 4	5CA-85886-00	30 - 34	5UG-F3489-00	14 - 20	JW9-F5666-00	16 - 15	JW1-G2376-00	20 - 31	JW8-G6251-21	18 - 8
JC0-13907-00	15 - 7	JC0-8591A-02	30 - 29	JU0-F3511-10	13 - 4	JW9-F5671-00	16 - 8		20 - 40	JW8-G6253-00	18 - 5
JC0-13971-00	15 - 11	JW1-E1116-00	2 - 17	JW1-F3512-00	13 - 5	JW9-F5672-00	16 - 7	JW1-G4120-00	20 - 20	JW8-G6260-20	19 - 2
5CA-14147-00	7 - 5	JW1-E1166-00	2 - 16	JU0-F3521-10	13 - 12	JW9-F5673-00	16 - 48	JW1-G4132-00	20 - 4	JW8-G6270-20	19 - 3
5CA-14435-00	30 - 35	JW1-E2691-00	5 - 9	5UG-F3527-00	14 - 21	JW8-F6311-01	16 - 53	JW1-G4135-00	20 - 15	JW8-G6275-10	19 - 11
7KY-14613-01	8 - 3	JU0-E3505-09	6 - 14	JU0-F3570-20	13 - 1	JC0-F6312-01	6 - 18	JW1-G4156-00	20 - 35	JW8-G6284-00	19 - 6

NUMERICAL INDEX

PART NO.	REF. NO.	PART NO.	REF. NO.	PART NO.	REF. NO.	PART NO.	REF. NO.	PART NO.	REF. NO.	PART NO.	REF. NO.
JW1-G6300-02	20 - 1	JW1-H1173-00	30 - 10	JW1-K818B-00	26 - 5	90105-06862	6 - 16	90201-128S4	11 - 9	91402-20012	21 - 9
JW1-G6320-00	20 - 21	JN3-H1661-00	29 - 28	JW1-K8191-00	26 - 6	90105-06870	24 - 4	90201-18620	30 - 19	91702-05010	6 - 7
JW1-G6328-00	20 - 24	JW1-H1950-00	31 - 12	JW1-K8192-00	26 - 7		31 - 17	90201-198S7	21 - 13	91702-05014	16 - 54
JW1-G6336-00	20 - 46	JW1-H2115-01	31 - 5	JW1-K8214-00	32 - 12	90105-08002	19 - 14	90201-208S8	21 - 12	91702-06014	21 - 7
JW1-G633H-00	20 - 51	JW1-H2116-02	31 - 6	JW1-K8233-30	24 - 15	90105-08867	12 - 11	90208-14801	13 - 27	91702-10028	16 - 2
JW1-G633J-00	20 - 29	JW1-H2117-00	31 - 7	JW1-K8237-10	25 - 9		31 - 29	90209-08018	19 - 13	92902-04100	21 - 16
	20 - 38	JW1-H2133-00	31 - 1	JW1-K8245-00	24 - 18	90105-088B0	23 - 3	90269-06800	24 - 2	92902-04600	21 - 17
JW1-G6344-00	20 - 52	J55-H2136-00	31 - 2	JW1-K8261-00	24 - 20	90105-10219	13 - 8	90269-06804	24 - 19	92902-05600	31 - 20
JW1-G6345-00	20 - 50	JN6-H2151-00	31 - 9	JW1-K8262-00	24 - 23	90105-10267	13 - 13		25 - 4	92902-06200	31 - 3
JW1-G6348-00	20 - 22	JU7-H2151-00	31 - 10	JW1-K8270-00	26 - 1		13 - 20		26 - 4	92902-06600	21 - 8
JW1-G6356-00	20 - 23	JN6-H2377-00	25 - 12	JW1-K8273-00	24 - 17	90105-10373	13 - 6	90269-07001	24 - 10	92902-08100	8 - 8
JW1-G6361-00	20 - 26	JW1-H2510-00	31 - 37	JW1-K8297-01	25 - 13	90105-10847	14 - 28	90269-08813	5 - 10	92902-08600	8 - 9
JW1-G6362-00	20 - 27	JU2-H2510-20	31 - 44	JW1-K8312-00	32 - 3	90105-13800	11 - 3		25 - 5		14 - 31
JW1-G6371-01	21 - 4	JU2-H2511-00	31 - 39	JW1-K8313-01	32 - 5	90109-08002	27 - 2	90269-09003	24 - 16	92902-10200	10 - 2
JN3-G6372-00	21 - 18	JU6-H2569-00	31 - 40	JW1-K8314-10	32 - 11	90109-08827	30 - 4	90280-04052	30 - 20	92902-12200	14 - 8
JW8-G6374-00	19 - 10	5UG-H2579-00	31 - 38	JW1-K832F-10	32 - 18	90110-06102	27 - 4	90340-12097	9 - 5	92907-06100	29 - 10
JN3-G6376-00	21 - 11	JC2-H2590-10	31 - 8	JW1-K832H-00	32 - 20	90110-06125	28 - 6	90381-17067	13 - 10		29 - 17
JN3-G6381-00	21 - 10	JR1-H3383-02	31 - 21	JW1-K833H-00	32 - 21	90111-05805	24 - 8	90381-18001	13 - 2	9290N-06600	29 - 9
JW8-G6382-00	21 - 6	JN6-H3386-01	31 - 22	JW1-K8340-00	27 - 3		24 - 13	90386-08141	17 - 3		29 - 16
JW1-G6383-01	21 - 5	JN6-H351C-10	31 - 42	JW1-K834G-00	27 - 8	90113-04803	18 - 11	90386-12800	16 - 29		29 - 27
JW1-G6410-20	20 - 55	JW8-H3530-00	31 - 41	JN6-K8355-20	27 - 7		18 - 14	90387-046N7	14 - 37	9299R-06200	27 - 13
JW1-G6443-00	20 - 11	JW1-K6179-01	25 - 10	JF2-K8356-00	27 - 6	90114-12806	13 - 22	90387-12016	13 - 15	93102-30083	13 - 26
JW1-G6510-01	20 - 28		30 - 33	JW8-K8357-00	14 - 32	90119-06156	30 - 31	90387-241M7	13 - 25	93102-35014	9 - 3
JW1-G6520-01	20 - 37	JW1-K7387-00	32 - 9	JN6-K8358-01	14 - 33	90119-06244	24 - 21	90461-14108	31 - 25		9 - 10
JW1-G6540-02	20 - 16	JW1-K7510-01	23 - 1	JW8-K835E-00	24 - 12	90119-06808	28 - 10	90462-05061	2 - 15	93210-15566	30 - 27
JW1-G6542-10	20 - 32	JW8-K7540-00	23 - 5	JW1-K8361-00	28 - 2	90119-06884	6 - 6	90464-09823	31 - 26	93210-22344	9 - 17
	20 - 41	JW1-K7741-00	25 - 7	JW1-K8362-00	28 - 4	90119-10044	11 - 5	90464-19815	31 - 31	93210-398D6	6 - 15
JW1-G6550-02	20 - 17	JW8-K7762-00	14 - 38	JN6-K8380-00	27 - 11	90159-06845	27 - 12	90464-20005	31 - 27	93306-005Y3	13 - 24
JW1-G6554-00	20 - 49	JW8-K7768-00	24 - 11	JU0-K8388-00	32 - 6	90163-06802	28 - 8	90464-20237	31 - 24	93306-20201	9 - 4
JW1-G6854-00	20 - 53	JW2-K8114-01	24 - 7		32 - 13	90170-05302	4 - 10	90464-40825	15 - 15		9 - 11
JW1-G6894-00	20 - 54	JW1-K8115-01	24 - 1	JW1-K8388-00	32 - 4	90173-06010	24 - 22		31 - 32	93306-204X0	13 - 23
JW8-G7339-00	18 - 20	JW1-K8115-11	24 - 1	JU0-K8398-00	32 - 8	90179-05807	31 - 13		31 - 33	93306-20714	9 - 9
JW1-G8330-01	21 - 3	JW1-K8115-21	24 - 1		32 - 15	90179-08824	31 - 14	90464-48800	31 - 28	93306-30709	9 - 2
JN6-H1100-04	29 - 1	JW1-K8115-31	24 - 1	JW1-K8401-12	28 - 1	90179-12262	22 - 2	90464-76800	21 - 22	93450-21053	3 - 5
JN6-H1110-10	29 - 5	JW1-K8115-51	24 - 1	JW1-K8402-10	28 - 9	90179-13800	11 - 4		31 - 34	94702-00343	2 - 8
JF2-H1111-00	29 - 19	JW1-K8115-80	24 - 1	JW1-K8423-10	27 - 1	90179-16889	29 - 30		32 - 10	94702-00348	2 - 8
JN6-H1113-00	29 - 20	JW1-K8115-90	24 - 1	JW1-K8426-00	28 - 5	90183-05008	24 - 9	90465-06038	21 - 21	95302-06600	30 - 7
JN6-H1119-00	29 - 18	JR1-K8139-00	25 - 8	JW1-K8427-00	28 - 7		24 - 14	90467-13847	2 - 20	95302-06800	15 - 10
JW1-H1128-00	31 - 43	JW1-K8142-00	25 - 1	JW1-K8482-00	32 - 22	90183-06071	24 - 6	90468-10049	6 - 8	95302-18600	30 - 18
J10-H1145-10	29 - 26	JW1-K8142-10	25 - 1	JW1-K84A0-01	32 - 1	90183-06811	30 - 32	90468-10050	16 - 55	9530N-06600	29 - 8
J10-H1157-10	29 - 2	JW1-K8142-20	25 - 1	JW1-K84A2-01	32 - 2	90185-06836	27 - 10	90468-20196	16 - 3		29 - 15
J10-H1158-10	29 - 3	JW1-K8142-30	25 - 1	JG5-WF511-10	13 - 21	90185-12008	14 - 7	90480-20564	30 - 13	95380-06600	17 - 2
JN6-H1160-10	29 - 6	JW1-K8142-50	25 - 1	90101-06053	30 - 6	90201-04810	14 - 35	90501-264A9	4 - 5	95602-06200	17 - 6
JN6-H1161-00	29 - 29	JW1-K8142-80	25 - 1	90105-05005	21 - 2	90201-05800	21 - 1	90502-10013	14 - 36	95602-08200	8 - 5
JN6-H1165-00	29 - 12	JW1-K8142-90	25 - 1	90105-06129	28 - 3	90201-068G7	27 - 5	90508-16460	16 - 56	95602-08710	2 - 18
J10-H1166-10	29 - 13	JW1-K8151-00	25 - 11	90105-06831	12 - 10	90508-40678	8 - 6	90508-16460	17 - 4	95602-10200	10 - 1
JW1-H1170-11	30 - 2	JW1-K8164-00	23 - 2		21 - 19	90201-10057	2 - 5	90560-05001	16 - 57		11 - 14
JC0-H1171-00	30 - 8	JW1-K818A-00	26 - 2		31 - 15		9 - 15	90560-08251	15 - 6		13 - 7

NUMERICAL INDEX

PART NO.	REF. NO.	PART NO.	REF. NO.	PART NO.	REF. NO.	PART NO.	REF. NO.	PART NO.	REF. NO.
95602-10200	23 - 6								
95602-12200	11 - 8								
	14 - 9								
95602-14100	13 - 28								
95612-12100	13 - 18								
95622-08618	2 - 7								
95702-06500	31 - 4								
95702-08500	6 - 2								
	30 - 5								
95802-06020	5 - 2								
	5 - 8								
95812-06025	7 - 6								
95812-08020	14 - 2								
	16 - 52								
95812-08045	9 - 13								
95812-10055	11 - 13								
95812-12030	30 - 1								
95812-12065	11 - 7								
95812-12080	13 - 17								
95817-06012	30 - 24								
95822-06012	23 - 4								
	31 - 36								
95822-06016	30 - 14								
	30 - 17								
95822-06030	2 - 14								
95822-08020	30 - 3								
	30 - 9								
97002-08025	8 - 7								
97012-08030	14 - 30								
97012-10050	9 - 14								
97012-10070	2 - 4								
9708R-06020	27 - 9								
97702-40525	14 - 34								
97702-60420	5 - 4								
98502-04016	21 - 15								
98502-05025	31 - 19								
98502-06014	7 - 3								
9850N-04010	29 - 23								
9850N-05016	29 - 22								
9850N-05018	29 - 31								
99001-07600	6 - 9								
99009-19400	21 - 14								
99530-08016	9 - 7								
99530-14016	2 - 6								