



PARTS CATALOGUE

G23-A (JU51) U.S.A



1CJU5-110E1

()

2010/05/17

NEWS No.	DATE	COMMENT
PE0-GC-100002	2010/05/14	COR: FIG.17 BRAKE2, FIG.18 BRAKE3 LIST/ILLUSTRATION CORRECTION

G23-A
PARTS CATALOGUE
©2004 by Yamaha Motor Co., Ltd.
1st edition, February 2004
All rights reserved.
Any reprinting or unauthorized use
without the written permission of
Yamaha Motor Co., Ltd.
is expressly prohibited.
Printed in Japan.

FOREWORD

This Parts Catalogue is related to the parts for the model(s) on the cover page. When you are ordering replacement parts, please refer to this Parts Catalogue and quote both part numbers and part names correctly.

1. Modifications or additions which have been made after the issue of the Parts Catalogue will be announced in the Parts News.

It is advisable that you make the necessary corrections to the Parts Catalogue according to the Parts News.

2. Abbreviations

The following abbreviations are used in this Parts Catalogue.

“UR” Use specified parts number.

“UN” Use as many as needed.

“AP” Alternate Parts

“LM” Locally Made (Parts need to be ordered locally)

“F#” Frame No. (Applicable machine No.)

“O/S” Over Size

3. The number of components for assembly

- Parts, which are to be supplied in an assembly, are listed with a dot (.) in front of the part name as shown below.
- The numeral appearing to the right of each component part indicates the quantity of parts for each assembly unit.

PART NO.	DESCRIPTION	Q'TY	REMARKS
2F5-83310-60	FRONT FLASHER LIGHT ASSY	2	
115-83311-60	.BULB (6V-18W)	1	

4. Applicable colours of graphics are represented in the “REMARKS” as shown below.

PART NO.	DESCRIPTION	Q'TY	REMARKS
2N4-24110-00-X5	FUEL TANK COMP.	2	MXR
3J1-24240-10	.GRAPHIC, FUEL TANK	1	FOR MXR

5. Note that the illustrations for reference in finding parts numbers are not to be used for assembling. When assembling, please use the applicable service manual.

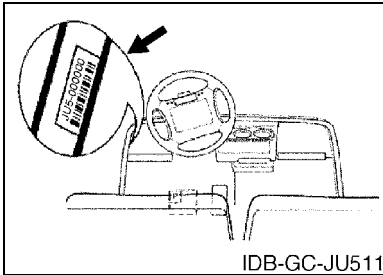
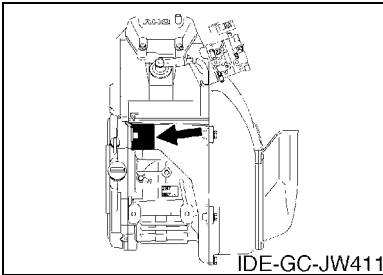
6. The asterisk (*) before a reference number indicates modified items after the first edition.

FOREWORD

7. Applicable Serial No.

Engine Serial No.

Frame Serial No.



10. Applicable Starting Serial No.

Frame Serial No.

Serial No.	Name Of Q'ty Column	Model Code
JU5-*****	JU51	JU51

8. Applicable Colour Code (The (*) mark shows Model colour.)

Abbreviation	Colour Name	Colour Code

9. Quantity Column Information

Column No.	Name Of Q'ty Column	Destination
1	JU51	U.S.A

CONTENTS

ENGINE

ENGINE ASSEMBLY	1
CYLINDER HEAD	2
CRANKSHAFT & PISTON	3
CAMSHAFT & VALVE	4
AIR SHROUD & FAN	5
INTAKE	6
CARBURETOR	7
EXHAUST	8
CRANKCASE	9

BODY

ENGINE BRACKET	10
REAR ARM & SUSPENSION	11
FRAME	12
FRONT SUSPENSION & WHEEL	13
STEERING	15
FUEL TANK	17
BRAKE	18
BRAKE 2	21
BRAKE 3	22
ACCELERATOR	23
GOVERNOR	24

DRIVE

PRIMARY SHEAVE	25
SECONDARY SHEAVE	26
TRANSMISSION 1	27
REAR AXLE MOUNT & WHEEL	30
SHIFTER & CABLES	31
BUMPER	32
BODY	33
BODY 2	35
BODY FITTING	36
CARRIER	37
SEAT	39

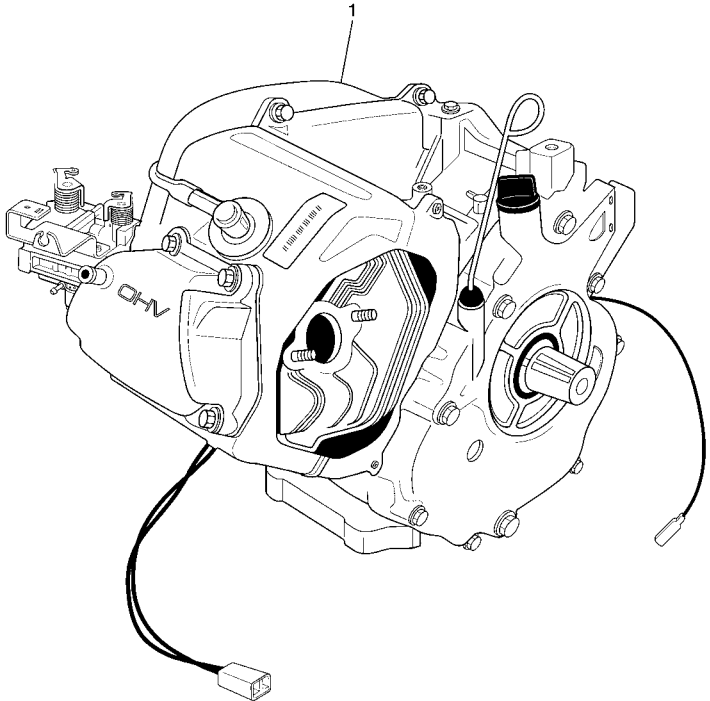
ELECTRICAL

STARTING MOTOR	40
HEADLIGHT	42
ELECTRICAL 1	43
ELECTRICAL 2	44

INDEX

NUMERICAL INDEX	46
-----------------------	----

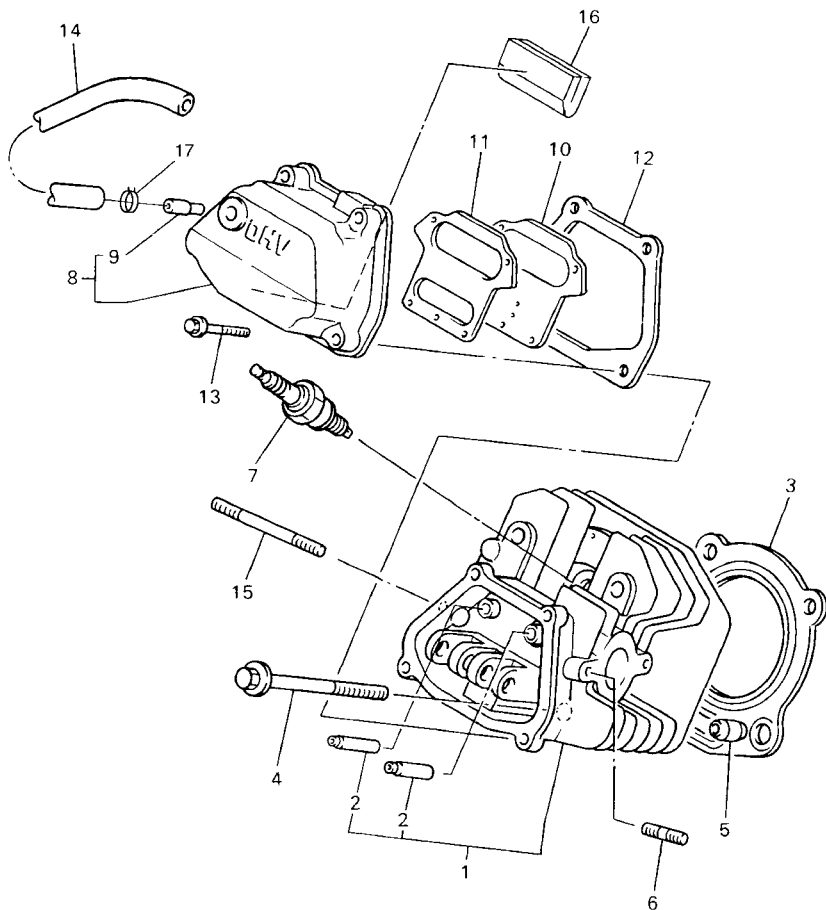
FIG. 1 ENGINE ASSEMBLY



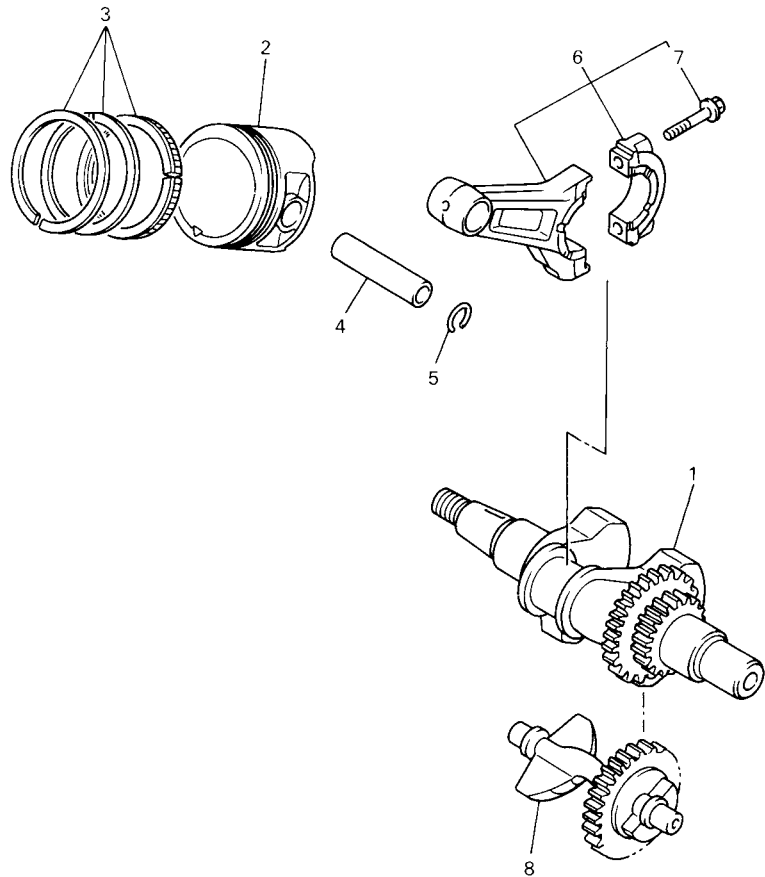
REF. NO.	PART NO.	DESCRIPTION	JU61				REMARKS
1	JR6-19001-00	ENGINE ASSEMBLY	1				

FIG. 2 CYLINDER HEAD

REF. NO.	PART NO.	DESCRIPTION	JU51				REMARKS
1	JT0-11111-00	HEAD, CYLINDER 1	1				
2	JN6-11133-10	.GUIDE, VALVE 1	2				
3	JT0-11181-00	GASKET, CYLINDER HEAD 1	1				
4	95817-10070	BOLT, FLANGE	4				
5	99530-14016	PIN, DOWEL	2				
6	95627-08618	BOLT, STUD	2				
7	94702-00348	PLUG, SPARK (NGK-BPR2ES)	1				STD
	94702-00343	PLUG, SPARK (NGK BP4ES)	1				AP
8	JN6-11191-01	COVER, CYLINDER HEAD 1	1				
9	JN6-11116-00	.JOINT, BREATHER	1				
10	JN6-11168-00	COVER, BREATHER	1				
11	JN6-11169-00	GASKET, BREATHER COVER	1				
12	JN6-11193-00	GASKET, HEAD COVER 1	1				
13	95827-06030	BOLT, FLANGE	4				
14	JN6-E1166-00	PIPE, BREATHER 1	1				
15	95607-08710	BOLT, STUD	2				
16	JR7-11163-00	ELEMENT	1				
17	90467-13847	CLIP	2				



JT01010-0011

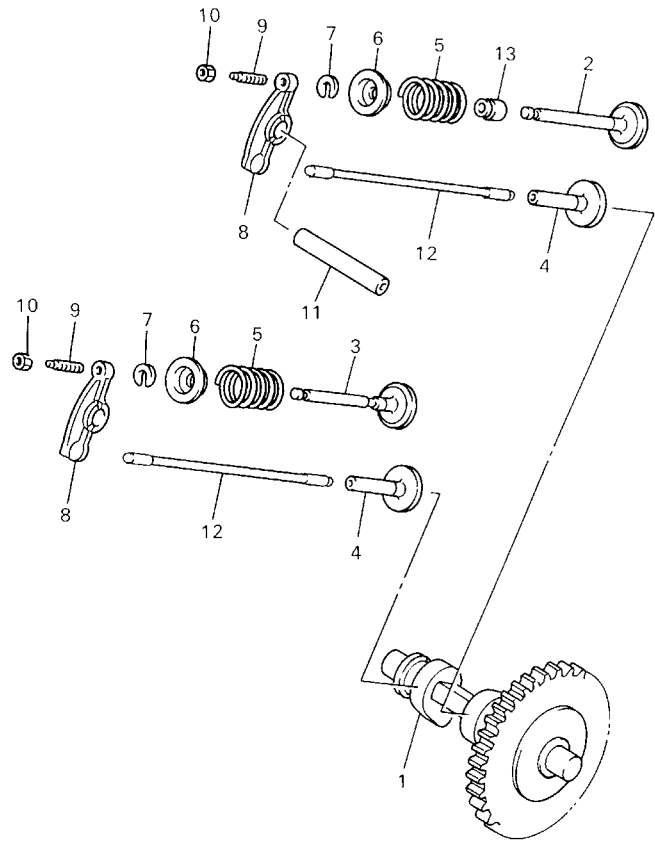



JN7010-6020

FIG. 3 CRANKSHAFT & PISTON

REF. NO.	PART NO.	DESCRIPTION	JU61				REMARKS
1	JN6-11400-00	CRANKSHAFT ASSY	1				
2	JR7-11631-00-A0	PISTON (STD)	1				
	JR7-11635-00	PISTON (0.25MM O/S)	1				AP
	JR7-11636-00	PISTON (0.50MM O/S)	1				AP
3	JR7-11610-00	PISTON RING SET (STD)	1				
	JR7-11610-10	PISTON RING SET (0.25MM O/S)	1				AP
	JR7-11610-20	PISTON RING SET (0.50MM O/S)	1				AP
4	583-11633-00	PIN, PISTON	1				
5	93450-21053	CIRCLIP	2				
6	JN6-11650-00	CONNECTING ROD ASSY	1				
7	JN6-11654-00	BOLT, CONNECTING ROD	2				
8	JN6-11454-00	WEIGHT 1	1				

FIG. 4 CAMSHAFT & VALVE



REF. NO.	PART NO.	DESCRIPTION	JU61				REMARKS
1	JR7-12170-00	CAMSHAFT ASSY 1	1				
2	JN6-12111-01	VALVE, INTAKE	1				
3	7RH-12121-00	VALVE, EXHAUST	1				
4	JN6-12153-00	LIFTER, VALVE	2				
5	90501-264A9	SPRING, COMPRESSION	2				
6	J38-12117-01	RETAINER, VALVE SPRING	2				
7	J38-12118-00	COTTER, VALVE	2				
8	JN6-12151-00	ARM, VALVE ROCKER	2				
9	22F-12159-00	SCREW, VALVE ADJUSTING	2				
10	90170-05302	NUT	2				
11	J38-12156-00	SHAFT, ROCKER 2	1				
12	JR7-12154-01	ROD, VALVE PUSH	2				
13	4G0-12119-00	SEAL, VALVE STEM	1				

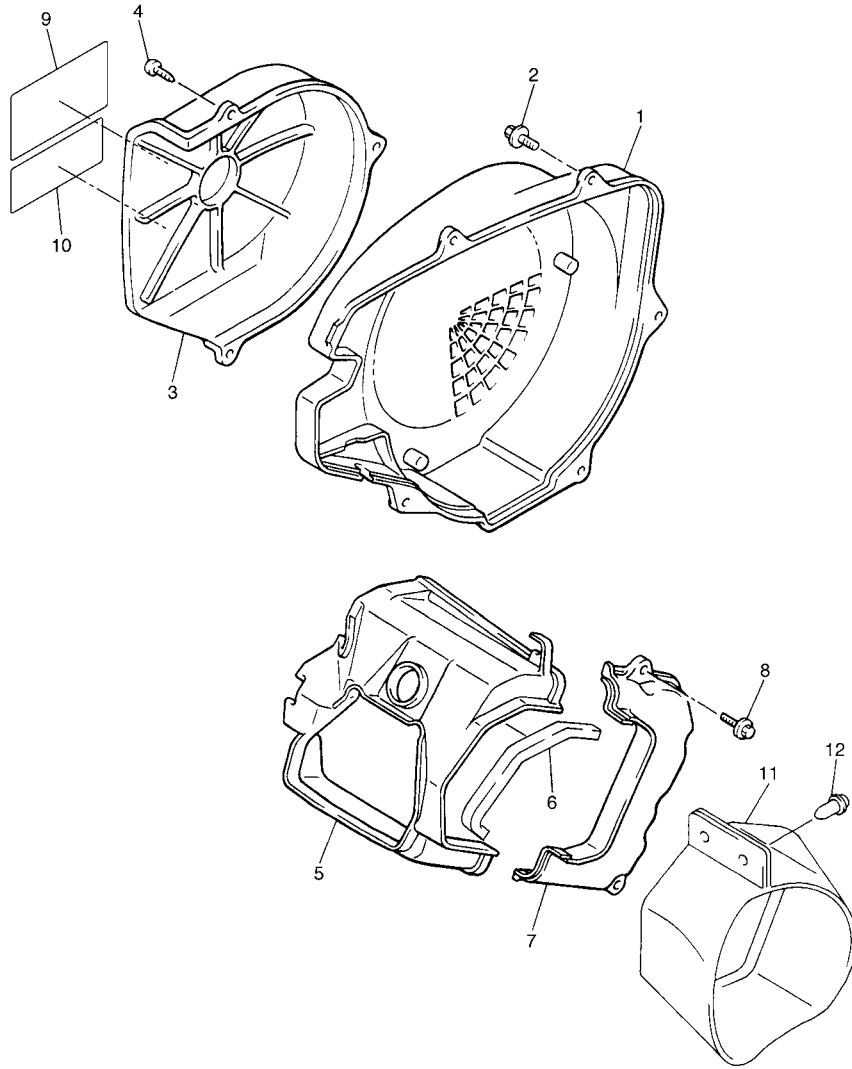


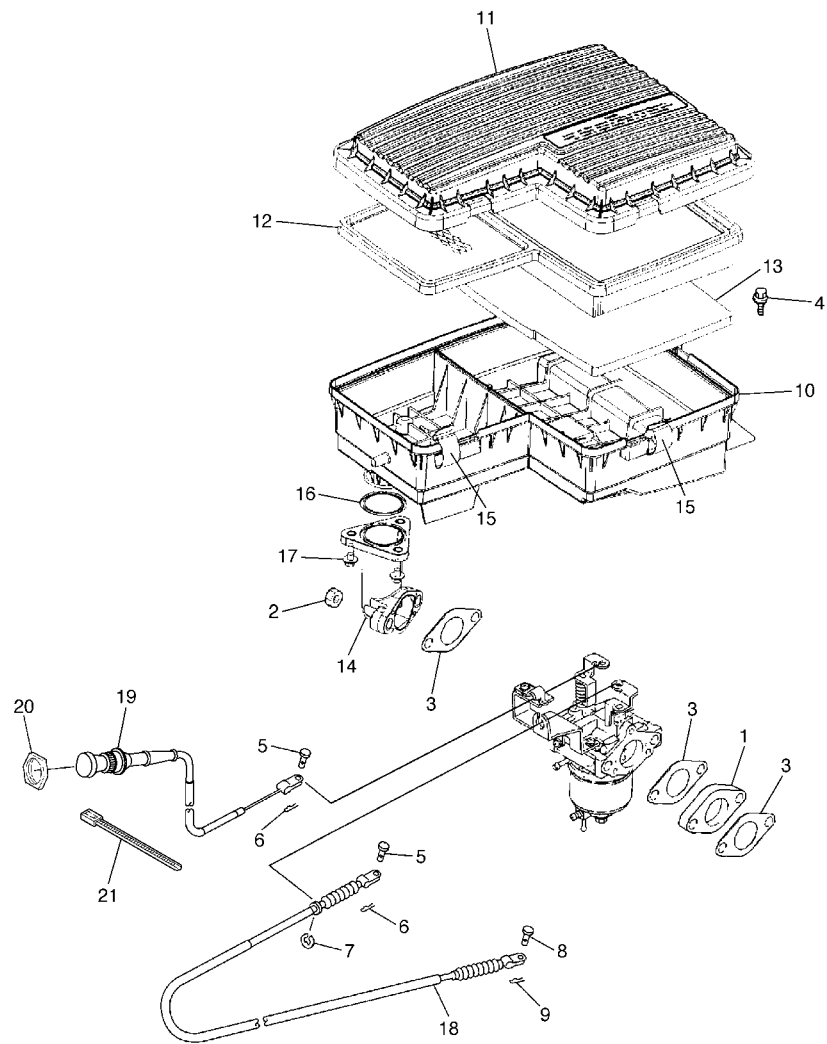
FIG. 5 AIR SHROUD & FAN

REF. NO.	PART NO.	DESCRIPTION	JU51				REMARKS
1	JN6-12621-00	CASE, FAN	1				
2	95807-06020	BOLT, FLANGE	5				
3	JN6-12616-00	COVER, FAN CASE	1				
4	97707-60520	SCREW, TAPPING	3				
5	JN6-12651-00	AIR SHROUD, CYLINDER 1	1				
6	JR7-12658-00	DAMPER, AIR SHROUD 1	1				
7	JN6-12652-00	AIR SHROUD, CYLINDER 2	1				
8	95807-06020	BOLT, FLANGE	2				
9	JR6-2179R-01	PLATE, EPA 2 (CALIFORNIA)	1				
10	7UH-2111F-00	LABEL, EMISSION	1				
11	JN6-E2691-00	DUCT, 1	1				
12	90269-08813	RIVET	2				



JW41110-C050

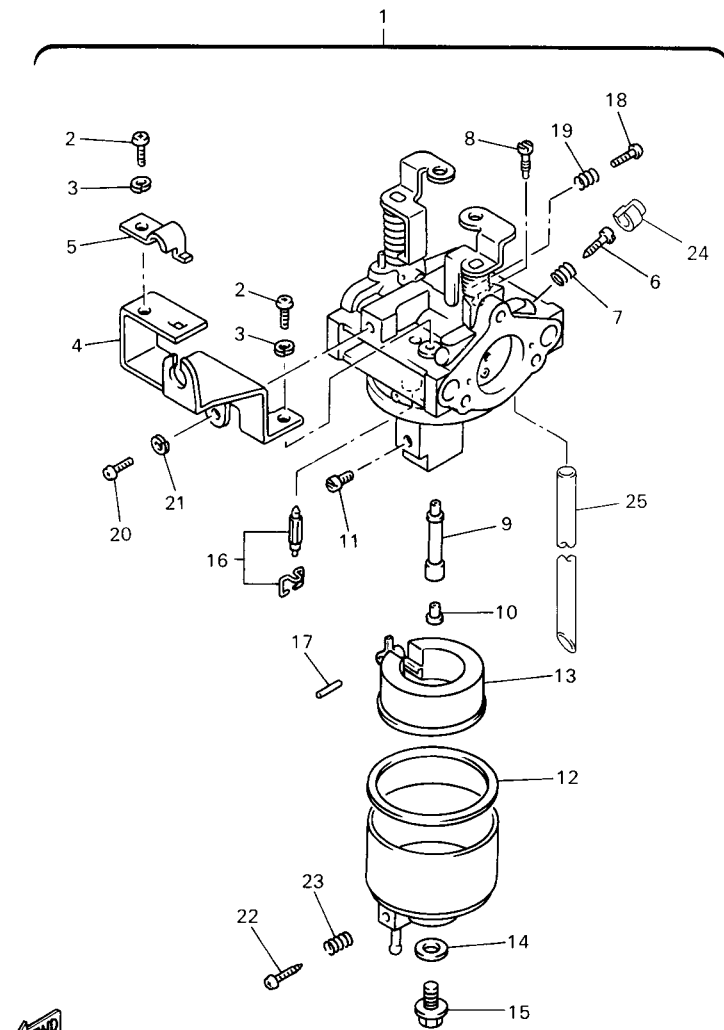
FIG. 6 INTAKE



REF. NO.	PART NO.	DESCRIPTION	JU51				REMARKS
1	JN6-13595-00	JOINT	1				
2	95707-08500	NUT, FLANGE	2				
3	JN6-13567-00	GASKET	3				
4	90119-06838	BOLT, WITH WASHER	2				
5	91701-05010	PIN, CLEVIS	2				
6	90468-10049	CLIP	2				
7	99001-07600	CIRCLIP	1				
8	91701-05010	PIN, CLEVIS	1				
9	90468-10049	CLIP	1				
10	JN6-E4411-02	CASE, AIR CLEANER 1	1				
11	JN6-E4412-01	CAP, CLEANER CASE 1	1				
12	JN6-E4450-01	ELEMENT ASSY, AIR CLEANER	1				
13	JN6-E445E-00	FILTER 1	1				
14	JN6-E3586-01	JOINT, CARBURETOR 1	1				
15	JN6-E4424-00	CLIP, CAP FITTING	5				
16	93210-398D6	O-RING	1				
17	90105-06862	BOLT, FLANGE	3				
18	JN6-F6312-01	CABLE, THROTTLE 2	1				
19	J55-F6331-11	CABLE, STARTER 1	1				
20	JN6-F6333-10	NUT	1				
21	90464-31827	CLAMP	1				



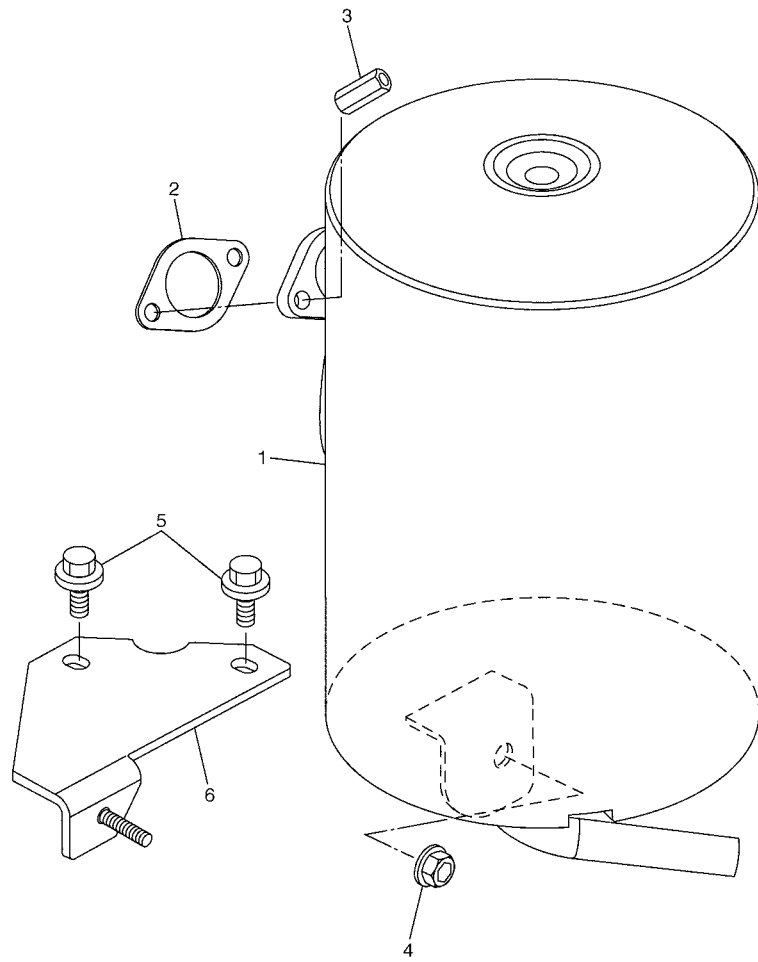
JW51110-C060



JR61100-1060

FIG. 7 CARBURETOR

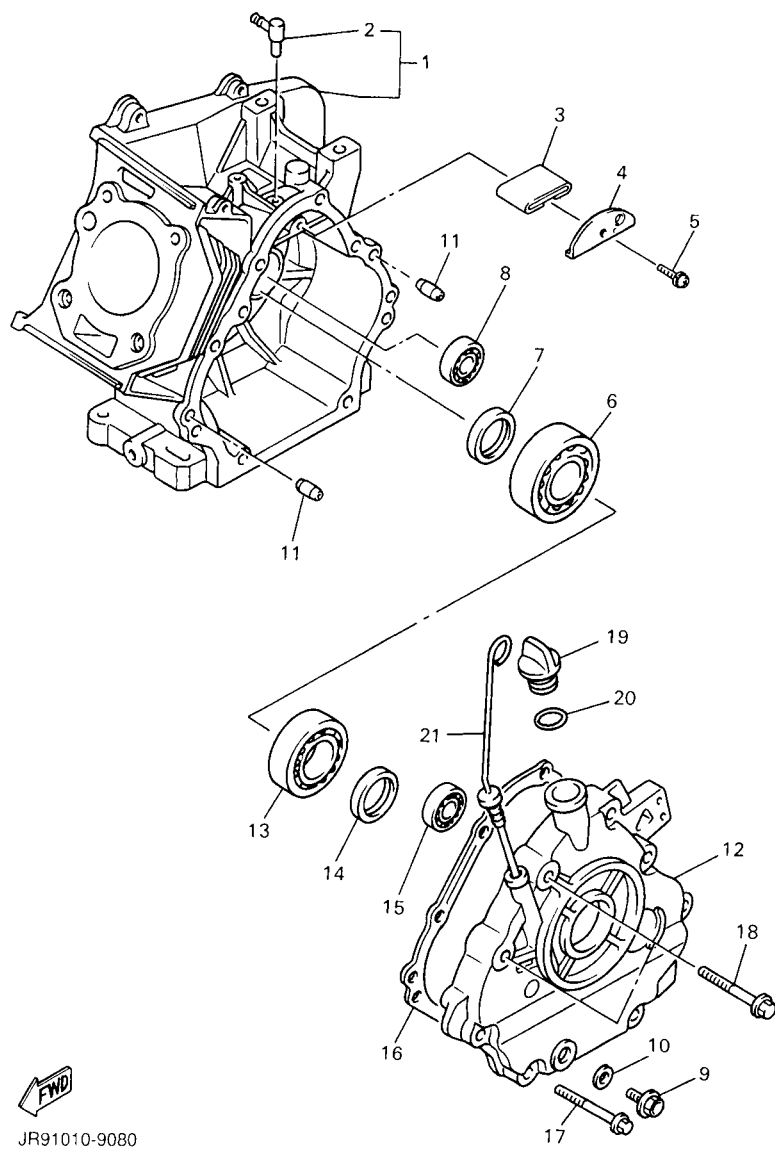
REF. NO.	PART NO.	DESCRIPTION	JU51				REMARKS
1	JR6-14101-00	CARBURETOR ASSY 1	1				
2	98507-05008	.SCREW, PAN HEAD	2				
3	92990-05100	.WASHER, SPRING	2				
4	JN6-14291-00	.BRACKET 1	1				
5	J10-14227-00	.PLATE	1				
6	7NJ-14211-00	.SCREW, PILOT ADJUSTING	1				
7	73A-14212-10	.SPRING	1				
8	732-14142-65-A0	.JET, PILOT (# 65)	1				
9	JN6-1495H-3B	.NOZZLE, MAIN	1				
10	73A-1414G-00	.PIPE, MAIN BREED	1				
11	3G2-1423A-68-A0	.JET, MAIN (# 87.5)	1				STD
	3G2-1423A-67	.JET, MAIN (# 82.5)	1				AP
	3G2-1423E-33-A0	.JET, MAIN (#83.8)	1				AP
12	796-14184-00	.GASKET, FLOAT CHAMBER	1				
13	JN6-14185-00	.FLOAT	1				
14	127-14198-00	.GASKET	1				
15	7R1-14162-00	.BOLT, HOLDING	1				
16	JN5-14150-00	.NEEDLE ASSY	1				
17	22F-14186-00	.PIN, FLOAT	1				
18	1WG-14922-00	.SCREW, THROTTLE	1				
19	73A-14212-10	.SPRING	1				
20	98507-04010	.SCREW, PAN HEAD	1				
21	92902-04100	.WASHER, SPRING	1				
22	7E1-14191-00	.PLUG, DRAIN	1				
23	73A-14212-00	.SPRING	1				
24	7LV-14118-00	.CAP	1				
25	1KT-14197-01	.PIPE	1				



JT71010-B070

FIG. 8 EXHAUST

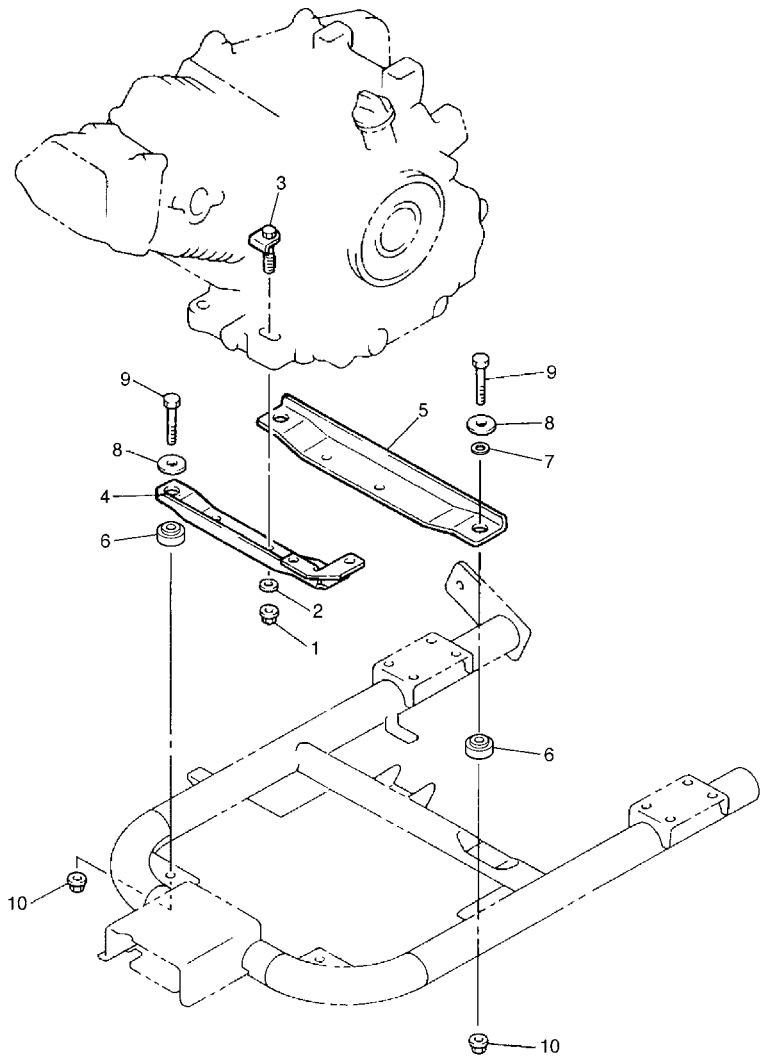
REF. NO.	PART NO.	DESCRIPTION	JU51					REMARKS
1	JU0-E4710-10	MUFFLER ASSY 1	1					
2	7KY-14613-01	GASKET, EXHAUST 1	1					
3	90179-08879	NUT	2					
4	90185-08841	NUT, SELF-LOCKING	1					
5	90119-08825	BOLT, WITH WASHER	2					
6	JN6-F1435-10	BRACKET, MUFFLER 1	1					



JR91010-9080

FIG. 9 CRANKCASE

REF. NO.	PART NO.	DESCRIPTION	JU51				REMARKS
1	JR7-15100-00	CRANKCASE ASSY	1				
2	JN6-15155-00	.NOZZLE 3	1				
3	JR7-15407-00	ELEMENT 1	1				
4	JR7-15123-00	PLATE, BUFFLE 1	1				
5	90159-06107	SCREW, WITH WASHER	1				
6	93306-30709	BEARING	1				
7	93102-35014	OIL SEAL	1				
8	93306-20201	BEARING (B6202)	1				
9	90340-12097	PLUG, STRAIGHT SCREW	1				
10	812-11198-00	GASKET	1				
11	99530-08016	PIN, DOWEL	2				
12	JN6-15411-00	COVER, CRANKCASE 1	1				
13	93306-20714	BEARING	1				
14	93102-35014	OIL SEAL	1				
15	93306-20201	BEARING (B6202)	1				
16	JN6-15451-02	GASKET, CRANKCASE COVER 1	1				
17	95817-08045	BOLT, FLANGE	6				
18	95817-10050	BOLT, FLANGE	2				
19	796-15363-01	PLUG, OIL	1				
20	93210-22344	O-RING	1				
21	J38-15361-00	GAUGE, LEVEL	1				

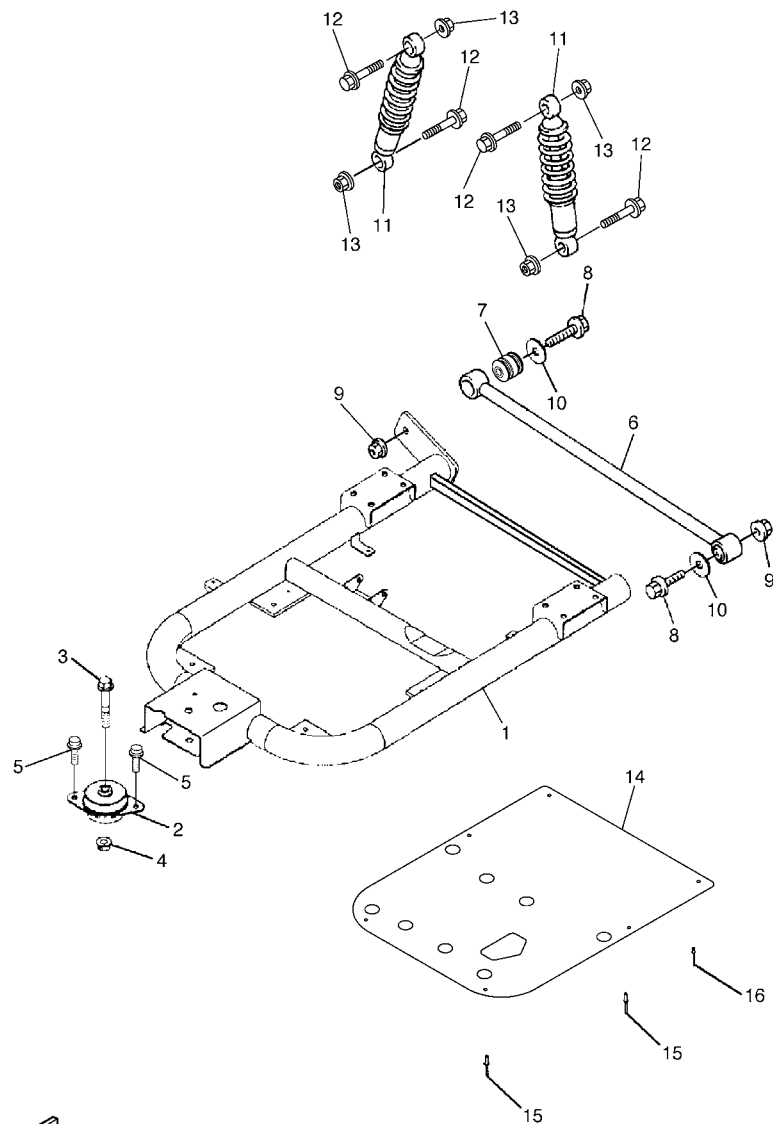


JW51110-C100

FIG. 10 ENGINE BRACKET

REF. NO.	PART NO.	DESCRIPTION	JU61			REMARKS
1	9560P-10200	NUT, FLANGE	4			
2	9290P-10200	WASHER	4			
3	JN6-F1481-00	BOLT, ENGINE MOUNTING 1	4			
4	JN6-F1411-00	BRACKET, ENGINE 1	1			
5	JN6-F1419-02	BRACKET, ENGINE 2	1			
6	JR3-F1459-00	SPACER	4			
7	9299R-08200	WASHER	2			
8	90201-088K6	WASHER, PLATE	4			
9	90101-08880	BOLT	4			
10	90179-08885	NUT	4			

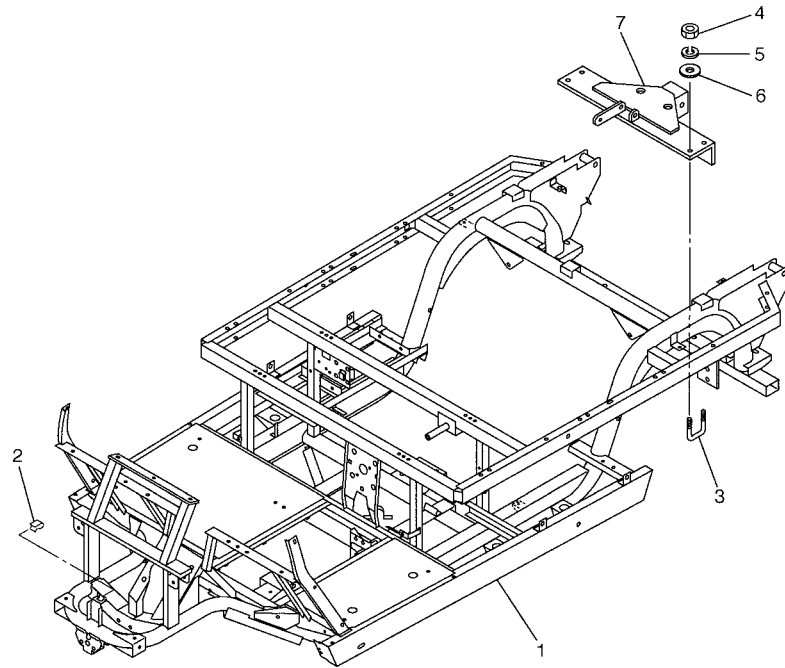
FIG. 11 REAR ARM & SUSPENSION



JU51110-C110

REF. NO.	PART NO.	DESCRIPTION	JU51				REMARKS
1	JN6-F2110-02	REAR ARM COMP.	1				
2	JN6-F2123-10	BUSH 1	1				
3	90105-13864	BOLT, FLANGE	1				
4	90179-13878	NUT	1				
5	9751P-10620	BOLT, WITH WASHER	2				
6	JN6-F217G-00	ROD, CONNECTING 2	1				
7	JN6-F2124-10	BUSH 2	2				
8	9581P-12065	BOLT, FLANGE	2				
9	9560P-12200	NUT, FLANGE	2				
10	90201-128S4	WASHER, PLATE	2				
11	JR6-F2210-00	SHOCK ABSORBER ASSY, REAR	2				
12	9581P-12065	BOLT, FLANGE	4				
13	90185-12072	NUT, SELF-LOCKING	4				
14	JN6-F2128-01	COVER, THRUST 1	1				
15	90267-48850	RIVET, BLIND	4				
16	90267-40851	RIVET, BLIND	2				

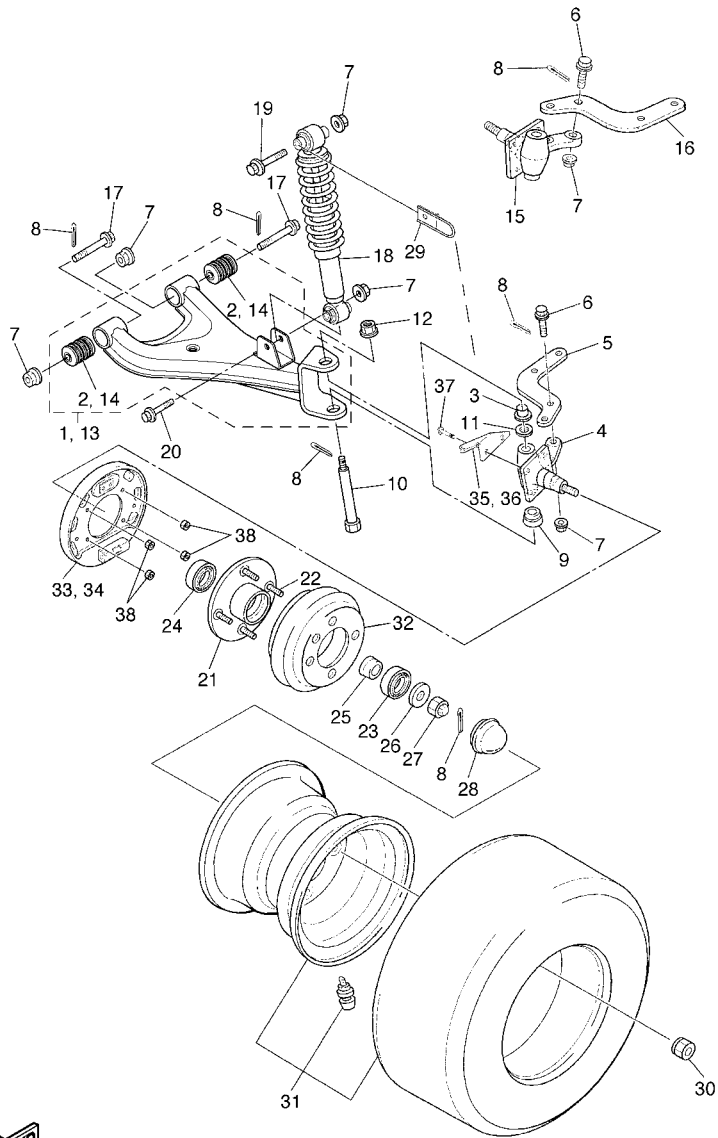
FIG. 12 FRAME



REF. NO.	PART NO.	DESCRIPTION	JU51				REMARKS
1	JU5-F2501-01	FRAME COMP.	1				
2	JU0-F2567-00	SUPPORT 1	1				
3	90109-10862	BOLT	2				
4	90170-10847	NUT	4				
5	9290P-10100	WASHER	4				
6	9290P-10200	WASHER	4				
7	JW5-F722B-00	BAR, TOW	1				



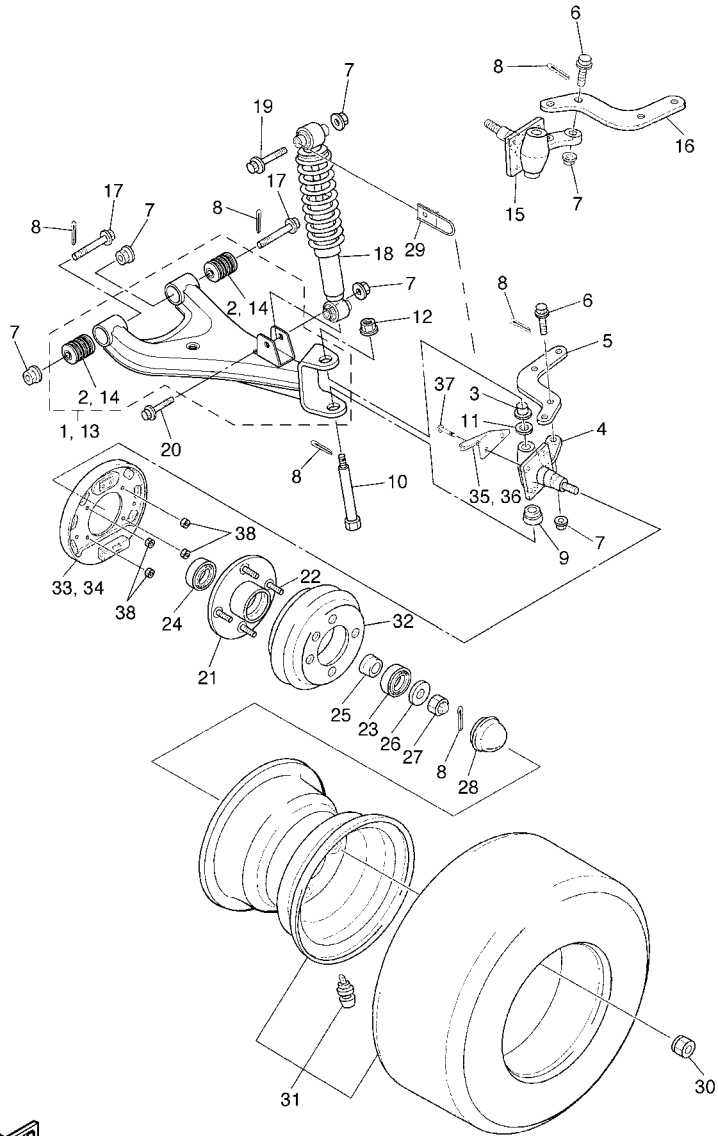
JU51110-C120



JU51110-C130

FIG. 13 FRONT SUSPENSION & WHEEL

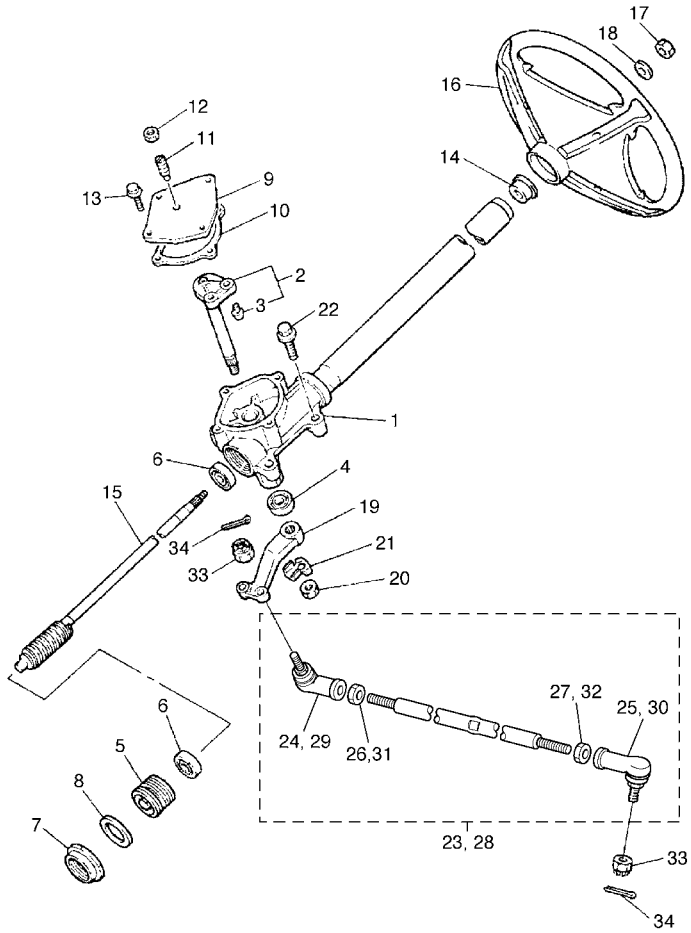
REF. NO.	PART NO.	DESCRIPTION	JU51				REMARKS
1	JU5-F3570-10	FRONT LOWER ARM COMP. (LEFT)	1				
2	JN6-F3526-00	.BUSH	2				
3	90384-15825	BUSH, BIMETAL FORMED	2				
4	JR6-F3501-10	STEERING KNUCKLE ASSY (LEFT)	1				
5	JN3-F3512-00	ARM, KNUCKLE 1	1				
6	90105-10895	BOLT, FLANGE	4				
7	95607-10200	NUT, U FLANGE	12				
8	91401-25020	PIN, COTTER	12				
9	J38-23527-00	SEAL, DUST 1	2				
10	JR6-F3516-00	KING PIN, STEERING KNUCKLE	2				
11	90201-158S6	WASHER, PLATE	2				
12	9560P-10200	NUT, FLANGE	2				
13	JU5-F3580-10	FRONT LOWER ARM COMP. (RIGHT)	1				
14	JN6-F3526-00	.BUSH	2				
15	JR6-F3502-10	STEERING KNUCKLE ASSY (RIGHT)	1				
16	JN3-F3512-00	ARM, KNUCKLE 1	1				
17	90105-10894	BOLT, FLANGE	4				
18	JR6-F3350-00	SHOCK ABSORBER ASSY	2				
19	95807-10065	BOLT, FLANGE	2				
20	95807-10055	BOLT, FLANGE	2				
21	JR6-F5110-00	HUB ASSY, FRONT	2				
22	90114-12803	BOLT, SERRATION	8				
23	93306-204X0	BEARING	2				
24	93306-005Y3	BEARING	2				
25	90387-241M7	COLLAR	2				
26	90209-32832	WASHER	2				
27	95607-14100	NUT, U	2				



JU51110-C130

FIG. 13 FRONT SUSPENSION & WHEEL

REF. NO.	PART NO.	DESCRIPTION	JU51				REMARKS
28	JN6-F5118-00	COVER, HUB DUST	2				
29	JR6-F1339-00	GUIDE, WIRE	2				
30	90179-12262	NUT	8				
31	JN6-F5100-20	WHEEL ASSY (18X8.50-8 4PLY)	2				
32	J55-G6521-10	DRUM	2				
33	JN6-F7290-03	BACKING PLATE ASSY 2	1				SEE FIG.17 (L.H)
34	JN6-F7280-03	BACKING PLATE ASSY 1	1				SEE FIG.18 (R.H)
35	JR6-F7263-00	BRACKET 1	1				
36	JR6-F7264-00	BRACKET 2	1				
37	9502P-08025	BOLT, FLANGE	8				
38	9560P-08200	NUT	8				



JU91110-C140

FIG. 14 STEERING

REF. NO.	PART NO.	DESCRIPTION	JU51				REMARKS
1	JG5-F3811-00	COLUMN, STEERING	1				
2	J38-23816-00	ARM, PITMAN	1				
3	J38-23836-00	.PIN, PITMAN	2				
4	93102-22082	OIL SEAL	1				
5	J55-F3876-00	BOLT	1				
6	93332-000Y2	BEARING	2				
7	J10-23877-00	NUT	1				
8	J10-23444-00	WASHER	1				
9	JN3-F3818-00	COVER, STEERING	1				
10	J38-23462-01	SEAL, STEERING	1				
11	J10-F3459-00	BOLT	1				
12	90170-08024	NUT	1				
13	95807-06020	BOLT, FLANGE	4				
14	JN3-F3814-00	HOLDER, HANDLE UPPER	1				
15	J10-23840-00	STEERING SHAFT ASSY	1				
16	JN3-F3838-00	WHEEL, STEERING	1				
17	90185-12061	NUT, SELF-LOCKING	1				
18	9290P-12200	WASHER	1				
19	J38-23826-01	ARM, IDLER	1				
20	95707-16300	NUT, FLANGE	1				
21	90215-16814	WASHER, LOCK	1				
22	90105-10880	BOLT, FLANGE	4				
23	JN6-F3830-11	TIE ROD ASSY (L.H)	1				
24	JN6-F3841-00	.JOINT, UNIVERSAL 1	1				
25	JN6-F3845-00	.JOINT, UNIVERSAL 2	1				
26	9530N-10600	.NUT	1				
27	90170-10414	.NUT	1				

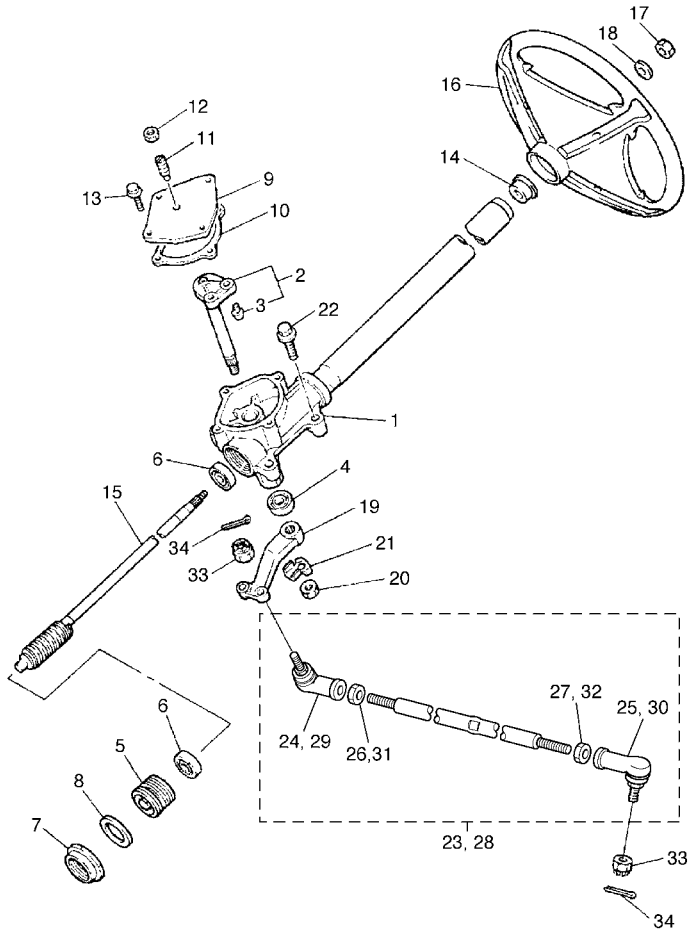
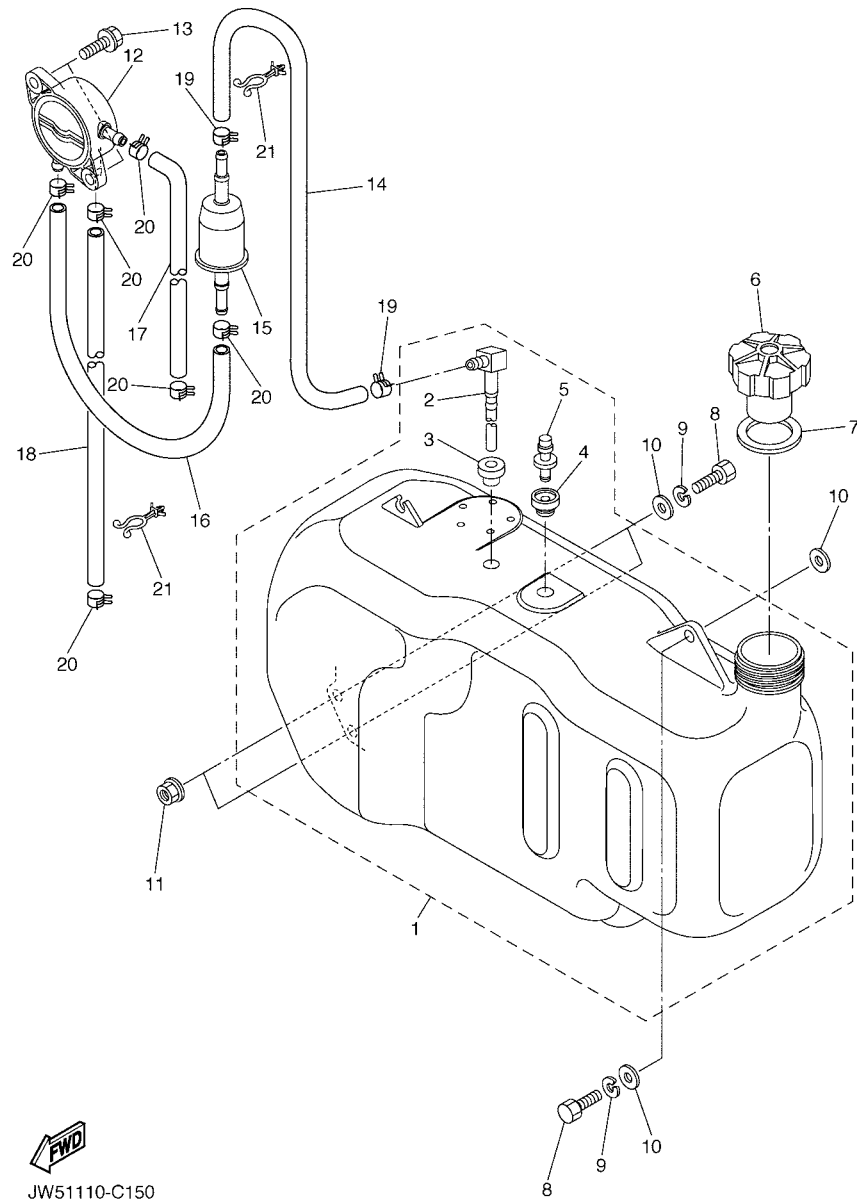


FIG. 14 STEERING

REF. NO.	PART NO.	DESCRIPTION	JU61				REMARKS
28	JN6-F3850-11	TIE ROD ASSY (R.H)	1				
29	JN6-F3841-00	.JOINT, UNIVERSAL 1	1				
30	JN6-F3845-00	.JOINT, UNIVERSAL 2	1				
31	9530N-10600	.NUT	1				
32	90170-10414	.NUT	1				
33	95607-10200	NUT, U FLANGE	4				
34	91401-25020	PIN, COTTER	4				



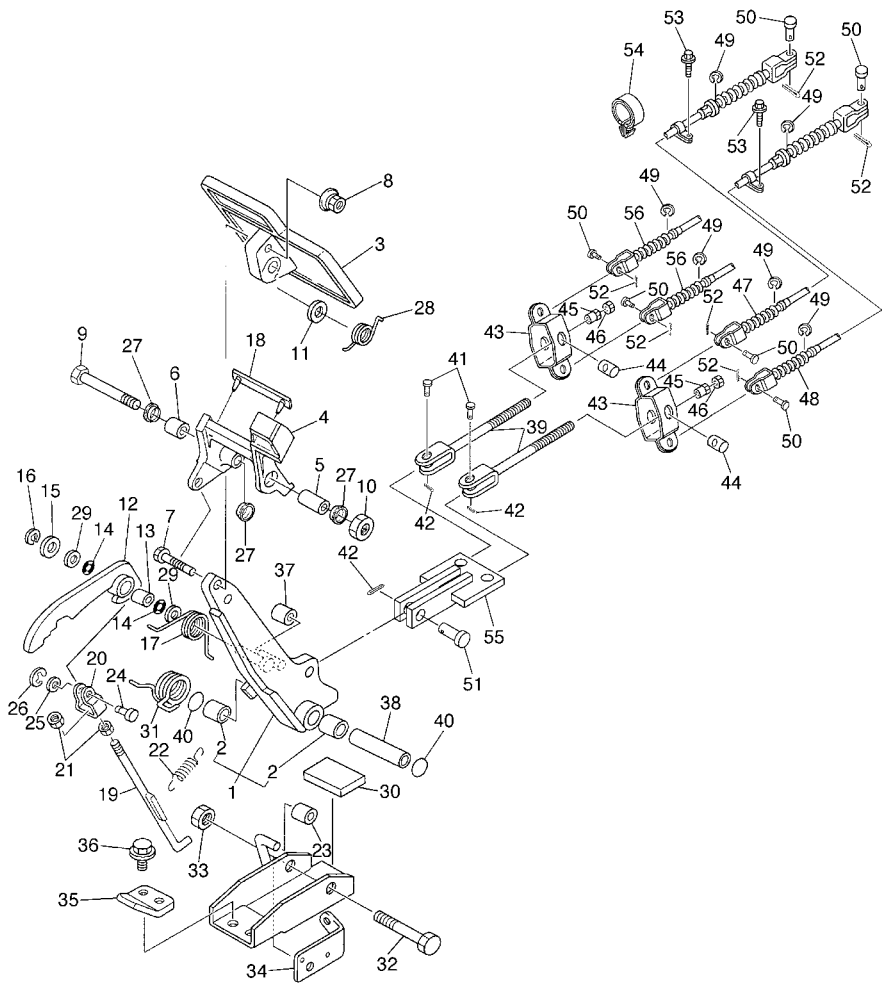
JW51110-C150

FIG. 15 FUEL TANK

REF. NO.	PART NO.	DESCRIPTION	JU51				REMARKS
1	JU5-F4110-00	FUEL TANK COMP.	1				
2	JU5-F4300-00	.FUEL PIPE JOINT	1				
3	JU5-F4375-00	.GROMMET	1				
4	J10-21773-00	.GROMMET	1				
5	J24-24460-01	.RELEASE VALVE ASSY	1				
6	J24-24620-01	BODY CAP ASSY	1				
7	J10-24612-00	GASKET, CAP	1				
8	97007-08025	BOLT	3				
9	92907-08100	WASHER, SPRING	3				
10	90201-088S2	WASHER, PLATE	4				
11	9560P-08200	NUT	2				
12	JN6-F4410-10	FUEL PUMP ASSY	1				
13	JN6-F3394-00	BOLT, SPECIAL	2				
14	JU5-F4312-00	PIPE 2	1				
15	JN6-F4560-00	FILTER ASSY	1				
16	JN6-F4311-20	PIPE, FUEL 1	1				
17	JN6-F4313-20	PIPE 3	1				
18	JN6-F4314-20	PIPE 4	1				
19	90467-12845	CLIP	2				
20	90467-10846	CLIP	6				
21	90464-11816	CLAMP	2				

FIG. 16 BRAKE

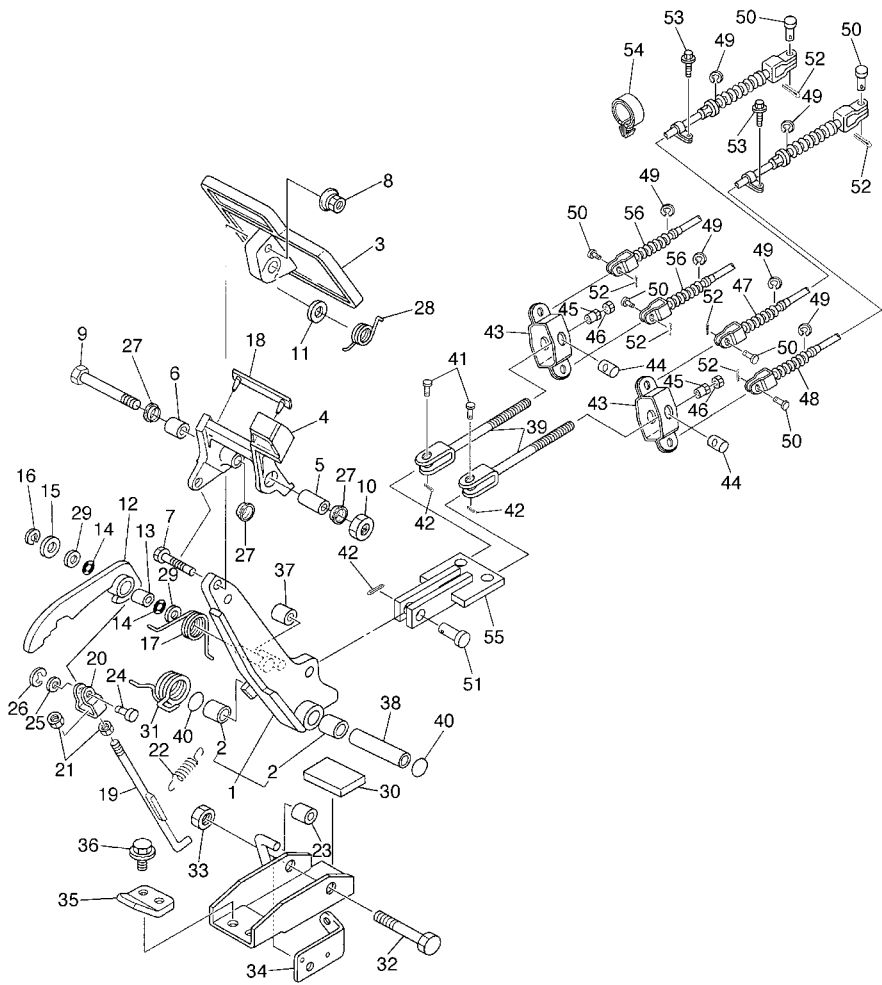
REF. NO.	PART NO.	DESCRIPTION	JU51				REMARKS
1	J46-27250-03	BRAKE ARM COMP.	1				
2	90384-14080	.BUSH, BIMETAL FORMED	2				
3	JU0-27211-01	PEDAL, BRAKE	1				
4	JU0-25671-00	PEDAL, PARKING BRAKE	1				
5	90387-08014	COLLAR	1				
6	90387-08013	COLLAR	1				
7	97027-06035	BOLT	1				
8	90179-07564	NUT	1				
9	97027-08100	BOLT	1				
10	95307-08600	NUT	1				
11	92907-08200	WASHER	1				
12	J17-25666-02	SECTOR, PARKING BRAKE	1				
13	90384-10162	BUSH, BIMETAL FORMED	1				
14	J17-27221-00	SEAL, SHAFT	2				
15	92907-10600	WASHER, PLATE	1				
16	99001-07600	CIRCLIP	1				
17	90508-14548	SPRING, TORSION	1				
18	J17-25672-01	PAD, PARKING PEDAL	1				
19	J17-27231-03	ROD, BRAKE	1				
20	J17-27232-00	END, ROD 2	1				
21	95307-06700	NUT	2				
22	90506-09001	SPRING, TENSION	1				
23	J17-25673-00	DAMPER, BRAKE	1				
24	J17-27228-00	PIN, JOINT	1				
25	92907-05600	WASHER, PLATE	1				
26	99001-04600	CIRCLIP	1				
27	90387-12009	COLLAR	3				



JU51110-C160

FIG. 16 BRAKE

REF. NO.	PART NO.	DESCRIPTION	JU51				REMARKS
28	90508-32015	SPRING, TORSION	1				
29	90201-104G8	WASHER, PLATE	2				
30	JN3-F7245-00	PAD, BRAKE PEDAL	1				
31	90508-40007	SPRING, TORSION	1				
32	90101-10884	BOLT	1				
33	95607-10200	NUT, U FLANGE	1				
34	J55-2252M-00	BRACKET, 3	1				
35	J17-27246-00	NAIL, BRAKE	1				
36	90105-08878	BOLT, FLANGE	2				
37	J17-25673-00	DAMPER, BRAKE	1				
38	90387-107F8	COLLAR	1				
39	JN6-F5685-00	ROD	2				
40	93210-132A8	O-RING	2				
41	91701-10022	PIN, CLEVIS	2				
42	91490-30015	PIN, COTTER	3				
43	J10-25681-00	EQUALIZER, BRAKE	2				
44	90249-14129	PIN	2				
45	90179-08894	NUT	2				
46	95307-08700	NUT	2				
47	JJ3-F6341-01	CABLE, BRAKE	1				
48	JJ3-F6351-02	CABLE, BRAKE	1				
49	99001-09600	CIRCLIP	8				
50	91701-08018	PIN, CLEVIS	8				
51	91701-10028	PIN, CLEVIS	1				
52	91490-25015	PIN, COTTER	8				
53	90105-06876	BOLT, FLANGE	2				
54	90464-19815	CLAMP	1				



JU51110-C160

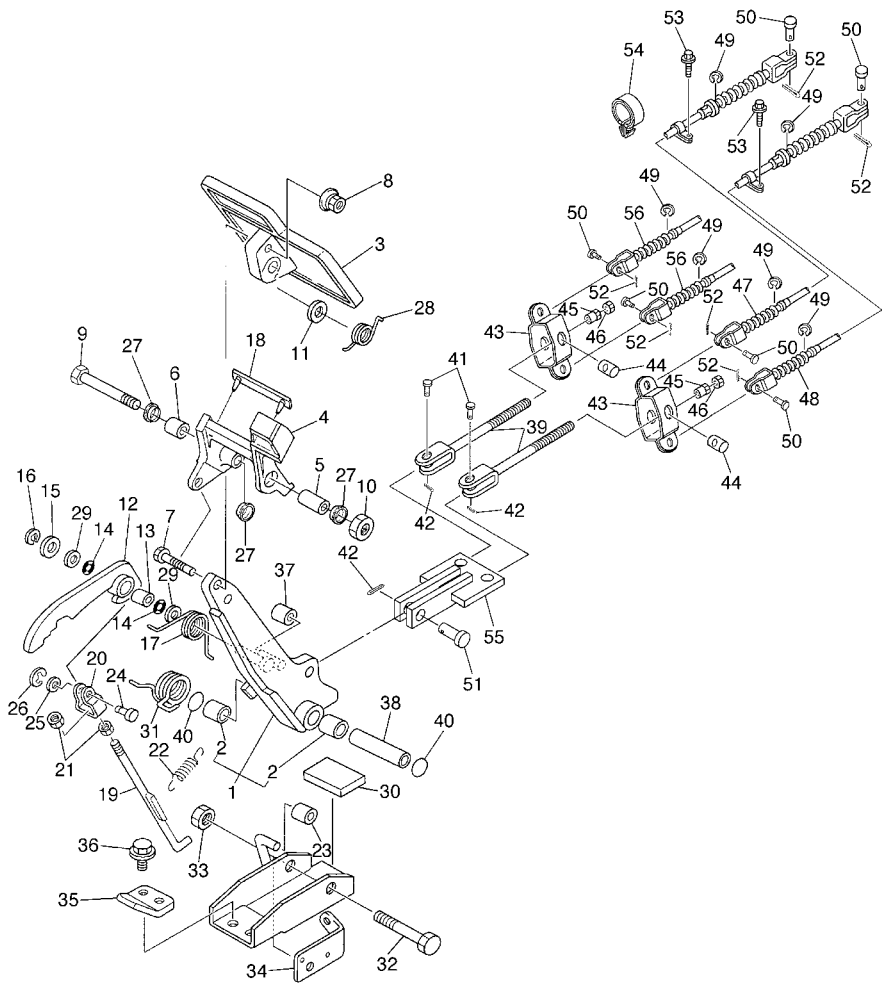


FIG. 16 BRAKE

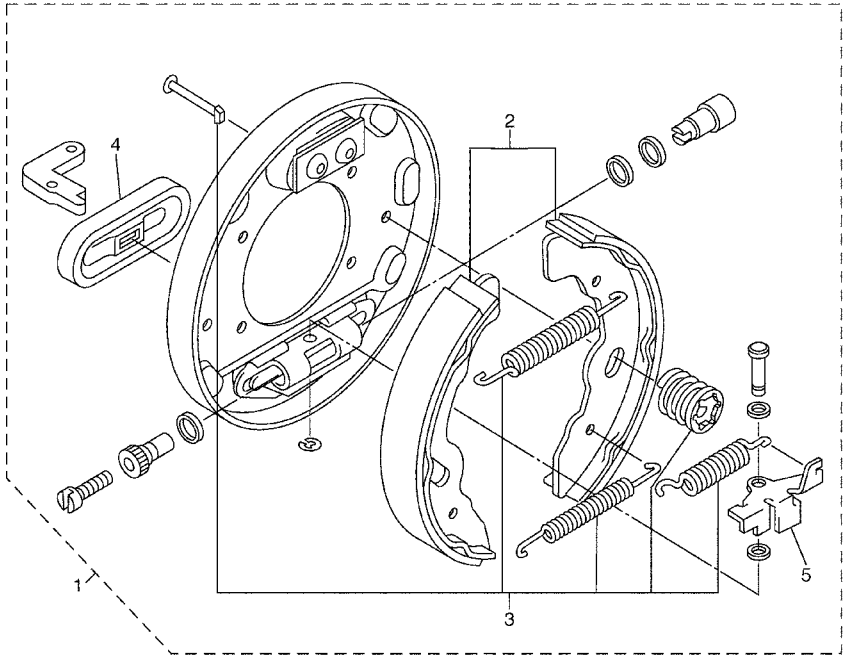
REF. NO.	PART NO.	DESCRIPTION	JU51					REMARKS
55	JR6-F7215-00	LINK	1					
56	JR6-F6361-00	CABLE, BRAKE	2					



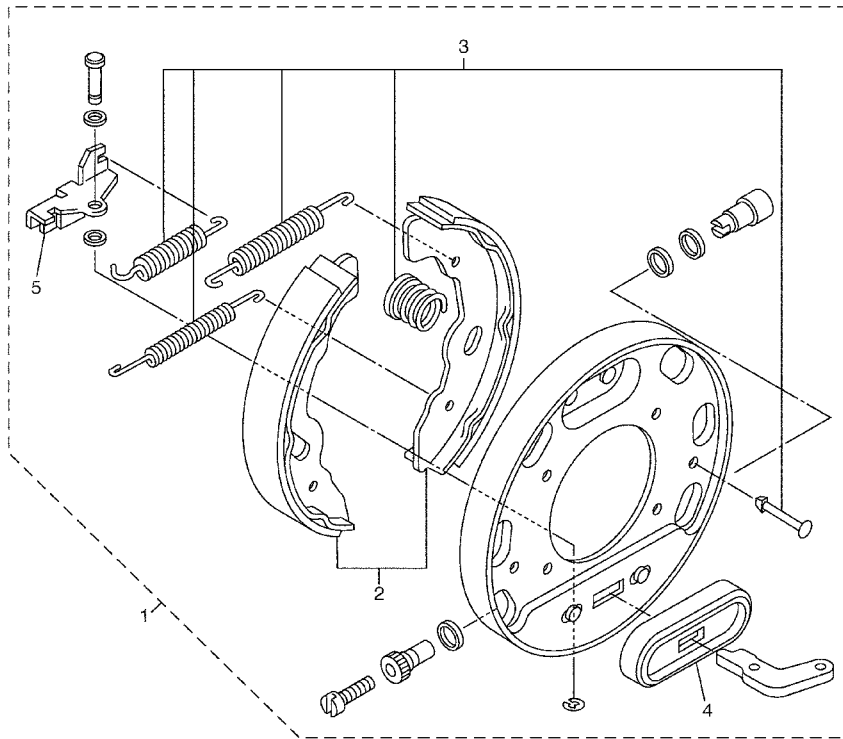
JU51110-C160

FIG. 17 BRAKE 2

REF. NO.	PART NO.	DESCRIPTION	JU61				REMARKS
1	JN6-F7290-03	BACKING PLATE ASSY 2	2				L/S FRONT&REAR
2	JN6-F5331-01	.SHOE, BRAKE 1	1				
3	JN6-F819G-00	.REPAIR PARTS KIT	1				
4	JN6-F7286-00	.COVER, DUST	1				
5	JN6-F722E-00	.LEVER, ADJUSTOR (LH)	1				



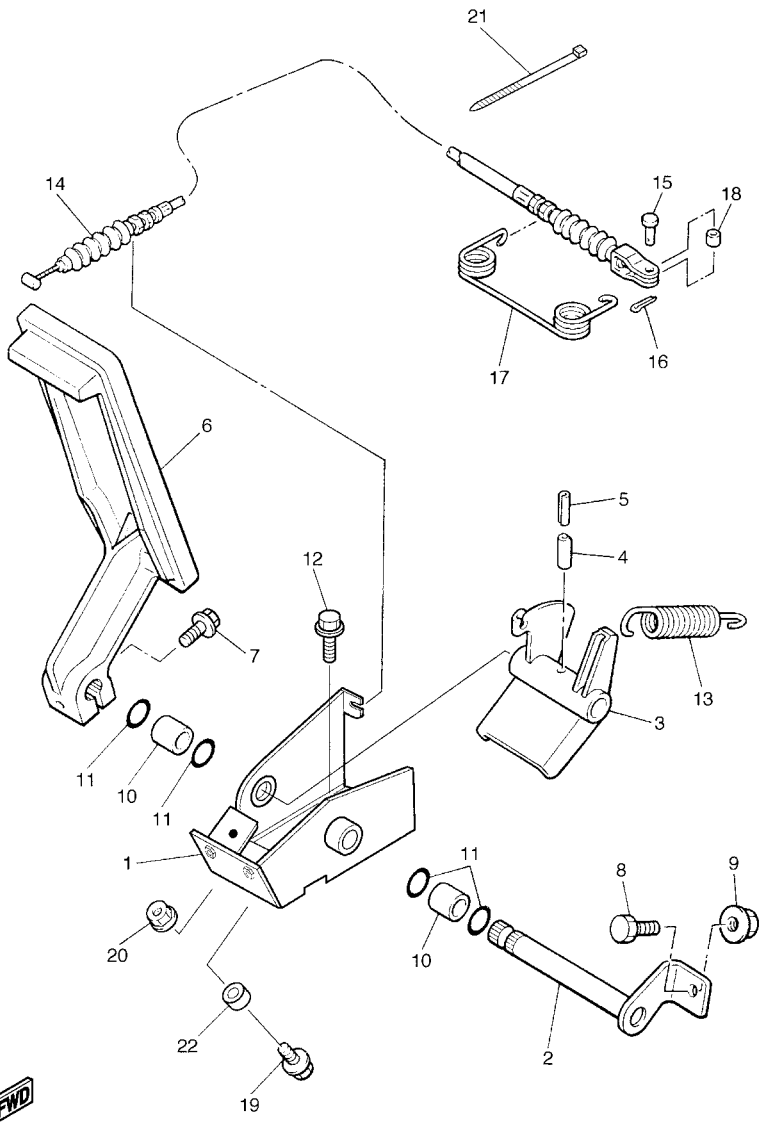
JT71010-B161



JT71010-B171

FIG. 18 BRAKE 3

REF. NO.	PART NO.	DESCRIPTION	JU61				REMARKS
1	JN6-F7280-03	BACKING PLATE ASSY 1	2				R/S FRONT&REAR
2	JN6-F5341-01	.SHOE, BRAKE 2	1				
3	JN6-F819G-00	.REPAIR PARTS KIT	1				
4	JN6-F7286-00	.COVER, DUST	1				
5	JN6-F722F-00	.LEVER, ADJUSTOR (RH)	1				

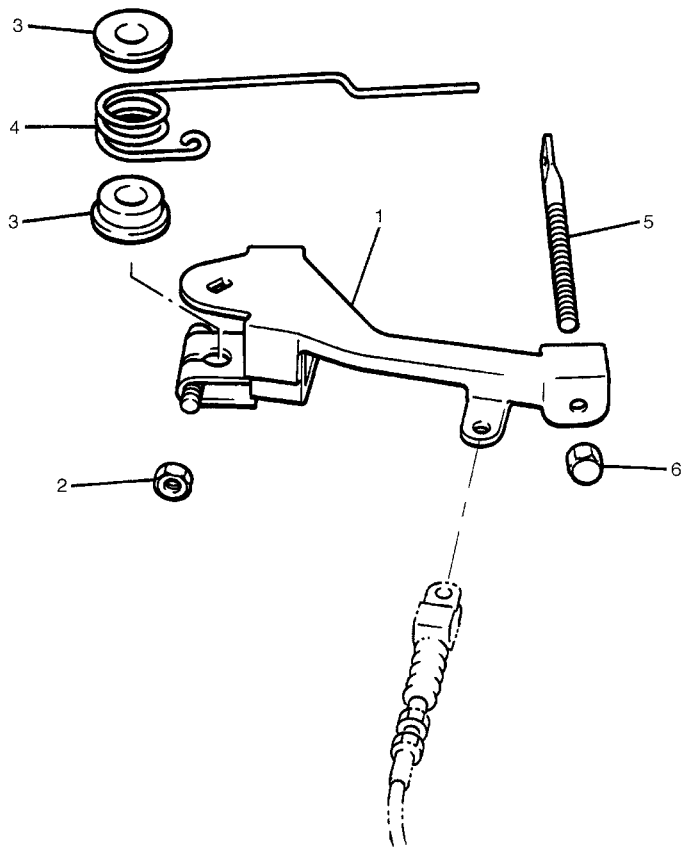


FWD
JT71010-B180

FIG. 19 ACCELERATOR

REF. NO.	PART NO.	DESCRIPTION	JU51				REMARKS
1	JN6-F7874-01	BRACKET, ACCELERATOR PEDAL	1				
2	J17-27853-01	SHAFT, PEDAL 1	1				
3	J38-27872-00	ARM, ACCELERATOR PEDAL	1				
4	91609-60028	PIN, SPRING	1				
5	91609-35028	PIN, SPRING	1				
6	J10-27871-01	PEDAL, ACCELERATOR	1				
7	95807-06025	BOLT, FLANGE	1				
8	90106-08806	BOLT	1				
9	95707-08500	NUT, FLANGE	1				
10	90384-14080	BUSH, BIMETAL FORMED	2				
11	93210-14104	O-RING	4				
12	90105-08878	BOLT, FLANGE	3				
13	90506-26282	SPRING, TENSION	1				
14	JJ3-F6311-00	CABLE, THROTTLE 1	1				
15	91701-05012	PIN, CLEVIS	1				
16	90468-10049	CLIP	1				
17	90508-16460	SPRING, TORSION	1				
18	90560-05001	SPACER	1				
19	95807-06025	BOLT, FLANGE	1				
20	95707-06500	NUT, FLANGE	1				
21	90464-40825	CLAMP	2				
22	90387-068T4	COLLAR	1				

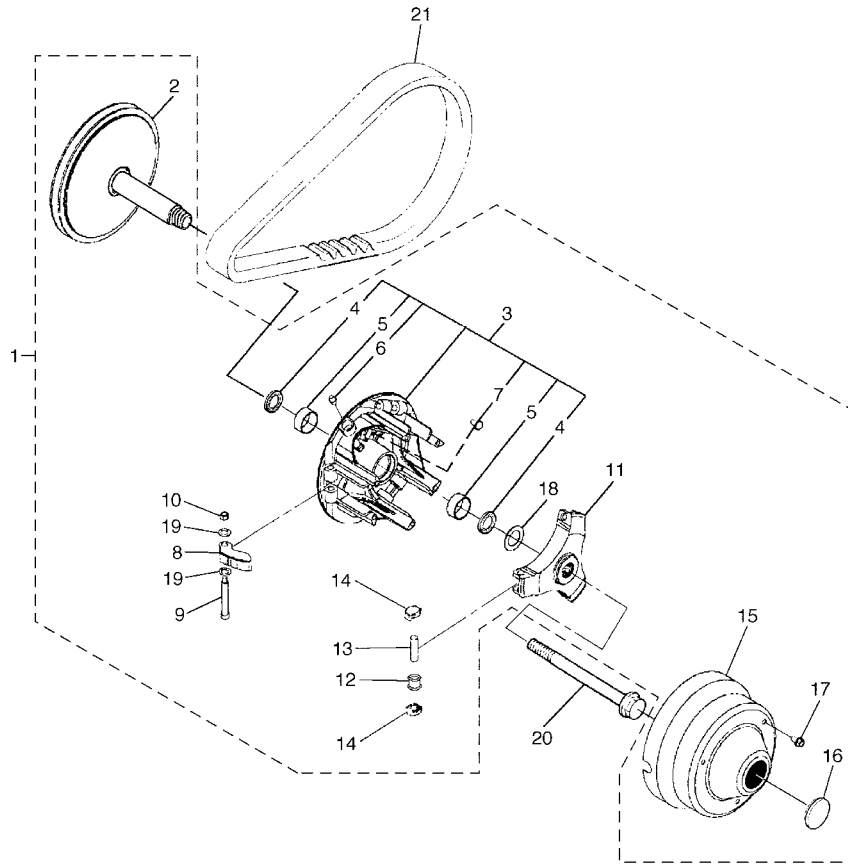
FIG. 20 GOVERNOR



REF. NO.	PART NO.	DESCRIPTION	JU61				REMARKS
1	J38-27951-00	LEVER, SPEED LIMITER	1				
2	95307-06600	NUT	1				
3	90386-08141	BUSH	2				
4	90508-40678	SPRING, TORSION	1				
5	J38-27959-00	SCREW, ADJUSTING	1				
6	9560P-06200	NUT, FLANGE	1				



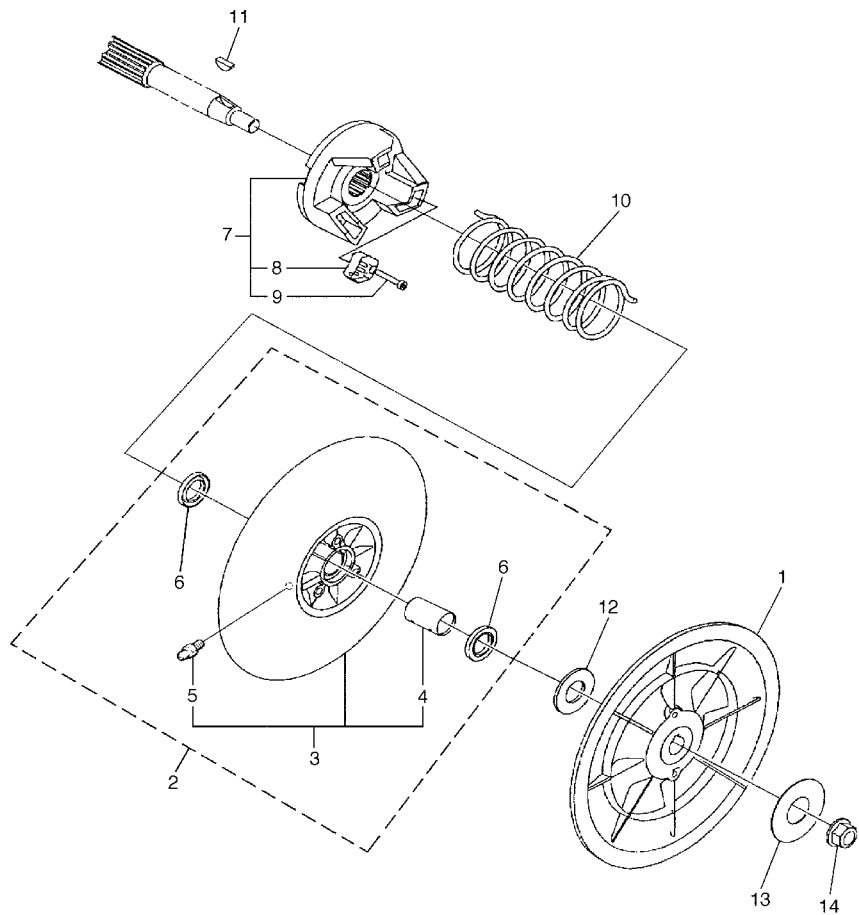
JT71010-B190



JT71010-B200

FIG. 21 PRIMARY SHEAVE

REF. NO.	PART NO.	DESCRIPTION	JU51				REMARKS
1	JN6-G6201-04	PRIMARY FIXED SHEAVE ASSY	1				
2	JN6-G6210-00	.PRIMARY FIXED SHEAVE COMP.	1				
3	JN6-G6220-00	.PRIMARY SLIDING SHEAVE COMP.	1				
4	93101-28831	..OIL SEAL	2				
5	90384-27823	..BUSH, BIMETAL FORMED	2				
6	93700-06810	..NIPPLE, GREASE	1				
7	90338-04840	..PLUG	3				
8	JN6-G6232-01	.WEIGHT 1	3				
9	90109-06860	.BOLT	3				
10	90185-06834	.NUT, SELF-LOCKING	3				
11	JN6-G6251-01	.SPIDER	1				
12	JN6-G6258-02	.COLLAR, ROLLER	3				
13	93610-358A3	.PIN, DOWEL	3				
14	JN6-G6253-00	.SLIDER	6				
15	JU0-G6231-00	.CAP	1				
16	JU0-G6297-00	.COVER, DUST	1				
17	90105-06861	.BOLT, FLANGE	3				
18	90201-228K5	.WASHER, PLATE	1				
19	JN6-G621F-00	.SHIM, THRUST	6				
20	JN6-G6249-00	BOLT	1				
21	J55-G6241-00	V-BELT	1				



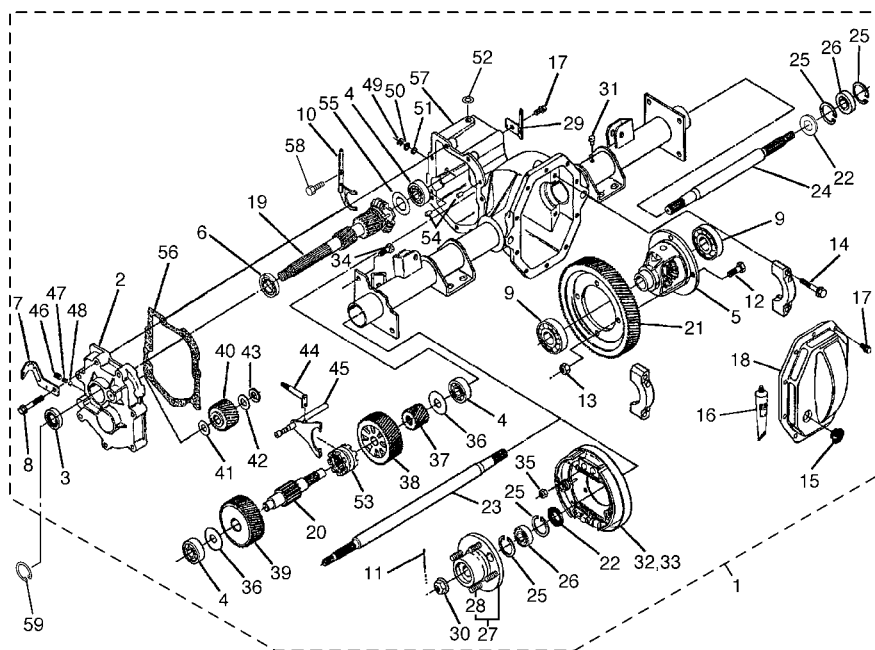
JT71010-B210

FIG. 22 SECONDARY SHEAVE

REF. NO.	PART NO.	DESCRIPTION	JU51				REMARKS
1	JN6-G6260-00	SECONDARY FIXED SHEAVE COMP.	1				
2	JN6-G6270-01	SECONDARY SLIDING SHEAVE COMP.	1				
3	JN6-G6271-02	.SECONDARY SLIDING SHEAVE	1				
4	90384-20824	..BUSH, BIMETAL FORMED	1				
5	93700-06809	..NIPPLE, GREASE	1				
6	93109-20069	.OIL SEAL	2				
7	JN6-G6280-00	SECONDARY SPRING SEAT COMP.	1				
8	JN6-E7688-00	.SHOE, RAMP	3				
9	90110-04834	.BOLT, HEXAGON SOCKET HEAD	3				
10	90508-45849	SPRING, TORSION	1				
11	90280-05022	KEY, WOODRUFF	1				
12	90202-20130	WASHER, PLATE	1				
13	90201-128S5	WASHER, PLATE	1				
14	95607-12200	NUT, SELF-LOCKING	1				

FIG. 23 TRANSMISSION 1

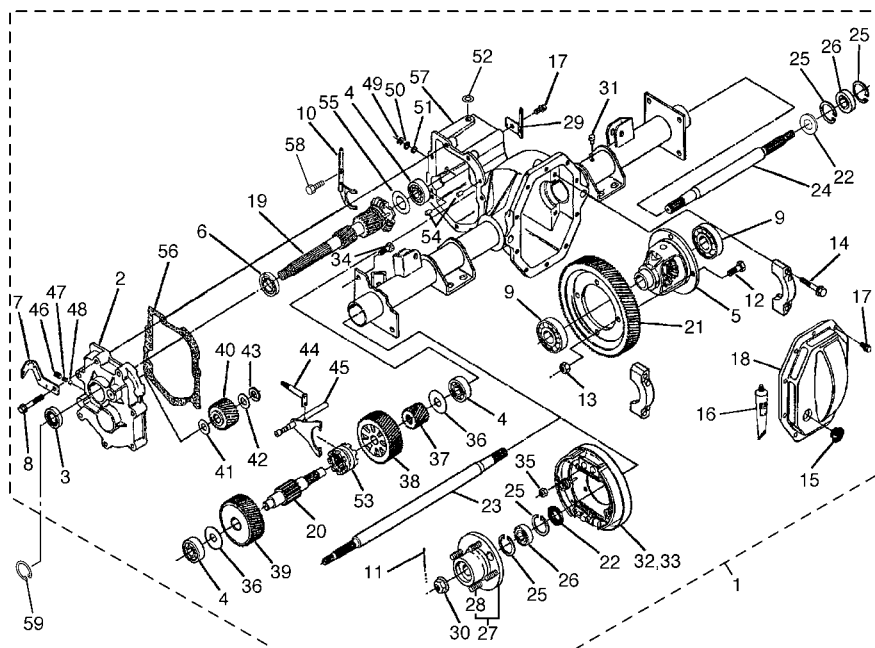
REF. NO.	PART NO.	DESCRIPTION	JU51				REMARKS
1	JR6-G6300-02	TRANS AXLE ASSY	1				
2	JN3-G6313-00	.COVER, TRNMISSION	1				
3	93102-25868	.OIL SEAL	1				
4	93306-303Y6	.BEARING	3				
5	JN6-G6410-00	.DIFFERENTIAL ASSY.	1				
6	93306-005Y4	.BEARING	1				
7	JN6-G6555-00	.BRACKET 2	1				
8	90105-08859	.BOLT, FLANGE	7				
9	93306-007Y0	.BEARING	2				
10	JN3-G633E-01	.BAR 1	1				
11	90252-36801	.PIN, COTTER	2				
12	90101-10854	.BOLT	4				
13	90170-10840	.NUT	4				
14	90105-10840	.BOLT, FLANGE	4				
15	JN3-G6432-00	.STOPPER	1				
16	JH7-G6136-00	.SEAL 1	1				
17	90101-08856	.BOLT	11				
18	JN3-G6314-00	.COVER, TRANSMISSION	1				
19	JR6-G6320-01	.INPUT SHAFT ASSY	1				
20	JN3-G633G-00	.SHAFT	1				
21	JN3-G6355-00	.GEAR, PRIMARY	1				
22	93101-31836	.OIL SEAL	2				
23	JR3-G6511-00	.SHAFT, REAR AXLE 1 (L.H)	1				
24	JR3-G6512-00	.SHAFT, REAR AXLE 2 (R.H)	1				
25	93420-52806	.CIRCLIP	4				
26	93306-205X2	.BEARING	2				
27	JR3-G6514-00	.HUB, REAR AXLE	2				



JU51110-C230

FIG. 23 TRANSMISSION 1

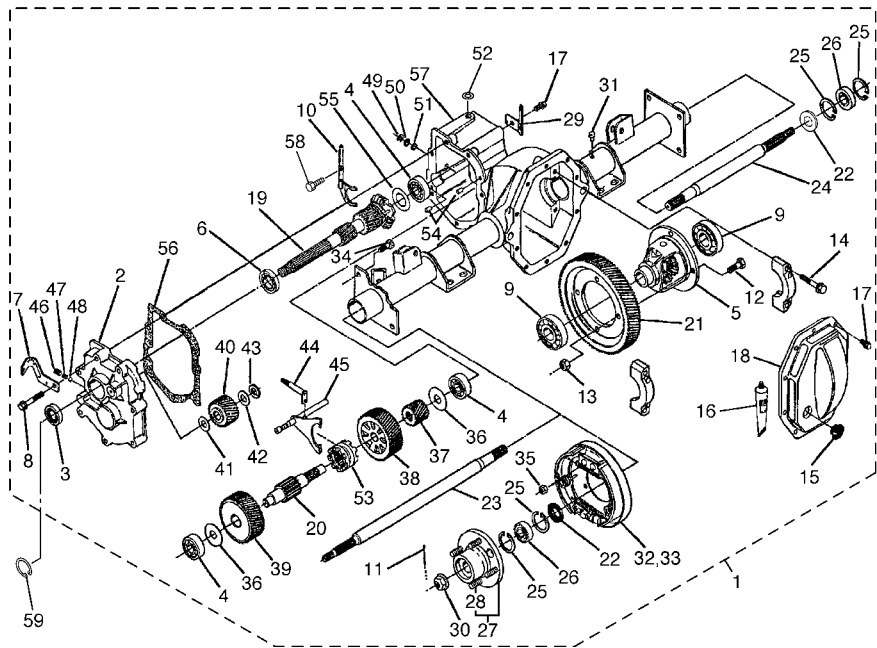
REF. NO.	PART NO.	DESCRIPTION	JU51				REMARKS
28	90114-10804	.BOLT, SERRATION	4				
29	JN3-G6556-00	.BRACKET 3	1				
30	90185-19842	.NUT, SELF-LOCKING	2				
31	JH7-G5619-00	.CAP	1				
32	JN6-F7290-03	.BACKING PLATE ASSY 2	1				SEE FIG.17 (L.H)
33	JN6-F7280-03	.BACKING PLATE ASSY 1	1				SEE FIG.18 (R.H)
34	90101-08855	.BOLT	8				
35	90170-08841	.NUT	8				
36	90201-178H8	.WASHER, PLATE	2				
37	JN3-G6316-00	.GEAR, PINION 1	1				
38	JR6-G6326-00	.GEAR, WHEEL 1	1				
39	JN3-G6327-00	.GEAR, WHEEL 2	1				
40	JN3-G6356-00	.GEAR, IDLER	1				
41	90201-208H9	.WASHER, PLATE	1				
42	90201-208J0	.WASHER, PLATE	1				
43	93440-20813	.CIRCLIP	1				
44	JN3-G638A-00	.BAR, SHIFT 1	1				
45	JN6-G638E-00	.BAR, SHIFT 2	1				
46	90113-08803	.BOLT, SET	1				
47	90501-10852	.SPRING, COMPRESSION	1				
48	93500-06826	.BALL	1				
49	93410-12822	.CIRCLIP	1				
50	90202-12807	.WASHER, PLATE	1				
51	93104-11829	.OIL SEAL	1				
52	93109-10820	.O-RING	1				
53	JN3-G6153-00	.COLLAR, GUIDE	1				
54	93606-10842	.PIN, DOWEL	2				



JU51110-C230

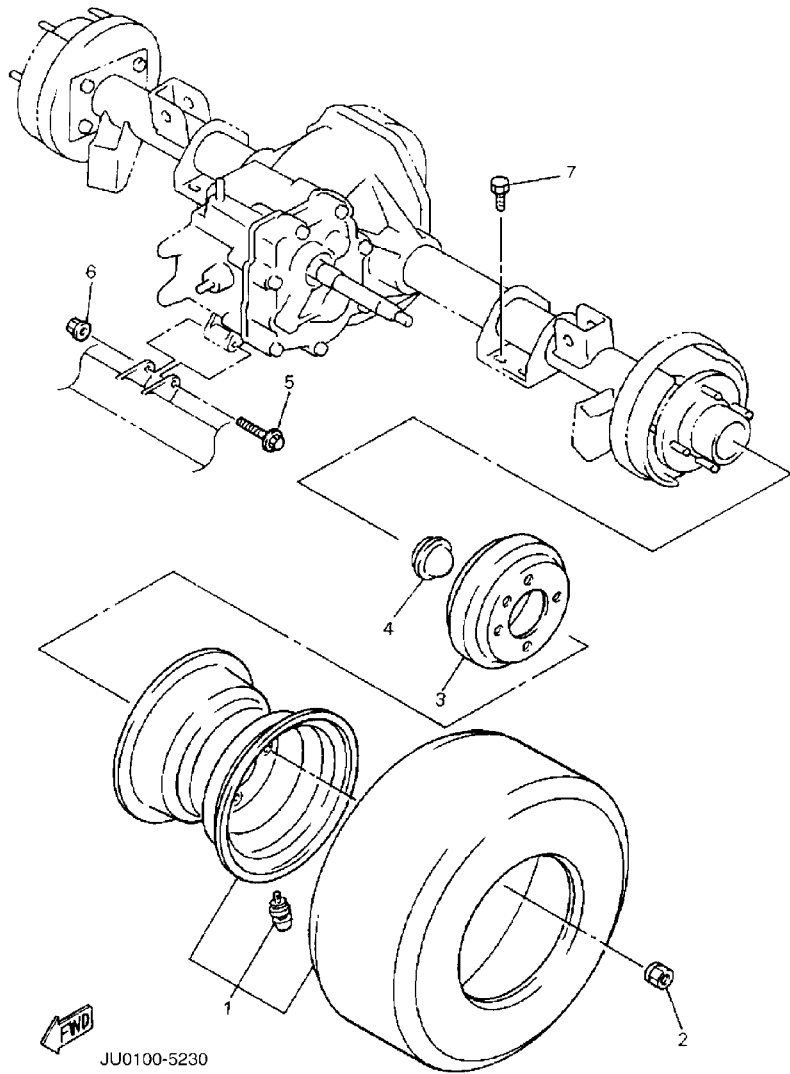
FIG. 23 TRANSMISSION 1

REF. NO.	PART NO.	DESCRIPTION	JU51				REMARKS
55	JN3-G6344-00	.SHIM, 0.76MM (0.030IN)	1				UR
	JN3-G6344-10	.SHIM, 0.90MM (0.035IN)	1				UR
	JN3-G6344-20	.SHIM, 1.00MM (0.040IN)	1				UR
	JN3-G6344-30	.SHIM, 1.14MM (0.045IN)	1				UR
	JN3-G6344-40	.SHIM, 1.27MM (0.050IN)	1				UR
	JN3-G6344-50	.SHIM, 1.39MM (0.055IN)	1				UR
	JN3-G6344-60	.SHIM, 1.52MM (0.060IN)	1				UR
	JN3-G6344-70	.SHIM, 1.65MM (0.065IN)	1				UR
	JN3-G6344-80	.SHIM, 0.38MM (0.015IN)	1				UR
	JN3-G6344-90	.SHIM, 1.78MM (0.070IN)	1				UR
	JN3-G6344-A0	.SHIM, 1.92MM (0.075IN)	1				UR
	JN3-G6344-B0	.SHIM, 2.03MM (0.080IN)	1				UR
	JN3-G6344-C0	.SHIM, 2.12MM (0.085IN)	1				UR
	JN3-G6344-D0	.SHIM, 2.29MM (0.090IN)	1				UR
56	JN3-G6319-00	.GASKET	1				
57	JR3-G6290-02	.CASEASSY	1				
58	JN3-G6249-00	.BOLT	1				
59	93410-25017	CIRCLIP	1				

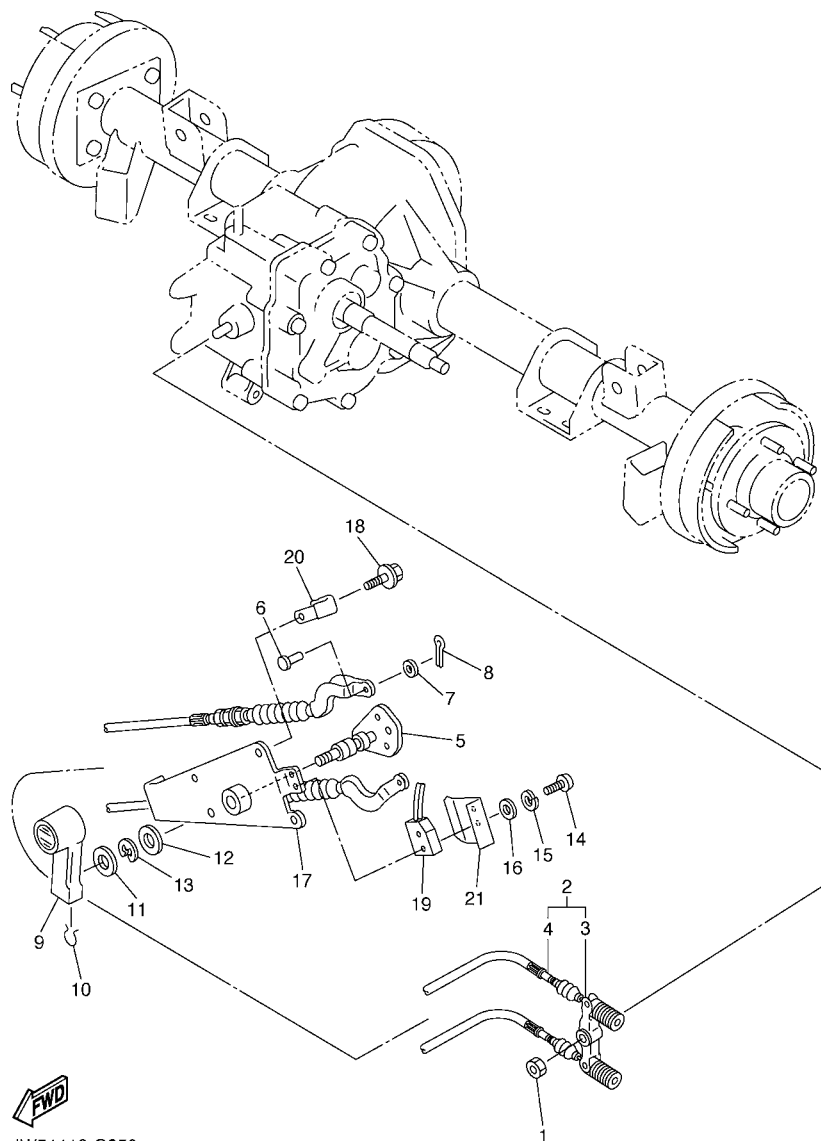


JU51110-C230

FIG. 24 REAR AXLE MOUNT & WHEEL



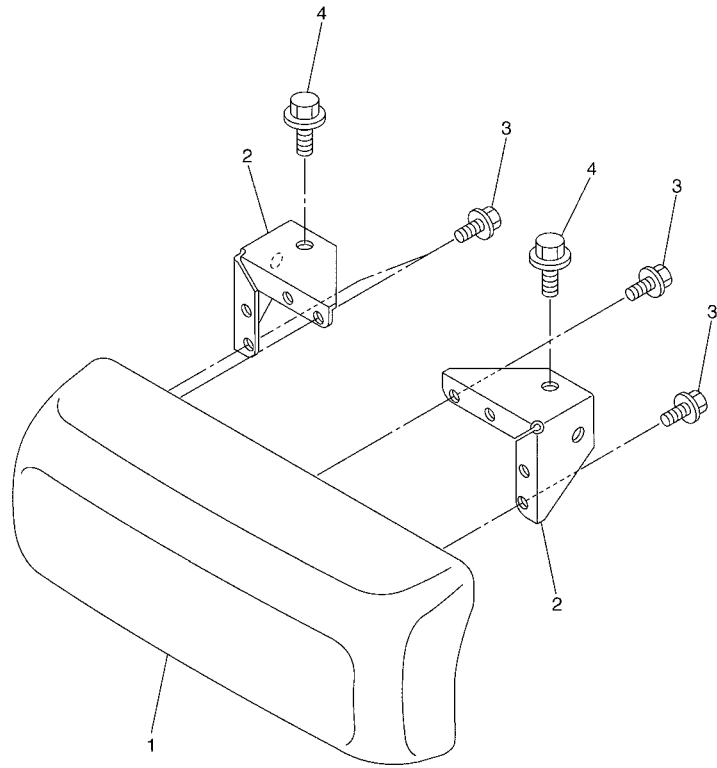
REF. NO.	PART NO.	DESCRIPTION	JU61				REMARKS
1	JR6-F5300-10	WHEEL ASSY (18X8.50-8 6PLY)	2				
2	90179-12262	NUT	8				
3	J55-G6521-10	DRUM	2				
4	JN6-F5118-00	COVER, HUB DUST	2				
5	9581P-08075	BOLT, FLANGE	1				
6	95707-08500	NUT, FLANGE	1				
7	9751P-10620	BOLT, WITH WASHER	8				



JW51110-C250

FIG. 25 SHIFTER & CABLES

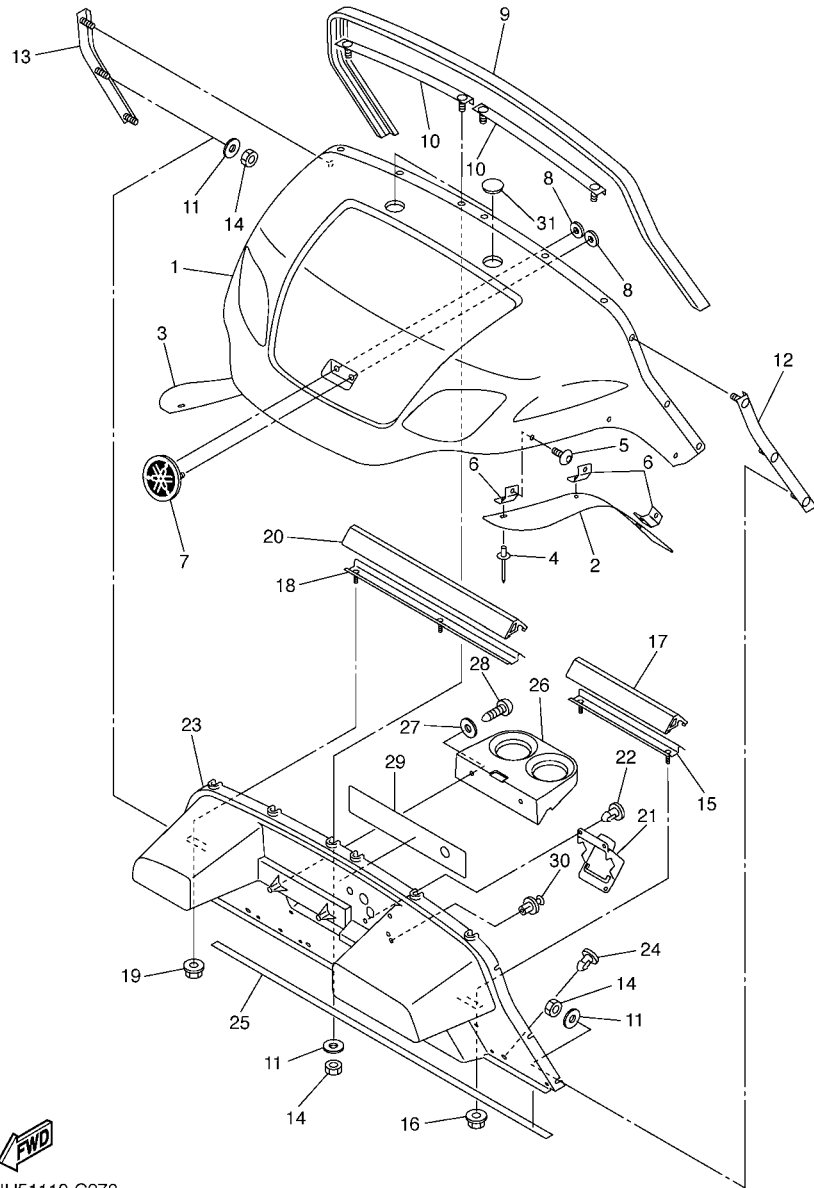
REF. NO.	PART NO.	DESCRIPTION	JU51				REMARKS
1	95607-08100	NUT, U	1				
2	JJ3-G8330-01	CABLE END ASSY	1				
3	J55-G6383-00	.LEVER, SHIFT 2	1				
4	JJ3-G6371-01	.WIRE, SHIFT	2				
5	JF2-46382-00	LEVER, SHIFT 1	1				
6	91701-06014	PIN, CLEVIS	2				
7	9290P-06600	WASHER	2				
8	91401-20012	PIN, COTTER	2				
9	JN3-G6381-00	KNOB, SHIFT	1				
10	JN3-G6376-00	SPRING SET	1				
11	90201-208S8	WASHER, PLATE	1				
12	90201-198S7	WASHER, PLATE	1				
13	99009-19400	CIRCLIP	1				
14	98507-04025	SCREW, PAN HEAD	2				
15	92907-04100	WASHER, SPRING	2				
16	92907-04600	WASHER	2				
17	JN3-G6372-00	BRACKET, SHIFT WIRE	1				
18	90105-06876	BOLT, FLANGE	4				
19	JN3-82617-01	SWITCH	1				
20	90465-06038	CLAMP	1				
21	JJ3-G6394-00	JOINT	1				



JU51110-C260

FIG. 26 BUMPER

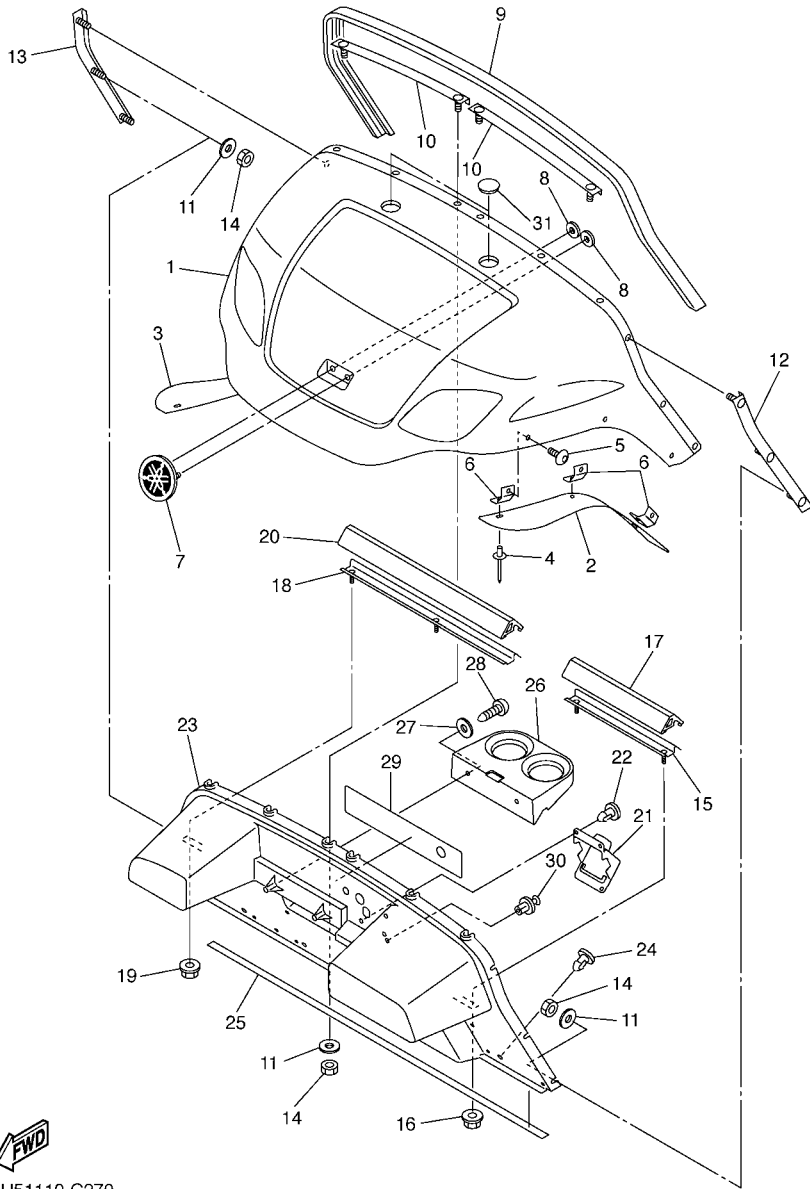
REF. NO.	PART NO.	DESCRIPTION	JU51				REMARKS
1	JN3-K7510-02	FRONT BUMPER COMP.	1				
2	JN8-K8164-00	STAY, FRONT BUMPER (L.H)	2				
3	90105-06876	BOLT, FLANGE	4				
4	9581P-08016	BOLT, FLANGE	2				
<hr style="border-top: 1px dashed black;"/>							
<hr style="border-top: 1px dashed black;"/>							
<hr style="border-top: 1px dashed black;"/>							
<hr style="border-top: 1px dashed black;"/>							
<hr style="border-top: 1px dashed black;"/>							
<hr style="border-top: 1px dashed black;"/>							
<hr style="border-top: 1px dashed black;"/>							
<hr style="border-top: 1px dashed black;"/>							



JU51110-C270

FIG. 27 BODY

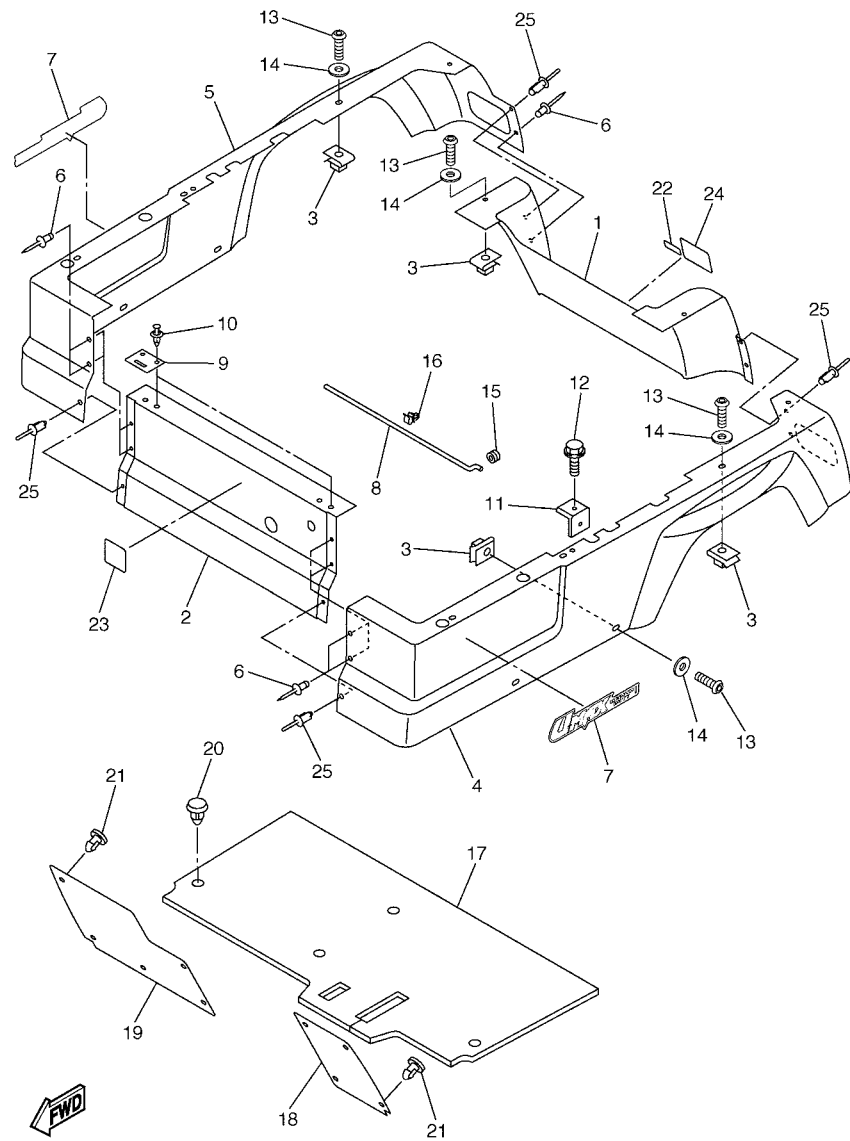
REF. NO.	PART NO.	DESCRIPTION	JU51				REMARKS
1	JU6-K811A-00	TRIM, UPPER COWL	1				
2	JR6-F1551-00	FENDER, OVER	1				
3	JR6-F1555-00	FENDER, OVER 2	1				
4	90267-48831	RIVET, BLIND	6				
5	90110-06836	BOLT, HEXAGON SOCKET HEAD	6				
6	JR6-F1546-00	STAY, FENDER 3	6				
7	JU0-F4161-00	EMBLEM 1	1				
8	JU0-K7573-00	NUT, SPECIAL	2				
9	JF2-K811V-00	PROTECTOR 1	1				
10	JU0-K8261-00	PLATE, BODY PROTECT 1	2				
11	90201-06829	WASHER, PLATE	10				
12	JF2-K8262-01	PLATE, BODY PROTECT 2	1				
13	JF2-K8263-01	PLATE, BODY PRTOTECT 3	1				
14	90185-06836	NUT, SELF-LOCKING	10				
15	JF2-K8264-00	PLATE, BODY PROTECT 4	1				
16	9560P-06200	NUT, FLANGE	2				
17	JF2-K811W-00	PROTECTOR 2	1				
18	JF2-K8265-00	PLATE, BODY PROTECT 5	1				
19	9560P-06200	NUT, FLANGE	2				
20	JF2-K811X-00	PROTECTOR 3	1				
21	JF2-78273-01	COVER, HOLE	1				
22	90269-11042	RIVET	3				
23	JU7-K8114-00	PANEL, FRONT	1				
24	90269-08066	RIVET	3				
25	JN3-K815G-00	SEAL, FRONT STORAGE	1				
26	JF2-K835E-00	HOLDER, BEVERAGE	1				
27	90201-068R6	WASHER, PLATE	2				



JU51110-C270

FIG. 27 BODY

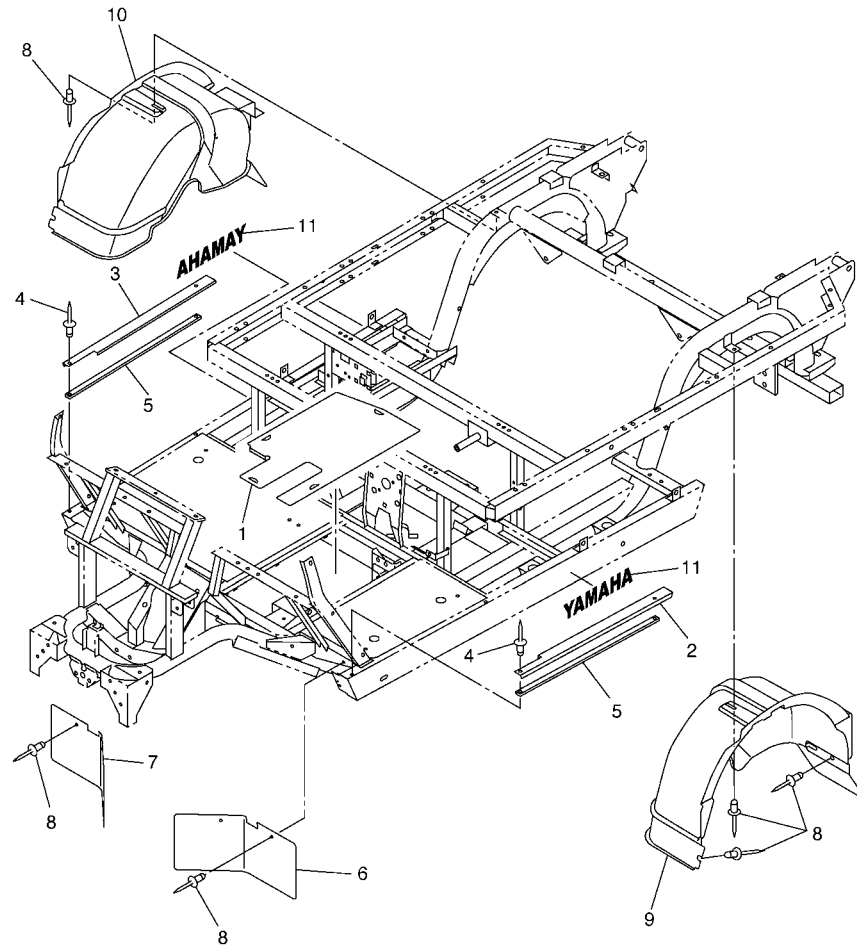
REF. NO.	PART NO.	DESCRIPTION	JU51		REMARKS
28	9770P-60130	SCREW, TAPPING	2		
29	JU5-K7761-00	LABEL, WARNING 1	1		
30	90269-08069	RIVET	2		
31	JN3-K818E-00	CAP, PROTECTOR END 1	2		



JU51110-C280

FIG. 28 BODY 2

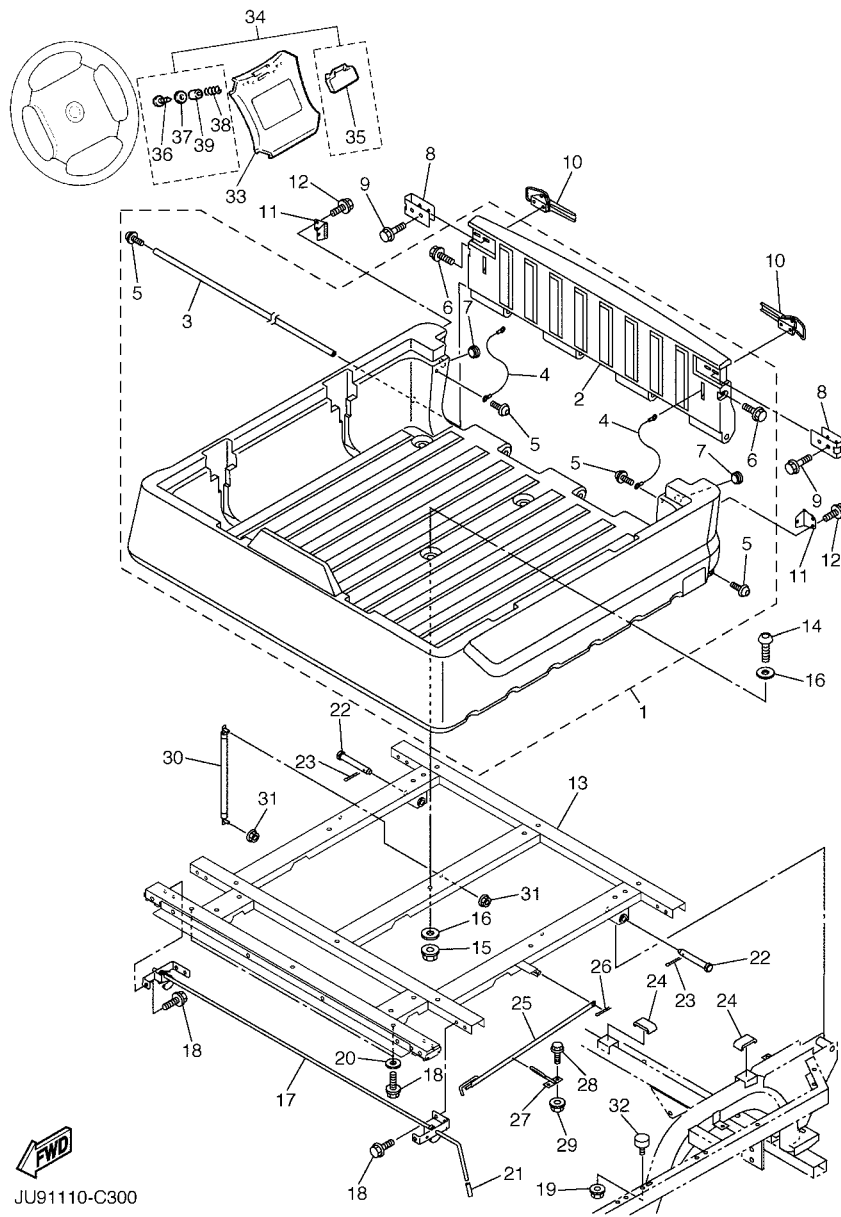
REF. NO.	PART NO.	DESCRIPTION	JU51				REMARKS
1	JU9-K8142-00	PANEL, REAR BODY	1				
2	JU9-K8141-00	PANEL, INTERMEDIATE BODY	1				
3	90183-06811	NUT, SPRING	14				
4	JU9-K8111-00	PANEL, BODY SHELL	1				
5	JU9-K8112-00	PANEL, BODY SHELL	1				
6	90267-36853	RIVET, BLIND	6				
7	JU5-F1781-00	EMBLEM 1	2				
8	JJ3-K8226-00	ROD, SEAT STOPPER	1				
9	JJ3-K8427-01	HINGE, SEAT 2	2				
10	90267-64834	RIVET, BLIND	4				
11	JJ3-K814H-00	HOOK, BODY LOCK	2				
12	90119-08800	BOLT, WITH WASHER	2				
13	90110-06836	BOLT, HEXAGON SOCKET HEAD	14				
14	90201-068R6	WASHER, PLATE	14				
15	90480-13018	GROMMET	1				
16	90464-10814	CLAMP	1				
17	JN6-K8233-01	MAT, MAIN FLOOR 3	1				
18	JN6-K8231-01	MAT, MAIN FLOOR 1	1				
19	JN6-K8232-01	MAT, MAIN FLOOR 2	1				
20	90269-08813	RIVET	4				
21	90267-63047	RIVET, BLIND	9				
22	JJ3-K7765-00	LABEL, WARNING 5	1				
23	JN3-K7741-00	INDICATOR 1	1				
24	JU5-K7768-00	LABEL, WARNING	1				
25	90267-62841	RIVET, BLIND	4				



JW51110-C290

FIG. 29 BODY FITTING

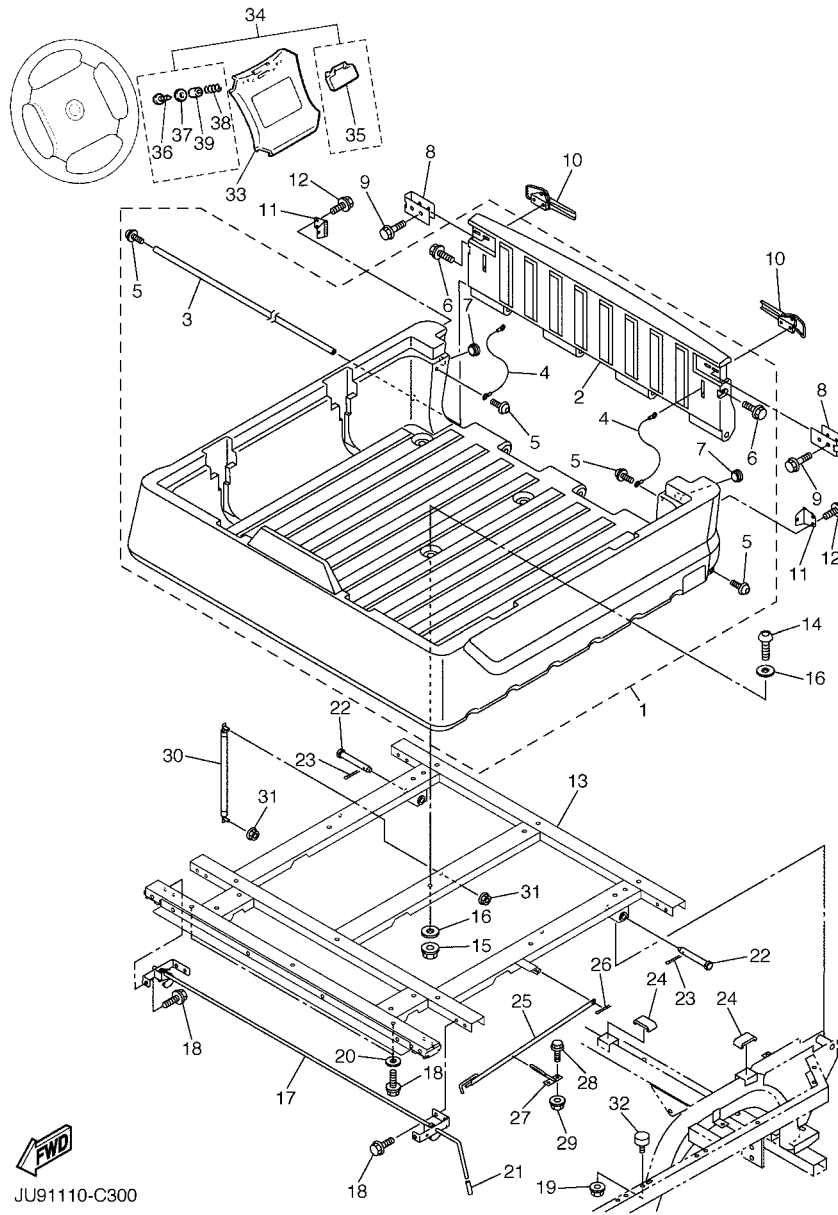
REF. NO.	PART NO.	DESCRIPTION	JU51				REMARKS
1	JN6-K8271-00	SERVICE LID, PEDAL	1				
2	JF2-K8215-10	PLATE, SIDE TRIM	1				
3	JF2-K821F-10	PLATE, SIDE TRIM	1				
4	90267-48154	RIVET, BLIND	4				
5	JJ3-K8124-00	REINFORCEMENT 4	2				
6	JF2-K8187-00	FLAP, FRONT FENDER (L.H)	1				
7	JF2-K8189-00	FLAP, FRONT FENDER (R.H)	1				
8	90267-48831	RIVET, BLIND	10				
9	JJ3-K8191-00	PANEL, REAR FENDER 1	1				
10	JJ3-K8192-00	PANEL, REAR FENDER 2	1				
11	JW5-F153A-00	EMBLEM, YAMAHA	2				



JU91110-C300

FIG. 30 CARRIER

REF. NO.	PART NO.	DESCRIPTION	JU51			REMARKS
1	JU5-K810M-00	REAR STORAGE BOX COMP.	1			
2	JU9-K819K-00	.SHELL, RR. STORAGE LID	1			
3	JU9-K8564-00	.PIN, HINGE	1			
4	JU9-K7195-00	.HOLDER, CABLE	2			
5	JU9-K6179-00	.BOLT, SPECIAL 1	4			
6	JU9-K6189-00	.BOLT, SPECIAL 2	2			
7	JU9-K7739-10	.DAMPER, LID	2			
8	JU9-K7171-00	BODY, LATCH 1	2			
9	JU9-K8384-00	BOLT	4			
10	5UG-F389E-00	LATCH	2			
11	JU9-K7172-00	BODY, LATCH 2	2			
12	90119-06830	BOLT, WITH WASHER	6			
13	JU9-K818N-00	BED, BOX	1			
14	92017-10035	BOLT, BUTTON HEAD	7			
15	9560P-10200	NUT, FLANGE	7			
16	90201-10144	WASHER, PLATE	12			
17	JU9-K8380-01	LOCK ASSY	1			
18	9582P-08020	BOLT, FLANGE	8			
19	9560P-08200	NUT	2			
20	90201-088P7	WASHER, PLATE	2			
21	JJ3-K818M-00	CAP, PROTECTOR END 4	1			
22	90240-13801	PIN, CLEVIS	2			
23	91401-30025	PIN, SPLIT	2			
24	JJ3-K815H-01	DAMPER, LOCK	3			
25	JU5-K8158-00	ROD, INSPECTION LID	1			
26	91401-20020	PIN, COTTER	1			
27	JJ3-K8369-00	PIN, LEVER	1			



JU91110-C300

FIG. 30 CARRIER

REF. NO.	PART NO.	DESCRIPTION	JU51				REMARKS
28	90119-06830	BOLT, WITH WASHER	2				
29	9560P-06200	NUT, FLANGE	2				
30	JJ3-K7588-00	DAMPER	1				
31	9560P-08200	NUT	2				
32	JU5-K8167-00	BUMPER, RUBBER 1	2				
33	JN3-K8357-00	HOLDER 1	1				
34	JN6-W001D-00	SCORE CARD HOLDER KIT	1				
35	JN6-K8358-01	.HOLDER 2	1				
36	97707-40525	.SCREW, TAPPING	2				
37	90201-048R5	.WASHER, PLATE	2				
38	90502-10013	.SPRING, CONICAL	2				
39	90387-046N7	.COLLAR	2				

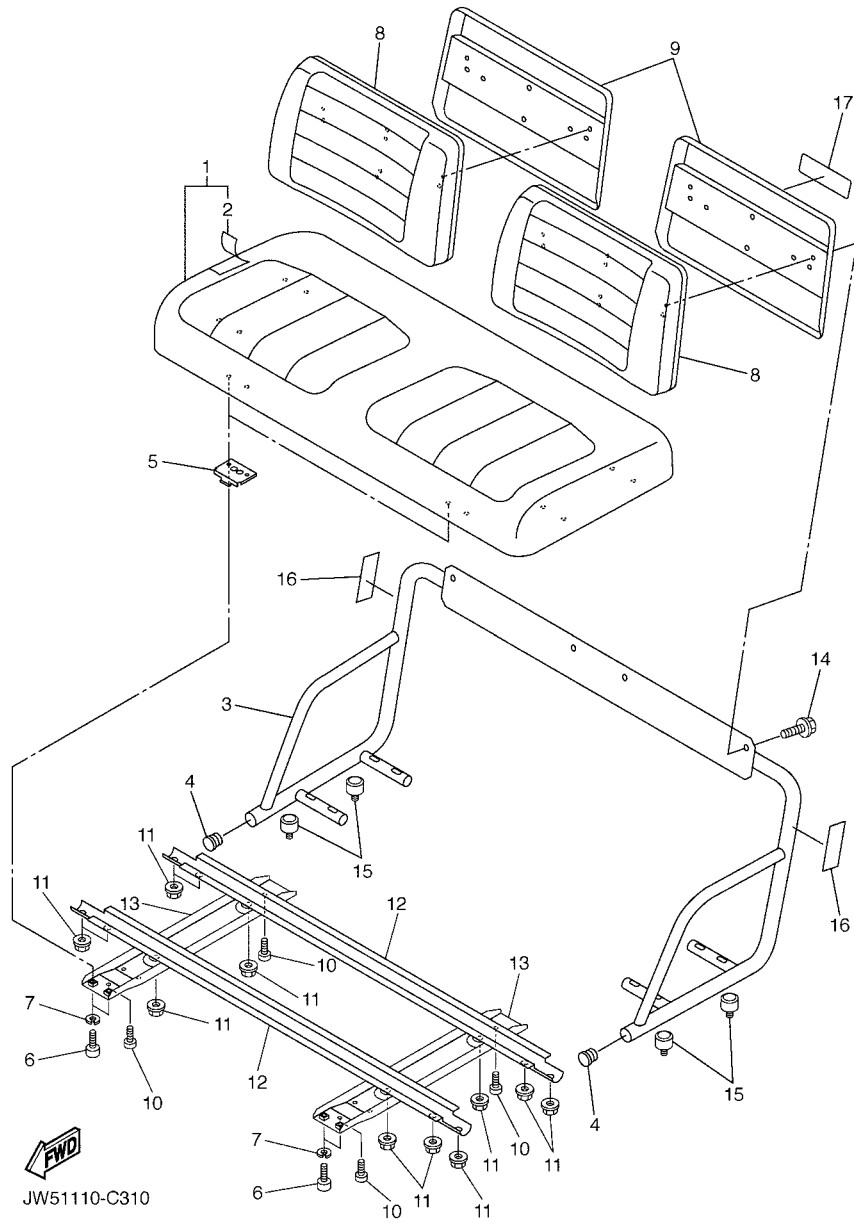
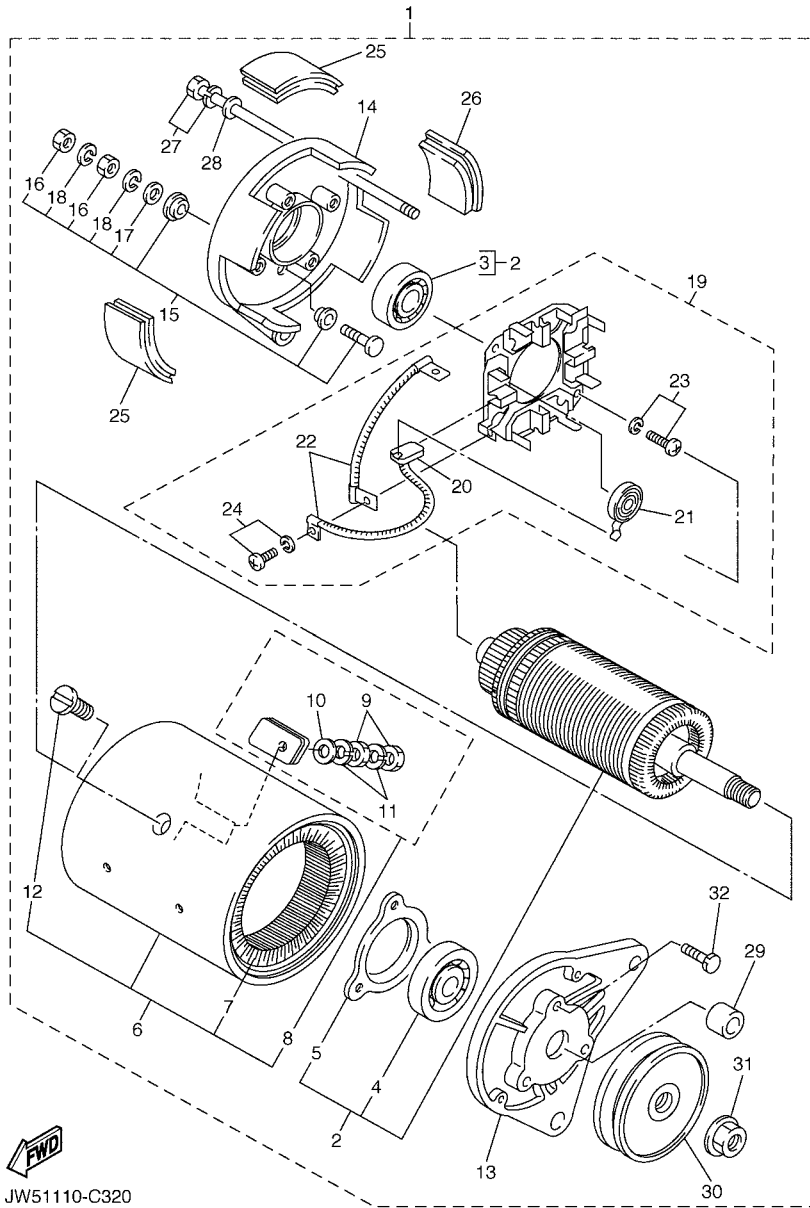


FIG. 31 SEAT

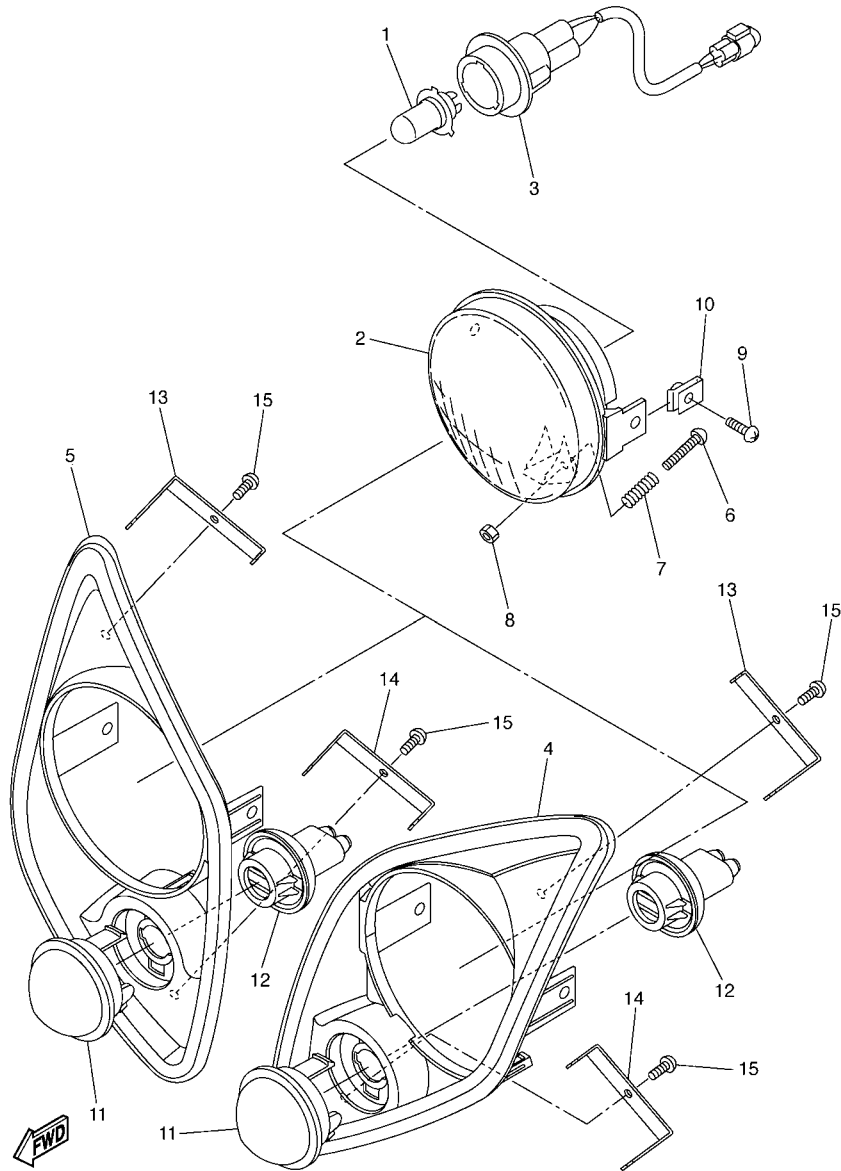
REF. NO.	PART NO.	DESCRIPTION	JU51				REMARKS
1	JU9-K8401-00	SEAT SUB-ASSY,CUSHION	1				
2	JU9-K8404-00	.COVER,SEAT	1				
3	JU9-K8420-00	SEAT ASSY 2	1				
4	JU7-F111A-00	CAP, MAIN PIPE	2				
5	JN3-K8426-01	HINGE, SEAT 1	2				
6	90111-06810	BOLT	4				
7	90204-06807	WASHER, SPRING	4				
8	JU7-K8402-00	SEAT SUB ASSY, BACK	2				
9	JJ3-K8413-10	COVER, SEAT BACK	2				
10	90167-04815	SCREW, TAPPING	4				
11	9560P-08200	NUT	12				
12	JN6-K8121-00	REINFORCEMENT 1	2				
13	JN6-K8122-02	REINFORCEMENT 2	2				
14	90119-06837	BOLT, WITH WASHER	4				
15	JU5-K8167-00	BUMPER, RUBBER 1	4				
16	5UG-K7764-00	LABEL, WARNING 4	2				
17	JU7-K7767-00	LABEL, WARNING 7	1				



JW51110-C320

FIG. 32 STARTING MOTOR

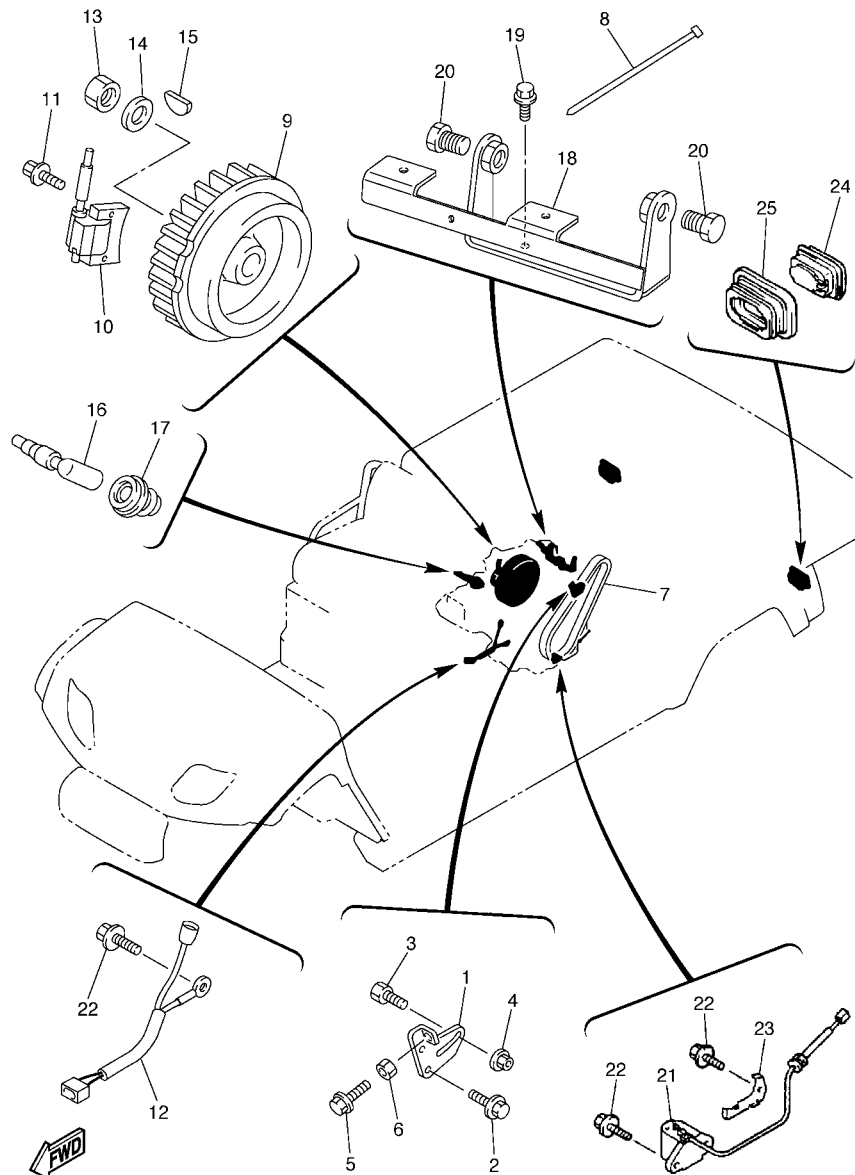
REF. NO.	PART NO.	DESCRIPTION	JU51				REMARKS
1	JN6-H1100-02	STARTER GENERATOR ASSY	1				
2	JN3-H1150-00	.ARMATURE ASSY	1				
3	J10-H1157-10	..BEARING 1 (6202 SD)	1				
4	J10-H1158-10	..BEARING 2 (6203 SD)	1				
5	J10-H1159-10	..HOLDER, BEARING	1				
6	JN6-H1110-10	..STATOR ASSY	1				
7	JN6-H1160-10	..FIELD COIL ASSY	1				
8	J10-81148-10	..SCREW SET 4	2				
9	9530N-06600	...NUT	2				
10	9290N-06600	...WASHER	1				
11	9290N-06100	...WASHER, SPRING	2				
12	J10-81146-10	..SCREW 2	4				
13	J38-H1165-10	.BRACKET, STARTER GENERATOR 1	1				
14	J10-H1166-10	.BRACKET, STARTER GENERATOR 2	1				
15	J10-H1147-10	.SCREW 3	2				
16	9530N-06600	..NUT	2				
17	9290N-06600	..WASHER	1				
18	9290N-06100	..WASHER, SPRING	2				
19	JN6-H1119-00	.BRUSH HOLDER ASSY	1				
20	JF2-H1111-00	..BRUSH	4				
21	JN6-H1113-00	..SPRING, BRUSH	4				
22	J10-H1115-10	..WIRE, LEAD	2				
23	9850N-05016	..SCREW, PAN HEAD	2				
24	9850N-04010	..SCREW, PAN HEAD	4				
25	J10-H1129-10	.COVER, BRUSH	3				
26	J10-H1139-10	.COVER, BRUSH 2	1				
27	J10-81145-10	.SCREW 1	2				



JU71110-C330

FIG. 33 HEADLIGHT

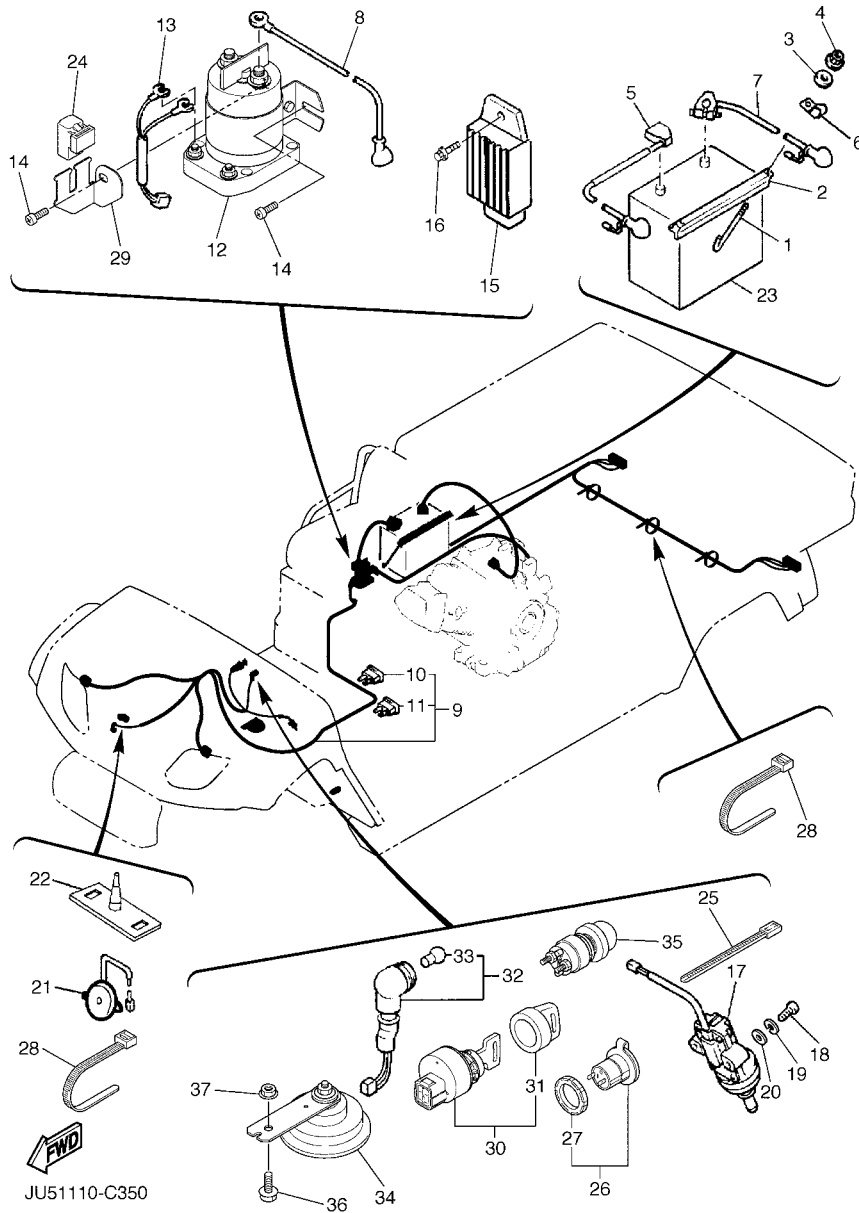
REF. NO.	PART NO.	DESCRIPTION	JU61				REMARKS
1	5FU-H4314-00	BULB, HEADLIGHT (12V-30/30W)	2				
2	5FU-H4320-00	LENS ASSY	2				
3	5FU-H4340-00	SOCKET CORD ASSY 1	2				
4	JU7-H411T-00	HOLDER, 1	1				LH
5	JU7-H411U-00	HOLDER, 2	1				RH
6	98507-03540	SCREW, PAN HEAD	2				
7	90501-10060	SPRING, COMPRESSION	2				
8	2GU-84334-00	NUT, ADJUSTING	2				
9	90150-05802	SCREW, ROUND HEAD	4				
10	90183-05008	NUT, SPRING	4				
11	JU7-H5415-00	MARK, SIGNAL LAMP	2				
12	JU7-H3547-00	COVER, SOCKET	2				
13	JU7-H4118-00	STAY, HEADLIGHT 1	2				
14	JU7-H4119-00	STAY, HEADLIGHT 2	2				
15	97707-40112	SCREW, TAPPING	4				



JU51110-C340

FIG. 34 ELECTRICAL 1

REF. NO.	PART NO.	DESCRIPTION	JU51				REMARKS
1	JN6-H1170-00	TENSIONER ASSY	1				
2	9582P-08020	BOLT, FLANGE	2				
3	90109-08875	BOLT	1				
4	95707-08500	NUT, FLANGE	1				
5	90101-06478	BOLT	1				
6	95307-06600	NUT	1				
7	JN6-H1173-00	BELT	1				
8	90464-09823	CLAMP	1				
9	JR7-85650-00	ROTOR ASSY	1				
10	JN6-85640-01	T.C.I. UNIT ASSY	1				
11	95827-06025	BOLT, FLANGE	2				
12	JN6-82318-00	WIRE, SUB-LEAD	1				
13	95307-18600	NUT	1				
14	90201-18620	WASHER, PLATE	1				
15	90280-04052	KEY, WOODRUFF	1				
16	JN6-82370-00	PLUG CAP ASSY	1				
17	JE8-82372-00	SEAL, PLUG CAP	1				
18	JN6-H1171-00	BRACKET, STARTER GENERATOR	1				
19	9582P-08020	BOLT, FLANGE	2				
20	9581P-12025	BOLT, FLANGE	2				
21	JN6-85720-12	OIL LEVEL GAUGE ASSY	1				
22	95827-06012	BOLT, FLANGE	4				
23	JN6-85724-00	CLAMP	1				
24	JN3-H4700-00	TAILLIGHT ASSY	2				
25	JN3-H4718-00	GROMMET	2				



JU51110-C350

FIG. 35 ELECTRICAL 2

REF. NO.	PART NO.	DESCRIPTION	JU51				REMARKS
1	JN3-H2133-00	SCREW, FITTING	2				
2	J55-H2136-00	PLATE, BATTERY FITTING	1				
3	9290P-06200	WASHER	2				
4	95707-06500	NUT, FLANGE	2				
5	JU9-H2115-00	WIRE, PLUS LEAD	1				
6	90461-08031	CLAMP	2				
7	JR3-H2116-00	WIRE, MINUS LEAD	1				
8	JR3-H2117-00	WIRE, LEAD	1				
9	JU9-H2590-00	WIRE HARNESS ASSY	1				
10	JN6-H2151-00	.FUSE (10 A)	2				
11	JU7-H2151-00	.FUSE (20 A)	1				
12	JR3-H1950-00	RELAY ASSY	1				
13	JN6-H2105-00	WIRE HARNESS	1				
14	90163-06005	SCREW, TAPPING	2				
15	JF2-81910-01	VOLTAGE REGULATOR ASSY	1				
16	90105-06876	BOLT, FLANGE	1				
17	JF7-82817-20	SWITCH	1				
18	98507-05025	SCREW, PAN HEAD	2				
19	92907-05100	WASHER, SPRING	2				
20	92907-05600	WASHER, PLATE	2				
21	JR1-H3383-01	BUZZER	1				
22	JN6-H3386-01	STAY, BUZZER	1				
23	JG5-H2110-01	BATTERY ASSY (GC-24, 12V)	1				
24	4U8-81950-02	RELAY ASSY	1				
25	90464-40825	CLAMP	5				
26	5FU-H1920-10	TERMINAL ASSY	1				
27	5FU-H191B-10	.NUT	1				

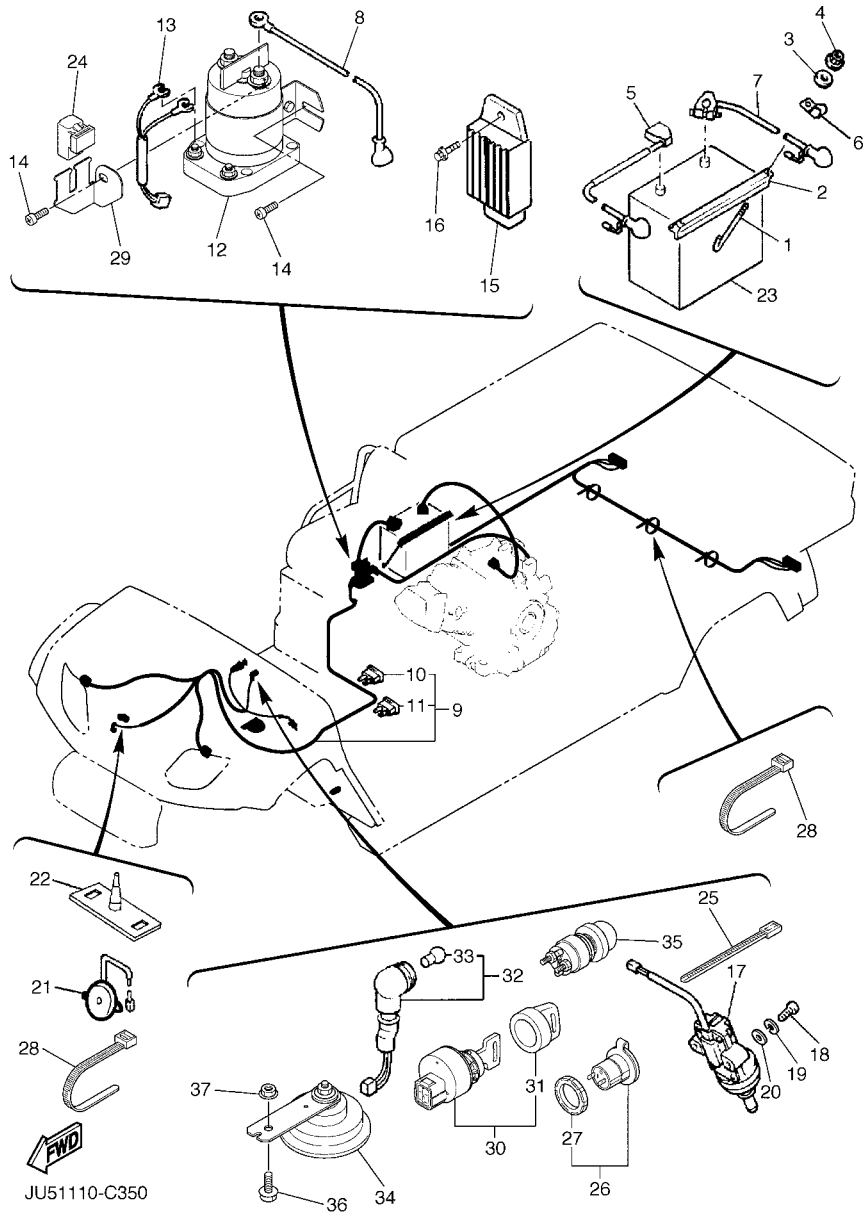


FIG. 35 ELECTRICAL 2

REF. NO.	PART NO.	DESCRIPTION	JU51				REMARKS
28	90464-14806	CLAMP	5				
29	JU7-F253B-00	STAY, RELAY	1				
30	JU7-H2510-00	MAIN SWITCH ASSY	1				
31	5UG-H2579-00	.CAP, KEY	1				
32	JN6-83530-00	PILOT LIGHT ASSY	1				
33	123-83516-21	.BULB (12V-3.4W)	1				
34	4LR-83371-10	HORN	1				
35	JR6-H270X-00	SWITCH	1				
36	9582P-06016	BOLT, FLANGE	1				
37	95707-06500	NUT, FLANGE	1				

NUMERICAL INDEX

PART NO.	REF. NO.	PART NO.	REF. NO.	PART NO.	REF. NO.	PART NO.	REF. NO.	PART NO.	REF. NO.	PART NO.	REF. NO.
JT0-11111-00	2 - 1	7E1-14191-00	7 - 22	J17-27231-03	16 - 19	JR6-F1551-00	27 - 2	JN6-F5118-00	13 - 28	JN6-G6271-02	22 - 3
JN6-11116-00	2 - 9	1KT-14197-01	7 - 25	J17-27232-00	16 - 20	JR6-F1555-00	27 - 3		24 - 4	JN6-G6280-00	22 - 7
JN6-11133-10	2 - 2	127-14198-00	7 - 14	J17-27246-00	16 - 35	JU5-F1781-00	28 - 7	JR6-F5300-10	24 - 1	JR3-G6290-02	23 - 57
JR7-11163-00	2 - 16	7NJ-14211-00	7 - 6	J46-27250-03	16 - 1	JN6-F2110-02	11 - 1	JN6-F5331-01	17 - 2	JU0-G6297-00	21 - 16
JN6-11168-00	2 - 10	73A-14212-00	7 - 23	J17-27853-01	19 - 2	JN6-F2123-10	11 - 2	JN6-F5341-01	18 - 2	JR6-G6300-02	23 - 1
JN6-11169-00	2 - 11	73A-14212-10	7 - 7	J10-27871-01	19 - 6	JN6-F2124-10	11 - 7	JN6-F5685-00	16 - 39	JN3-G6313-00	23 - 2
JT0-11181-00	2 - 3		7 - 19	J38-27872-00	19 - 3	JN6-F2128-01	11 - 14	JJ3-F6311-00	19 - 14	JN3-G6314-00	23 - 18
JN6-11191-01	2 - 8	J10-14227-00	7 - 5	J38-27951-00	20 - 1	JN6-F217G-00	11 - 6	JN6-F6312-01	6 - 18	JN3-G6316-00	23 - 37
JN6-11193-00	2 - 12	3G2-1423A-67	7 - 11	J38-27959-00	20 - 5	JR6-F2210-00	11 - 11	J55-F6331-11	6 - 19	JN3-G6319-00	23 - 56
812-11198-00	9 - 10	3G2-1423A-68-A0	7 - 11	JF2-46382-00	25 - 5	JU5-F2501-01	12 - 1	JN6-F6333-10	6 - 20	JR6-G6320-01	23 - 19
JN6-11400-00	3 - 1	3G2-1423E-33-A0	7 - 11	JF2-78273-01	27 - 21	JU7-F253B-00	35 - 29	JJ3-F6341-01	16 - 47	JR6-G6326-00	23 - 38
JN6-11454-00	3 - 8	JN6-14291-00	7 - 4	J10-81145-10	32 - 27	JU0-F2567-00	12 - 2	JJ3-F6351-02	16 - 48	JN3-G6327-00	23 - 39
JR7-11610-00	3 - 3	7KY-14613-01	8 - 2	J10-81146-10	32 - 12	JR6-F3350-00	13 - 18	JR6-F6361-00	16 - 56	JN3-G633E-01	23 - 10
JR7-11610-10	3 - 3	1WG-14922-00	7 - 18	J10-81148-10	32 - 8	JN6-F3394-00	15 - 13	JR6-F7215-00	16 - 55	JN3-G633G-00	23 - 20
JR7-11610-20	3 - 3	JN6-1495H-3B	7 - 9	JF2-81910-01	35 - 15	J10-F3459-00	14 - 11	JW5-F722B-00	12 - 7	JN3-G6344-00	23 - 55
JR7-11631-00-A0	3 - 2	JR7-15100-00	9 - 1	4U8-81950-02	35 - 24	JR6-F3501-10	13 - 4	JN6-F722E-00	17 - 5	JN3-G6344-10	23 - 55
583-11633-00	3 - 4	JR7-15123-00	9 - 4	JN6-82318-00	34 - 12	JN6-F3502-10	13 - 15	JN3-G6344-20	18 - 5	JN3-G6344-20	23 - 55
JR7-11635-00	3 - 2	JN6-15155-00	9 - 2	JN6-82370-00	34 - 16	JN3-F3512-00	13 - 5	JN3-F7245-00	16 - 30	JN3-G6344-30	23 - 55
JR7-11636-00	3 - 2	J38-15361-00	9 - 21	JE8-82372-00	34 - 17		13 - 16	JR6-F7263-00	13 - 35	JN3-G6344-40	23 - 55
JN6-11650-00	3 - 6	796-15363-01	9 - 19	JN3-82617-01	25 - 19	JR6-F3516-00	13 - 10	JR6-F7264-00	13 - 36	JN3-G6344-50	23 - 55
JN6-11654-00	3 - 7	JR7-15407-00	9 - 3	JF7-82817-20	35 - 17	JN6-F3526-00	13 - 2	JN3-G6344-60	13 - 34	JN3-G6344-60	23 - 55
JN6-12111-01	4 - 2	JN6-15411-00	9 - 12	4LR-83371-10	35 - 34		13 - 14	JN3-G6344-70	18 - 1	JN3-G6344-70	23 - 55
J38-12117-01	4 - 6	JN6-15451-02	9 - 16	123-83516-21	35 - 33	JU5-F3570-10	13 - 1	JN3-G6344-80	23 - 33	JN3-G6344-80	23 - 55
J38-12118-00	4 - 7	JR6-19001-00	1 - 1	JN6-83530-00	35 - 32	JU5-F3580-10	13 - 13	JN3-G6344-90	17 - 4	JN3-G6344-90	23 - 55
4G0-12119-00	4 - 13	7UH-2111F-00	5 - 10	2GU-84334-00	33 - 8	JG5-F3811-00	14 - 1	JN3-G6344-A0	18 - 4	JN3-G6344-A0	23 - 55
7RH-12121-00	4 - 3	J10-21773-00	15 - 4	JN6-85640-01	34 - 10	JN3-F3814-00	14 - 14	JN6-F7290-03	13 - 33	JN3-G6344-B0	23 - 55
JN6-12151-00	4 - 8	JR6-2179R-01	5 - 9	JR7-85650-00	34 - 9	JN3-F3818-00	14 - 9		17 - 1	JN3-G6344-C0	23 - 55
JN6-12153-00	4 - 4	J55-2252M-00	16 - 34	JN6-85720-12	34 - 21	JN6-F3830-11	14 - 23		23 - 32	JN3-G6344-D0	23 - 55
JR7-12154-01	4 - 12	J10-23444-00	14 - 8	JN6-85724-00	34 - 23	JN3-F3838-00	14 - 16	JN6-F7874-01	19 - 1	JN3-G6355-00	23 - 21
J38-12156-00	4 - 11	J38-23462-01	14 - 10	JN6-E1166-00	2 - 14	JN6-F3841-00	14 - 24	JN6-F819G-00	17 - 3	JN3-G6356-00	23 - 40
22F-12159-00	4 - 9	J38-23527-00	13 - 9	JN6-E2691-00	5 - 11		14 - 29		18 - 3	JJ3-G6371-01	25 - 4
JR7-12170-00	4 - 1	J38-23816-00	14 - 2	JN6-E3586-01	6 - 14	JN6-F3845-00	14 - 25	JH7-G5619-00	23 - 31	JN3-G6372-00	25 - 17
JN6-12616-00	5 - 3	J38-23826-01	14 - 19	JN6-E4411-02	6 - 10		14 - 30	JH7-G6136-00	23 - 16	JN3-G6376-00	25 - 10
JN6-12621-00	5 - 1	J38-23836-00	14 - 3	JN6-E4412-01	6 - 11	JN6-F3850-11	14 - 28	JN3-G6153-00	23 - 53	JN3-G6381-00	25 - 9
JN6-12651-00	5 - 5	J10-23840-00	14 - 15	JN6-E4424-00	6 - 15	J55-F3876-00	14 - 5	JN6-G6201-04	21 - 1	J55-G6383-00	25 - 3
JN6-12652-00	5 - 7	J10-23877-00	14 - 7	JN6-E4450-01	6 - 12	5UG-F389E-00	30 - 10	JN6-G6210-00	21 - 2	JN3-G638A-00	23 - 44
JR7-12658-00	5 - 6	J24-24460-01	15 - 5	JN6-E445E-00	6 - 13	JU5-F4110-00	15 - 1	JN6-G621F-00	21 - 19	JN6-G638E-00	23 - 45
JN6-13567-00	6 - 3	J10-24612-00	15 - 7	JU0-E4710-10	8 - 1	JU0-F4161-00	27 - 7	JN6-G6220-00	21 - 3	JJ3-G6394-00	25 - 21
JN6-13595-00	6 - 1	J24-24620-01	15 - 6	JN6-E7688-00	22 - 8	JU5-F4300-00	15 - 2	JU0-G6231-00	21 - 15	JN6-G6410-00	23 - 5
JR6-14101-00	7 - 1	J17-25666-02	16 - 12	JU7-F111A-00	31 - 4	JN6-F4311-20	15 - 16	JN6-G6232-01	21 - 8	JN3-G6432-00	23 - 15
7LV-14118-00	7 - 24	JU0-25671-00	16 - 4	JR6-F1339-00	13 - 29	JU5-F4312-00	15 - 14	J55-G6241-00	21 - 21	JR3-G6511-00	23 - 23
732-14142-65-A0	7 - 8	J17-25672-01	16 - 18	JN6-F1411-00	10 - 4	JN6-F4313-20	15 - 17	JN3-G6249-00	23 - 58	JR3-G6512-00	23 - 24
73A-1414G-00	7 - 10	J17-25673-00	16 - 23	JN6-F1419-02	10 - 5	JN6-F4314-20	15 - 18	JN6-G6249-00	21 - 20	JR3-G6514-00	23 - 27
JN5-14150-00	7 - 16		16 - 37	JN6-F1435-10	8 - 6	JU5-F4375-00	15 - 3	JN6-G6251-01	21 - 11	J55-G6521-10	13 - 32
7R1-14162-00	7 - 15	J10-25681-00	16 - 43	JR3-F1459-00	10 - 6	JN6-F4410-10	15 - 12	JN6-G6253-00	21 - 14		24 - 3
796-14184-00	7 - 12	JU0-27211-01	16 - 3	JN6-F1481-00	10 - 3	JN6-G6258-02	15 - 15	JN6-G6258-02	21 - 12	JN6-G6555-00	23 - 7
JN6-14185-00	7 - 13	J17-27221-00	16 - 14	JW5-F153A-00	29 - 11	JN6-F5100-20	13 - 31	JN6-G6260-00	22 - 1	JN3-G6556-00	23 - 29
22F-14186-00	7 - 17	J17-27228-00	16 - 24	JR6-F1546-00	27 - 6	JR6-F5110-00	13 - 21	JN6-G6270-01	22 - 2	JJ3-G8330-01	25 - 2

NUMERICAL INDEX

PART NO.	REF. NO.	PART NO.	REF. NO.	PART NO.	REF. NO.	PART NO.	REF. NO.	PART NO.	REF. NO.	PART NO.	REF. NO.
JN6-H1100-02	32 - 1	JN3-H4718-00	34 - 25	JN6-K8231-01	28 - 18	90110-04834	22 - 9	90201-104G8	16 - 29	90387-107F8	16 - 38
JN6-H1110-10	32 - 6	JU7-H5415-00	33 - 11	JN6-K8232-01	28 - 19	90110-06836	27 - 5	90201-128S4	11 - 10	90387-12009	16 - 27
JF2-H1111-00	32 - 20	JU9-K6179-00	30 - 5	JN6-K8233-01	28 - 17		28 - 13	90201-128S5	22 - 13	90387-241M7	13 - 25
JN6-H1113-00	32 - 21	JU9-K6189-00	30 - 6	JU0-K8261-00	27 - 10	90111-06810	31 - 6	90201-158S6	13 - 11	90461-08031	35 - 6
J10-H1115-10	32 - 22	JU9-K7171-00	30 - 8	JF2-K8262-01	27 - 12	90113-08803	23 - 46	90201-178H8	23 - 36	90464-09823	34 - 8
JN6-H1119-00	32 - 19	JU9-K7172-00	30 - 11	JF2-K8263-01	27 - 13	90114-10804	23 - 28	90201-18620	34 - 14	90464-10814	28 - 16
J10-H1129-10	32 - 25	JU9-K7195-00	30 - 4	JF2-K8264-00	27 - 15	90114-12803	13 - 22	90201-198S7	25 - 12	90464-11816	15 - 21
J10-H1139-10	32 - 26	JN3-K7510-02	26 - 1	JF2-K8265-00	27 - 18	90119-06830	30 - 12	90201-208H9	23 - 41	90464-14806	35 - 28
J10-H1147-10	32 - 15	JU0-K7573-00	27 - 8	JN6-K8271-00	29 - 1		30 - 28	90201-208J0	23 - 42	90464-19815	16 - 54
JN3-H1150-00	32 - 2	JJ3-K7588-00	30 - 30	JN3-K8357-00	30 - 33	90119-06837	31 - 14	90201-208S8	25 - 11	90464-31827	6 - 21
J10-H1157-10	32 - 3	JU9-K7739-10	30 - 7	JN6-K8358-01	30 - 35	90119-06838	6 - 4	90201-228K5	21 - 18	90464-40825	19 - 21
J10-H1158-10	32 - 4	JN3-K7741-00	28 - 23	JF2-K835E-00	27 - 26	90119-08800	28 - 12	90202-12807	23 - 50		35 - 25
J10-H1159-10	32 - 5	JU5-K7761-00	27 - 29	JJ3-K8369-00	30 - 27	90119-08825	8 - 5	90202-20130	22 - 12	90465-06038	25 - 20
JN6-H1160-10	32 - 7	JU9-K7764-00	31 - 16	JU9-K8380-01	30 - 17	90150-06802	33 - 9	90204-06807	31 - 7	90467-10846	15 - 20
JN3-H1161-00	32 - 30	JJ3-K7765-00	28 - 22	JU9-K8384-00	30 - 9	90159-06107	9 - 5	90209-32832	13 - 26	90467-12845	15 - 19
J38-H1165-10	32 - 13	JU7-K7767-00	31 - 17	JU9-K8401-00	31 - 1	90163-06005	35 - 14	90215-16814	14 - 21	90467-13847	2 - 17
J10-H1166-10	32 - 14	JU5-K7768-00	28 - 24	JU7-K8402-00	31 - 8	90167-04815	31 - 10	90240-13801	30 - 22	90468-10049	6 - 6
JN6-H1170-00	34 - 1	JU5-K810M-00	30 - 1	JU9-K8404-00	31 - 2	90170-05302	4 - 10	90249-14129	16 - 44		6 - 9
JN6-H1171-00	34 - 18	JU9-K8111-00	28 - 4	JJ3-K8413-10	31 - 9	90170-08024	14 - 12	90252-36801	23 - 11		19 - 16
JN6-H1173-00	34 - 7	JU9-K8112-00	28 - 5	JU9-K8420-00	31 - 3	90170-08841	23 - 35	90267-36853	28 - 6	90480-13018	28 - 15
JN3-H1661-00	32 - 29	JU7-K8114-00	27 - 23	JN3-K8426-01	31 - 5	90170-10414	14 - 27	90267-40851	11 - 16	90501-10060	33 - 7
5FU-H191B-10	35 - 27	JU6-K811A-00	27 - 1	JJ3-K8427-01	28 - 9		14 - 32	90267-48154	29 - 4	90501-10852	23 - 47
5FU-H1920-10	35 - 26	JF2-K811V-00	27 - 9	JU9-K8564-00	30 - 3	90170-10840	23 - 13	90267-48831	27 - 4	90501-264A9	4 - 5
JR3-H1950-00	35 - 12	JF2-K811W-00	27 - 17	JN6-W001D-00	30 - 34	90170-10847	12 - 4		29 - 8	90502-10013	30 - 38
JN6-H2105-00	35 - 13	JF2-K811X-00	27 - 20	90101-06478	34 - 5	90179-07564	16 - 8	90267-48850	11 - 15	90506-09001	16 - 22
JG5-H2110-01	35 - 23	JN6-K8121-00	31 - 12	90101-08855	23 - 34	90179-08879	8 - 3	90267-62841	28 - 25	90506-26282	19 - 13
JU9-H2115-00	35 - 5	JN6-K8122-02	31 - 13	90101-08856	23 - 17	90179-08885	10 - 10	90267-63047	28 - 21	90508-14548	16 - 17
JR3-H2116-00	35 - 7	JJ3-K8124-00	29 - 5	90101-08880	10 - 9	90179-08894	16 - 45	90267-64834	28 - 10	90508-16460	19 - 17
JR3-H2117-00	35 - 8	JU9-K8141-00	28 - 2	90101-10854	23 - 12	90179-12262	13 - 30	90269-08066	27 - 24	90508-32015	16 - 28
JN3-H2133-00	35 - 1	JU9-K8142-00	28 - 1	90101-10884	16 - 32		24 - 2	90269-08069	27 - 30	90508-40007	16 - 31
J55-H2136-00	35 - 2	JJ3-K814H-00	28 - 11	90105-06861	21 - 17	90179-13878	11 - 4	90269-08813	5 - 12	90508-40678	20 - 4
JN6-H2151-00	35 - 10	JU5-K8158-00	30 - 25	90105-06862	6 - 17	90179-16889	32 - 31		28 - 20	90508-45849	22 - 10
JU7-H2151-00	35 - 11	JN3-K815G-00	27 - 25	90105-06876	16 - 53	90183-05008	33 - 10	90269-11042	27 - 22	90560-05001	19 - 18
JU7-H2510-00	35 - 30	JJ3-K815H-01	30 - 24		25 - 18	90183-06811	28 - 3	90280-04052	34 - 15	91401-20012	25 - 8
5UG-H2579-00	35 - 31	JN8-K8164-00	26 - 2		26 - 3	90185-06834	21 - 10	90280-05022	22 - 11	91401-20020	30 - 26
JU9-H2590-00	35 - 9	JU5-K8167-00	30 - 32		35 - 16	90185-06836	27 - 14	90338-04840	21 - 7	91401-25020	13 - 8
JR6-H270X-00	35 - 35		31 - 15	90105-08859	23 - 8	90185-08841	8 - 4	90340-12097	9 - 9		14 - 34
JR1-H3383-01	35 - 21	JF2-K8187-00	29 - 6	90105-08878	16 - 36	90185-12061	14 - 17	90384-10162	16 - 13	91401-30025	30 - 23
JN6-H3386-01	35 - 22	JF2-K8189-00	29 - 7		19 - 12	90185-12072	11 - 13	90384-14080	16 - 2	91490-25015	16 - 52
JU7-H3547-00	33 - 12	JN3-K818E-00	27 - 31	90105-10840	23 - 14	90185-19842	23 - 30		19 - 10	91490-30015	16 - 42
JU7-H4118-00	33 - 13	JJ3-K818M-00	30 - 21	90105-10880	14 - 22	90201-048R5	30 - 37	90384-15825	13 - 3	91609-35028	19 - 5
JU7-H4119-00	33 - 14	JU9-K818N-00	30 - 13	90105-10894	13 - 17	90201-06829	27 - 11	90384-20824	22 - 4	91609-60028	19 - 4
JU7-H411T-00	33 - 4	JJ3-K8191-00	29 - 9	90105-10895	13 - 6	90201-068R6	27 - 27	90384-27823	21 - 5	91701-05010	6 - 5
JU7-H411U-00	33 - 5	JJ3-K8192-00	29 - 10	90105-13864	11 - 3		28 - 14	90386-08141	20 - 3		6 - 8
5FU-H4314-00	33 - 1	JU9-K819K-00	30 - 2	90106-08806	19 - 8	90201-088K6	10 - 8	90387-046N7	30 - 39	91701-05012	19 - 15
5FU-H4320-00	33 - 2	JF2-K8215-10	29 - 2	90109-06860	21 - 9	90201-088P7	30 - 20	90387-068T4	19 - 22	91701-06014	25 - 6
5FU-H4340-00	33 - 3	JF2-K821F-10	29 - 3	90109-08875	34 - 3	90201-088S2	15 - 10	90387-08013	16 - 6	91701-08018	16 - 50
JN3-H4700-00	34 - 24	JJ3-K8226-00	28 - 8	90109-10862	12 - 3	90201-10144	30 - 16	90387-08014	16 - 5	91701-10022	16 - 41

NUMERICAL INDEX

PART NO.	REF. NO.	PART NO.	REF. NO.	PART NO.	REF. NO.	PART NO.	REF. NO.	PART NO.	REF. NO.	PART NO.	REF. NO.
91701-10028	16 - 51	93410-12822	23 - 49	95707-08500	19 - 9	99530-08016	9 - 11				
92017-10035	30 - 14	93410-25017	23 - 59		24 - 6	99530-14016	2 - 5				
92902-04100	7 - 21	93420-52806	23 - 25		34 - 4						
92907-04100	25 - 15	93440-20813	23 - 43	95707-16300	14 - 20						
92907-04600	25 - 16	93450-21053	3 - 5	95807-06020	5 - 2						
92907-05100	35 - 19	93500-06826	23 - 48		5 - 8						
92907-05600	16 - 25	93606-10842	23 - 54		14 - 13						
	35 - 20	93610-358A3	21 - 13	95807-06025	19 - 7						
92907-08100	15 - 9	93700-06809	22 - 5		19 - 19						
92907-08200	16 - 11	93700-06810	21 - 6	95807-10055	13 - 20						
92907-10600	16 - 15	94702-00343	2 - 7	95807-10065	13 - 19						
9290N-06100	32 - 11	94702-00348	2 - 7	95817-08045	9 - 17						
	32 - 18	9502P-08025	13 - 37	95817-10050	9 - 18						
9290N-06600	32 - 10	95307-06600	20 - 2	95817-10070	2 - 4						
	32 - 17		34 - 6	9581P-08016	26 - 4						
	32 - 28	95307-06700	16 - 21	9581P-08075	24 - 5						
9290P-06200	35 - 3	95307-08600	16 - 10	9581P-12025	34 - 20						
9290P-06600	25 - 7	95307-08700	16 - 46	9581P-12065	11 - 8						
9290P-10100	12 - 5	95307-18600	34 - 13		11 - 12						
9290P-10200	10 - 2	9530N-06600	32 - 9	95827-06012	34 - 22						
	12 - 6		32 - 16	95827-06025	34 - 11						
9290P-12200	14 - 18	9530N-10600	14 - 26	95827-06030	2 - 13						
92990-05100	7 - 3		14 - 31	9582P-06016	35 - 36						
9299R-08200	10 - 7	95607-08100	25 - 1	9582P-08020	30 - 18						
93101-28831	21 - 4	95607-08710	2 - 15		34 - 2						
93101-31836	23 - 22	95607-10200	13 - 7		34 - 19						
93102-22082	14 - 4		14 - 33	97007-08025	15 - 8						
93102-25868	23 - 3		16 - 33	97027-06035	16 - 7						
93102-35014	9 - 7	95607-12200	22 - 14	97027-08100	16 - 9						
	9 - 14	95607-14100	13 - 27	9751P-10620	11 - 5						
93104-11829	23 - 51	9560P-06200	20 - 6		24 - 7						
93109-10820	23 - 52		27 - 16	97707-40112	33 - 15						
93109-20069	22 - 6		27 - 19	97707-40525	30 - 36						
93210-132A8	16 - 40		30 - 29	97707-60520	5 - 4						
93210-14104	19 - 11	9560P-08200	13 - 38	9770P-60130	27 - 28						
93210-22344	9 - 20		15 - 11	98507-03540	33 - 6						
93210-398D6	6 - 16		30 - 19	98507-04010	7 - 20						
93306-005Y3	13 - 24		30 - 31	98507-04025	25 - 14						
93306-005Y4	23 - 6		31 - 11	98507-05008	7 - 2						
93306-007Y0	23 - 9	9560P-10200	10 - 1	98507-05025	35 - 18						
93306-20201	9 - 8		13 - 12	9850N-04010	32 - 24						
	9 - 15		30 - 15	9850N-05016	32 - 23						
93306-204X0	13 - 23	9560P-12200	11 - 9	9850N-05018	32 - 32						
93306-205X2	23 - 26	95627-08618	2 - 6	99001-04600	16 - 26						
93306-20714	9 - 13	95707-06500	19 - 20	99001-07600	6 - 7						
93306-303Y6	23 - 4		35 - 4		16 - 16						
93306-30709	9 - 6		35 - 37	99001-09600	16 - 49						
93332-000Y2	14 - 6	95707-08500	6 - 2	99009-19400	25 - 13						