



PARTS CATALOGUE

G31-E (JX51) SOUTH EAST ASIA, SOUTH KOREA



1EJX5-400E1

()

G31-E
PARTS CATALOGUE
©2005 by Yamaha Motor Co., Ltd.
1st edition, December 2005
All rights reserved.
Any reprinting or unauthorized use
without the written permission of
Yamaha Motor Co., Ltd.
is expressly prohibited.
Printed in Japan.

FOREWORD

This Parts Catalogue is related to the parts for the model(s) on the cover page. When you are ordering replacement parts, please refer to this Parts Catalogue and quote both part numbers and part names correctly.

1. Modifications or additions which have been made after the issue of the Parts Catalogue will be announced in the Parts News.

It is advisable that you make the necessary corrections to the Parts Catalogue according to the Parts News.

2. Abbreviations

The following abbreviations are used in this Parts Catalogue.

“UR” Use specified parts number.

“UN” Use as many as needed.

“AP” Alternate Parts

“LM” Locally Made (Parts need to be ordered locally)

“F#” Frame No. (Applicable machine No.)

“O/S” Over Size

3. The number of components for assembly

- Parts, which are to be supplied in an assembly, are listed with a dot (.) in front of the part name as shown below.
- The numeral appearing to the right of each component part indicates the quantity of parts for each assembly unit.

PART NO.	DESCRIPTION	Q'TY	REMARKS
2F5-83310-60	FRONT FLASHER LIGHT ASSY	2	
115-83311-60	.BULB (6V-18W)	1	

4. Applicable colours of graphics are represented in the “REMARKS” as shown below.

PART NO.	DESCRIPTION	Q'TY	REMARKS
2N4-24110-00-X5	FUEL TANK COMP.	2	MXR
3J1-24240-10	.GRAPHIC, FUEL TANK	1	FOR MXR

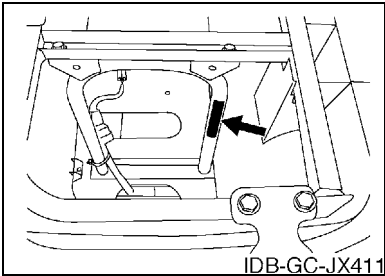
5. Note that the illustrations for reference in finding parts numbers are not to be used for assembling. When assembling, please use the applicable service manual.

6. The asterisk (*) before a reference number indicates modified items after the first edition.

FOREWORD

7. Applicable Serial No.

Frame Serial No.



10. Applicable Starting Serial No.

Frame Serial No.

Serial No.	Name Of Q'ty Column	Model Code
JX5-0160101	JX51	JX51

8. Applicable Colour Code (The (*) mark shows Model colour.)

Abbreviation	Colour Name	Colour Code
DPBMC(*)	DEEP PURPLISH BLUE METALLIC C	0564
DRMD(*)	DULL RED METALLIC D	0779
OM1(*)	ORANGE METALLIC 1	0366
RW(*)	RADICAL WHITE	00UJ
VDGS1(*)	VERY DARK GREEN SOLID 1	0614

9. Quantity Column Information

Column No.	Name Of Q'ty Column	Destination
1	JX51	SOUTH EAST ASIA,SOUTH KOREA

CONTENTS

BODY

REAR ARM & SUSPENSION	1
FRAME	2
FRONT SUSPENSION & WHEEL	3
STEERING	5
BRAKE	7
BRAKE 2	10
BRAKE 3	11
ACCELERATOR	12

DRIVE

TRANSAXLE	14
REAR AXLE & WHEEL	16

R/G

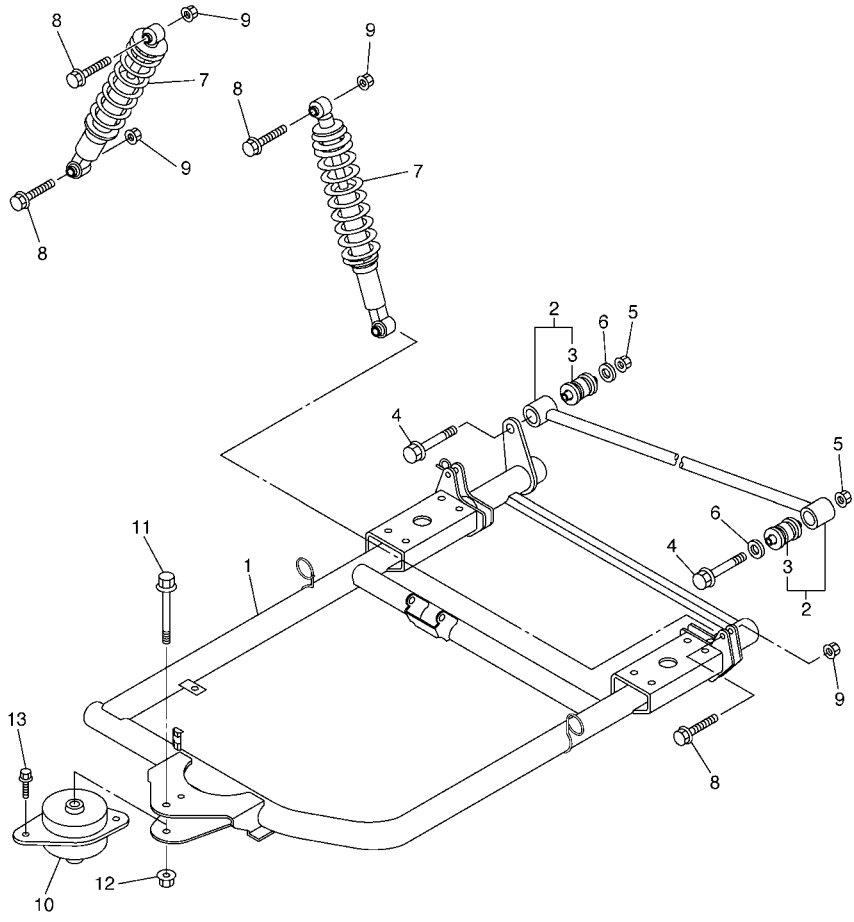
WINDSHIELD	17
BUMPER	19
BODY	20
BODY 2	22
BODY FITTING	24
SUN ROOF	25
CARRIER	27
SEAT	29

ELECTRICAL

ELECTRIC MOTOR	32
CONTROL UNIT	33
ELECTRICAL 1	34

INDEX

NUMERICAL INDEX	36
-----------------------	----



JX51010-E010

FIG. 1 REAR ARM & SUSPENSION

REF. NO.	PART NO.	DESCRIPTION	JX51				REMARKS
1	JX5-22110-00	REAR ARM COMP.	1				
2	JX4-22172-00	ARM, REAR 2	1				
3	JX4-22124-00	.BUSH 2	2				
4	95817-12065	BOLT, FLANGE	2				
5	90185-12072	NUT, SELF-LOCKING	2				
6	90201-121J0	WASHER, PLATE	2				
7	JX3-22210-00	SHOCK ABSORBER ASSY, REAR	2				
8	95827-10045	BOLT, FLANGE	4				
9	95607-10200	NUT, U FLANGE	4				
10	JX4-22123-00	BUSH 1	1				
11	90105-12031	BOLT, FLANGE	1				
12	95607-12200	NUT, SELF-LOCKING	1				
13	95817-10020	BOLT, FLANGE	2				

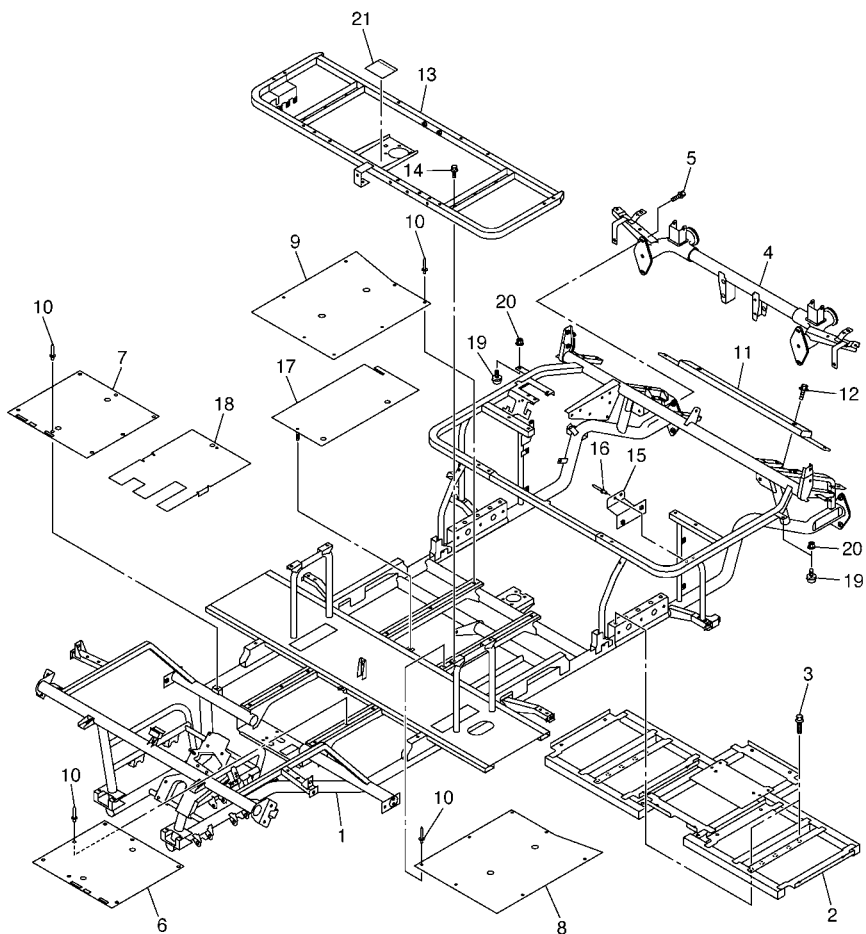


FIG. 2 FRAME

REF. NO.	PART NO.	DESCRIPTION	JX51				REMARKS
1	JX5-22501-01	FRAME COMP.	1				
2	JX5-22506-01	RR,CROSS MEMBER SUB ASSY	1				
3	95827-08016	BOLT, FLANGE	4				
4	JX4-22504-00	RR. SUB-FRAME COMP.	1				
5	95817-10025	BOLT, FLANGE	4				
6	JX4-22571-00	PANEL 1	1				
7	JX4-22572-00	PANEL 2	1				
8	JX4-2257D-00	PANEL, 4	1				
9	JX4-2257F-00	PANEL, 5	1				
10	90267-48101	RIVET, BLIND	20				
11	JX4-22597-00	REINFORCEMENT 2	1				
12	95817-08020	BOLT, FLANGE	2				
13	JX5-78460-00	SEAT FRAME COMP.	1				
14	95807-06012	BOLT, FLANGE	4				
15	JX3-22562-00	STAY,FUSE	1				
16	90267-48101	RIVET, BLIND	2				
17	JX4-2259A-00	PLATE 4	1				
18	JX4-78271-00	SERVICE LID, PEDAL	1				
19	5GJ-22426-00	BUMP, STOP	2				
20	95607-06200	NUT, SELF U-FLANGE	2				
21	JX5-78299-10	PLATE, CAUTION	1				UR FOR SEA
	JX5-78299-00	PLATE, CAUTION	1				UR FOR KOR



JX51010-E020

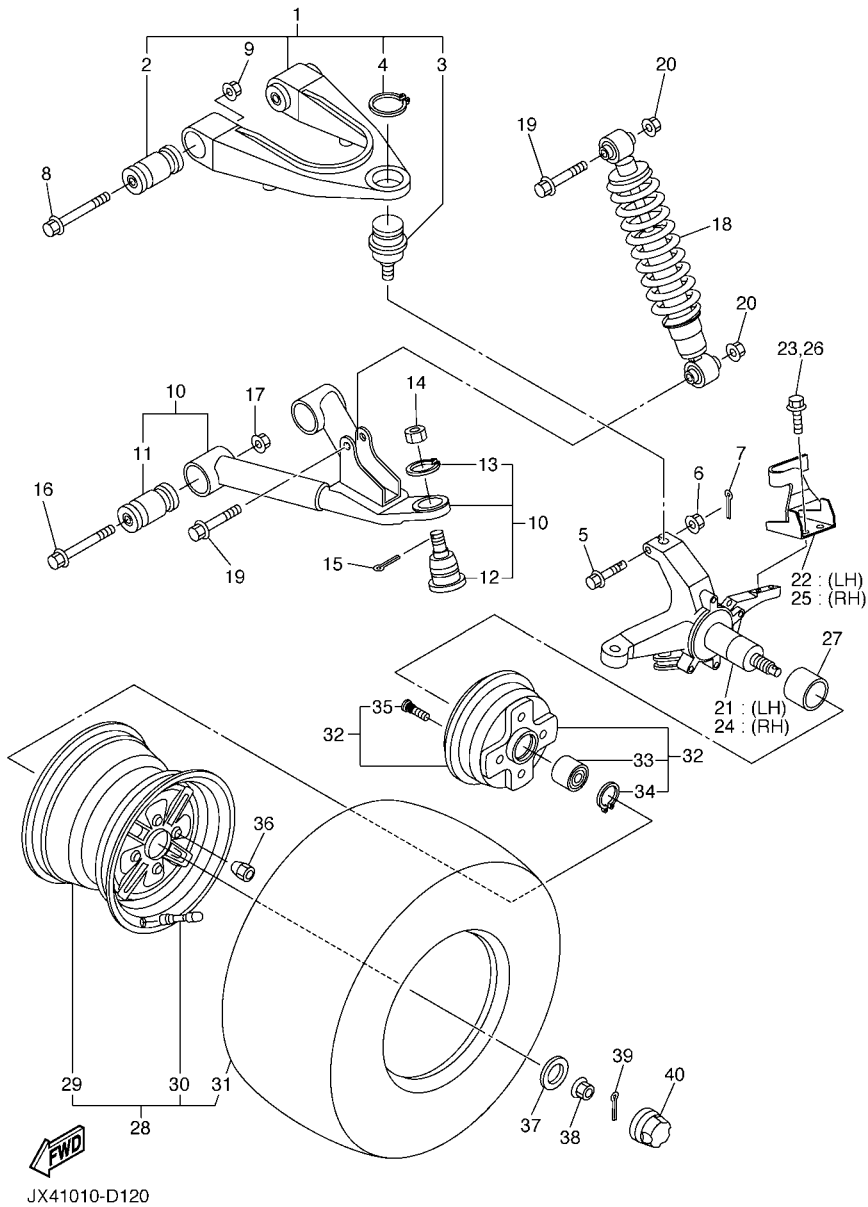


FIG. 3 FRONT SUSPENSION & WHEEL

REF. NO.	PART NO.	DESCRIPTION	JX51				REMARKS
1	JX4-23540-00	FRONT UPPER ARM COMP.	2				
2	2HR-23526-00	.BUSH	2				
3	JX4-23549-00	.BALL JOINT 1	1				
4	99009-30400	.CIRCLIP	1				
5	90105-10728	BOLT, FLANGE	2				
6	95707-10500	NUT, FLANGE	2				
7	91401-25020	PIN, COTTER	2				
8	95817-10070	BOLT, FLANGE	4				
9	95607-10200	NUT, U FLANGE	4				
10	JX4-23570-00	FRONT LOWER ARM COMP.	2				
11	2HR-23526-00	.BUSH	2				
12	JX4-23579-00	.BALL JOINT 2	1				
13	99009-32400	.CIRCLIP	1				
14	90171-12039	NUT, CASTLE	2				
15	91401-25020	PIN, COTTER	2				
16	95817-10070	BOLT, FLANGE	4				
17	95607-10200	NUT, U FLANGE	4				
18	JX4-23350-00	SHOCK ABSORBER ASSY	2				
19	95827-10045	BOLT, FLANGE	4				
20	95607-10200	NUT, U FLANGE	4				
21	JX4-23510-00	KNUCKLE, STEERING COMP. (LEFT)	1				
22	JX4-2357F-00	ARM, TENSION LH.	1				
23	95817-06020	BOLT, FLANGE	2				
24	JX4-23520-00	STEERING KNUCKLE COMP. (RIGHT)	1				
25	JX4-2358F-00	ARM, TENSION RH.	1				
26	95817-06020	BOLT, FLANGE	2				
27	90387-30006	COLLAR	2				

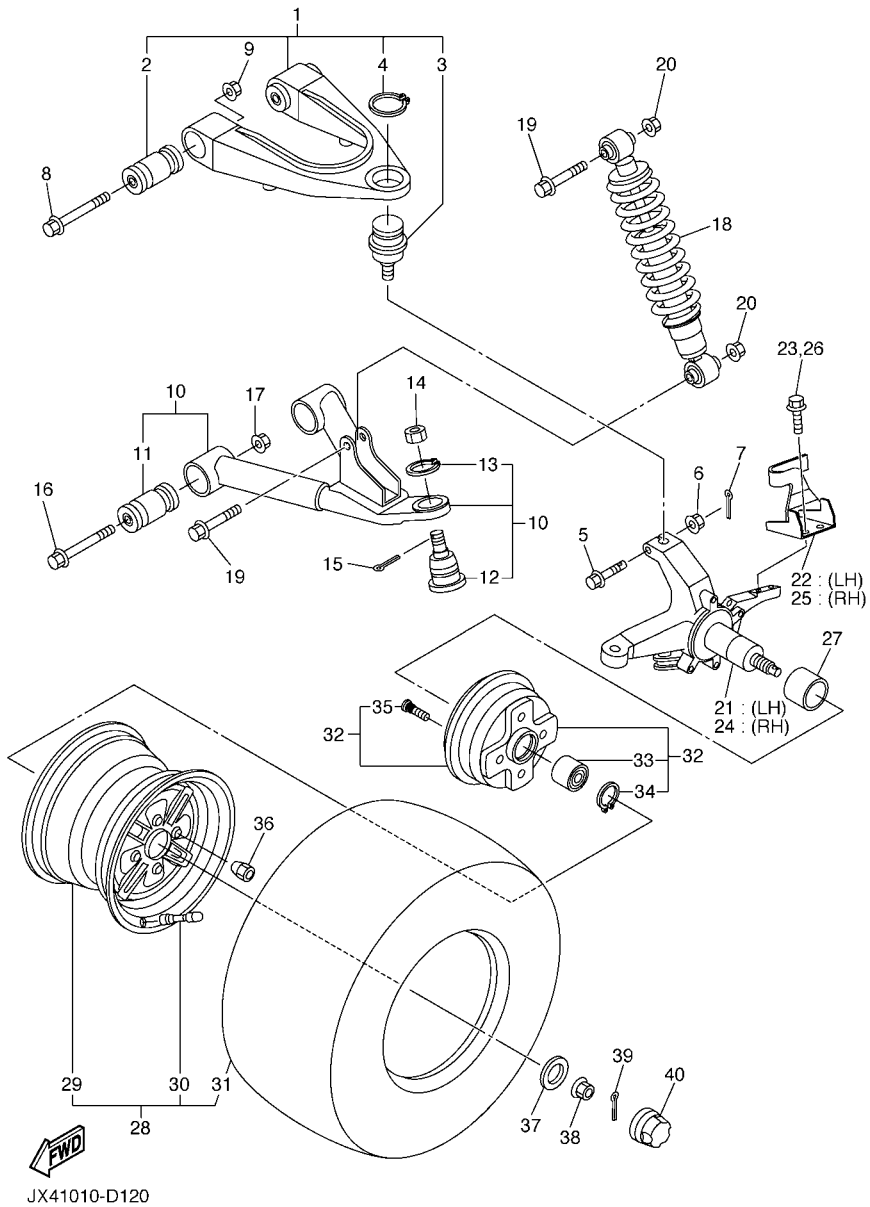
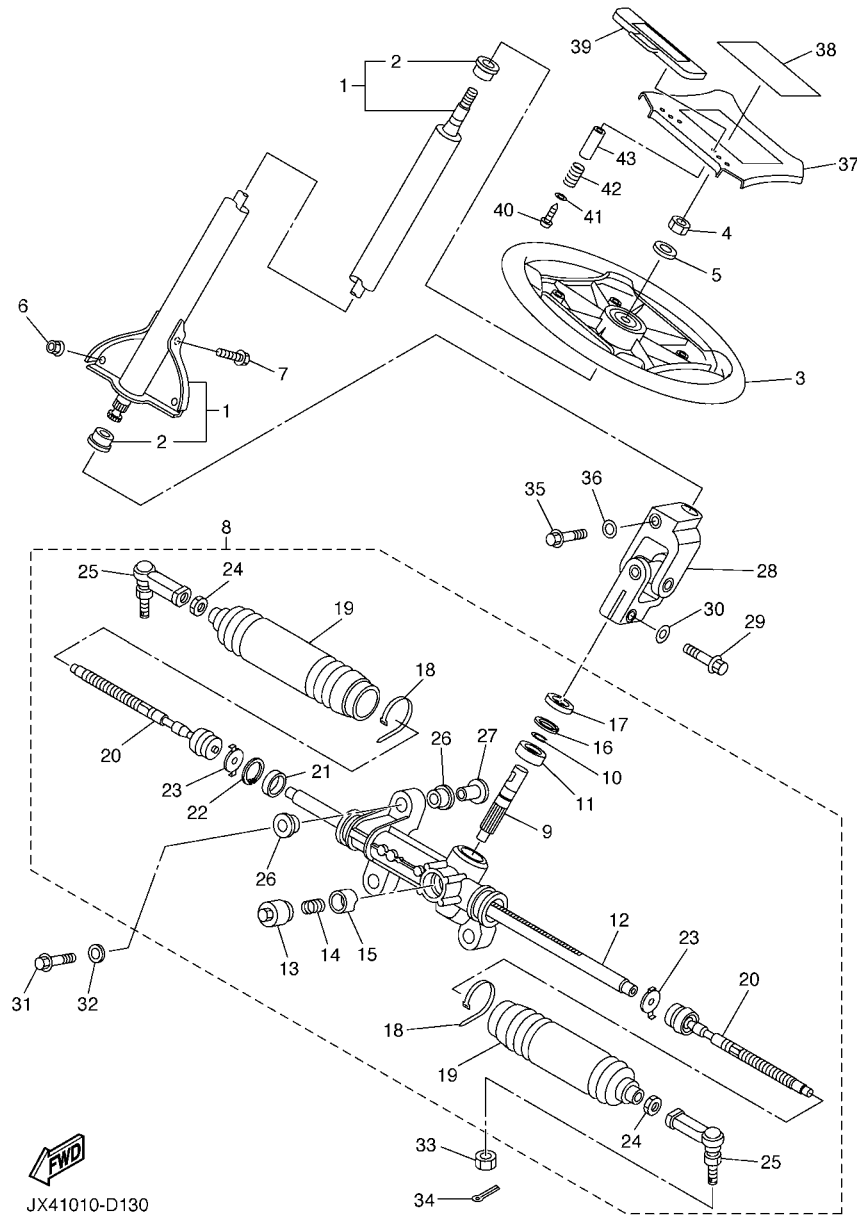


FIG. 3 FRONT SUSPENSION & WHEEL

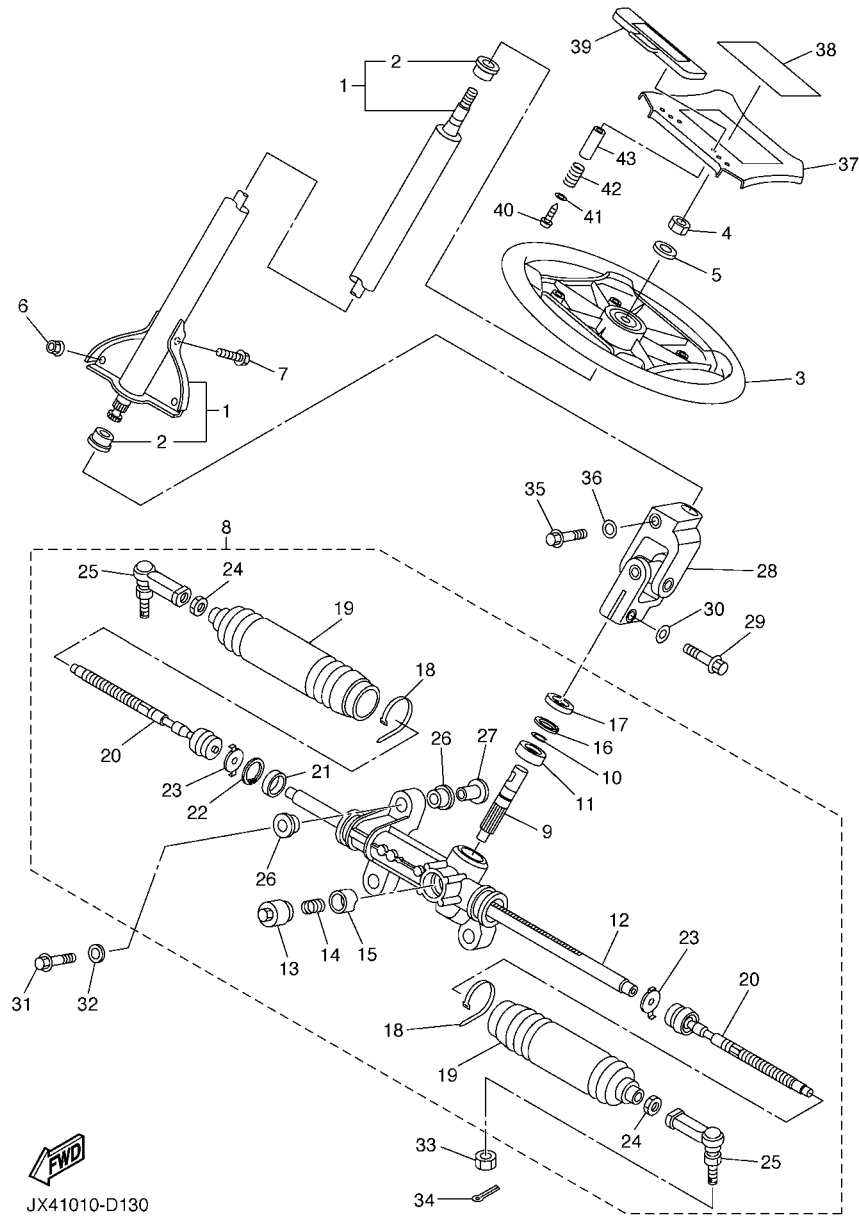
REF. NO.	PART NO.	DESCRIPTION	JX51				REMARKS
28	JX4-25100-00	WHEEL ASSY	2				
29	JX4-25180-00	.WHEEL COMP.	1				TAIHEIYO
30	93900-00022	.VALVE, RIM (TR413)	1				
31	JX4-2510S-00	.TIRE (190/50-12-4PR A520)	1				
32	JX4-25110-00	HUB ASSY, FRONT	2				
33	93305-00601	.BEARING	1				
34	99009-55500	.CIRCLIP	1				
35	90114-10003	.BOLT, SERRATION	4				
36	90179-10540	NUT	8				
37	90201-16019	WASHER, PLATE	2				
38	95604-16200	NUT, U FLANGE	2				
39	91401-25020	PIN, COTTER	2				
40	5GT-2512A-00	CAP, WHEEL	2				



JX41010-D130

FIG. 4 STEERING

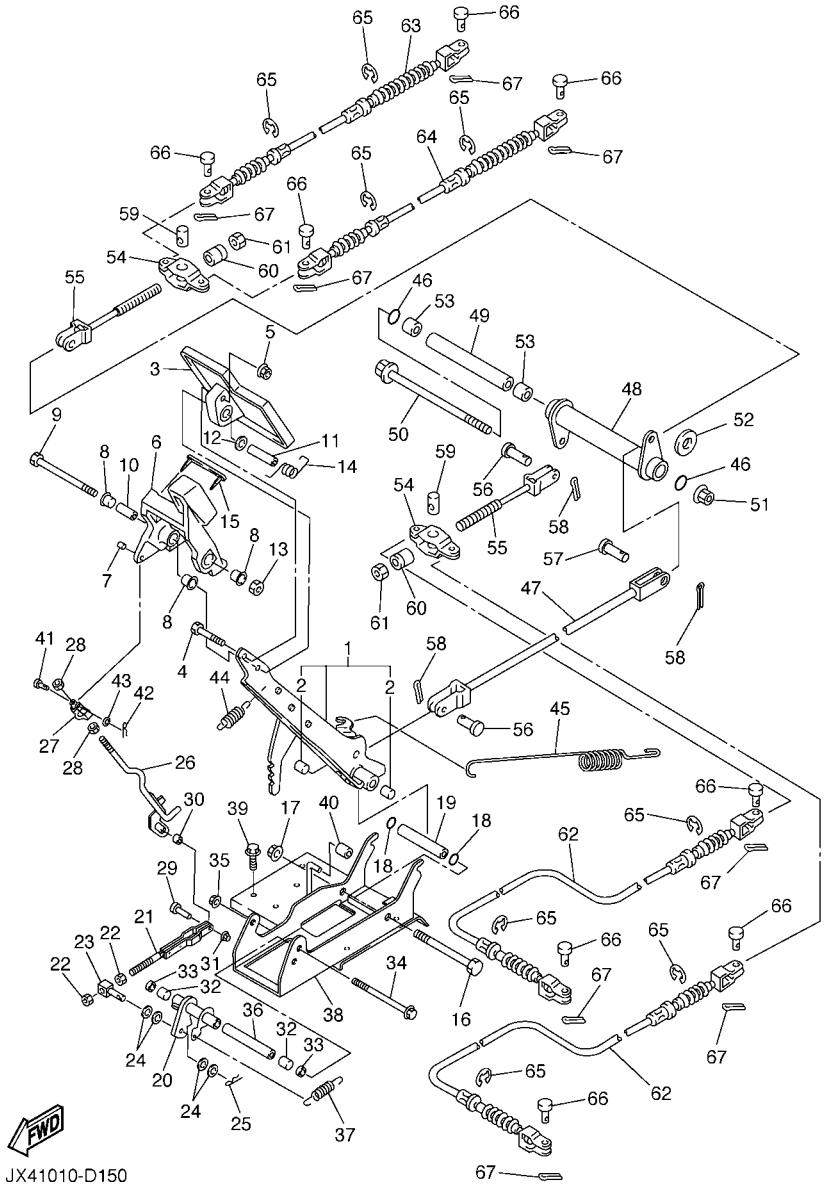
REF. NO.	PART NO.	DESCRIPTION	JX51				REMARKS
1	JX4-23810-00	STEERING COLUMN ASSY	1				
2	J50-23857-00	.HOLDER	2				
3	JN5-23838-00	WHEEL, STEERING	1				
4	95607-12100	NUT, U	1				
5	90201-12190	WASHER, PLATE	1				
6	95707-08500	NUT, FLANGE	2				
7	95817-08020	BOLT, FLANGE	1				
8	JX4-23400-00	STEERING ASSY	1				
9	JX4-2387A-00	.GEAR, PINION	1				
10	JX4-2384N-00	.CLIP, RING	1				
11	JX4-23812-00	.PLANE BEARING, STEERING	1				
12	JX4-2387E-00	.GEAR, RACK	1				
13	JR7-2387G-00	.COVER, ADJUST	1				
14	JR7-2387K-00	.SPRING, PRESSURE	1				
15	JR7-2387F-00	.PAD, PRESSURE	1				
16	JR7-2387J-00	.RING, STOPPER	1				
17	JR7-23844-00	.SEAL	1				
18	90464-50268	.CLAMP	2				
19	JR7-23848-00	.BOOTS B	2				
20	JX4-23837-00	.ROD, TIE 2	2				
21	JR7-2467K-00	.BUSH CAP	1				
22	JR7-23866-00	.RING, SNAP	1				
23	JR7-23894-00	.WASHER, LOCK 1	2				
24	JR7-23833-00	.NUT 1	2				
25	JX4-23841-00	.JOINT, UNIVERSAL 1	2				
26	JX4-23445-00	.BUSH	6				
27	JX4-23417-00	.COLLAR	3				



JX41010-D130

FIG. 4 STEERING

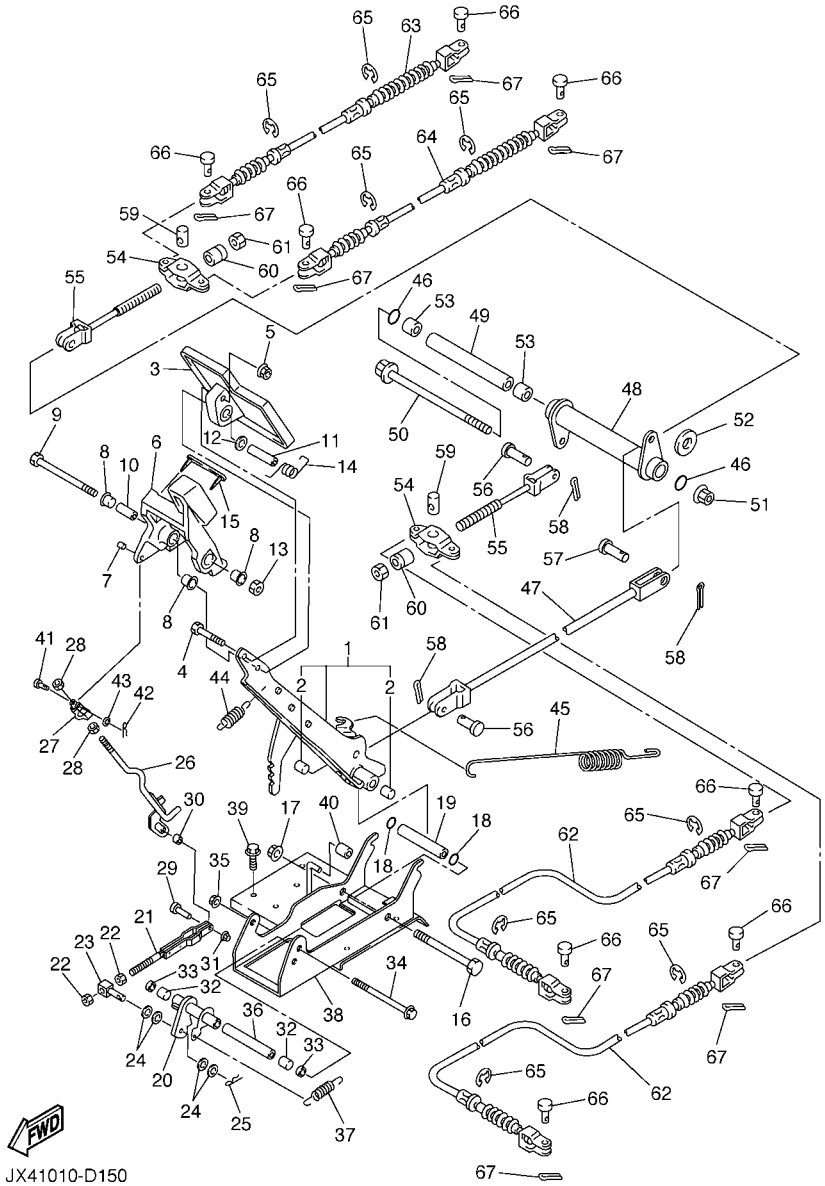
REF. NO.	PART NO.	DESCRIPTION	JX51				REMARKS
28	JR9-23823-00	JOINT 2	1				
29	JX4-23876-00	BOLT	1				
30	JX4-23427-00	WASHER	1				
31	90105-10030	BOLT, FLANGE	3				
32	90201-105A2	WASHER, PLATE	3				
33	90171-12039	NUT, CASTLE	2				
34	91401-25020	PIN, COTTER	2				
35	JX4-23876-00	BOLT	1				
36	JX4-23427-00	WASHER	1				
37	JN5-78357-00	HOLDER 1	1				
38	JN5-77762-10	LABEL, WARNING 2	1				UR FOR SEA
	JX5-77762-00	LABEL, WARNING 2	1				UR FOR KOR
39	JX4-78358-00	HOLDER 2	1				
40	97707-40525	SCREW, TAPPING	2				
41	90201-044H9	WASHER, PLATE	2				
42	90502-10013	SPRING, CONICAL	2				
43	90387-046N7	COLLAR	2				



JX41010-D150

FIG. 5 BRAKE

REF. NO.	PART NO.	DESCRIPTION	JX51				REMARKS
1	JT0-27250-00	BRAKE ARM COMP.	1				
2	90384-14080	.BUSH, BIMETAL FORMED	2				
3	JN5-27211-00	PEDAL, BRAKE	1				
4	97027-06035	BOLT	1				
5	90179-07564	NUT	1				
6	JN5-25671-00	PEDAL, PARKING BRAKE	1				
7	90384-05163	BUSH, BIMETAL FORMED	1				
8	90387-12009	COLLAR	3				
9	97027-08100	BOLT	1				
10	90387-08013	COLLAR	1				
11	90387-08014	COLLAR	1				
12	92907-08200	WASHER	1				
13	95307-08600	NUT	1				
14	90508-32015	SPRING, TORSION	1				
15	J17-25672-01	PAD, PARKING PEDAL	1				
16	90101-10793	BOLT	1				
17	90185-10115	NUT, SELF-LOCKING	1				
18	93210-132A8	O-RING	2				
19	90387-1015D	COLLAR	1				
20	JT0-27207-00	BRAKE LEVER COMP.	1				
21	JT0-27224-00	BAR, PEDAL LINK	1				
22	95307-08600	NUT	2				
23	JT0-27241-00	ROD, JOINT	1				
24	90202-08001	WASHER, PLATE	4				
25	90468-18189	CLIP	1				
26	JT0-27231-00	ROD, BRAKE	1				
27	JR7-27232-00	END, ROD 2	1				



JX41010-D150

FIG. 5 BRAKE

REF. NO.	PART NO.	DESCRIPTION	JX51				REMARKS
28	95307-08700	NUT	2				
29	JT0-27234-00	PIN, BRAKE ROD	1				
30	90387-05002	COLLAR	1				
31	90183-05009	NUT, SPRING	1				
32	90380-10001	BUSH, SOLID	2				
33	J17-27221-00	SEAL, SHAFT	2				
34	95827-06085	BOLT, FLANGE	1				
35	95707-06500	NUT, FLANGE	1				
36	90387-06012	COLLAR	1				
37	90506-10001	SPRING, TENSION	1				
38	JX5-27275-00	PLATE	1				
39	95807-08020	BOLT, FLANGE	4				
40	J17-25673-00	DAMPER, BRAKE	1				
41	J17-27228-00	PIN, JOINT	1				
42	99002-04600	CIRCLIP	1				
43	92907-05600	WASHER, PLATE	1				
44	90506-12520	SPRING, TENSION	1				
45	90506-29003	SPRING, TENSION	1				
46	93210-132A8	O-RING	2				
47	JX4-2633G-00	ROD	1				
48	JX4-27215-00	LINK	1				
49	90387-10027	COLLAR	1				
50	90105-10117	BOLT, WASHER BASED	1				
51	90185-10115	NUT, SELF-LOCKING	1				
52	90201-10626	WASHER, PLATE	1				
53	90384-14080	BUSH, BIMETAL FORMED	2				
54	J10-25681-00	EQUALIZER, BRAKE	2				

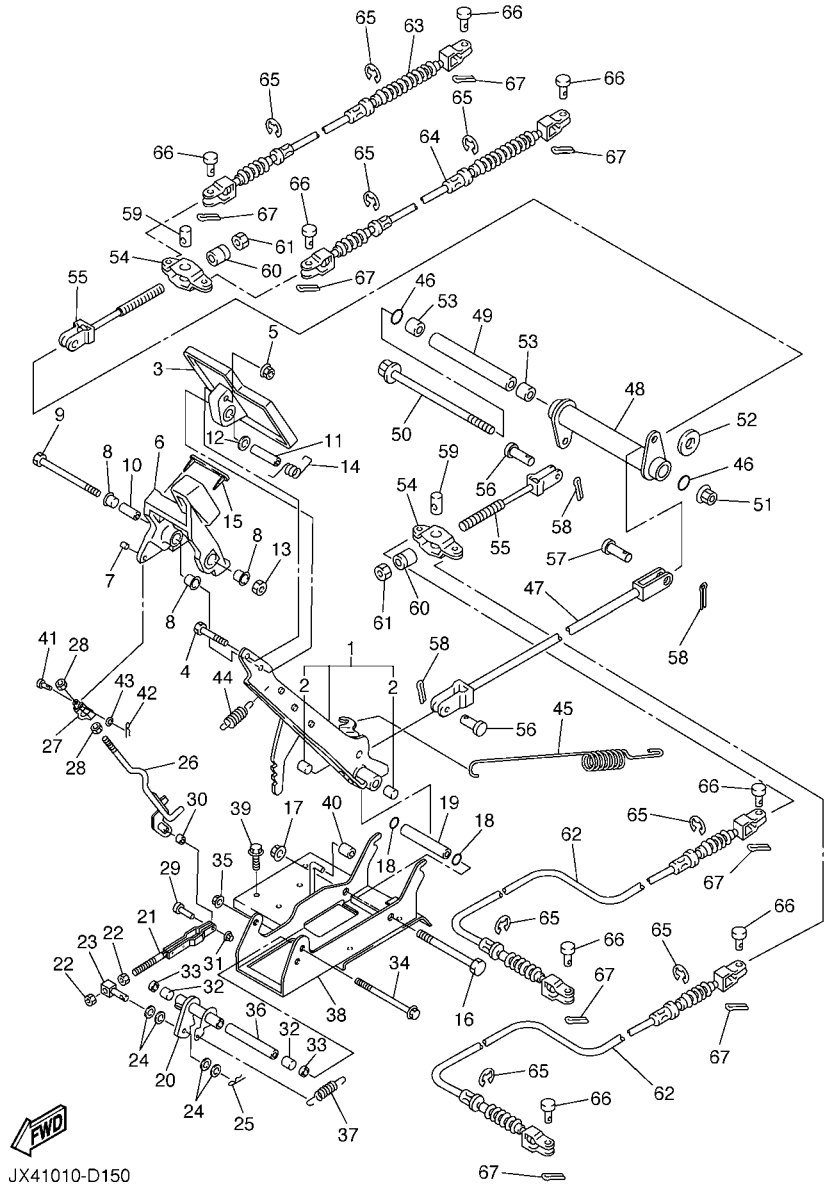
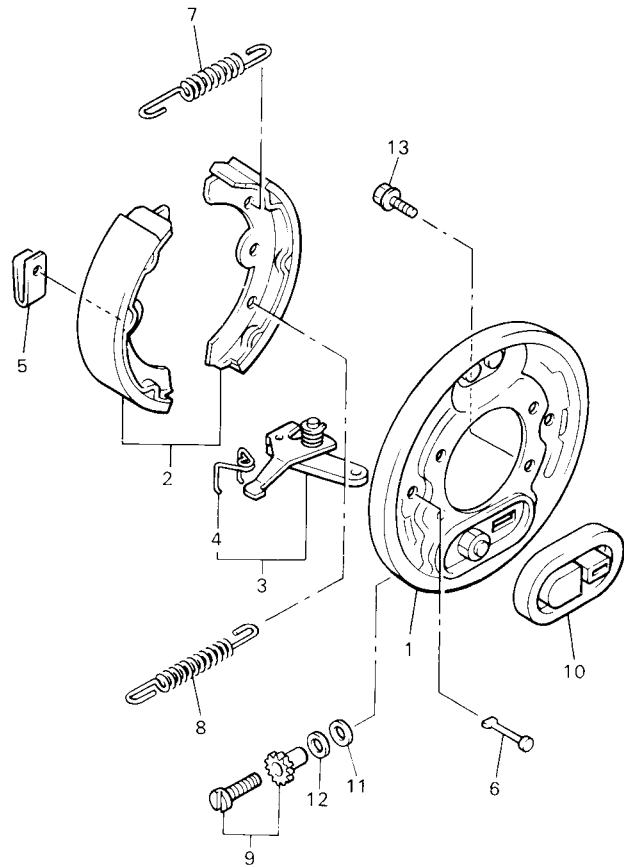


FIG. 5 BRAKE

REF. NO.	PART NO.	DESCRIPTION	JX51				REMARKS
55	JX4-25685-00	ROD	2				
56	91701-10022	PIN, CLEVIS	2				
57	91701-10028	PIN, CLEVIS	1				
58	91490-25020	PIN, COTTER	3				
59	90249-14129	PIN	2				
60	90179-08261	NUT	2				
61	95307-08700	NUT	2				
62	JX4-26341-00	CABLE, BRAKE	2				
63	JX5-26351-00	CABLE, BRAKE	1				
64	JX4-26361-00	CABLE, BRAKE	1				
65	99001-09600	CIRCLIP	8				
66	91701-08018	PIN, CLEVIS	8				
67	91490-25020	PIN, COTTER	8				

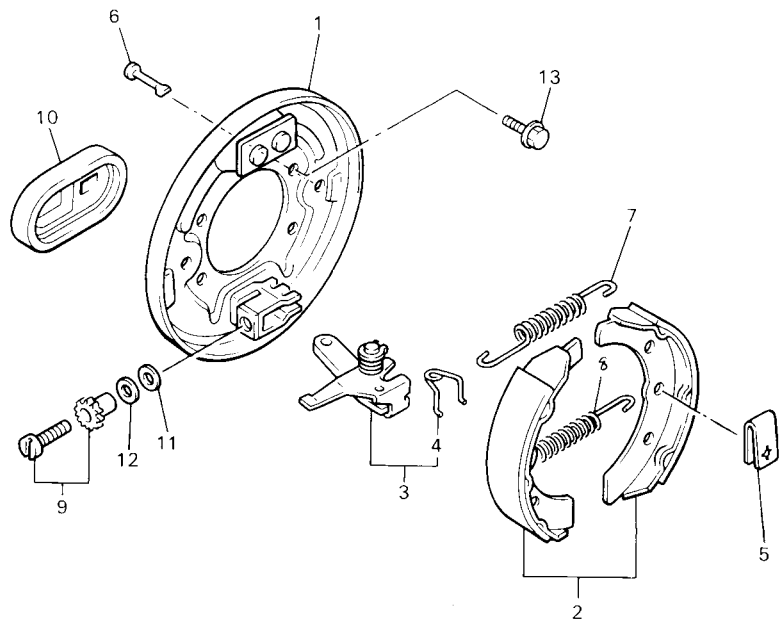


JN7010-6170

FIG. 6 BRAKE 2

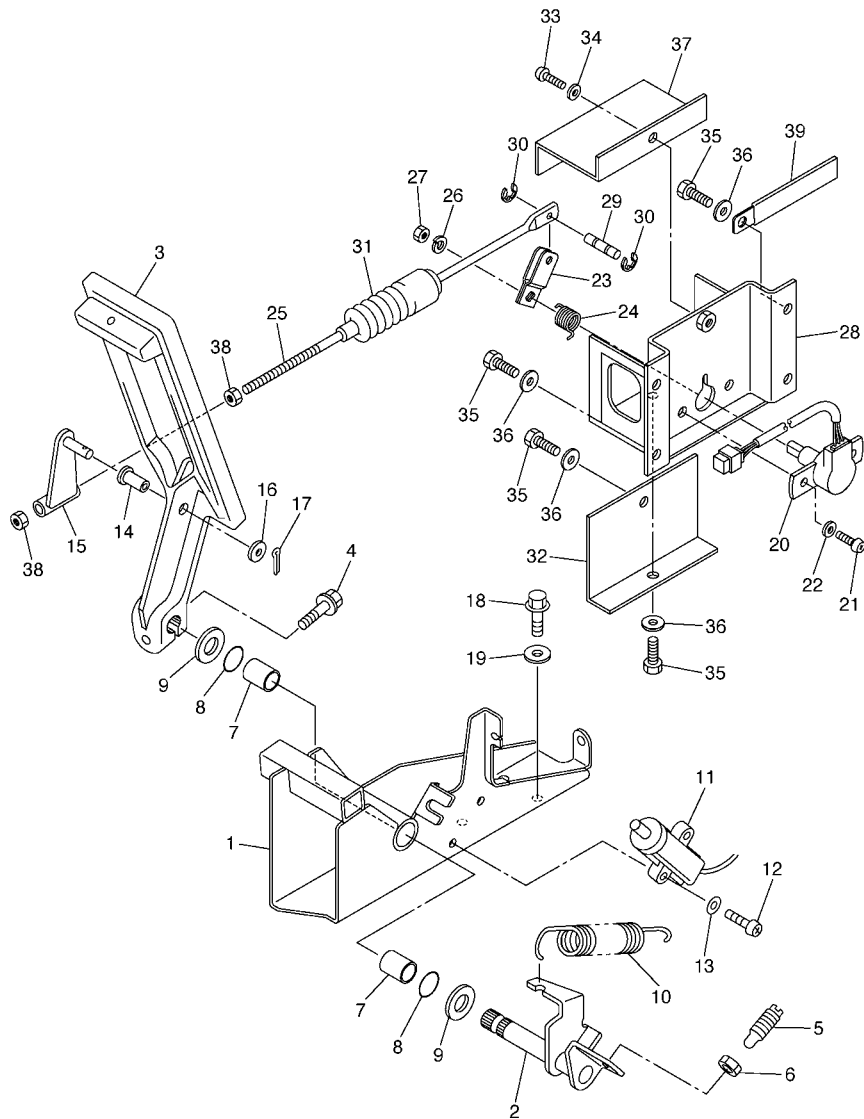
REF. NO.	PART NO.	DESCRIPTION	JX51				REMARKS
1	JH2-27208-01	BACKING PLATE SUB ASSY 1	2				FRONT(R),REAR(L)
2	JX4-W2536-00	BRAKE SHOE SET	2				
3	J38-27204-00	LEVER ASSY 1	2				
4	J55-25358-00	.SPRING, RETURN	1				
5	J10-27281-00	SPRING, SHOE CLAMP	4				
6	J10-27282-00	PIN, SHOE HOLD DOWN	4				
7	90506-20281	SPRING, TENSION	2				
8	90506-14001	SPRING, TENSION	2				
9	J55-27270-00	ADJUSTER ASSY	2				
10	J10-27286-00	COVER, DUST	2				
11	90201-121H8	WASHER, PLATE	2				
12	90201-121H9	WASHER, PLATE	2				
13	90105-082A0	BOLT, FLANGE	8				

FIG. 7 BRAKE 3



JN7010-6160

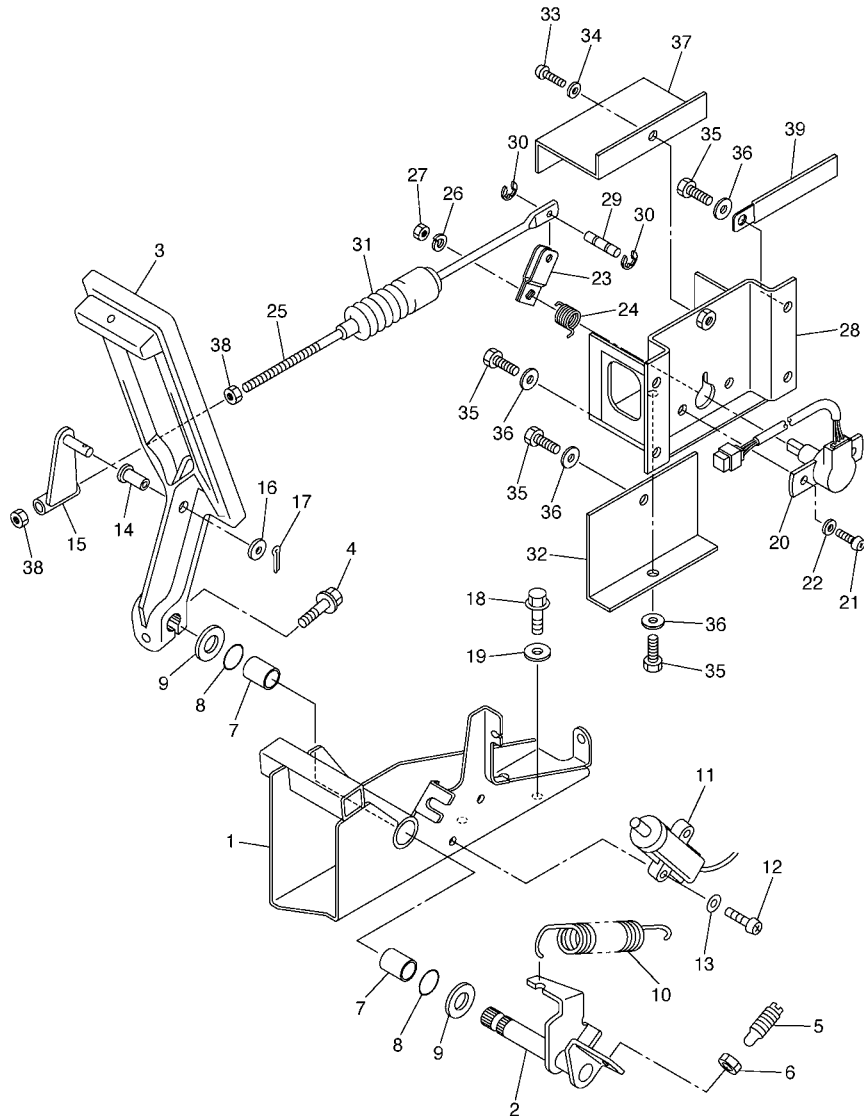
REF. NO.	PART NO.	DESCRIPTION	JX51				REMARKS
1	JH2-27209-01	BACKING PLATE SUB ASSY 2	2				FRONT(L),REAR(R)
2	JX4-W2536-00	BRAKE SHOE SET	2				
3	J38-27205-00	LEVER ASSY 2	2				
4	J55-25357-00	.SPRING, LEVER RETURN	1				
5	J10-27281-00	SPRING, SHOE CLAMP	4				
6	J10-27282-00	PIN, SHOE HOLD DOWN	4				
7	90506-20281	SPRING, TENSION	2				
8	90506-14001	SPRING, TENSION	2				
9	J55-27260-00	ADJUSTER ASSY	2				
10	J10-27286-00	COVER, DUST	2				
11	90201-121H8	WASHER, PLATE	2				
12	90201-121H9	WASHER, PLATE	2				
13	90105-082A0	BOLT, FLANGE	8				



JX51010-E080

FIG. 8 ACCELERATOR

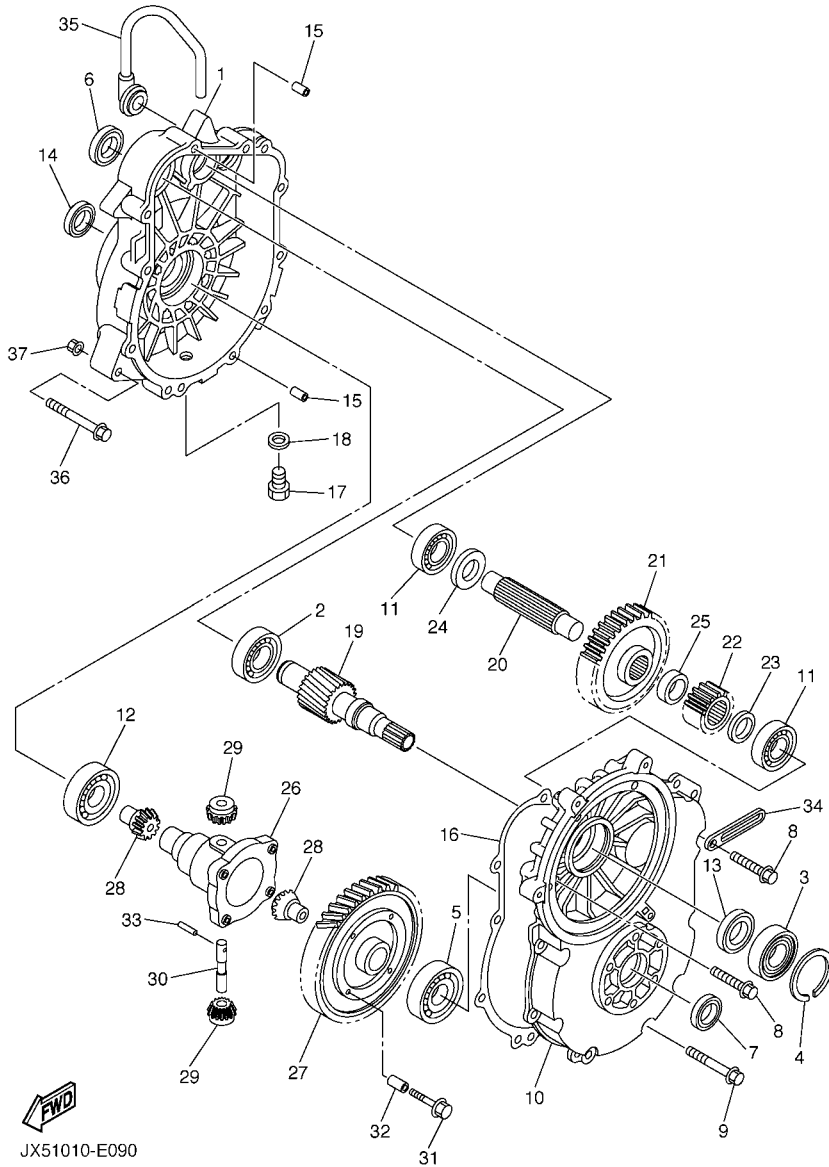
REF. NO.	PART NO.	DESCRIPTION	JX51				REMARKS
1	JX4-27874-00	BRACKET, ACCELERATOR PEDAL	1				
2	JX5-2784A-00	PEDAL SHAFT ASSY	1				
3	J14-27871-00	PEDAL, ACCELERATOR	1				
4	95807-06025	BOLT, FLANGE	1				
5	JT0-27247-00	ROD 1	1				
6	95307-08700	NUT	1				
7	90384-14080	BUSH, BIMETAL FORMED	2				
8	93210-14104	O-RING	2				
9	90201-142M6	WASHER, PLATE	2				
10	90506-26282	SPRING, TENSION	1				
11	JF7-82817-20	SWITCH	1				
12	98507-05025	SCREW, PAN HEAD	2				
13	92907-05600	WASHER, PLATE	2				
14	90381-06033	BUSH, SOLID	1				
15	J14-27815-00	LEVER, CRANK PEDAL	1				
16	92907-06600	WASHER, PLATE	1				
17	91401-20012	PIN, COTTER	1				
18	97007-08016	BOLT	3				
19	92907-08600	WASHER, PLATE	3				
20	JN9-85885-00	THROTTLE SENSOR ASSY	1				
21	98507-05016	SCREW, PAN HEAD	2				
22	92907-05600	WASHER, PLATE	2				
23	JR9-2625H-00	ARM, THROTTLE	1				
24	JF3-27825-00	SPRING, RETURN	1				
25	JR9-27241-00	ROD, JOINT	1				
26	92907-06100	WASHER, SPRING	1				
27	95307-06600	NUT	1				



JX51010-E080

FIG. 8 ACCELERATOR

REF. NO.	PART NO.	DESCRIPTION	JX51				REMARKS
28	JR9-27981-00	BRACKET, THROTTLE	1				
29	JF3-27813-00	PIN, PEDAL CRANK	1				
30	99001-04600	CIRCLIP	2				
31	JF3-27486-00	COVER 1	1				
32	JN9-27487-00	COVER 2	1				
33	98507-05016	SCREW, PAN HEAD	1				
34	92907-05600	WASHER, PLATE	1				
35	97007-05012	BOLT	6				
36	92907-05600	WASHER, PLATE	6				
37	JR9-27445-00	PLATE 1	1				
38	95307-08700	NUT	2				
39	90462-10236	CLAMP	1				



JX51010-E090

FIG. 9 TRANSAXLE

REF. NO.	PART NO.	DESCRIPTION	JX51				REMARKS
1	JX5-46311-00	CASE, TRANSMISSION 1	1				
2	93306-20501	BEARING	1				
3	93306-205A7	BEARING	1				
4	99009-52500	CIRCLIP	1				
5	93306-00803	BEARING	1				
6	93102-25017	OIL SEAL	1				
7	93102-25360	OIL SEAL	1				
8	95827-08040	BOLT, FLANGE	8				
9	95827-08050	BOLT, FLANGE	2				
10	JX5-46312-00	CASE, TRANSMISSION 2	1				
11	93306-20401	BEARING	2				
12	93306-00803	BEARING	1				
13	93102-32008	OIL SEAL	1				
14	93102-25360	OIL SEAL	1				
15	99530-12016	PIN, DOWEL	2				
16	JX3-46319-00	GASKET	1				
17	90340-14036	PLUG, STRAIGHT SCREW	1				
18	90430-14043	GASKET	1				
19	JX5-46321-01	SHAFT, INPUT	1				
20	JT2-46351-00	SHAFT, COUNTER	1				
21	JX5-46361-01	GEAR, COUNTER 1	1				
22	JT2-46362-00	GEAR, COUNTER 2	1				
23	90201-20272	WASHER, PLATE	1				
24	90201-207J5	WASHER, PLATE	1				
25	90387-252M8	COLLAR	1				
26	JX4-46411-00	CASE, DIFFERENTIAL	1				
27	JX3-46421-00	GEAR, RING	1				

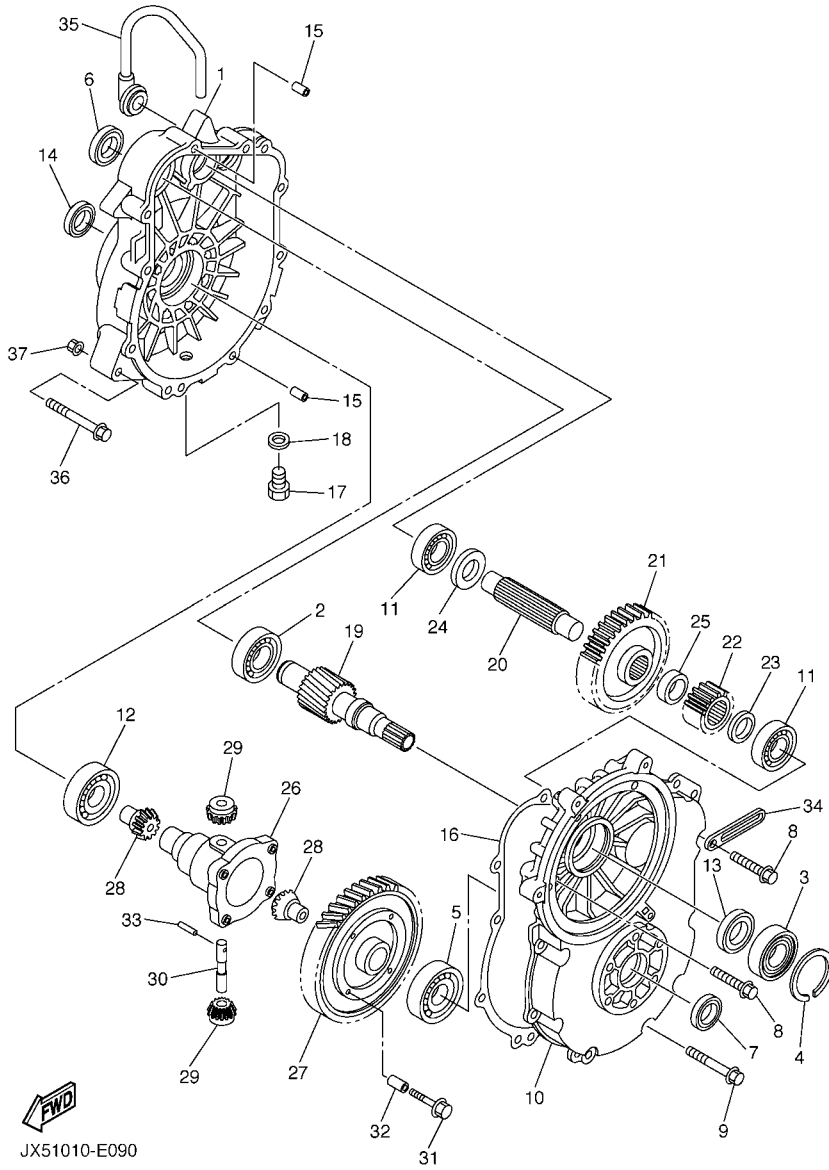
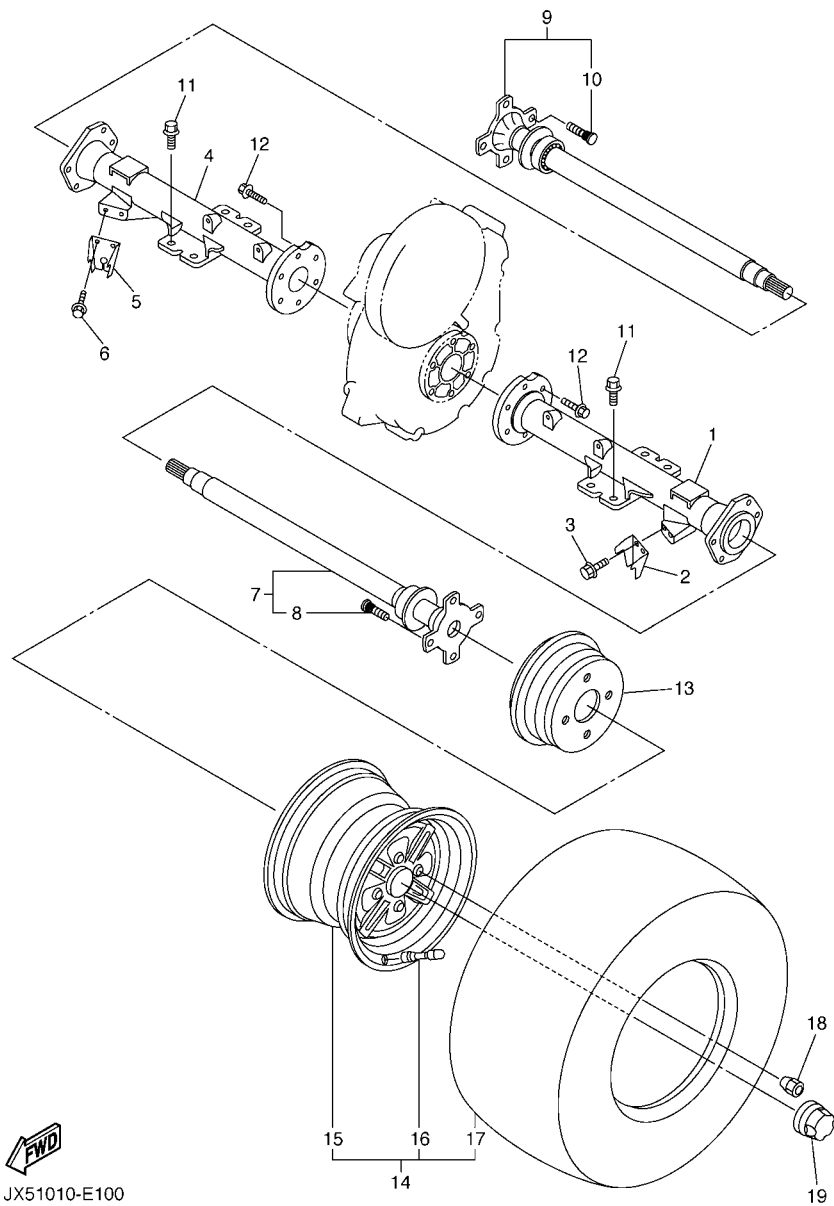


FIG. 9 TRANSAXLE

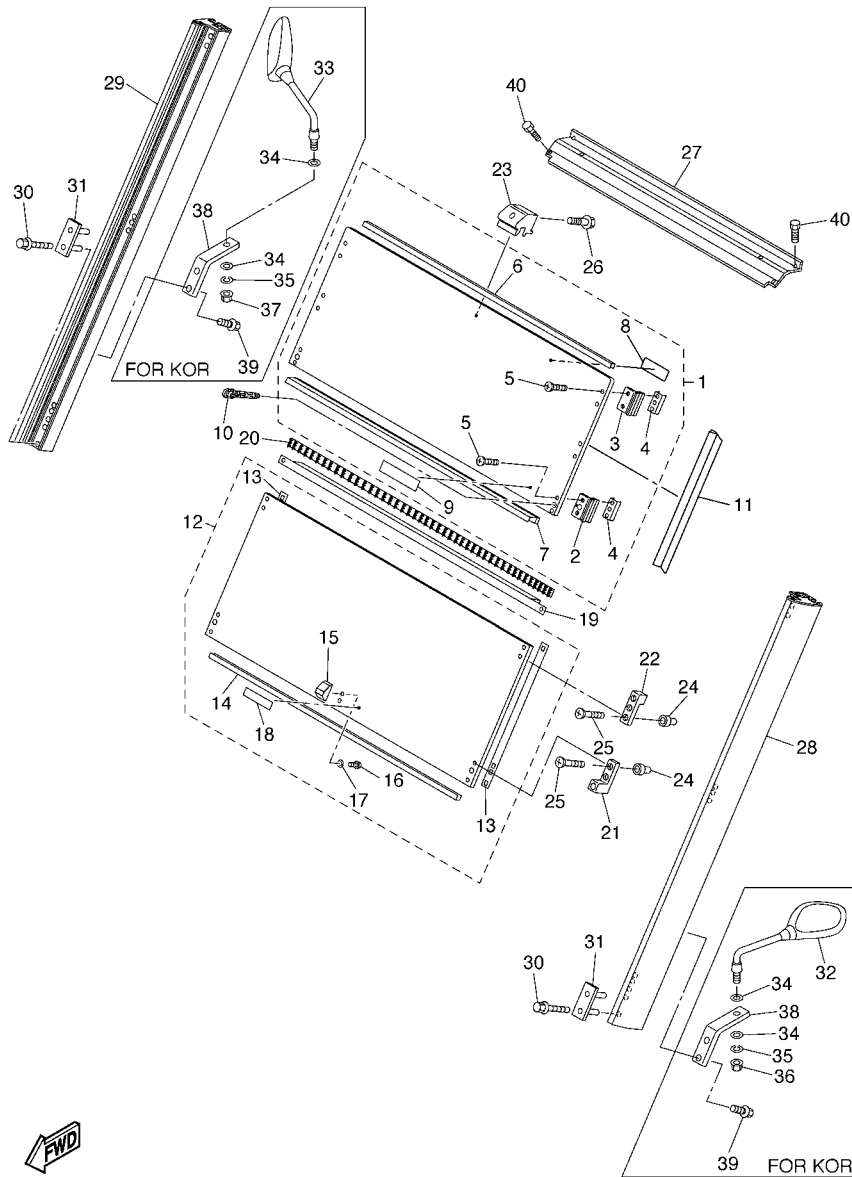
REF. NO.	PART NO.	DESCRIPTION	JX51				REMARKS
28	JX4-46414-00	GEAR, DIFFERENTIAL SIDE	2				
29	JX4-46415-00	PINION, DIFFERENTIAL	2				
30	J38-46417-02	PIN, DIFFERENTIAL	1				
31	90105-10124	BOLT, FLANGE	4				
32	99530-14016	PIN, DOWEL	2				
33	91609-40040	PIN, SPRING	1				
34	90462-08007	CLAMP	1				
35	JN3-47559-00	CAP 2	1				
36	95817-08075	BOLT, FLANGE	1				
37	90179-08491	NUT	1				



JX51010-E100

FIG. 10 REAR AXLE & WHEEL

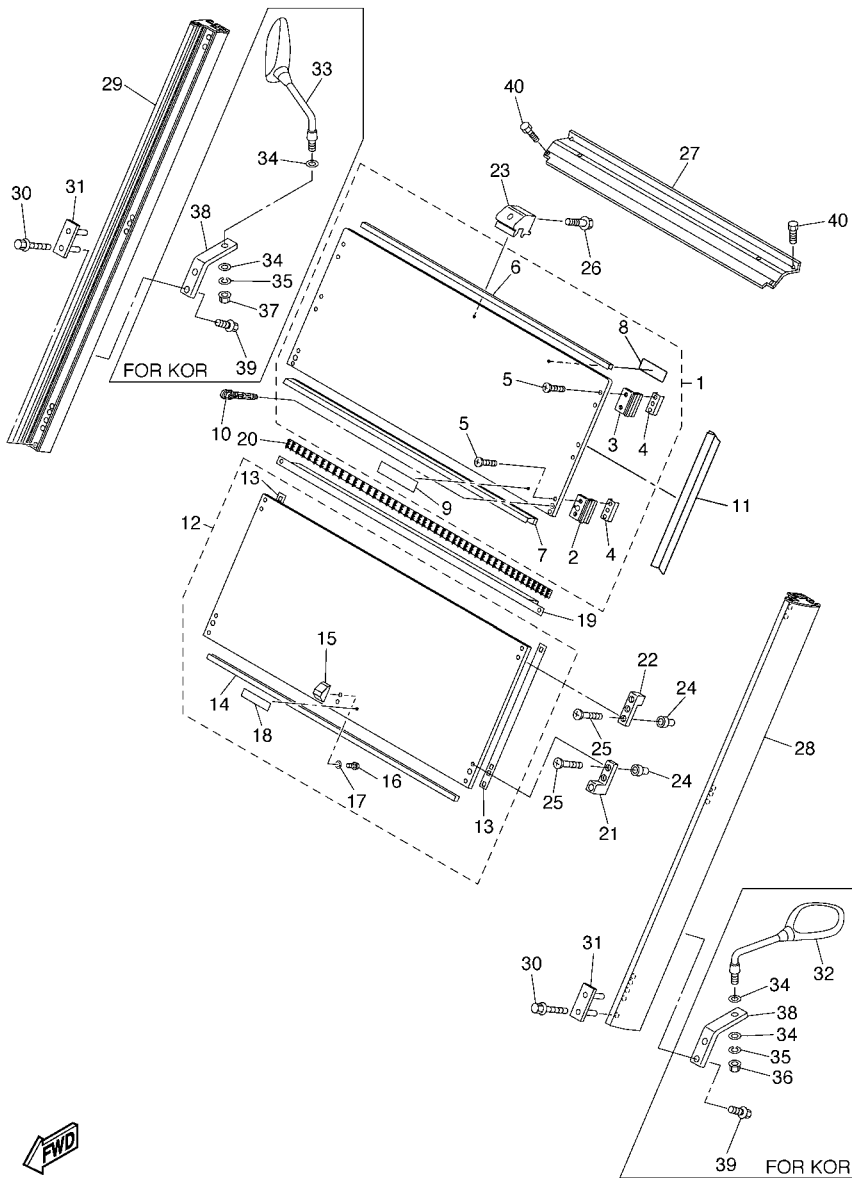
REF. NO.	PART NO.	DESCRIPTION	JX51				REMARKS
1	JX5-46541-00	HSG. , RR. AXLE 1	1				
2	JX4-27254-00	HOOK	1				
3	95817-06020	BOLT, FLANGE	2				
4	JX5-46551-00	HOUSING, REAR AXLE 2	1				
5	JX4-27254-00	HOOK	1				
6	95817-06020	BOLT, FLANGE	2				
7	JX5-46510-00	REAR AXLE SHAFT COMP.	1				
8	90114-10003	.BOLT, SERRATION	4				
9	JX5-46520-00	REAR AXLE SHAFT COMP. 2	1				
10	90114-10003	.BOLT, SERRATION	4				
11	95817-10025	BOLT, FLANGE	8				
12	95817-10030	BOLT, FLANGE	12				
13	JX4-46521-00	DRUM	2				
14	JX4-25100-00	WHEEL ASSY	2				
15	JX4-25180-00	.WHEEL COMP.	1				
16	93900-00022	.VALVE, RIM (TR413)	1				TAIHEIYO
17	JX4-2510S-00	.TIRE (190/50-12-4PR A520)	1				
18	90179-10540	NUT	8				
19	5GT-2512A-00	CAP, WHEEL	2				



JX51400-E110

FIG. 11 WINDSHIELD

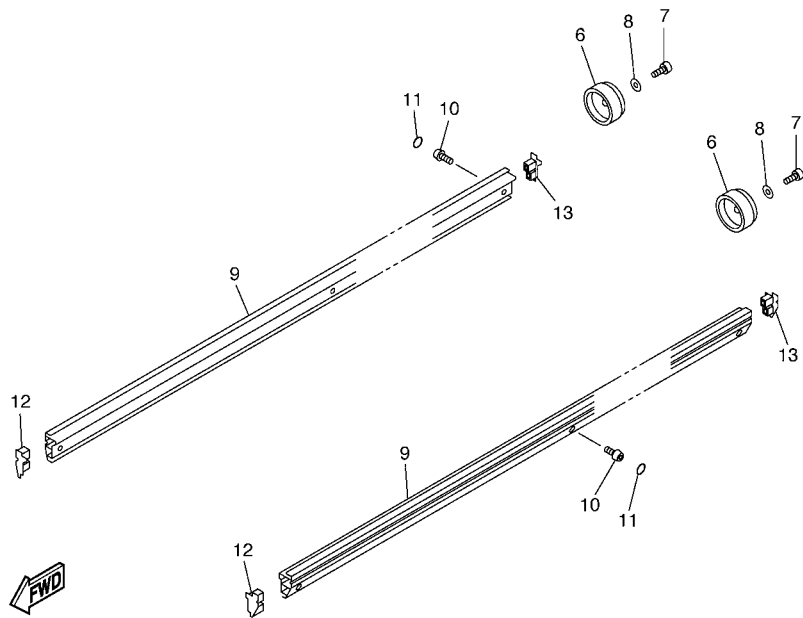
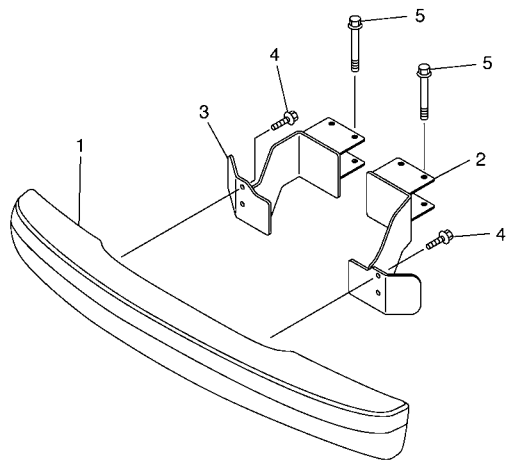
REF. NO.	PART NO.	DESCRIPTION	JX51			REMARKS
1	JX3-77201-11	UPPER WINDSHIELD ASSY	1			UR FOR KOR
	JX4-77201-11	UPPER WINDSHIELD ASSY	1			UR FOR SEA
2	JX4-77261-00	.LINING, SHROUD 1	2			
3	JX4-77262-00	.LINING, SHROUD 2	2			
4	JX4-77217-00	.NUT, WIND SHIELD	4			
5	98780-06014	.SCREW, FLAT HEAD	8			
6	JX4-77216-00	.TRIM 4	1			
7	JX4-77225-00	.TRIM 5	1			
8	JN5-77768-10	.LABEL, WARNING	1			FOR SEA
9	JX4-77767-10	.LABEL, WARNING 7	1			FOR SEA
10	JX4-77212-00	BOLT, WIND SHIELD	2			
11	JX4-77233-01	TRIM, 7	2			
12	JX4-77202-31	LOWER WINDSHIELD ASSY	1			UR FOR KOR
	JX4-77202-11	LOWER WINDSHIELD ASSY	1			UR FOR SEA
13	JX4-77282-01	.STRIPE 2	2			
14	JX4-77216-00	.TRIM 4	1			
15	JX4-77274-00	.DAMPER, NOISE 14	1			
16	97707-40508	.SCREW, TAPPING	2			
17	90201-043H5	.WASHER, PLATE	2			
18	JX4-77768-20	.LABEL, WARNING	1			UR FOR KOR
	JX4-77768-10	.LABEL, WARNING	1			UR FOR SEA
19	JX4-77222-00	BRACKET, WINDSHIELD	1			
20	JX4-77238-00	DAMPER	1			
21	JX4-77271-00	DAMPER, NOISE 11	2			
22	JX4-77272-00	DAMPER, NOISE 12	2			
23	JX4-77275-01	DAMPER, NOISE 15	1			
24	90179-06020	NUT	8			



JX51400-E110

FIG. 11 WINDSHIELD

REF. NO.	PART NO.	DESCRIPTION	JX51			REMARKS
25	98780-06035	SCREW, FLAT HEAD	8			
26	95880-06020	BOLT, FLANGE	1			
27	JX4-78392-10	MEMBER, ROOF FRAME	1			
28	JX4-7830A-30	ROOF SUPPORT ASSY 1	1			UR FOR KOR
	JX4-7830A-10	ROOF SUPPORT ASSY 1	1			UR FOR SEA
29	JX4-7830B-30	ROOF SUPPORT ASSY 2	1			UR FOR KOR
	JX4-7830B-10	ROOF SUPPORT ASSY 2	1			UR FOR SEA
30	95817-08055	BOLT, FLANGE	4			
31	JX4-7831L-00	REINFORCEMENT, ROOF SUPPORT 1	2			
32	3YK-26280-00	REAR VIEW MIRROR ASSY (LEFT)	1			
33	3YK-26290-00	REAR VIEW MIRROR ASSY (RIGHT)	1			
34	92907-08200	WASHER	4			
35	92907-08100	WASHER, SPRING	2			
36	95707-08500	NUT, FLANGE	1			
37	90179-08449	NUT	1			LEFT-HAND.THREAD
38	JX4-2629N-00	BRACKET, MIRROR 1	2			
39	95807-06020	BOLT, FLANGE	4			
40	95807-06020	BOLT, FLANGE	4			



JX41010-D250

FIG. 12 BUMPER

REF. NO.	PART NO.	DESCRIPTION	JX51				REMARKS
1	JX4-77510-00	FRONT BUMPER COMP.	1				
2	JX4-78164-00	STAY, FRONT BUMPER (L.H)	1				
3	JX4-78165-00	STAY, FRONT BUMPER (R.H)	1				
4	95827-06012	BOLT, FLANGE	4				
5	95827-08065	BOLT, FLANGE	4				
6	JX4-77520-00	BUMPER COMP 1	2				
7	98507-08025	SCREW, PAN HEAD	2				
8	92907-08600	WASHER, PLATE	2				
9	JX4-78183-00	PLATE, SIDE SILL	2				
10	92017-08016	BOLT, BUTTON HEAD	6				
11	JF7-77563-00	COVER, 3	6				
12	JX4-7818E-00	CAP, PROTECTOR END 1	2				
13	JX4-7818F-00	CAP, PROTECTOR END 2	2				

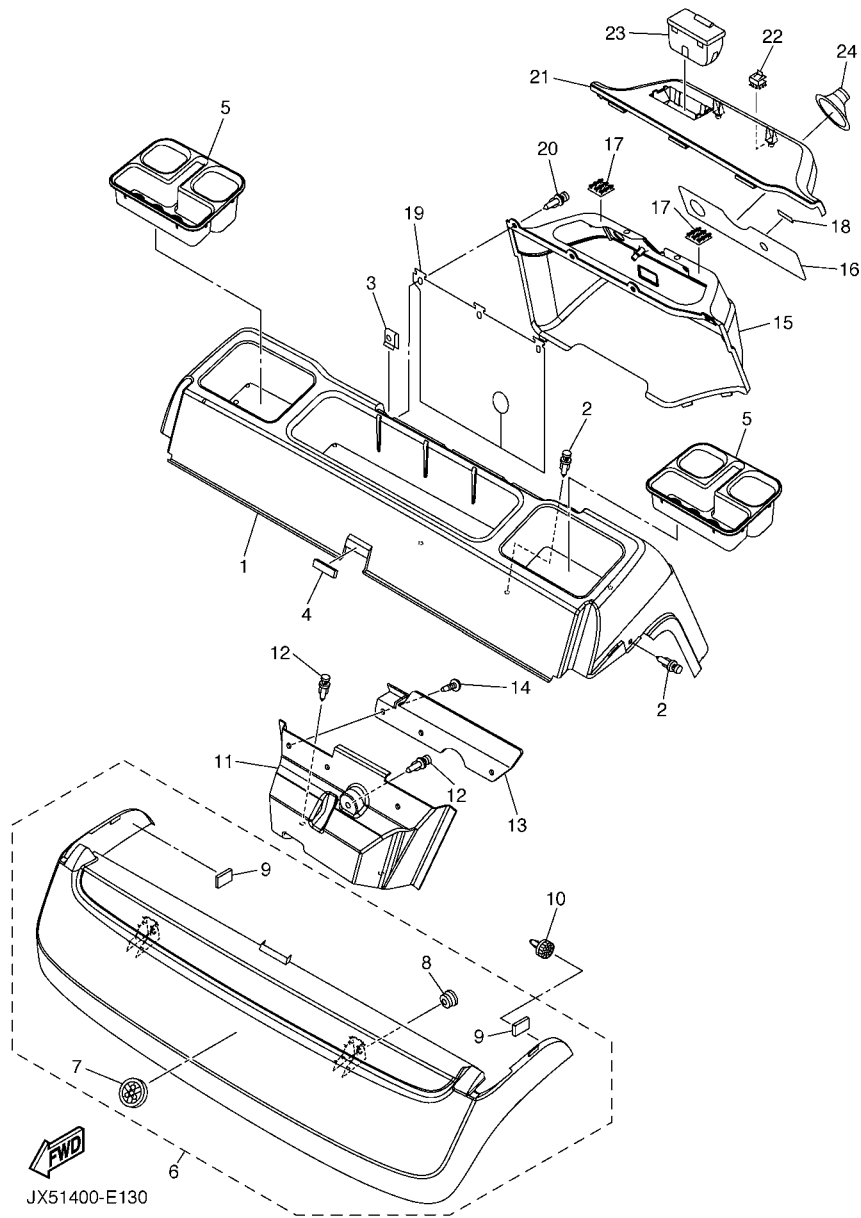


FIG. 13 BODY

REF. NO.	PART NO.	DESCRIPTION	JX51				REMARKS
1	JX4-78114-00	PANEL, FRONT	1				
2	90269-10005	RIVET	4				
3	JX4-7814H-00	HOOK, BODY LOCK	4				
4	JX4-78328-00	SPACER 1	1				
5	JX4-7835E-00	HOLDER, BEVERAGE	2				
6	JX4-78101-00	BODY SHELL PANEL SUB-ASSY 1	1				UR FOR RW
	JX4-78101-10	BODY SHELL PANEL SUB-ASSY 1	1				UR FOR VDGS1
	JX4-78101-20	BODY SHELL PANEL SUB-ASSY 1	1				UR FOR DRMD
	JX4-78101-30	BODY SHELL PANEL SUB-ASSY 1	1				UR FOR DPBMC
	JX4-78101-40	BODY SHELL PANEL SUB-ASSY 1	1				UR FOR OM1
7	8AC-2414B-01	.EMBLEM	1				
8	90480-13398	.GROMMET	2				
9	JX4-77188-00	.STOPPER	2				
10	JX4-77157-00	PIN, HINGE	2				
11	JX4-78113-02	PANEL, SIDE	1				
12	90269-10005	RIVET	3				
13	JX4-78119-01	PLATE 3	1				
14	90269-07064	RIVET	3				
15	JX5-77711-00	PANEL, INSTRUMENT	1				
16	JX6-77741-00	INDICATOR 1	1				
17	JX4-77118-00	STOPPER, SHROUD	2				
18	JX4-77458-00	LABEL, WARNING	1				
19	JX4-78181-00	PLATE 1	1				
20	90269-10005	RIVET	4				
21	JX4-78139-00	CAP, END	1				
22	JX4-77135-00	CLAMP 1	2				
23	JF7-78287-10	ASH TRAY	1				

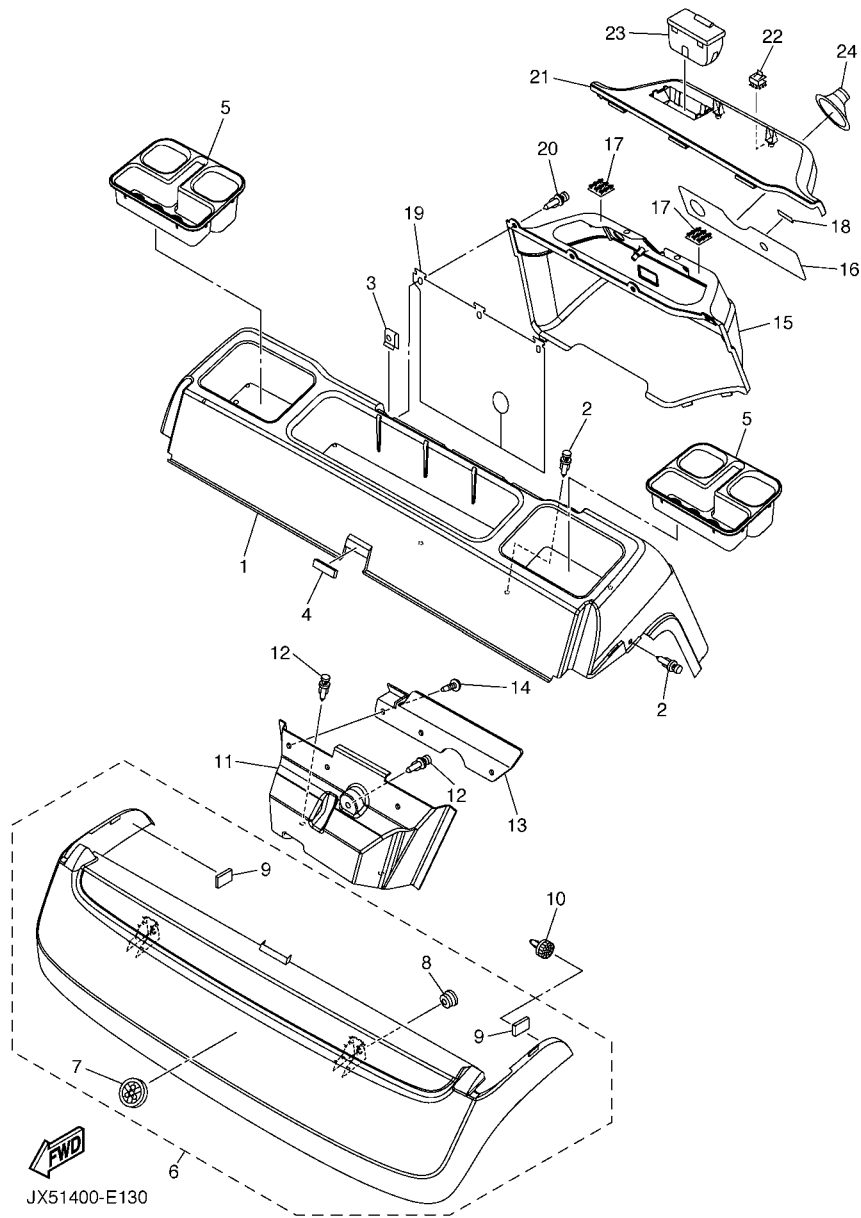


FIG. 13 BODY

REF. NO.	PART NO.	DESCRIPTION	JX51				REMARKS
24	JX4-78273-00	COVER, HOLE	1				

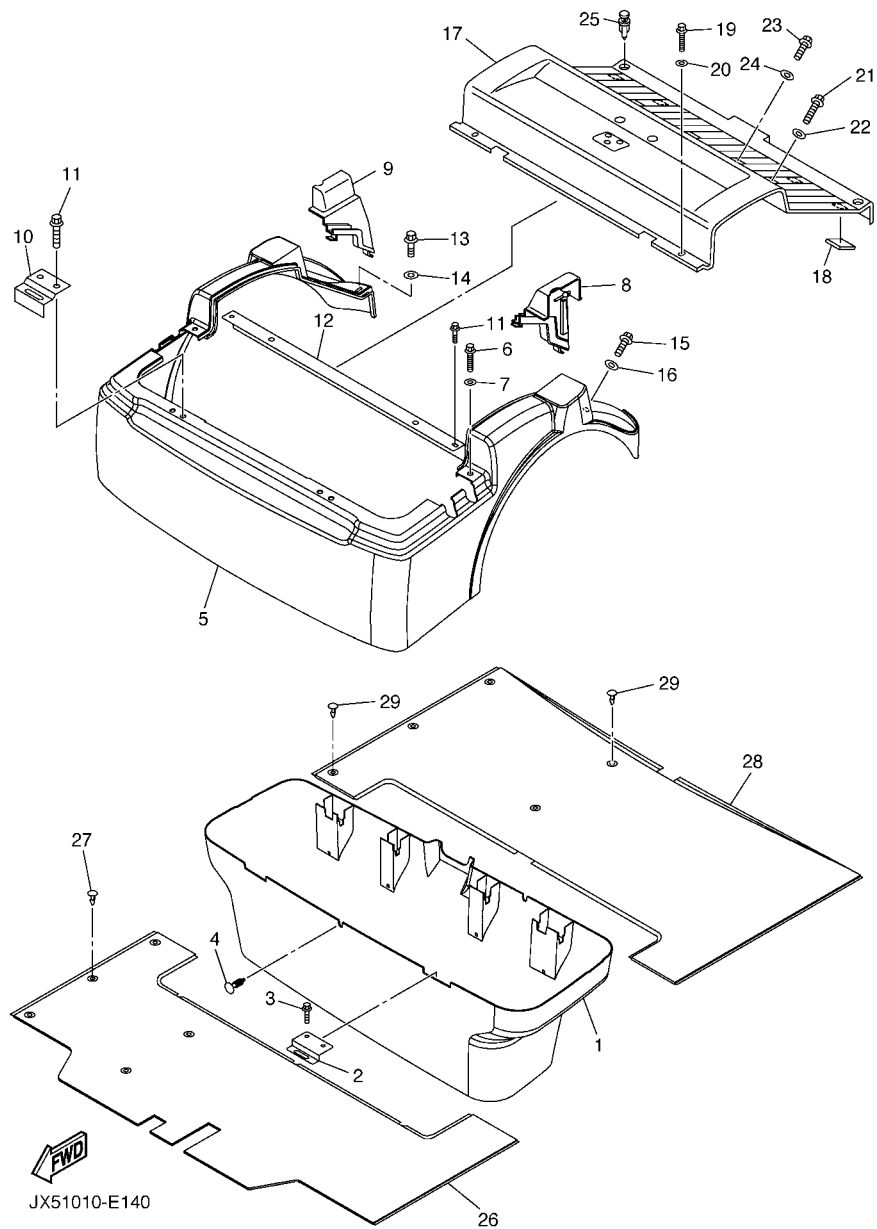


FIG. 14 BODY 2

REF. NO.	PART NO.	DESCRIPTION	JX51		REMARKS
1	JX3-78141-00	PANEL, INTERMEDIATE BODY	1		UR FOR RW
	JX3-78141-10	PANEL, INTERMEDIATE BODY	1		UR FOR VDGS1
	JX3-78141-20	PANEL, INTERMEDIATE BODY	1		UR FOR DRMD
	JX3-78141-30	PANEL, INTERMEDIATE BODY	1		UR FOR DPBMC
	JX3-78141-40	PANEL, INTERMEDIATE BODY	1		UR FOR OM1
2	JF7-78427-00	HINGE, SEAT 2	2		
3	95807-06030	BOLT, FLANGE	4		
4	90269-07064	RIVET	1		
5	JX4-78142-00	PANEL, REAR BODY	1		UR FOR RW
	JX4-78142-10	PANEL, REAR BODY	1		UR FOR VDGS1
	JX4-78142-20	PANEL, REAR BODY	1		UR FOR DRMD
	JX4-78142-30	PANEL, REAR BODY	1		UR FOR DPBMC
	JX4-78142-40	PANEL, REAR BODY	1		UR FOR OM1
6	95807-06040	BOLT, FLANGE	2		
7	90201-06008	WASHER, PLATE	2		
8	JX4-7832H-00	GROMMET, ROOF SUPPORT 3	1		
9	JX4-7833H-00	GROMMET, ROOF SUPPORT 4	1		
10	JX4-78427-00	HINGE, SEAT 2	2		
11	95807-06040	BOLT, FLANGE	6		
12	JX5-2254R-00	SUPPORT, BODY MOUNTING	1		
13	95880-06014	BOLT, FLANGE	2		
14	90201-06019	WASHER, PLATE	2		
15	95880-06020	BOLT, FLANGE	2		
16	90201-06019	WASHER, PLATE	2		
17	JX3-78150-00	INSPECTION LID ASSY	1		
18	JX4-7814E-00	SEAL, BODY SIDE 1	4		
19	95807-06040	BOLT, FLANGE	2		

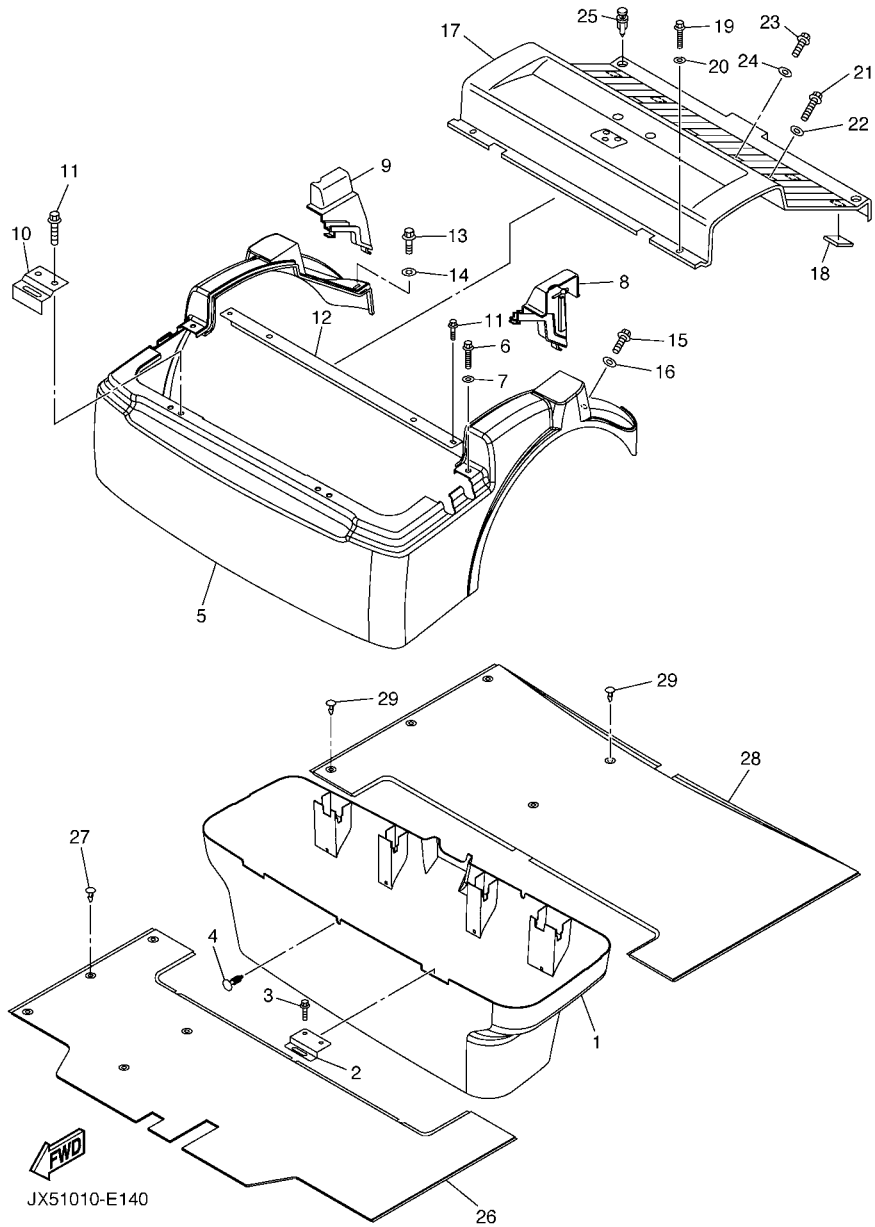
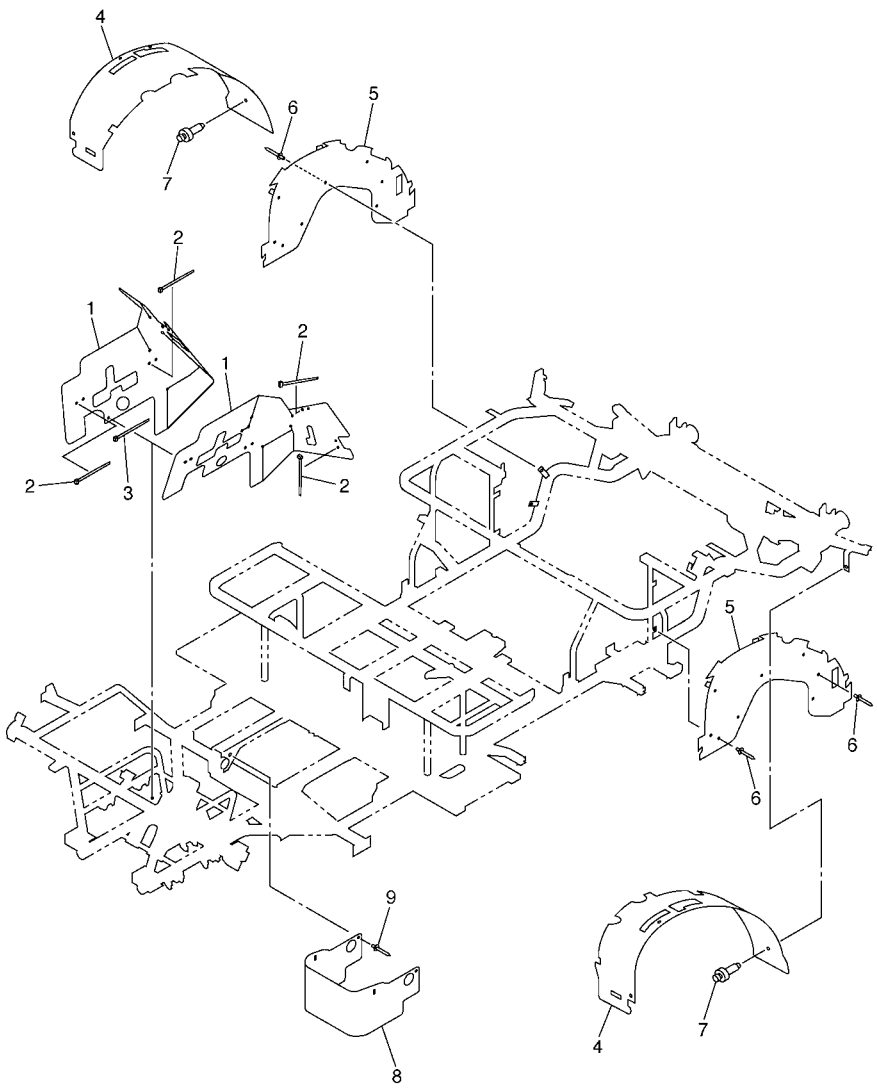


FIG. 14 BODY 2

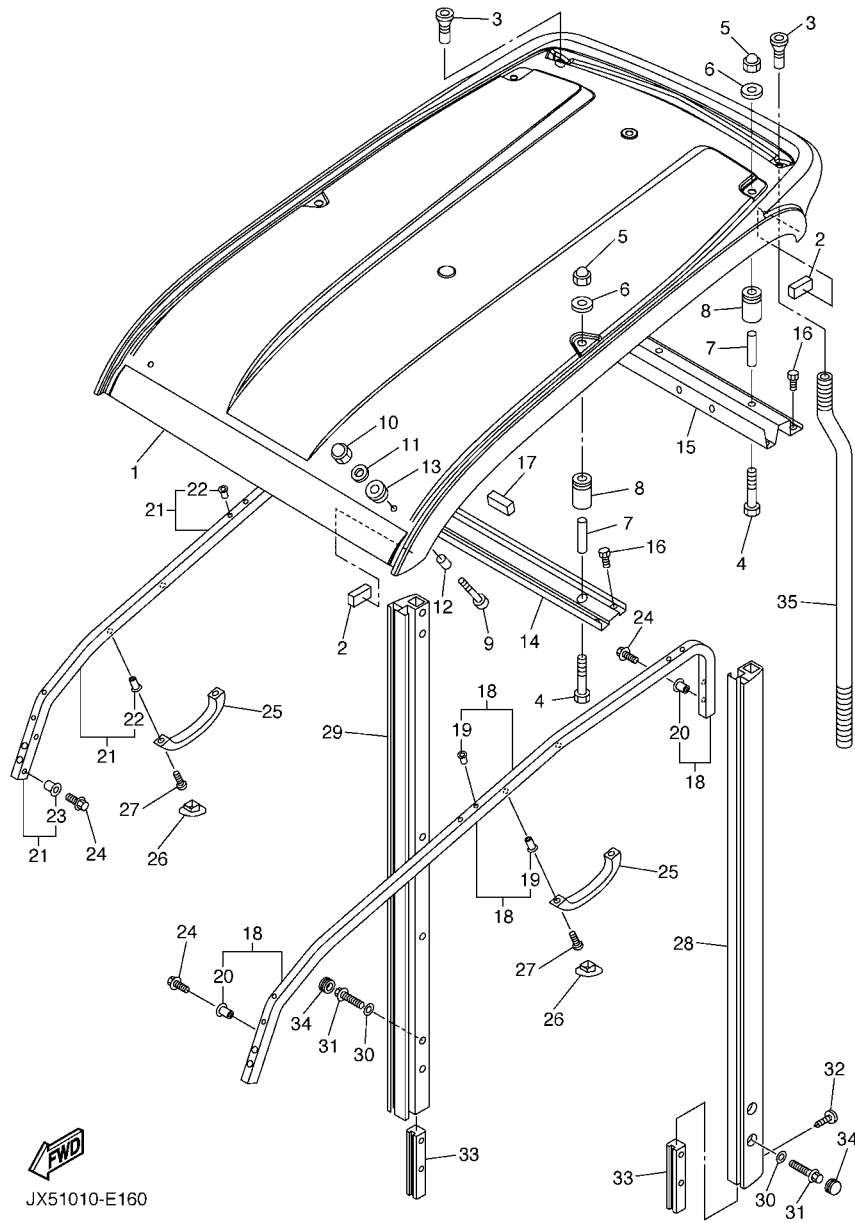
REF. NO.	PART NO.	DESCRIPTION	JX51			REMARKS
20	90201-06008	WASHER, PLATE	2			
21	95880-06035	BOLT, FLANGE	2			
22	90201-06019	WASHER, PLATE	2			
23	95880-06020	BOLT, FLANGE	2			
24	90201-06019	WASHER, PLATE	2			
25	90269-10005	RIVET	2			
26	JX4-78231-00	MAT, MAIN FLOOR 1	1			
27	90269-07064	RIVET	5			
28	JX4-78241-00	MAT, REAR FLOOR	1			
29	90269-07064	RIVET	5			

FIG. 15 BODY FITTING

REF. NO.	PART NO.	DESCRIPTION	JX51				REMARKS
1	JX4-78187-00	FLAP, FRONT FENDER	2				
2	90465-13152	CLAMP	10				
3	90465-13275	CLAMP	2				
4	JX4-78191-00	PANEL, REAR FENDER 1	2				
5	JX4-78192-00	PANEL, REAR FENDER 2	2				
6	90267-48101	RIVET, BLIND	18				
7	90269-10005	RIVET	4				
8	JX4-7819L-00	PANEL, FRONT FENDER 1	1				
9	90267-48101	RIVET, BLIND	2				



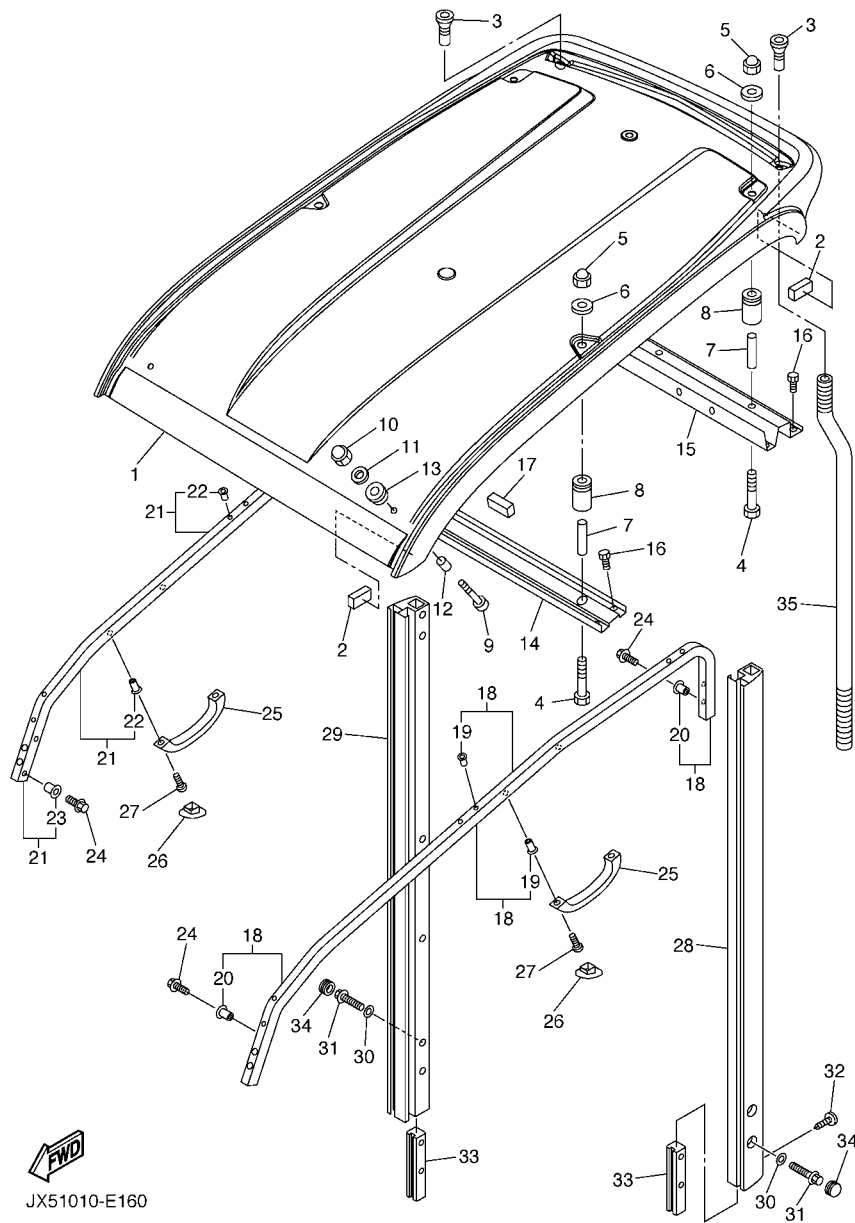
JX51010-E150



JX51010-E160

FIG. 16 SUN ROOF

REF. NO.	PART NO.	DESCRIPTION	JX51				REMARKS
1	JX4-78314-00	COVER, SUN ROOF	1				
2	JX4-78329-00	SPACER 2	4				
3	JX4-7832F-00	GROMMET, ROOF SUPPORT 1	2				
4	97080-06040	BOLT	5				
5	90185-06M05	NUT, SELF-LOCKING	5				
6	90201-06416	WASHER, PLATE	5				
7	90387-084X9	COLLAR	5				
8	90480-19631	GROMMET	5				
9	97080-06020	BOLT	2				
10	90185-06M05	NUT, SELF-LOCKING	2				
11	90201-06019	WASHER, PLATE	2				
12	90387-0602R	COLLAR	2				
13	90480-16629	GROMMET	2				
14	JX4-78393-00	MEMBER, ROOF FRAME 2	1				
15	JX4-78394-00	MEMBER, ROOF FRAME 3	1				
16	95807-06020	BOLT, FLANGE	8				
17	JX4-78316-00	DAMPER	1				
18	JX4-7830E-00	SUNROOF PIPE ASSY. , 1	1				
19	90179-06636	.NUT	8				
20	90179-06021	.NUT	4				
21	JX4-7830F-00	SUNROOF PIPE ASSY. , 2	1				
22	90179-06636	.NUT	10				
23	90179-06021	.NUT	4				
24	95880-06020	BOLT, FLANGE	8				
25	JF7-78214-00	GRIP, HAND	3				
26	J50-78274-10	COVER, HOLE 2	6				
27	90157-06068	SCREW, PAN HEAD	6				



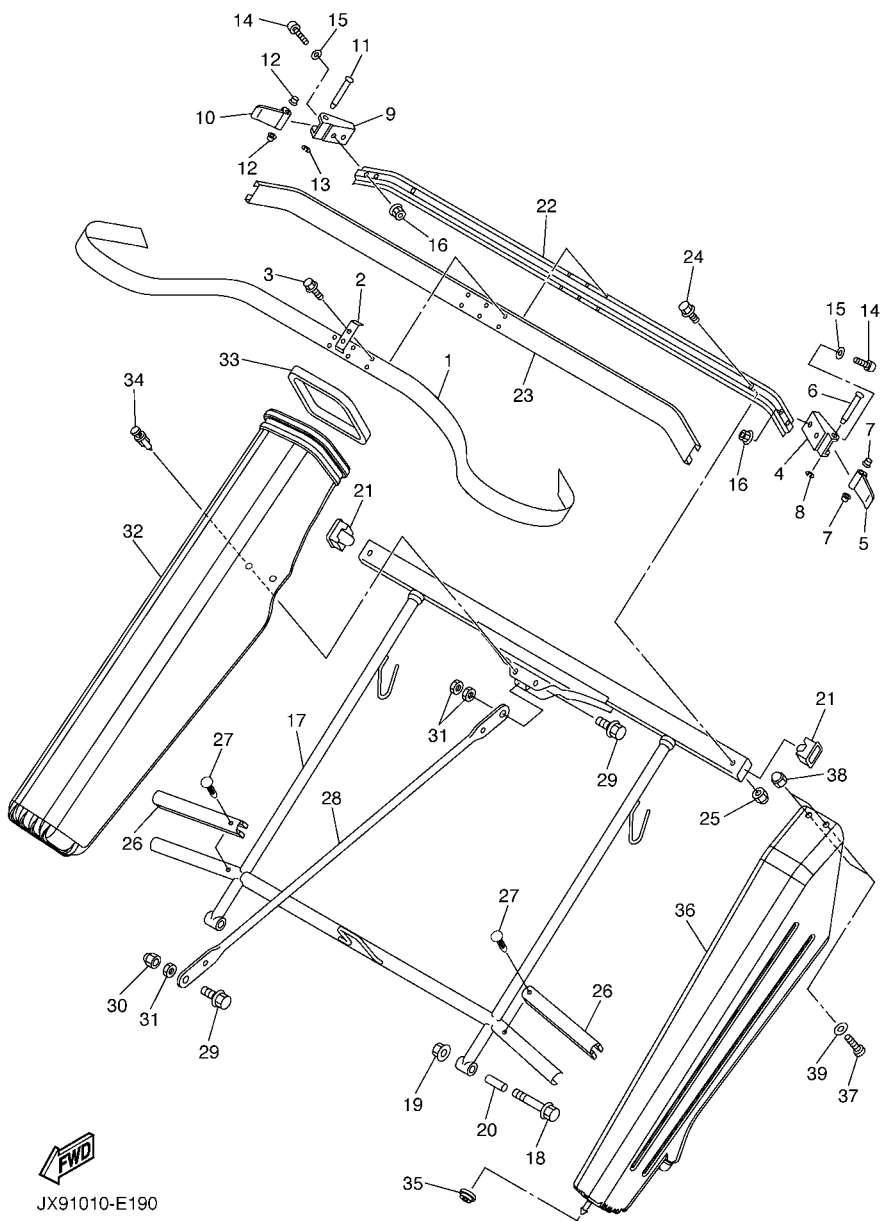
JX51010-E160

FIG. 16 SUN ROOF

REF. NO.	PART NO.	DESCRIPTION	JX51				REMARKS
28	JX4-7830C-00	ROOF SUPPORT ASSY. , 3	1				
29	JX4-7830D-00	ROOF SUPPORT ASSY. , 4	1				
30	90201-08730	WASHER, PLATE	4				
31	95817-08055	BOLT, FLANGE	4				
32	90269-06003	RIVET	2				
33	JX4-7831N-00	REINFORCEMENT, ROOF SUPPORT 3	2				
34	90338-24204	PLUG	2				
35	JX4-78334-00	HOSE	2				

FIG. 17 CARRIER

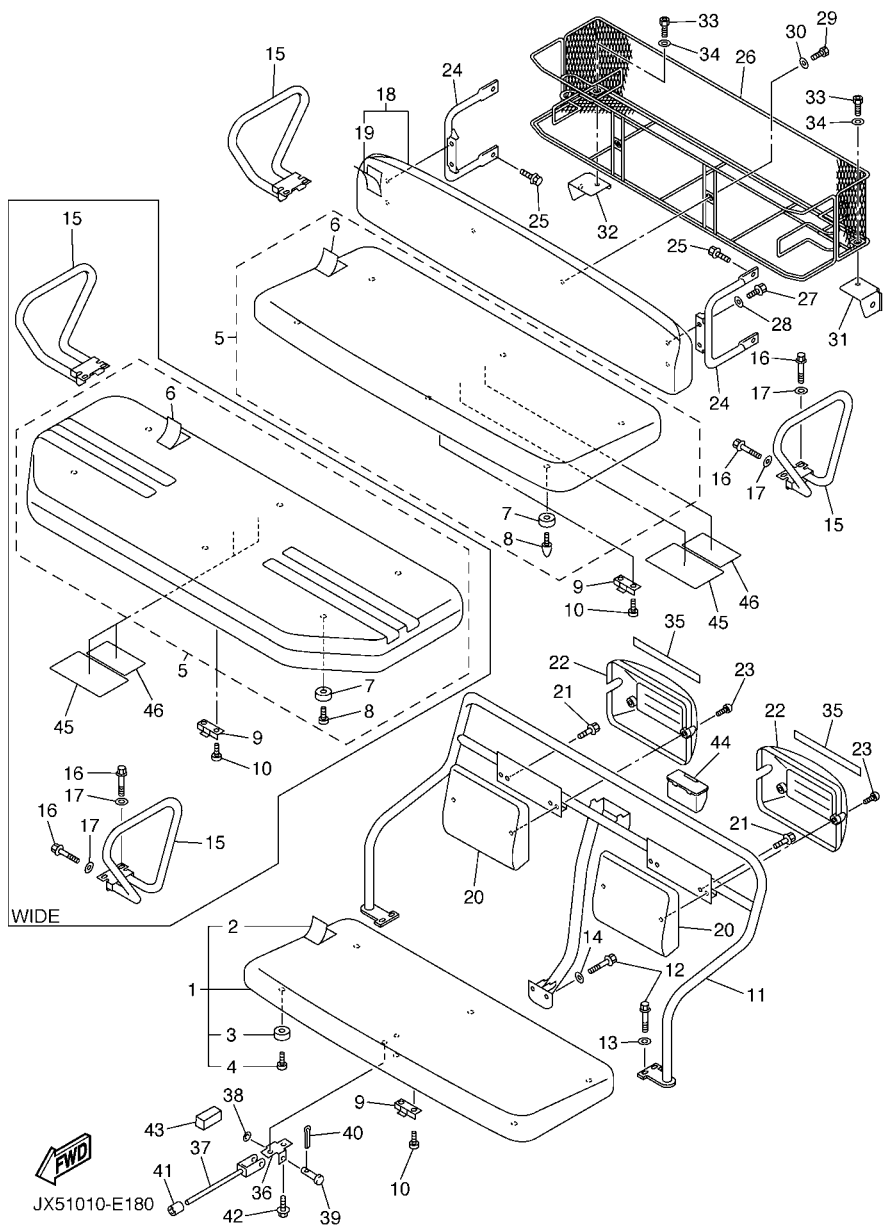
REF. NO.	PART NO.	DESCRIPTION	JX51				REMARKS
1	JX4-78355-01	BAND	1				
2	JF7-78367-00	PLATE, ANCHOR	2				
3	90159-06023	SCREW, WITH WASHER	4				
4	J17-78157-01	BASE, LOCK	1				
5	J17-78368-01	LEVER, LOCK	1				
6	J17-78369-00	PIN, LEVER	1				
7	90386-06108	BUSH	2				
8	99080-05600	CIRCLIP	1				
9	J17-78157-01	BASE, LOCK	1				
10	J17-78368-01	LEVER, LOCK	1				
11	J17-78369-00	PIN, LEVER	1				
12	90386-06108	BUSH	2				
13	99080-05600	CIRCLIP	1				
14	97880-06016	SCREW, PAN HEAD	4				
15	92990-06600	WASHER, PLATE	4				
16	95607-06200	NUT, SELF U-FLANGE	4				
17	JX4-7835J-01	SUPPORT, BAG LOWER 3	1				
18	95817-08060	BOLT, FLANGE	2				
19	95607-08200	NUT, SELF-LOCKING	2				
20	90387-08031	COLLAR	2				
21	JX4-7836H-00	CAP, BAG SUPPORT	2				
22	JX4-78351-01	SUPPORT, BAG UPPER	1				
23	JX4-78356-01	PAD, BAG SUPPORT	1				
24	95807-08016	BOLT, FLANGE	2				
25	95607-08200	NUT, SELF-LOCKING	2				
26	JX4-78364-00	PAD, BAG SUPPORT 3	2				
27	90269-05055	RIVET	2				



FWD

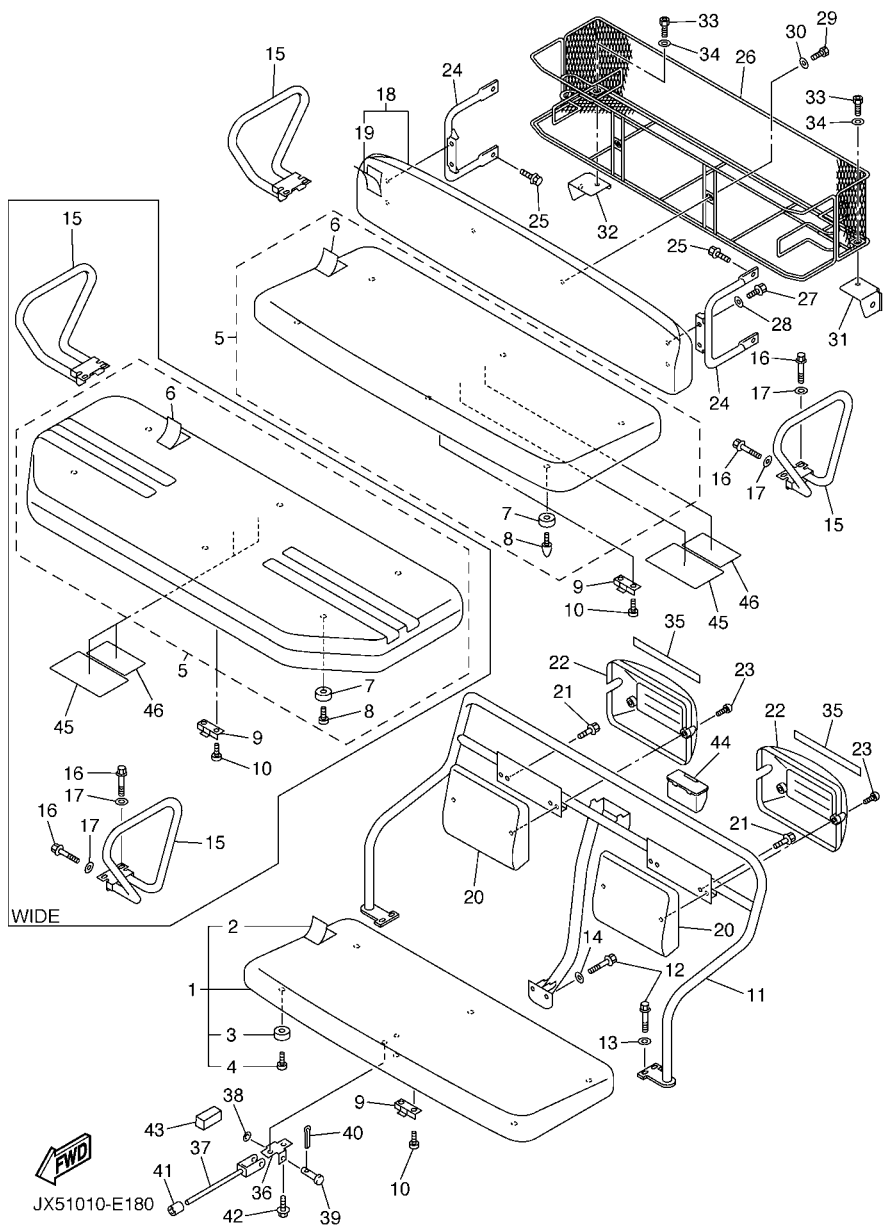
JX91010-E190

FIG. 18 SEAT



REF. NO.	PART NO.	DESCRIPTION	JX51		REMARKS
1	JX5-78410-00	SEAT ASSY	1		UR CAMEL
	JX5-78410-10	SEAT ASSY	1		UR BLUE
2	JX4-78405-00	.COVER, SEAT	1		UR CAMEL
	JX4-78405-10	.COVER, SEAT	1		UR BLUE
3	JF7-78433-00	.DAMPER, SEAT SUPPORT	6		
4	97707-50016	.SCREW, TRUSS HEAD TAPPING	6		
5	JX5-78420-00	SEAT ASSY 2 (STD TYPE)	1		UR CAMEL(SEA)
	JX5-78420-20	SEAT ASSY 2 (STD TYPE)	1		UR BLUE(SEA)
	JX5-78420-10	SEAT ASSY 2 (WIDE TYPE)	1		UR CAMEL(KOR)
	JX5-78420-30	SEAT ASSY 2 (WIDE TYPE)	1		UR BLUE(KOR)
6	JX4-78404-00	.COVER,SEAT (STD TYPE)	1		UR CAMEL(SEA)
	JX4-78404-20	.COVER,SEAT (STD TYPE)	1		UR BLUE(SEA)
	JX4-78404-10	.COVER,SEAT (WIDE TYPE)	1		UR CAMEL(KOR)
	JX4-78404-30	.COVER,SEAT (WIDE TYPE)	1		UR BLUE(KOR)
7	JF7-78433-00	.DAMPER, SEAT SUPPORT	6		
8	97707-50016	.SCREW, TRUSS HEAD TAPPING	6		
9	JR7-78426-00	HINGE, SEAT 1	4		
10	97027-06025	BOLT	8		
11	JX4-78423-00	SUPPORT, SEAT BACK	1		
12	90105-08096	BOLT, FLANGE	6		
13	90201-08730	WASHER, PLATE	4		
14	92907-08200	WASHER	2		
15	JX4-78361-00	ARM REST 1 (STD TYPE)	2		UR FOR SEA
	JX4-78361-10	ARM REST 1 (WIDE TYPE)	2		UR FOR KOR
16	90105-08096	BOLT, FLANGE	6		
17	90201-08730	WASHER, PLATE	6		
18	JX4-78407-01	REAR SEAT SUB-ASSY, BACK	1		UR CAMEL

FIG. 18 SEAT



REF. NO.	PART NO.	DESCRIPTION	JX51		REMARKS
18	JX4-78407-11	REAR SEAT SUB-ASSY, BACK	1		UR BLUE
19	JX4-78418-01	.COVER, SEAT	1		UR CAMEL
	JX4-78418-11	.COVER, SEAT	1		UR BLUE
20	JX4-78402-00	SEAT SUB ASSY, BACK	2		UR CAMEL
	JX4-78402-10	SEAT SUB ASSY, BACK	2		UR BLUE
21	95807-06016	BOLT, FLANGE	4		
22	JT4-78413-00	COVER, SEAT BACK	2		
23	98980-06012	SCREW, BIND	4		
24	JX4-78484-00	SUPT. , SEAT 1	2		
25	95880-08025	BOLT, FLANGE	4		
26	JX4-7810M-01	REAR STORAGE BOX COMP.	1		
27	95880-06020	BOLT, FLANGE	4		
28	90201-06019	WASHER, PLATE	4		
29	97080-06016	BOLT	2		
30	90201-06049	WASHER, PLATE	2		
31	JX4-7842F-00	SUPORT, SEAT (L.H)	1		
32	JX4-7842G-00	SUPORT, SEAT (R.H)	1		
33	97080-06012	BOLT	2		
34	90201-06049	WASHER, PLATE	2		
35	JX4-78297-00	PLATE, CAUTION 1	2		UR FOR SEA
	JR7-78297-00	PLATE, CAUTION 1	2		UR FOR KOR
36	JT2-77139-00	HOLDER, ROD 1	1		
37	JT2-78226-00	ROD, SEAT STOPPER	1		
38	92907-06600	WASHER, PLATE	1		
39	91701-06032	PIN, CLEVIS	1		
40	91401-20012	PIN, COTTER	1		
41	91A10-05002	TUBE, FLEXIBLE	1		

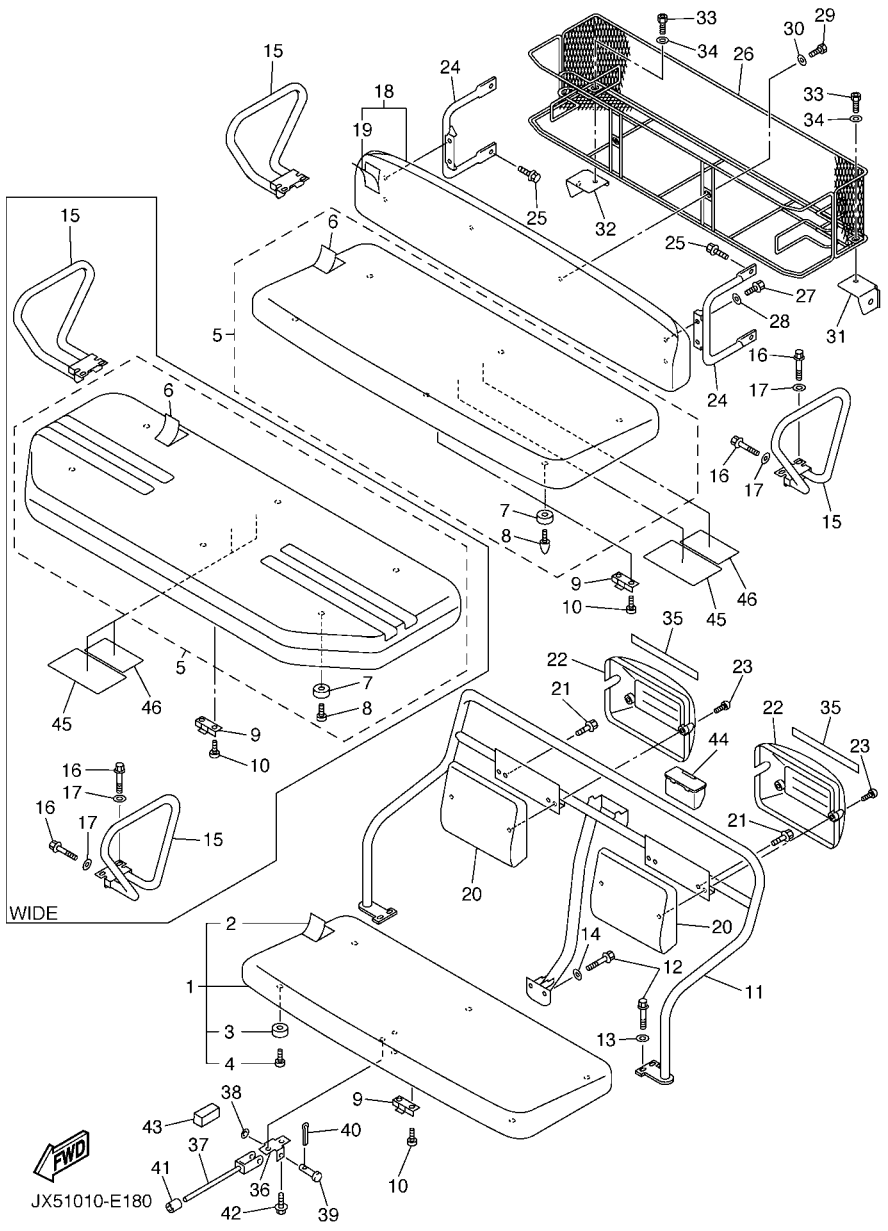
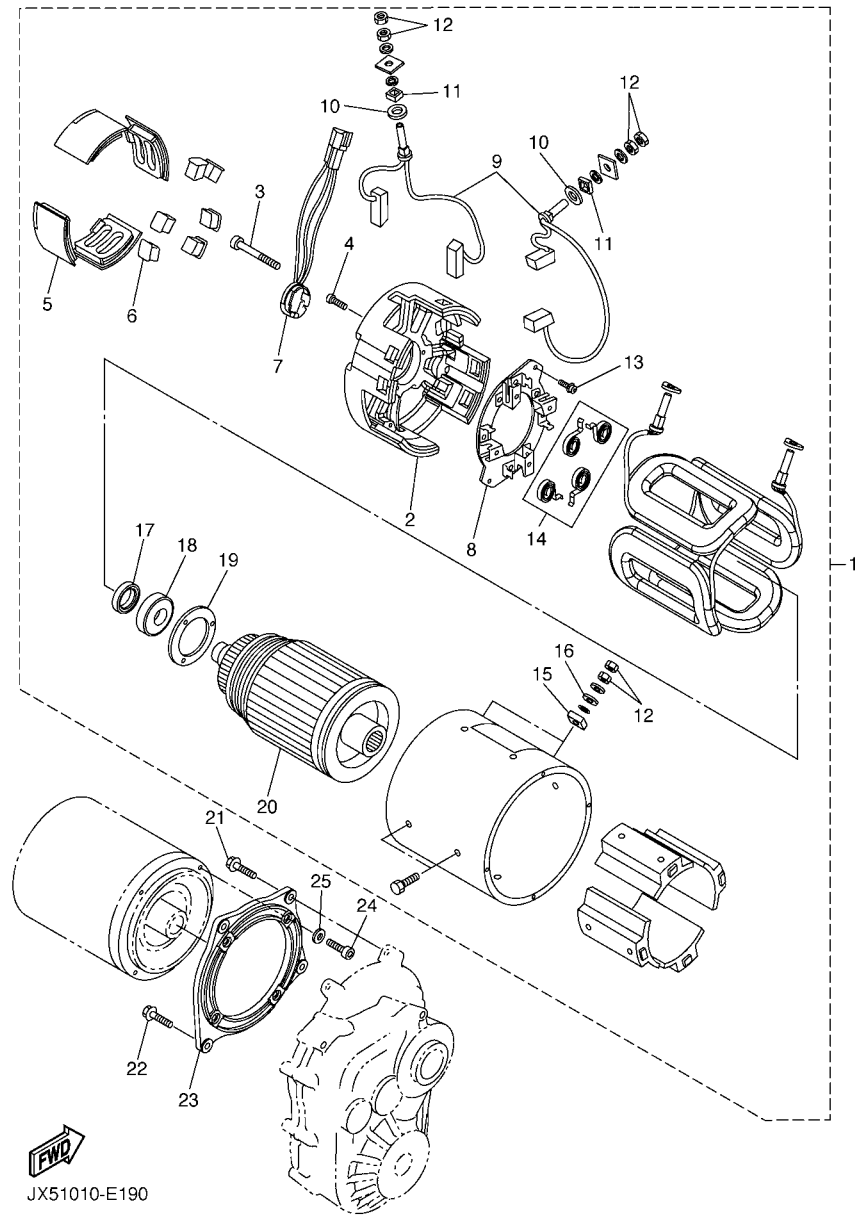


FIG. 18 SEAT

REF. NO.	PART NO.	DESCRIPTION	JX51		REMARKS
42	95807-06016	BOLT, FLANGE	2		
43	JT2-78228-00	DAMPER, SEAT STOPPER	1		
44	JF7-78287-10	ASH TRAY	1		
45	JX5-77765-10	LABEL, WARNING 5	1		UR FOR SEA
	JX5-77765-00	LABEL, WARNING 5	1		UR FOR KOR
46	JX5-78297-10	PLATE, CAUTION 1	1		UR FOR SEA
	JT2-78297-00	PLATE, CAUTION 1	1		UR FOR KOR



JX51010-E190

FIG. 19 ELECTRIC MOTOR

REF. NO.	PART NO.	DESCRIPTION	JX51				REMARKS
1	JU6-H1890-00	MOTOR ASSY	1				
2	JU6-H183J-00	.BRACKET, FRONT	1				
3	JU6-H1828-00	.BOLT 2	2				
4	JU6-H1846-00	.SCREW	3				
5	JU6-H1129-00	.COVER, BRUSH	4				
6	JU6-H1139-00	.COVER, BRUSH 2	6				
7	JU6-H1670-00	.PICK-UP ASSY	1				
8	JU6-H1840-00	.BRUSH HOLDER ASSY	1				
9	JU6-H1801-00	.BRUSH SET	1				
10	J56-H1824-00	.WASHER 2	2				
11	J56-H182G-00	.BUSH, TERMINAL	2				
12	JU6-H1872-00	.NUT, SPECIAL	8				
13	JU6-H1848-00	.SCREW, BRUSH HOLDER	2				
14	JU2-H1617-00	.SPRING, BRUSH	1				
15	JU6-H1824-00	.WASHER 2	2				
16	JU6-H1843-00	.WASHER 1	2				
17	JU6-H181K-00	.MAGNET	1				
18	JU6-H185B-00	.BEARING 1	1				
19	JU6-H1856-00	.BEARING	1				
20	JU6-H1850-00	.ARMATURE ASSY	1				
21	95817-06025	BOLT, FLANGE	3				
22	95027-08025	BOLT, FLANGE	1				
23	JX5-81822-00	BRACKET, STARTING MOTOR	1				
24	90110-06230	BOLT, HEXAGON SOCKET HEAD	4				
25	90201-06034	WASHER, PLATE	4				



JX51400-E200

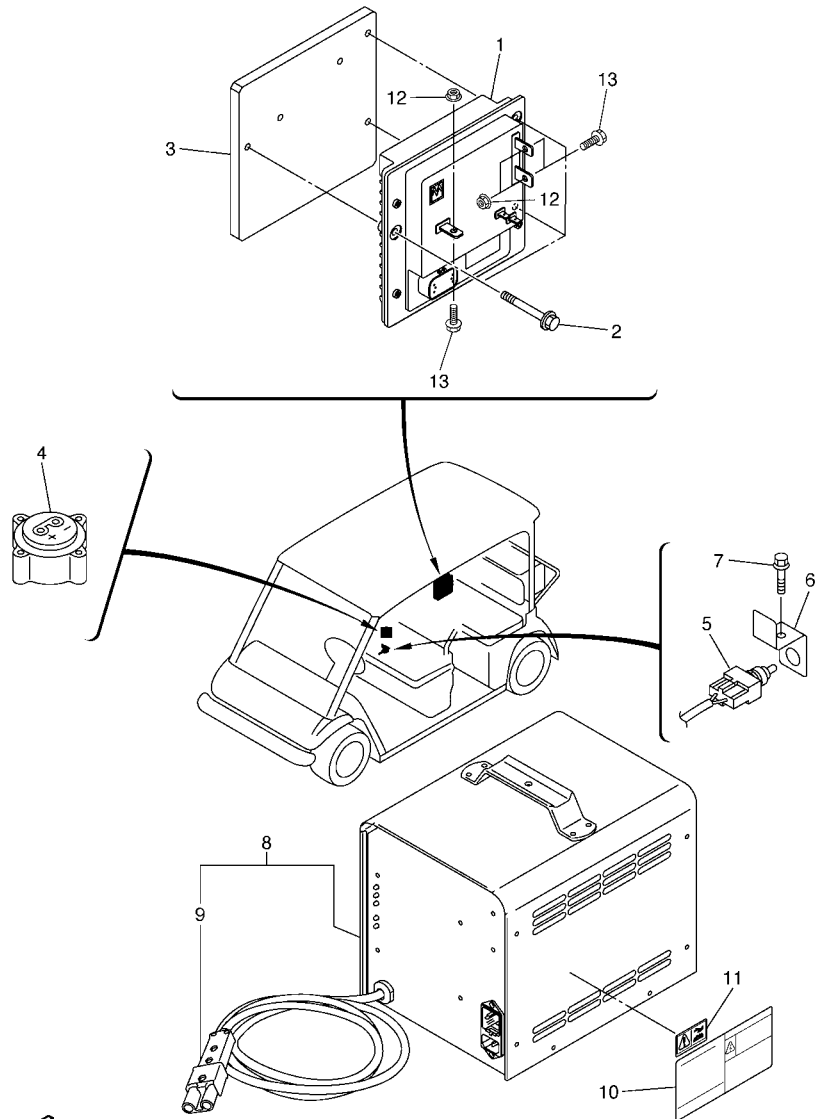
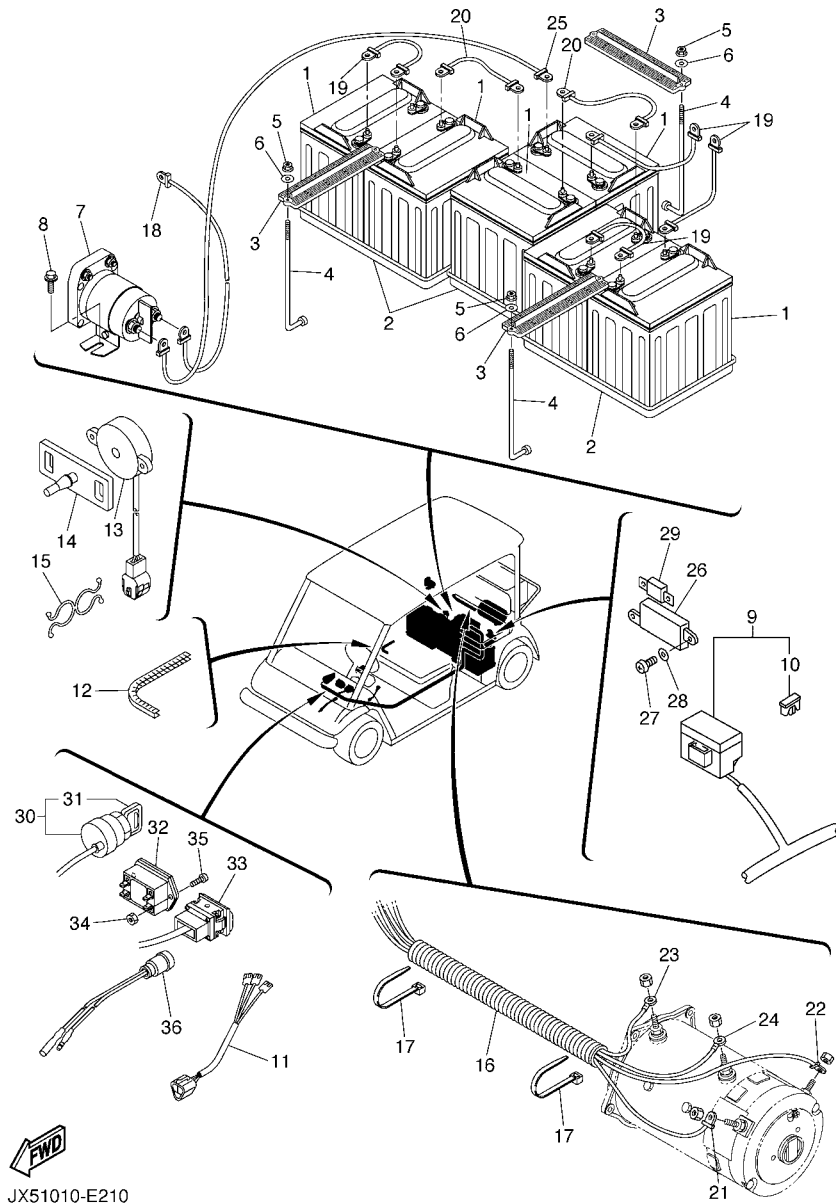


FIG. 20 CONTROL UNIT

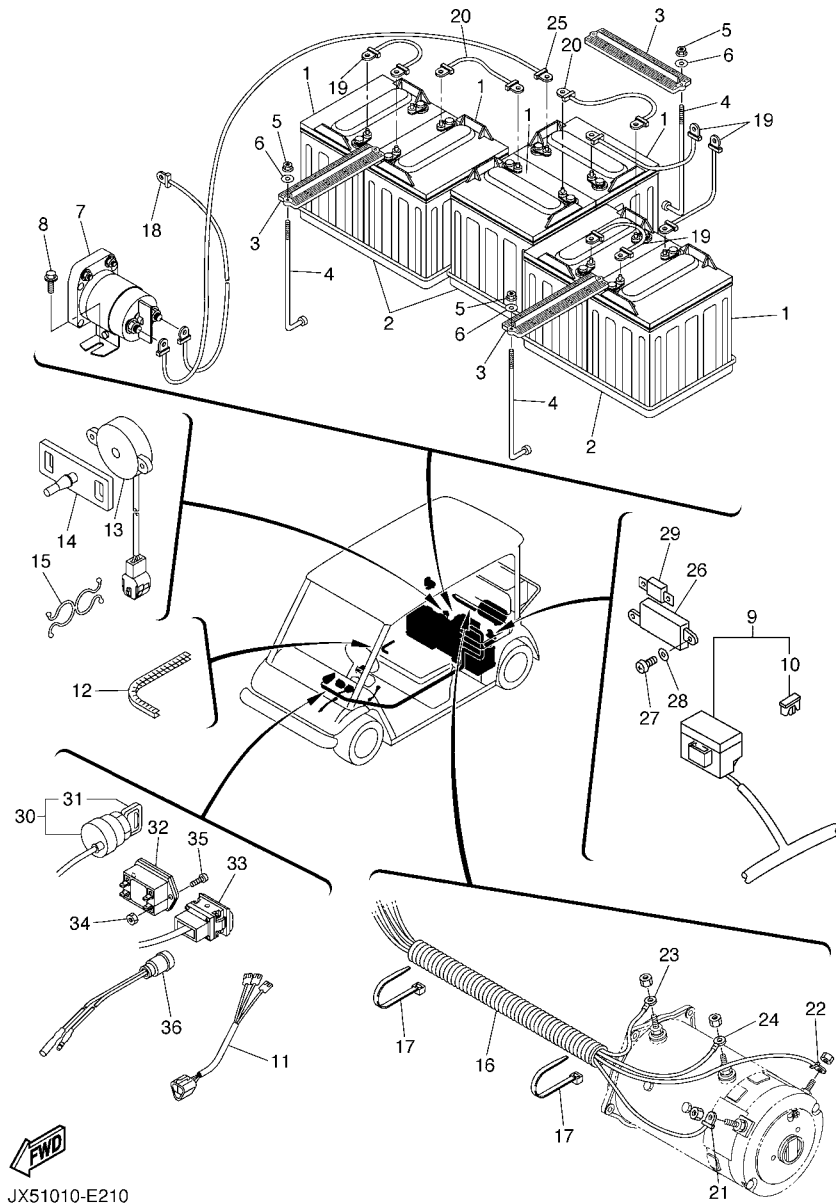
REF. NO.	PART NO.	DESCRIPTION	JX51				REMARKS
1	JX5-86510-00	MOTOR CONTROL UNIT ASSY	1				
2	95827-06055	BOLT, FLANGE	3				
3	JX5-86515-00	PLATE, HEAT SINK	1				
4	JR1-H6181-02	RECEPTACLE	1				
5	JT2-82727-01	SWITCH	1				
6	JX5-82554-00	STAY, NEUTRAL SWITCH	1				
7	95807-06030	BOLT, FLANGE	1				
8	JR1-H2107-21	CHARGER, BATTERY	1				50/60HZ, 100/115/230V
9	JR1-H235A-00	.DC PLUG SET	1				
10	JT8-77766-00	LABEL, WARNING 6	1				FOR KOR
11	7VV-28176-30	LABEL, CAUTION (WARNING)	1				
12	95607-06200	NUT, SELF U-FLANGE	3				
13	95807-06016	BOLT, FLANGE	3				



JX51010-E210

FIG. 21 ELECTRICAL 1

REF. NO.	PART NO.	DESCRIPTION	JX51			REMARKS
1	*	BATTERY ASSY	6			LM
2	J56-H2123-00	SEAT, BATTERY	3			
3	JF3-H2136-00	PLATE, BATTERY FITTING	3			
4	JN4-H2133-00	SCREW, FITTING	6			
5	95707-06500	NUT, FLANGE	6			
6	90201-060H4	WASHER, PLATE	6			
7	JU6-H1950-00	RELAY ASSY	1			
8	95807-06020	BOLT, FLANGE	2			
9	JX5-82590-00	WIRE HARNESS ASSY	1			
10	1NL-82151-00	.FUSE (5A-BL)	1			
11	JX5-82507-00	WIRE, LEAD	1			
12	JX4-82355-00	GROMMET	1			
13	JR1-H3383-01	BUZZER	1			
14	JN6-H3386-01	STAY, BUZZER	1			
15	90464-14134	CLAMP	5			
16	JX5-85597-00	TUBE 1	1			
17	90465-13152	CLAMP	2			
18	JX5-86523-00	WIRE 3	1			
19	JX5-86211-00	WIRE, LEAD	4			
20	JX5-86521-00	WIRE 1	2			
21	JX5-86524-00	WIRE 4	1			
22	JX5-86525-00	WIRE 5	1			
23	JX5-86527-00	WIRE 7	1			
24	JX5-86528-00	WIRE 8	1			
25	JX5-86522-00	WIRE 2	1			
26	JT2-82170-00	FUSE BOX ASSY	1			
27	98507-06012	SCREW, PAN HEAD	2			



JX51010-E210

FIG. 21 ELECTRICAL 1

REF. NO.	PART NO.	DESCRIPTION	JX51				REMARKS
28	92907-06600	WASHER, PLATE	2				
29	JX5-82151-00	FUSE	1				
30	JT5-82510-00	MAIN SWITCH ASSY	1				
31	J44-82511-00	.KEY, MAIN SWITCH	1				
32	JX5-8351C-01	GAUGE 1	1				
33	JX5-82617-00	SWITCH	1				
34	95307-03600	NUT	2				
35	98907-03012	SCREW, BIND	2				
36	JT1-81977-10	BULB, PILOT LIGHT (RED)	1				

NUMERICAL INDEX

PART NO.	REF. NO.	PART NO.	REF. NO.	PART NO.	REF. NO.	PART NO.	REF. NO.	PART NO.	REF. NO.	PART NO.	REF. NO.
JX5-22110-00	1 - 1	JX4-2387E-00	4 - 12	JT0-27250-00	5 - 1	JX4-77202-11	11 - 12	JX4-78142-10	14 - 5	JX4-78329-00	16 - 2
JX4-22123-00	1 - 10	JR7-2387F-00	4 - 15	JX4-27254-00	10 - 2	JX4-77202-31	11 - 12	JX4-78142-20	14 - 5	JX4-7832F-00	16 - 3
JX4-22124-00	1 - 3	JR7-2387G-00	4 - 13		10 - 5	JX4-77212-00	11 - 10	JX4-78142-30	14 - 5	JX4-7832H-00	14 - 8
JX4-22172-00	1 - 2	JR7-2387J-00	4 - 16	J55-27260-00	7 - 9	JX4-77216-00	11 - 6	JX4-78142-40	14 - 5	JX4-78334-00	16 - 35
JX3-22210-00	1 - 7	JR7-2387K-00	4 - 14	J55-27270-00	6 - 9		11 - 14	JX4-7814E-00	14 - 18	JX4-7833H-00	14 - 9
5GJ-22426-00	2 - 19	JR7-23894-00	4 - 23	JX5-27275-00	5 - 38	JX4-77217-00	11 - 4	JX4-7814H-00	13 - 3	JX4-78351-01	17 - 22
JX5-22501-01	2 - 1	8AC-2414B-01	13 - 7	J10-27281-00	6 - 5	JX4-77222-00	11 - 19	JX3-78150-00	14 - 17	JX4-78355-01	17 - 1
JX4-22504-00	2 - 4	JR7-2467K-00	4 - 21		7 - 5	JX4-77225-00	11 - 7	J17-78157-01	17 - 4	JX4-78356-01	17 - 23
JX5-22506-01	2 - 2	JX4-25100-00	3 - 28	J10-27282-00	6 - 6	JX4-77233-01	11 - 11		17 - 9	JN5-78357-00	4 - 37
JX5-2254R-00	14 - 12		10 - 14		7 - 6	JX4-77238-00	11 - 20	JX4-78164-00	12 - 2	JX4-78358-00	4 - 39
JX3-22562-00	2 - 15	JX4-2510S-00	3 - 31	J10-27286-00	6 - 10	JX4-77261-00	11 - 2	JX4-78165-00	12 - 3	JX4-7835E-00	13 - 5
JX4-22571-00	2 - 6		10 - 17		7 - 10	JX4-77262-00	11 - 3	JX4-78181-00	13 - 19	JX4-7835J-01	17 - 17
JX4-22572-00	2 - 7	JX4-25110-00	3 - 32	JR9-27445-00	8 - 37	JX4-77271-00	11 - 21	JX4-78183-00	12 - 9	JX4-78361-00	18 - 15
JX4-2257D-00	2 - 8	5GT-2512A-00	3 - 40	JF3-27486-00	8 - 31	JX4-77272-00	11 - 22	JX4-78187-00	15 - 1	JX4-78361-10	18 - 15
JX4-2257F-00	2 - 9		10 - 19	JN9-27487-00	8 - 32	JX4-77274-00	11 - 15	JX4-7818E-00	12 - 12	JX4-78364-00	17 - 26
JX4-22597-00	2 - 11	JX4-25180-00	3 - 29	JF3-27813-00	8 - 29	JX4-77275-01	11 - 23	JX4-7818F-00	12 - 13	JX4-78365-00	17 - 32
JX4-2259A-00	2 - 17		10 - 15	J14-27815-00	8 - 15	JX4-77282-01	11 - 13	JX4-78191-00	15 - 4	JF7-78367-00	17 - 2
JX4-23350-00	3 - 18	J55-25357-00	7 - 4	JF3-27825-00	8 - 24	JX4-77458-00	13 - 18	JX4-78192-00	15 - 5	J17-78368-01	17 - 5
JX4-23400-00	4 - 8	J55-25358-00	6 - 4	JX5-2784A-00	8 - 2	JX4-77510-00	12 - 1	JX4-7819L-00	15 - 8		17 - 10
JX4-23417-00	4 - 27	JN5-25671-00	5 - 6	J14-27871-00	8 - 3	JX4-77520-00	12 - 6	JF7-78214-00	16 - 25	J17-78369-00	17 - 6
JX4-23427-00	4 - 30	J17-25672-01	5 - 15	JX4-27874-00	8 - 1	JF7-77563-00	12 - 11	JT2-78226-00	18 - 37		17 - 11
	4 - 36	J17-25673-00	5 - 40	JR9-27981-00	8 - 28	JX5-77711-00	13 - 15	JT2-78228-00	18 - 43	JX4-7836H-00	17 - 21
JX4-23445-00	4 - 26	J10-25681-00	5 - 54	7VV-28176-30	20 - 11	JX6-77741-00	13 - 16	JX4-78231-00	14 - 26	JX4-78374-00	17 - 33
JX4-23510-00	3 - 21	JX4-25685-00	5 - 55	JX5-46311-00	9 - 1	JX5-77762-00	4 - 38	JX4-78241-00	14 - 28	JX4-78375-00	17 - 28
JX4-23520-00	3 - 24	JR9-2625H-00	8 - 23	JX5-46312-00	9 - 10	JN5-77762-10	4 - 38	JX4-78271-00	2 - 18	JX4-78389-00	17 - 36
2HR-23526-00	3 - 2	3YK-26280-00	11 - 32	JX3-46319-00	9 - 16	JX5-77765-00	18 - 45	JX4-78273-00	13 - 24	JX4-78392-10	11 - 27
	3 - 11	3YK-26290-00	11 - 33	JX5-46321-01	9 - 19	JX5-77765-10	18 - 45	J50-78274-10	16 - 26	JX4-78393-00	16 - 14
JX4-23540-00	3 - 1	JX4-2629N-00	11 - 38	JT2-46351-00	9 - 20	JT8-77766-00	20 - 10	JF7-78287-10	13 - 23	JX4-78394-00	16 - 15
JX4-23549-00	3 - 3	JX4-2633G-00	5 - 47	JX5-46361-01	9 - 21	JX4-77767-10	11 - 9		18 - 44	JX4-78402-00	18 - 20
JX4-23570-00	3 - 10	JX4-26341-00	5 - 62	JT2-46362-00	9 - 22	JN5-77768-10	11 - 8	JR7-78297-00	18 - 35	JX4-78402-10	18 - 20
JX4-23579-00	3 - 12	JX5-26351-00	5 - 63	JX4-46411-00	9 - 26	JX4-77768-10	11 - 18	JT2-78297-00	18 - 46	JX4-78404-00	18 - 6
JX4-2357F-00	3 - 22	JX4-26361-00	5 - 64	JX4-46414-00	9 - 28	JX4-77768-20	11 - 18	JX4-78297-00	18 - 35	JX4-78404-10	18 - 6
JX4-2358F-00	3 - 25	J38-27204-00	6 - 3	JX4-46415-00	9 - 29	JX4-78101-00	13 - 6	JX5-78297-10	18 - 46	JX4-78404-20	18 - 6
JX4-23810-00	4 - 1	J38-27205-00	7 - 3	J38-46417-02	9 - 30	JX4-78101-10	13 - 6	JX5-78299-00	2 - 21	JX4-78404-30	18 - 6
JX4-23812-00	4 - 11	JT0-27207-00	5 - 20	JX3-46421-00	9 - 27	JX4-78101-20	13 - 6	JX5-78299-10	2 - 21	JX4-78405-00	18 - 2
JR9-23823-00	4 - 28	JH2-27208-01	6 - 1	JX5-46510-00	10 - 7	JX4-78101-30	13 - 6	JX4-7830A-10	11 - 28	JX4-78405-10	18 - 2
JR7-23833-00	4 - 24	JH2-27209-01	7 - 1	JX5-46520-00	10 - 9	JX4-78101-40	13 - 6	JX4-7830A-30	11 - 28	JX4-78407-01	18 - 18
JX4-23837-00	4 - 20	JN5-27211-00	5 - 3	JX4-46521-00	10 - 13	JX4-7810M-01	18 - 26	JX4-7830B-10	11 - 29	JX4-78407-11	18 - 18
JN5-23838-00	4 - 3	JX4-27215-00	5 - 48	JX5-46541-00	10 - 1	JX4-78113-02	13 - 11	JX4-7830B-30	11 - 29	JX5-78410-00	18 - 1
JX4-23841-00	4 - 25	J17-27221-00	5 - 33	JX5-46551-00	10 - 4	JX4-78114-00	13 - 1	JX4-7830C-00	16 - 28	JX5-78410-10	18 - 1
JR7-23844-00	4 - 17	JT0-27224-00	5 - 21	JN3-47559-00	9 - 35	JX4-78119-01	13 - 13	JX4-7830D-00	16 - 29	JT4-78413-00	18 - 22
JR7-23848-00	4 - 19	J17-27228-00	5 - 41	JX4-77118-00	13 - 17	JX4-78139-00	13 - 21	JX4-7830E-00	16 - 18	JX4-78418-01	18 - 19
JX4-2384N-00	4 - 10	JT0-27231-00	5 - 26	JX4-77135-00	13 - 22	JX3-78141-00	14 - 1	JX4-7830F-00	16 - 21	JX4-78418-11	18 - 19
J50-23857-00	4 - 2	JR7-27232-00	5 - 27	JT2-77139-00	18 - 36	JX3-78141-10	14 - 1	JX4-78314-00	16 - 1	JX5-78420-00	18 - 5
JR7-23866-00	4 - 22	JT0-27234-00	5 - 29	JX4-77157-00	13 - 10	JX3-78141-20	14 - 1	JX4-78316-00	16 - 17	JX5-78420-10	18 - 5
JX4-23876-00	4 - 29	JR9-27241-00	8 - 25	JX4-77188-00	13 - 9	JX3-78141-30	14 - 1	JX4-7831L-00	11 - 31	JX5-78420-20	18 - 5
	4 - 35	JT0-27241-00	5 - 23	JX3-77201-11	11 - 1	JX3-78141-40	14 - 1	JX4-7831N-00	16 - 33	JX5-78420-30	18 - 5
JX4-2387A-00	4 - 9	JT0-27247-00	8 - 5	JX4-77201-11	11 - 1	JX4-78142-00	14 - 5	JX4-78328-00	13 - 4	JX4-78423-00	18 - 11

NUMERICAL INDEX

PART NO.	REF. NO.	PART NO.	REF. NO.	PART NO.	REF. NO.	PART NO.	REF. NO.	PART NO.	REF. NO.	PART NO.	REF. NO.
JR7-78426-00	18 - 9	JU6-H1843-00	19 - 16	90183-05009	5 - 31	90269-07064	14 - 29	90506-20281	6 - 7	93306-205A7	9 - 3
JF7-78427-00	14 - 2	JU6-H1846-00	19 - 4	90185-06M05	16 - 5	90269-10005	13 - 2		7 - 7	93900-00022	3 - 30
JX4-78427-00	14 - 10	JU6-H1848-00	19 - 13		16 - 10		13 - 12	90506-26282	8 - 10		10 - 16
JX4-7842F-00	18 - 31	JU6-H1850-00	19 - 20	90185-10115	5 - 17		13 - 20	90506-29003	5 - 45	95027-08025	19 - 22
JX4-7842G-00	18 - 32	JU6-H1856-00	19 - 19		5 - 51		14 - 25	90508-32015	5 - 14	95307-03600	21 - 34
JF7-78433-00	18 - 3	JU6-H185B-00	19 - 18	90185-12072	1 - 5		15 - 7	91401-20012	8 - 17	95307-06600	8 - 27
	18 - 7	JU6-H1872-00	19 - 12	90201-043H5	11 - 17		17 - 34		18 - 40	95307-08600	5 - 13
JX5-78460-00	2 - 13	JU6-H1890-00	19 - 1	90201-044H9	4 - 41	90338-24204	16 - 34	91401-25020	3 - 7		5 - 22
JX4-78484-00	18 - 24	JU6-H1950-00	21 - 7	90201-06008	14 - 7	90340-14036	9 - 17		3 - 15	95307-08700	5 - 28
JX5-81822-00	19 - 23	JR1-H2107-21	20 - 8		14 - 20	90380-10001	5 - 32		3 - 39		5 - 61
JT1-81977-10	21 - 36	J56-H2123-00	21 - 2	90201-06019	14 - 14	90381-06033	8 - 14		4 - 34		8 - 6
1NL-82151-00	21 - 10	JN4-H2133-00	21 - 4		14 - 16	90384-05163	5 - 7	91490-25020	5 - 58		8 - 38
JX5-82151-00	21 - 29	JF3-H2136-00	21 - 3		14 - 22	90384-14080	5 - 2		5 - 67	95307-12700	17 - 31
JT2-82170-00	21 - 26	JR1-H235A-00	20 - 9		14 - 24		5 - 53	91609-40040	9 - 33	95307-12800	17 - 30
JX4-82355-00	21 - 12	JR1-H3383-01	21 - 13		16 - 11		8 - 7	91701-06032	18 - 39	95380-06800	17 - 38
JX5-82507-00	21 - 11	JN6-H3386-01	21 - 14		18 - 28	90386-06108	17 - 7	91701-08018	5 - 66	95604-16200	3 - 38
JT5-82510-00	21 - 30	JR1-H6181-02	20 - 4	90201-06034	19 - 25		17 - 12	91701-10022	5 - 56	95607-06200	2 - 20
J44-82511-00	21 - 31	JX4-W2536-00	6 - 2	90201-06049	18 - 30	90387-046N7	4 - 43	91701-10028	5 - 57		17 - 16
JX5-82554-00	20 - 6		7 - 2		18 - 34	90387-05002	5 - 30	91A10-05002	18 - 41		20 - 12
JX5-82590-00	21 - 9	90101-10793	5 - 16	90201-06068	17 - 39	90387-06012	5 - 36	92017-08016	12 - 10	95607-08200	17 - 19
JX5-82617-00	21 - 33	90105-08096	18 - 12	90201-060H4	21 - 6	90387-0602R	16 - 12	92907-05600	5 - 43		17 - 25
JT2-82727-01	20 - 5		18 - 16	90201-06416	16 - 6	90387-08013	5 - 10		8 - 13	95607-10200	1 - 9
JF7-82817-20	8 - 11	90105-082A0	6 - 13	90201-08730	16 - 30	90387-08014	5 - 11		8 - 22		3 - 9
JX5-8351C-01	21 - 32		7 - 13		18 - 13	90387-08031	17 - 20		8 - 34		3 - 17
JX5-85597-00	21 - 16	90105-10030	4 - 31		18 - 17	90387-084X9	16 - 7		8 - 36		3 - 20
JN9-85885-00	8 - 20	90105-10117	5 - 50	90201-105A2	4 - 32	90387-10027	5 - 49	92907-06100	8 - 26	95607-12100	4 - 4
JX5-86211-00	21 - 19	90105-10124	9 - 31	90201-10626	5 - 52	90387-1015D	5 - 19	92907-06600	8 - 16	95607-12200	1 - 12
JX5-86510-00	20 - 1	90105-10728	3 - 5	90201-12190	4 - 5	90387-12009	5 - 8		18 - 38	95707-06500	5 - 35
JX5-86515-00	20 - 3	90105-12031	1 - 11	90201-121H8	6 - 11	90387-252M8	9 - 25		21 - 28		21 - 5
JX5-86521-00	21 - 20	90110-06230	19 - 24		7 - 11	90387-30006	3 - 27	92907-08100	11 - 35	95707-08500	4 - 6
JX5-86522-00	21 - 25	90114-10003	3 - 35	90201-121H9	6 - 12	90430-14043	9 - 18	92907-08200	5 - 12		11 - 36
JX5-86523-00	21 - 18		10 - 8		7 - 12	90462-08007	9 - 34		11 - 34	95707-10500	3 - 6
JX5-86524-00	21 - 21		10 - 10	90201-121J0	1 - 6	90462-10236	8 - 39		18 - 14	95807-06012	2 - 14
JX5-86525-00	21 - 22	90157-06068	16 - 27	90201-142M6	8 - 9	90464-14134	21 - 15	92907-08600	8 - 19	95807-06016	18 - 21
JX5-86527-00	21 - 23	90159-06023	17 - 3	90201-16019	3 - 37	90464-50268	4 - 18		12 - 8		18 - 42
JX5-86528-00	21 - 24	90171-12039	3 - 14	90201-20272	9 - 23	90465-13152	15 - 2	92990-06600	17 - 15		20 - 13
JU6-H1129-00	19 - 5		4 - 33	90201-207J5	9 - 24		21 - 17	93102-25017	9 - 6	95807-06020	11 - 39
JU6-H1139-00	19 - 6	90179-06020	11 - 24	90202-08001	5 - 24	90465-13275	15 - 3	93102-25360	9 - 7		11 - 40
JU2-H1617-00	19 - 14	90179-06021	16 - 20	90249-14129	5 - 59	90468-18189	5 - 25		9 - 14		16 - 16
JU6-H1670-00	19 - 7		16 - 23	90267-48101	2 - 10	90480-13398	13 - 8	93102-32008	9 - 13		21 - 8
JU6-H1801-00	19 - 9	90179-06636	16 - 19		2 - 16		17 - 35	93210-132A8	5 - 18	95807-06025	8 - 4
JU6-H181K-00	19 - 17		16 - 22		15 - 6	90480-16629	16 - 13		5 - 46	95807-06030	14 - 3
J56-H1824-00	19 - 10	90179-07564	5 - 5		15 - 9	90480-19631	16 - 8	93210-14104	8 - 8		20 - 7
JU6-H1824-00	19 - 15	90179-08261	5 - 60	90269-05055	17 - 27	90502-10013	4 - 42	93305-00601	3 - 33	95807-06040	14 - 6
JU6-H1828-00	19 - 3	90179-08449	11 - 37	90269-06003	16 - 32	90506-10001	5 - 37	93306-00803	9 - 5		14 - 11
J56-H182G-00	19 - 11	90179-08491	9 - 37	90269-07064	13 - 14	90506-12520	5 - 44		9 - 12		14 - 19
JU6-H183J-00	19 - 2	90179-10540	3 - 36		14 - 4	90506-14001	6 - 8	93306-20401	9 - 11	95807-08016	17 - 24
JU6-H1840-00	19 - 8		10 - 18		14 - 27		7 - 8	93306-20501	9 - 2	95807-08020	5 - 39

NUMERICAL INDEX

PART NO.	REF. NO.	PART NO.	REF. NO.	PART NO.	REF. NO.	PART NO.	REF. NO.	PART NO.	REF. NO.	PART NO.	REF. NO.
95817-06020	3 - 23	97707-50016	18 - 8								
	3 - 26	97880-06016	17 - 14								
	10 - 3	98507-05016	8 - 21								
	10 - 6		8 - 33								
95817-06025	19 - 21	98507-05025	8 - 12								
95817-08020	2 - 12	98507-06012	21 - 27								
	4 - 7	98507-08025	12 - 7								
95817-08055	11 - 30	98780-06014	11 - 5								
	16 - 31	98780-06035	11 - 25								
95817-08060	17 - 18	98907-03012	21 - 35								
95817-08075	9 - 36	98980-06012	17 - 37								
95817-10020	1 - 13		18 - 23								
95817-10025	2 - 5	99001-04600	8 - 30								
	10 - 11	99001-09600	5 - 65								
95817-10030	10 - 12	99002-04600	5 - 42								
95817-10070	3 - 8	99009-30400	3 - 4								
	3 - 16	99009-32400	3 - 13								
95817-12025	17 - 29	99009-52500	9 - 4								
95817-12065	1 - 4	99009-55500	3 - 34								
95827-06012	12 - 4	99080-05600	17 - 8								
95827-06055	20 - 2		17 - 13								
95827-06085	5 - 34	99530-12016	9 - 15								
95827-08016	2 - 3	99530-14016	9 - 32								
95827-08040	9 - 8										
95827-08050	9 - 9										
95827-08065	12 - 5										
95827-10045	1 - 8										
	3 - 19										
95880-06014	14 - 13										
95880-06020	11 - 26										
	14 - 15										
	14 - 23										
	16 - 24										
	18 - 27										
95880-06035	14 - 21										
95880-08025	18 - 25										
97007-05012	8 - 35										
97007-08016	8 - 18										
97027-06025	18 - 10										
97027-06035	5 - 4										
97027-08100	5 - 9										
97080-06012	18 - 33										
97080-06016	18 - 29										
97080-06020	16 - 9										
97080-06040	16 - 4										
97707-40508	11 - 16										
97707-40525	4 - 40										
97707-50016	18 - 4										