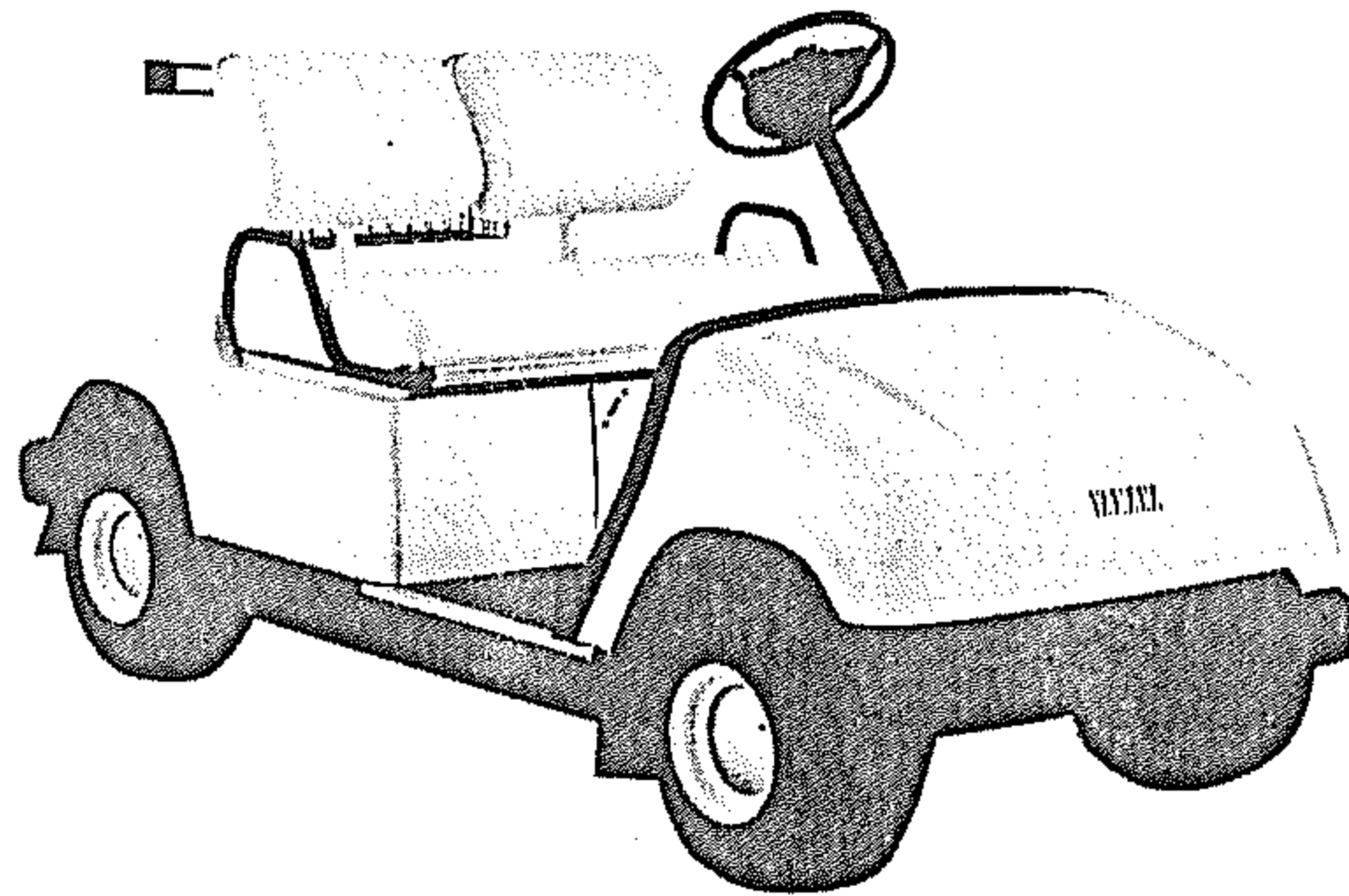


YAMAHA

PARTS CATALOGUE

G8-EF (JF31)

19JF3-10DE1



FOREWORD

This Parts Catalogue is related to the parts in use for the Yamaha G8-EF (JF31). When you are ordering replacement parts for the G8-EF (JF31), refer to this Parts Catalogue and quote both part numbers and part names correctly.

1. Modifications or additions which have been made after issue of the Parts Catalogue will be announced in the Yamaha Parts News. It is advisable that according to the Yamaha Parts News you make necessary corrections to the Parts Catalogue on hand to keep it up-to-date.

2. Abbreviations

The following abbreviations are used in this Parts Catalogue.

- U.R. Use size (thickness) and / or number as required.
- U.N. Use as many as you need.
- A.P. Alternate Parts
- L.M. Local Made
- F# Frame No. (Applicable machine No.)

3. The parts marked with (*) in the parts number column of this Catalogue are not supplied with by Yamaha, those have to be found locally.
4. Parts, which are to be supplied in the form of assemblies, are listed with an indentation of one letter's space, and a dot (.) is put against the name of each part.

EXAMPLE CARBURETOR ASS'Y
 .JET, pilot
 .NOZZLE, main

5. Indication of No. of constituent parts for assembly

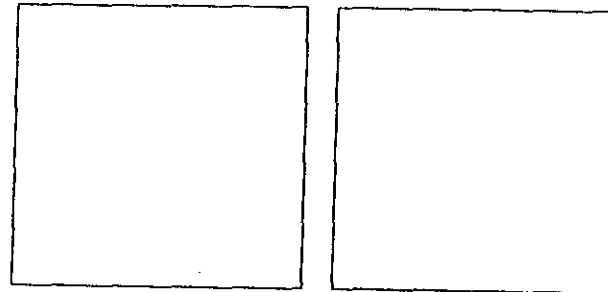
The numeral appearing to the right of each constituent part under the description indicates the quantity of such parts for each individual assembly unit.

EXAMPLE

Part No.	Description	Qty	Remarks
2F5-83310-60	FRONT FLASHER LIGHT ASS'Y	2	
115-83311-60	.BULB (6V-18W)	1	
1M1-83309-60	.REFLECTOR	1	

6. Initial Serial No. and Color Code

A	Frame Serial No.	JF3-000101 and following
B	Engine Serial No.	_____

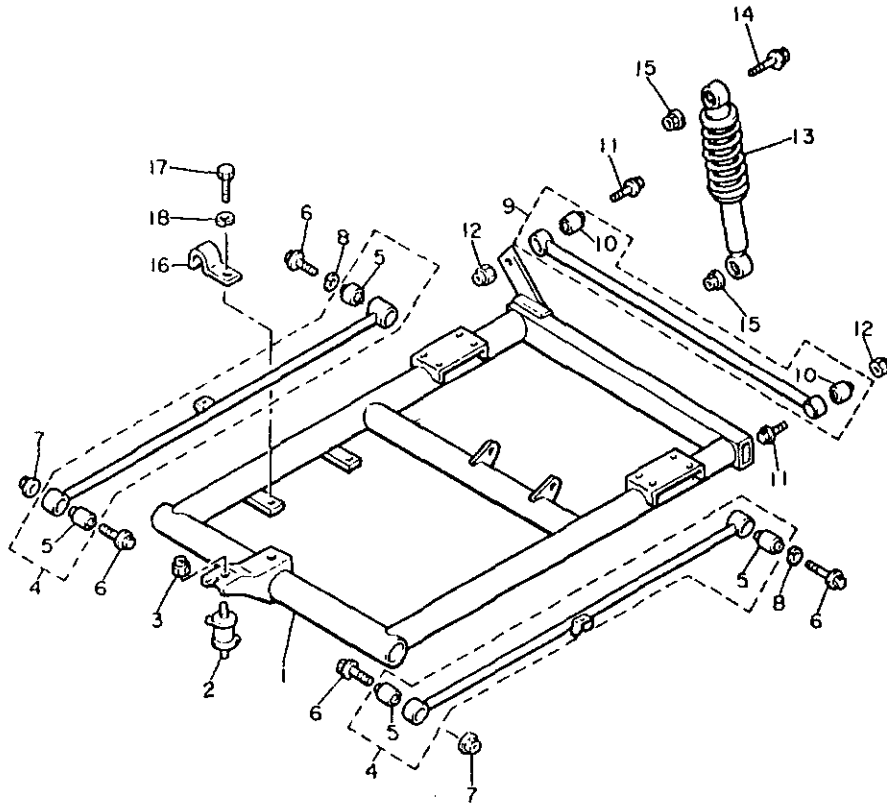


7. Applicable colors of graphics are represented in the "Remarks" column by the letter(s) appropriately picked out of the full word(s) showing such colors.

EXAMPLE

Part No.	Description	Qty	Remarks
2N4-24110-00-X5	FUEL TANK COMP.	1	MAXIM RED
3J1-24240-10	.GRAPHIC, fuel tank set	1	for MXR

FIG. 1 REAR ARM • SUSPENSION



REF. NO.	PART NO.	DESCRIPTION	Q'TY	REMARKS
1	JF3-F2110-00	REAR ARM COMP.	1	
2	J50-22123-00	BUSH 1	1	
3	90185-10115	NUT, self-locking	2	
4	J50-22171-00	ARM, rear 1	2	
5	J50-22124-00	.BUSH 2	2	
6	95812-12065	BOLT, flange	4	
7	90185-12072	NUT, self-locking	2	
8	92901-12100	WASHER, spring	2	
9	JF2-22172-00	ARM, rear 2	1	
10	J50-22124-00	.BUSH 2	2	
11	95812-12065	BOLT, flange	2	
12	90185-12072	NUT, self-locking	2	
13	JF3-22210-00	SHOCK ABSORBER ASSY, rear	2	
14	95812-12065	BOLT, flange	2	
15	90185-12072	NUT, self-locking	4	
16	90462-20186	CLAMP	2	
17	97003-06012	BOLT	2	
18	92990-06100	WASHER, spring	2	



JF3100-0010

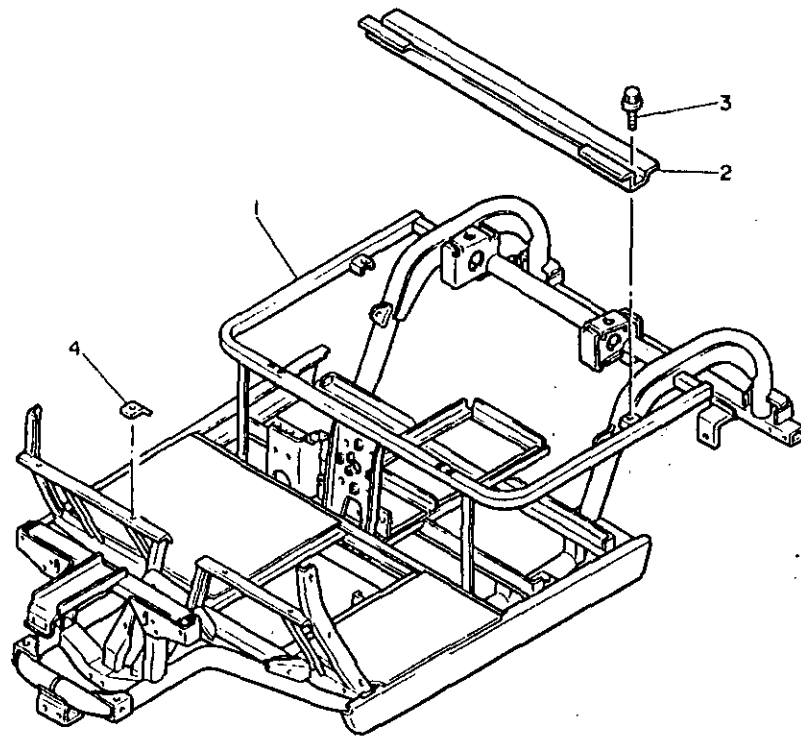


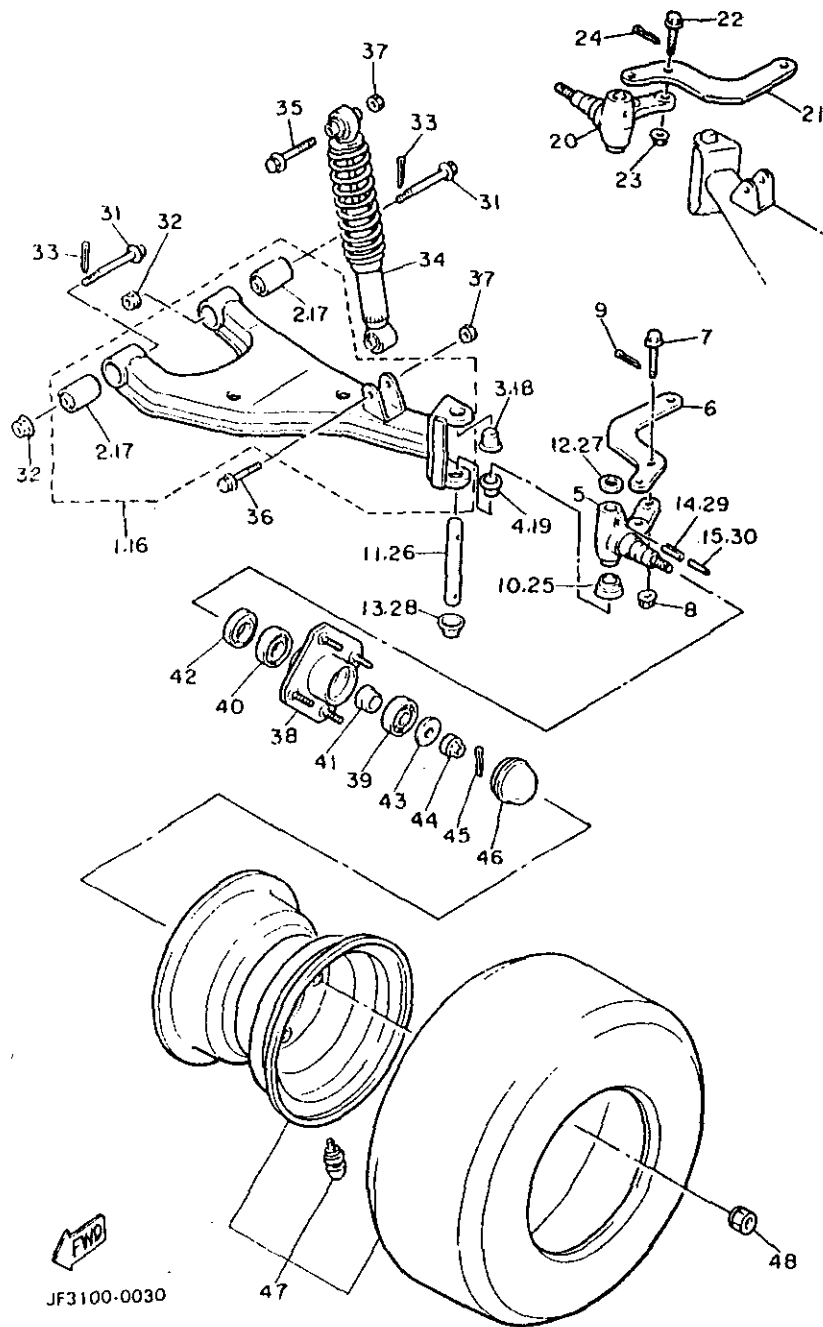
FIG. 2 FRAME

REF. NO.	PART NO.	DESCRIPTION	Q'TY	REMARKS
1	JF3-F2501-00	FRAME COMP.	1	
2	JF2-F254R-00	SUPPORT, body mounting	1	
3	95801-08016	BOLT, flange	2	
4	JF2-7814A-00	SEAL, body upper	4	



JF3100-0020

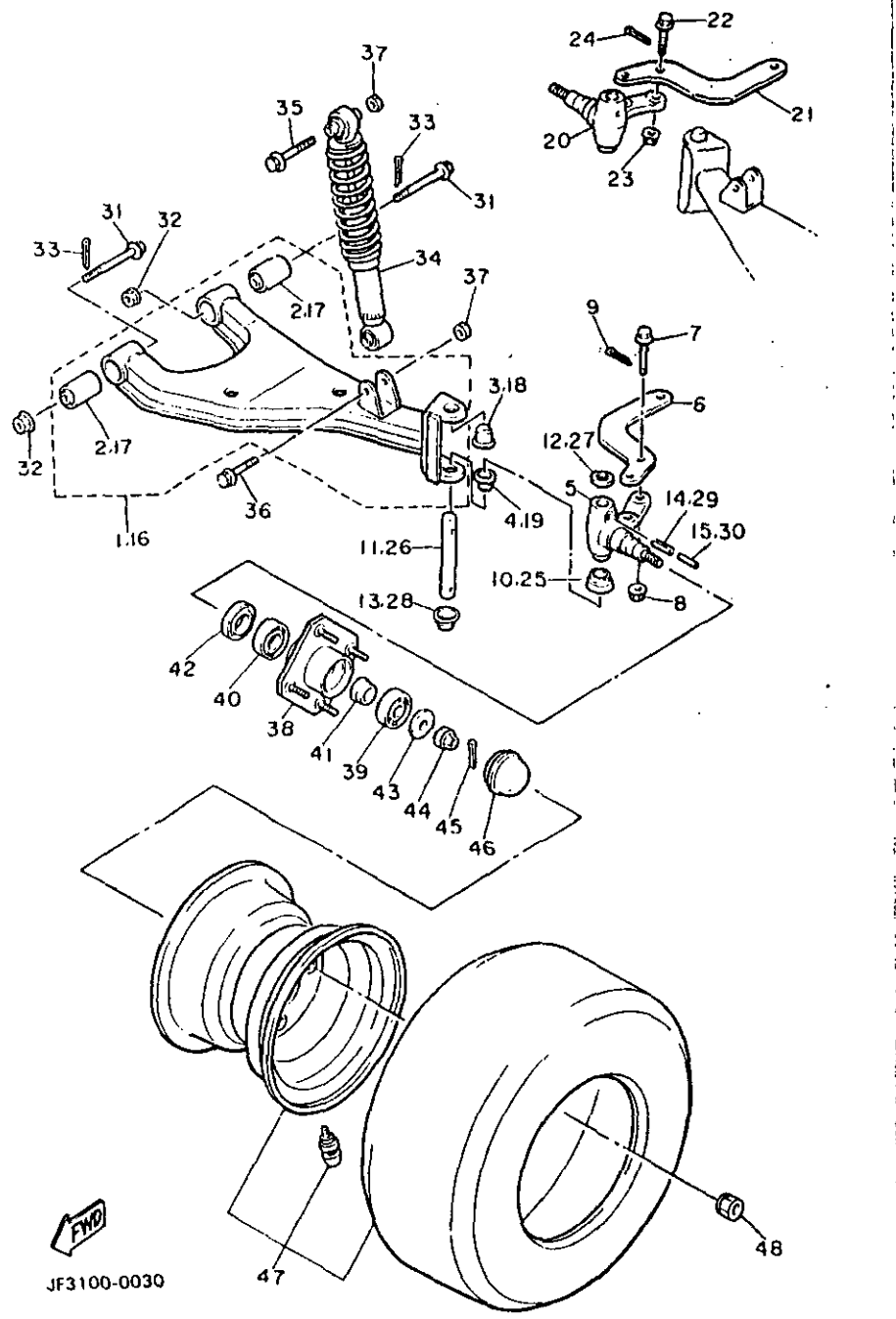
FIG. 3 FRONT SUSPENSION • WHEEL



REF. NO.	PART NO.	DESCRIPTION	Q'TY	REMARKS
1	JF2-F3570-00	FRONT LOWER ARM COMP. (LEFT)	1	
2	J38-23526-00	.BUSH	2	
3	90338-17170	PLUG	1	
4	90386-15139	BUSH	1	
5	J38-23511-01	KNUCKLE, steering 1	1	
6	J38-23512-02	ARM, knuckle 1	1	
7	90105-10360	BOLT, washer based	2	
8	90185-10115	NUT, self-locking	2	
9	91401-25020	PIN, cotter	2	
10	J38-23527-00	SEAL, dust 1	1	
11	J55-F3516-00	KING PIN, steering knuckle	1	J38-23516-00
12	90201-156J2	WASHER, plate	1	
13	J38-23528-00	SEAL, dust 2	1	
14	91609-60028	PIN, spring	1	
15	91609-35028	PIN, spring	1	
16	JF2-F3580-00	FRONT LOWER ARM COMP. (RIGHT)	1	
17	J38-23526-00	.BUSH	2	
18	90338-17170	PLUG	1	
19	90386-15139	BUSH	1	
20	J38-23521-01	KNUCKLE, steering 2	1	
21	J38-23512-02	ARM, knuckle 1	1	
22	90105-10360	BOLT, washer based	2	
23	90185-10115	NUT, self-locking	2	
24	91401-25020	PIN, cotter	2	
25	J38-23527-00	SEAL, dust 1	1	
26	J55-F3516-00	KING PIN, steering knuckle	1	J38-23516-00
27	90201-156J2	WASHER, plate	1	
28	J38-23528-00	SEAL, dust 2	1	

FIG. 3 FRONT SUSPENSION - WHEEL

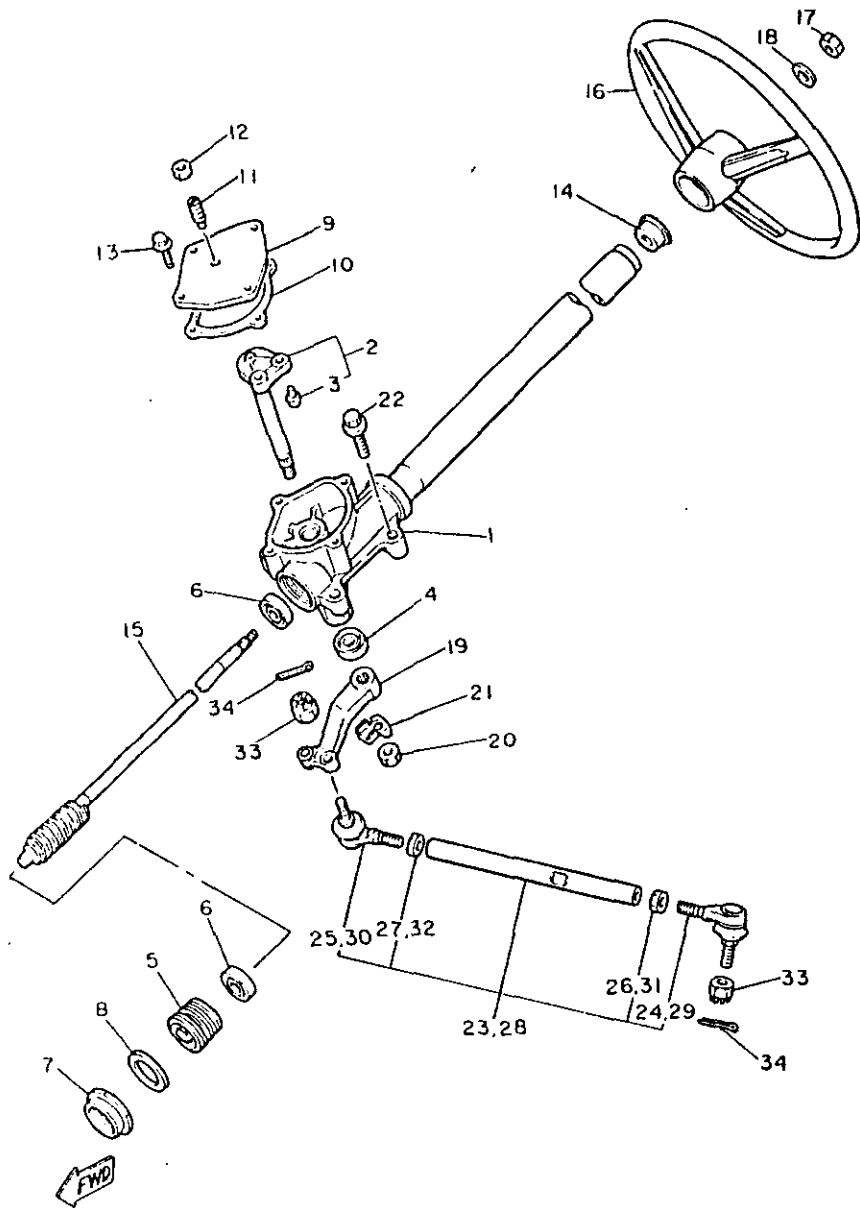
REF. NO.	PART NO.	DESCRIPTION	Q'TY	REMARKS
29	91609-60028	PIN, spring	1	
30	91609-35028	PIN, spring	1	
31	90105-10357	BOLT, washer based	4	
32	90185-10115	NUT, self-locking	4	
33	91401-25020	PIN, cotter	4	
34	JF3-23350-00	SHOCK ABSORBER ASSY	2	
35	97002-10065	BOLT	2	
36	97002-10050	BOLT	2	
37	95602-10100	NUT, u	4	
38	J38-W2511-00	HUB, front	2	
39	93306-20437	BEARING	2	
40	93306-00511	BEARING	2	
41	90387-241M7	COLLAR	2	
42	93102-30083	OIL SEAL	2	
43	90209-32271	WASHER	2	
44	95601-14100	NUT, u	2	
45	91401-25020	PIN, cotter	2	
46	J17-25118-00	COVER, hub dust	2	
47	*	FRONT WHEEL ASSY	2	LM
48	90179-12262	NUT	8	



FWD
JF3100-0030

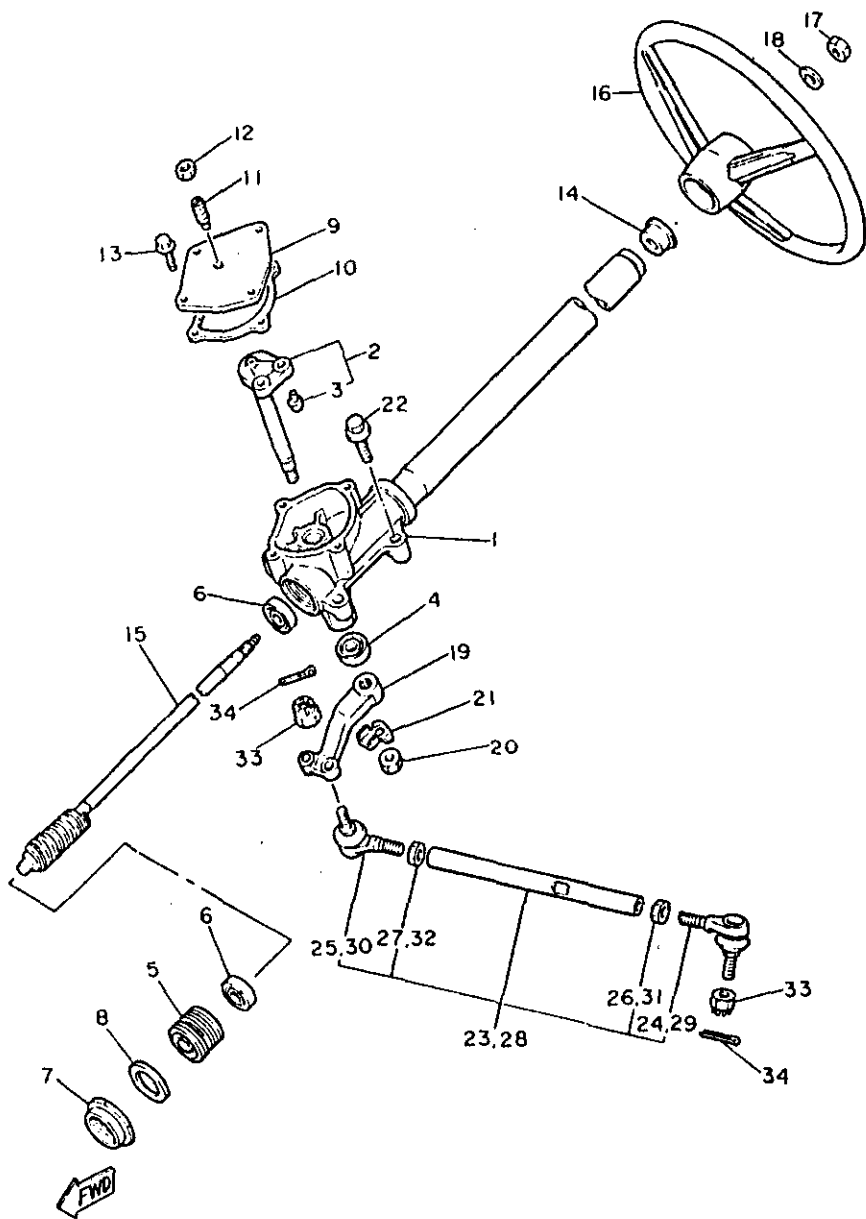
FIG. 4 STEERING

REF. NO.	PART NO.	DESCRIPTION	Q'TY	REMARKS
1	JF2-F3811-00	COLUMN, steering	1	
2	J38-23816-00	ARM, pitman	1	
3	J38-23836-00	.PIN, pitman	2	
4	93102-22314	OIL SEAL	1	
5	J55-F3876-00	BOLT	1	
6	93332-00010	BEARING	2	
7	J10-23877-00	NUT	1	
8	J10-23444-00	WASHER	1	
9	J55-23818-00	COVER, steering	1	
10	J38-23462-00	SEAL, steering	1	
11	J10-23459-00	BOLT	1	
12	90170-08024	NUT	1	
13	95801-06020	BOLT, flange	4	
14	J38-23814-00	HOLDER, handle upper	1	
15	JF2-23840-00	STEERING SHAFT ASSY	1	
16	JF2-F3838-00	WHEEL, steering	1	
17	90185-12061	NUT, self-locking	1	
18	92902-12200	WASHER, wave	1	
19	J38-23826-01	ARM, idler	1	
20	95701-16300	NUT, flange	1	
21	90215-16252	WASHER, lock	1	
22	95812-10050	BOLT, flange	4	
23	JF2-F3830-00	TIE ROD ASSY	1	
24	J38-23841-01	.JOINT, universal 1	1	
25	J38-23845-01	.JOINT, universal 2	1	
26	90170-12055	.NUT	1	
27	90170-12054	.NUT	1	
28	JF2-F3850-00	TIE ROD ASSY	1	



JF2100-0130

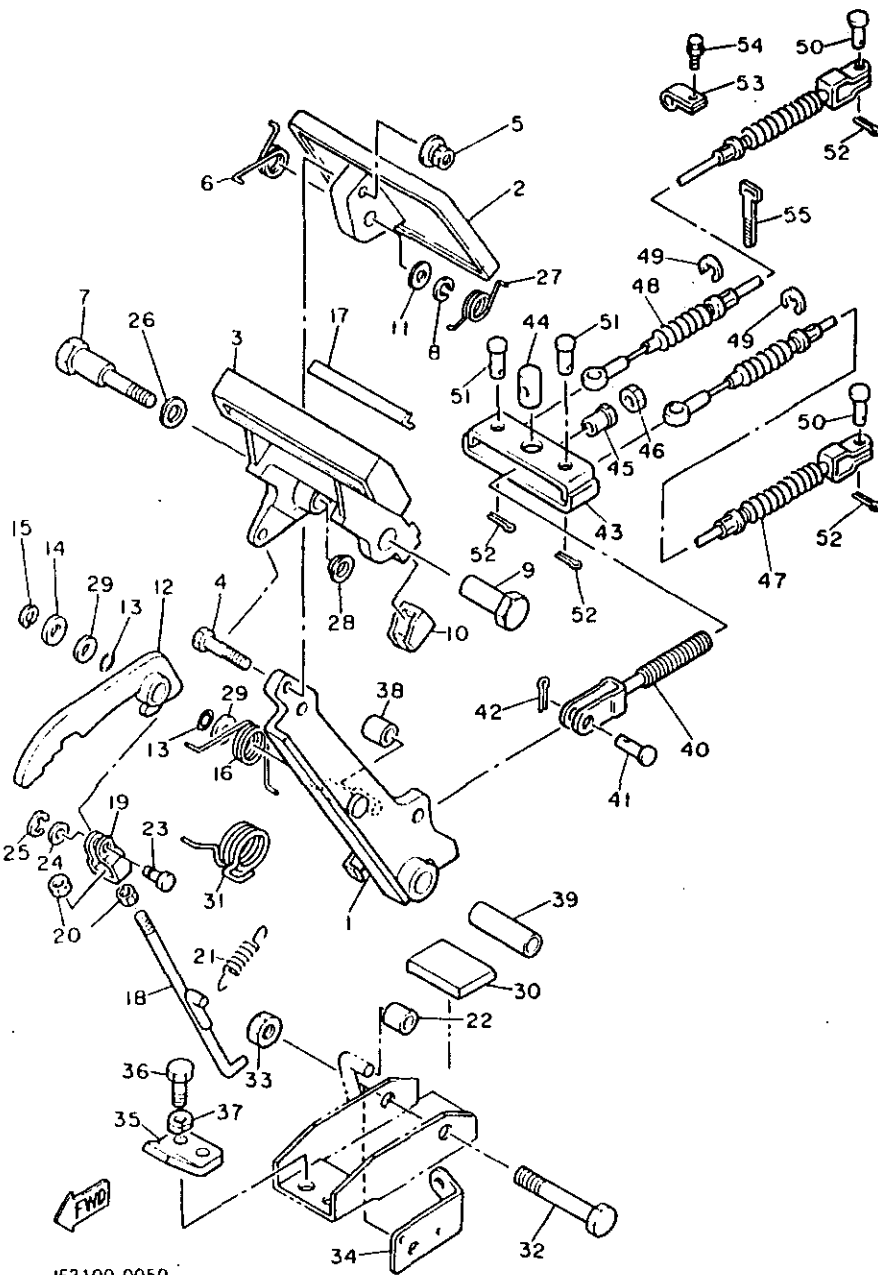
FIG. 4 STEERING



JF2100-0130

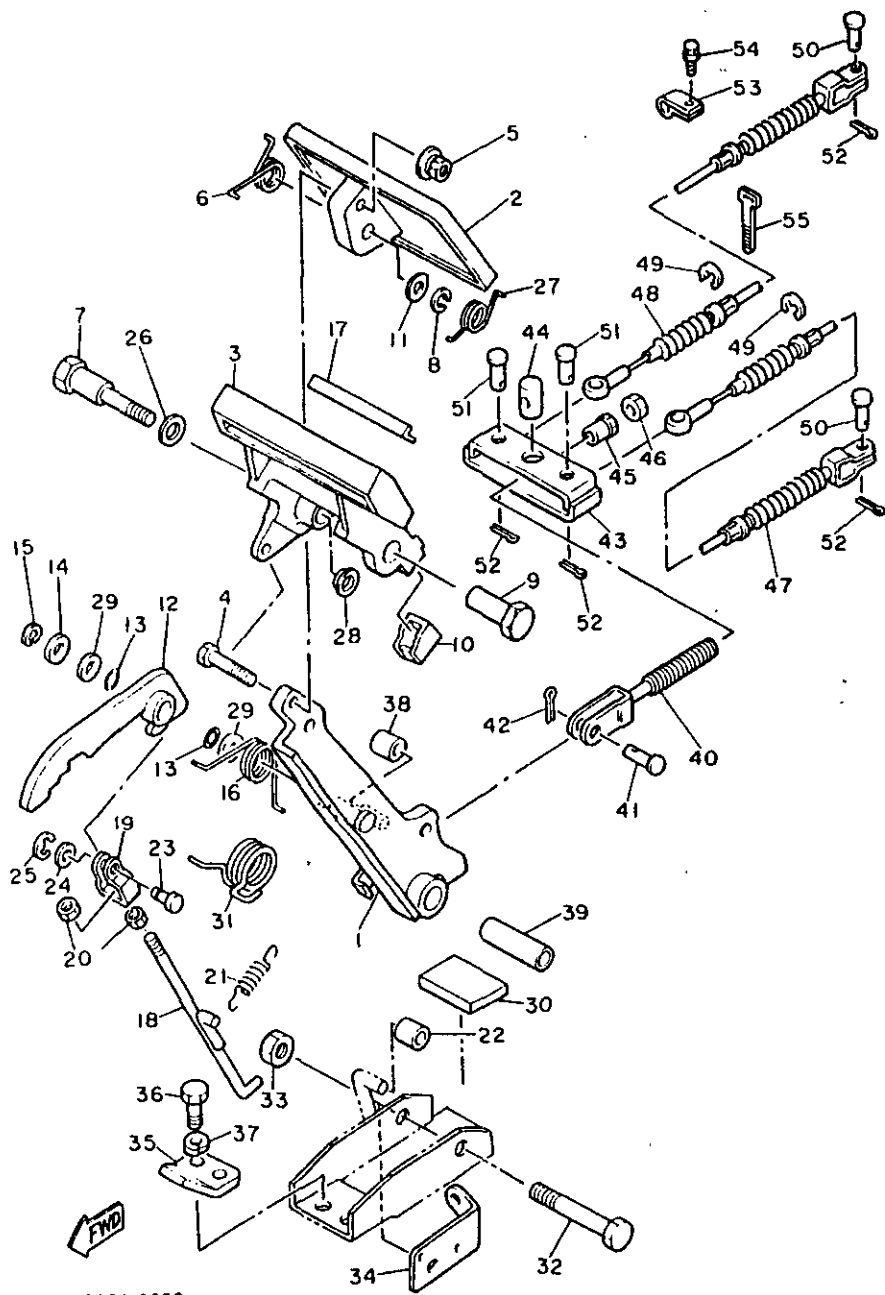
REF. NO.	PART NO.	DESCRIPTION	Q'TY	REMARKS
29	J38-23841-01	.JOINT, universal 1	1	
30	J38-23845-01	.JOINT, universal 2	1	
31	90170-12055	.NUT	1	
32	90170-12054	.NUT	1	
33	95602-10100	NUT, u	4	
34	91401-25020	PIN, cotter	4	

FIG. 5 BRAKE



JF3100-0050

REF. NO.	PART NO.	DESCRIPTION	Q'TY	REMARKS
1	J46-27250-01	BRAKE ARM COMP.	1	
2	J10-27211-00	PEDAL, brake	1	
3	J17-25670-01	PARKING PEDAL COMP.	1	
4	90101-06555	BOLT	1	
5	90179-07564	NUT	1	
6	90508-23542	SPRING, torsion	1	
7	90109-08669	BOLT	1	
8	92902-08100	WASHER, spring	1	
9	90179-08378	NUT	1	
10	J17-25679-01	DAMPER	2	
11	92990-08200	WASHER, plain	1	
12	J17-W2561-00	SECTOR, parking brake	1	
13	J17-27221-00	SEAL, shaft	2	
14	92990-10600	WASHER, plate	1	
15	99080-07600	CIRCLIP	1	
16	90508-14548	SPRING, torsion	1	
17	J17-25672-00	PAD, parking pedal	1	
18	J17-27231-00	ROD, brake	1	
19	J17-27232-00	END, rod 2	1	
20	95303-06700	NUT	2	
21	90506-12277	SPRING, tension	1	
22	J17-25673-00	DAMPER, brake	1	
23	J17-27228-00	PIN, joint	1	
24	92901-05600	WASHER, plate	1	
25	99080-04600	CIRCLIP	1	
26	90201-123F2	WASHER, plate	1	
27	90508-26557	SPRING, torsion	1	
28	90380-12105	BUSH, solid	1	

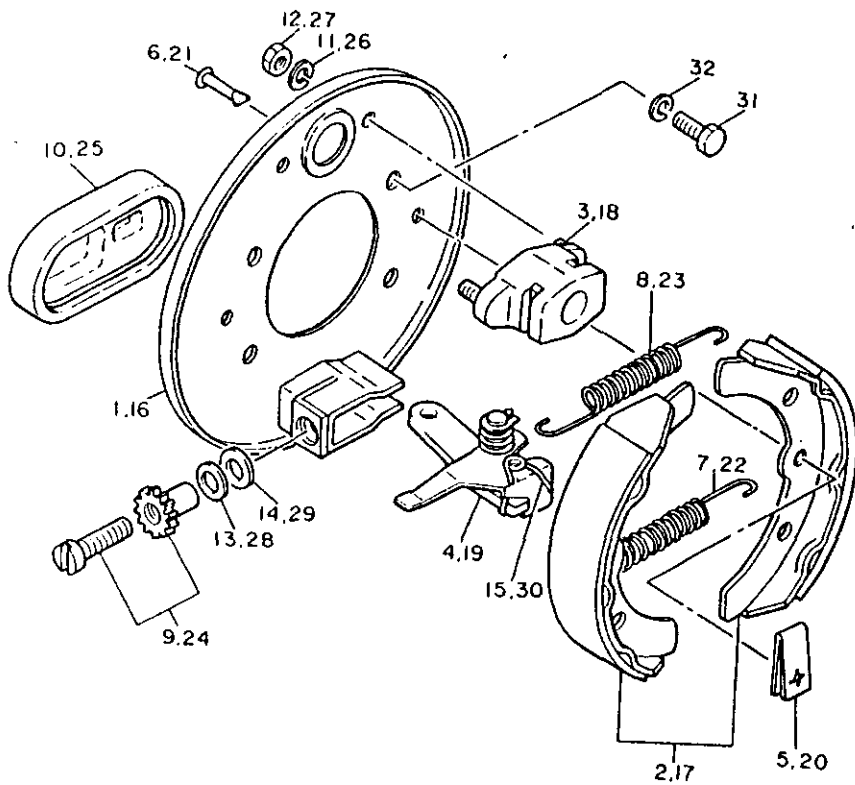


JF3100-0050

FIG. 5 BRAKE

REF. NO.	PART NO.	DESCRIPTION	Q'TY	REMARKS
29	90201-104G8	WASHER, plate	2	
30	J46-27245-00	PAD, brake pedal	1	
31	90508-40543	SPRING, torsion	1	
32	90101-10447	BOLT	1	
33	95602-10100	NUT, u	1	
34	J55-2252M-00	BRACKET, 3	1	
35	J17-27246-00	NAIL, brake	1	
36	97313-08020	BOLT	2	
37	92902-08100	WASHER, spring	2	
38	J17-25673-00	DAMPER, brake	1	
39	90387-107F8	COLLAR	1	
40	JF2-25685-00	ROD	1	
41	91701-10022	PIN, clevis	1	
42	91490-30015	PIN, cotter	1	
43	JF2-25681-00	EQUALIZER, brake	1	
44	90249-14129	PIN	1	
45	90179-08261	NUT	1	
46	95303-08700	NUT	1	
47	JF2-F6341-00	CABLE, brake	1	
48	JF2-F6351-00	CABLE, brake	1	
49	99002-09600	CIRCLIP	4	
50	91701-08018	PIN, clevis	2	
51	91701-08026	PIN, clevis	2	
52	91490-25015	PIN, cotter	4	
53	90461-12117	CLAMP	2	
54	95801-06012	BOLT, flange	2	
55	25G-83936-00	BAND, switch cord	1	

FIG. 6 BRAKE 2

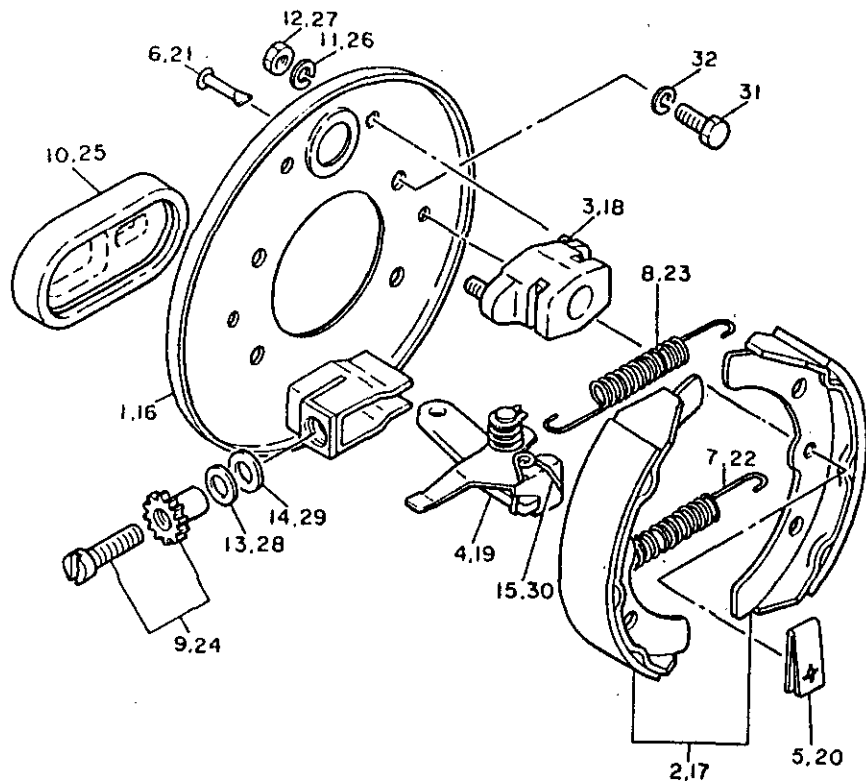


REF. NO.	PART NO.	DESCRIPTION	QTY	REMARKS
1	J17-27208-00	BACKING PLATE SUB ASSY 1	1	
2	J55-W2536-00	BRAKE SHOE SET	1	
3	J17-27206-00	ANCHOR BODY COMP.	1	
4	J38-27204-00	LEVER ASSY 1	1	
5	J10-27281-00	SPRING, shoe clamp	2	
6	J10-27282-00	PIN, shoe hold down	2	
7	90506-20281	SPRING, tension	1	
8	90506-26191	SPRING, tension	1	
9	J55-27270-00	ADJUSTER ASSY	1	
10	J10-27286-00	COVER, dust	1	
11	92990-06100	WASHER, spring	2	
12	95303-06600	NUT	2	
13	90201-121H9	WASHER, plate	1	
14	90201-121H8	WASHER, plate	1	
15	J55-25358-00	SPRING, return	1	
16	J17-27209-00	BACKING PLATE SUB ASSY 2	1	
17	J55-W2536-00	BRAKE SHOE SET	1	
18	J17-27206-00	ANCHOR BODY COMP.	1	
19	J38-27205-00	LEVER ASSY 2	1	
20	J10-27281-00	SPRING, shoe clamp	2	
21	J10-27282-00	PIN, shoe hold down	2	
22	90506-20281	SPRING, tension	1	
23	90506-26191	SPRING, tension	1	
24	J55-27260-00	ADJUSTER ASSY	1	
25	J10-27286-00	COVER, dust	1	
26	92990-06100	WASHER, spring	2	
27	95303-06600	NUT	2	
28	90201-121H9	WASHER, plate	1	



JF2100-0160

FIG. 6 BRAKE 2

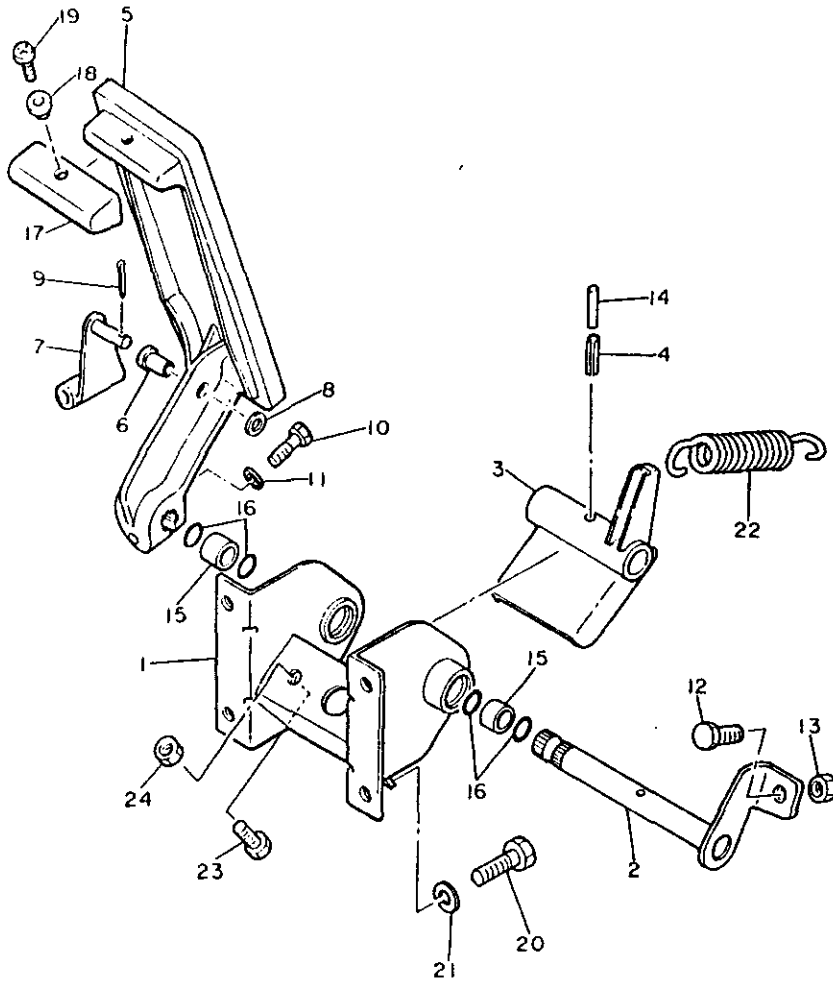


REF. NO.	PART NO.	DESCRIPTION	Q'TY	REMARKS
29	90201-121H8	WASHER, plate	1	
30	J55-25357-00	SPRING, lever return	1	
31	97012-08018	BOLT	8	
32	92902-08100	WASHER, spring	8	



JF2100-0160

FIG. 7 ACCELERATOR

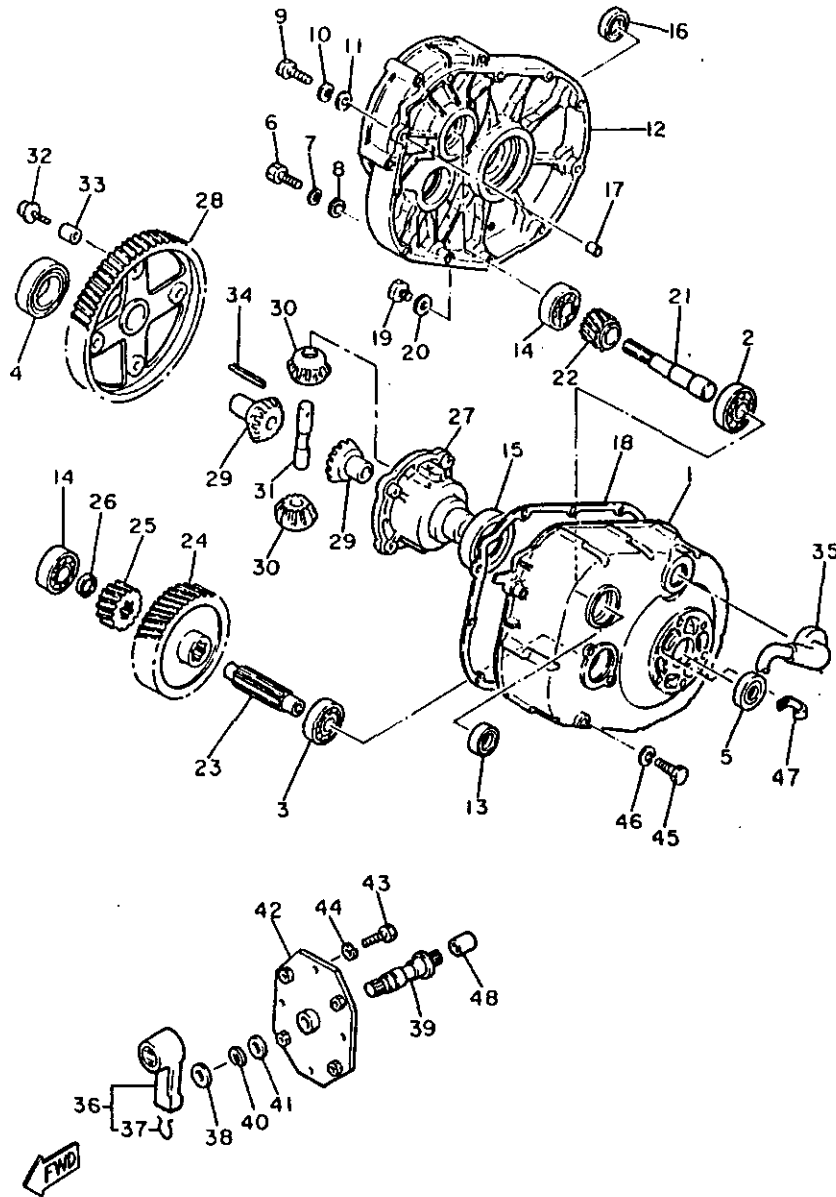


REF. NO.	PART NO.	DESCRIPTION	Q'TY	REMARKS
1	J41-27874-00	BRACKET, accelerator pedal	1	
2	J17-27853-00	SHAFT, pedal 1	1	
3	J22-27872-00	ARM, accelerator pedal	1	
4	91609-60028	PIN, spring	1	
5	JF3-27871-00	PEDAL, accelerator	1	
6	90381-06033	BUSH, solid	1	
7	J14-27815-00	LEVER, crank pedal	1	
8	92990-06600	WASHER, plate	1	
9	91402-20012	PIN, cotter	1	
10	97001-06025	BOLT	1	
11	92990-06100	WASHER, spring	1	
12	90106-08040	BOLT	1	
13	95303-08700	NUT	1	
14	91609-35028	PIN, spring	1	
15	90384-14080	BUSH, bimetal formed	2	
16	93210-14104	O-RING	4	
17	JF2-27854-00	COVER, pedal	1	
18	90387-050X4	COLLAR	1	
19	98906-05012	SCREW, bind	1	
20	97021-06016	BOLT	4	
21	92990-06100	WASHER, spring	4	
22	90506-26282	SPRING, tension	1	
23	97001-06025	BOLT	1	
24	95303-06700	NUT	1	



JF3100-0070

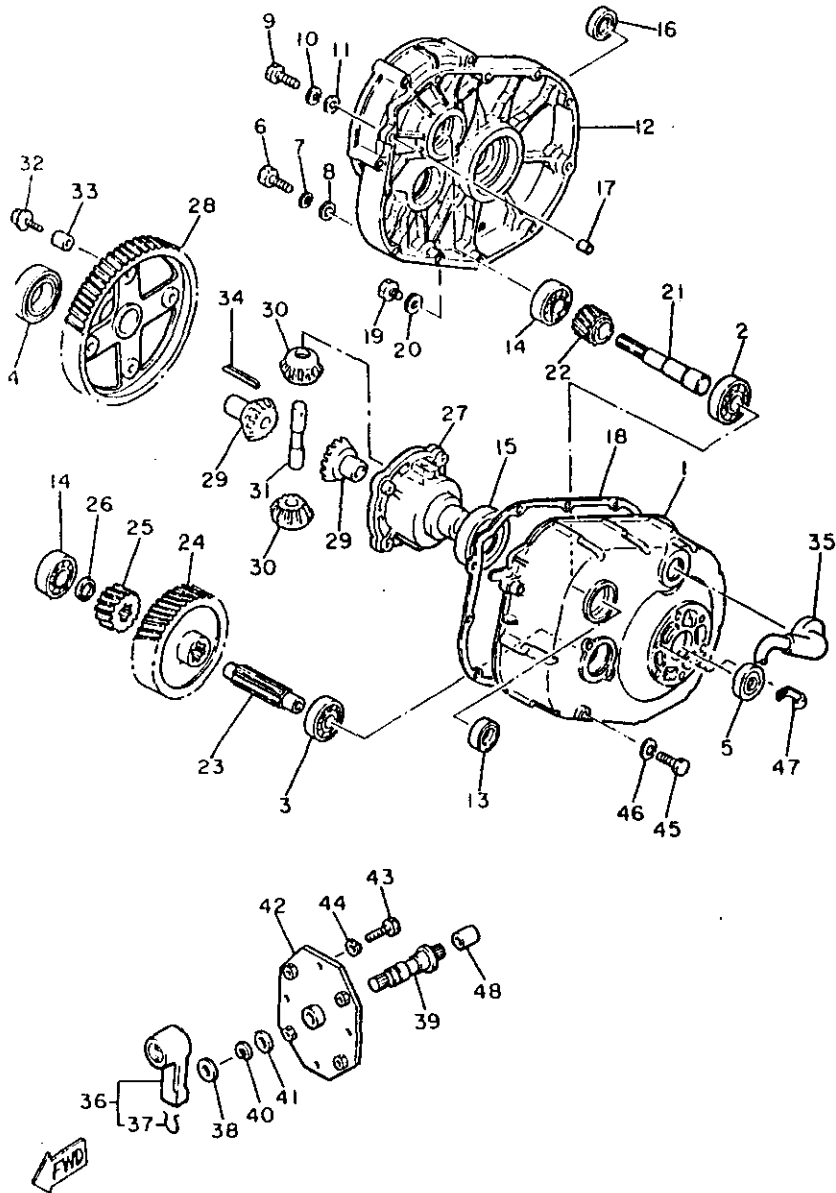
FIG. 8 TRANSMISSION 1



JF3100-0080

REF. NO.	PART NO.	DESCRIPTION	Q'TY	REMARKS
1	J14-46311-00	CASE, transmission 1	1	
2	93306-20541	BEARING (B6205)	1	
3	93306-20401	BEARING (B6204)	1	
4	93306-00803	BEARING (B6008)	1	
5	93102-22189	OIL SEAL	1	
6	97021-08035	BOLT	9	
7	92990-08100	WASHER, spring	9	
8	92901-08600	WASHER, plate	9	
9	97021-08045	BOLT	2	
10	92990-08100	WASHER, spring	2	
11	92901-08600	WASHER, plate	2	
12	J14-46312-02	CASE, transmission 2	1	
13	93102-20143	OIL SEAL	1	
14	93306-20401	BEARING (B6204)	2	
15	93306-00803	BEARING (B6008)	1	
16	93102-22189	OIL SEAL	1	
17	99510-12016	PIN, dowel	2	
18	J10-46319-00	GASKET	1	
19	90340-14036	PLUG, straight screw	2	
20	90430-14043	GASKET	2	
21	J14-46321-01	SHAFT, input	1	
22	J56-46331-00	GEAR, input 1	1	
23	J10-46351-00	SHAFT, counter	1	
24	J56-46361-00	GEAR, counter 1	1	
25	J17-46362-00	GEAR, counter 2	1	
26	90201-20272	WASHER, plate	1	
27	J38-46411-01	CASE, differential	1	
28	J41-46421-00	GEAR, ring	1	

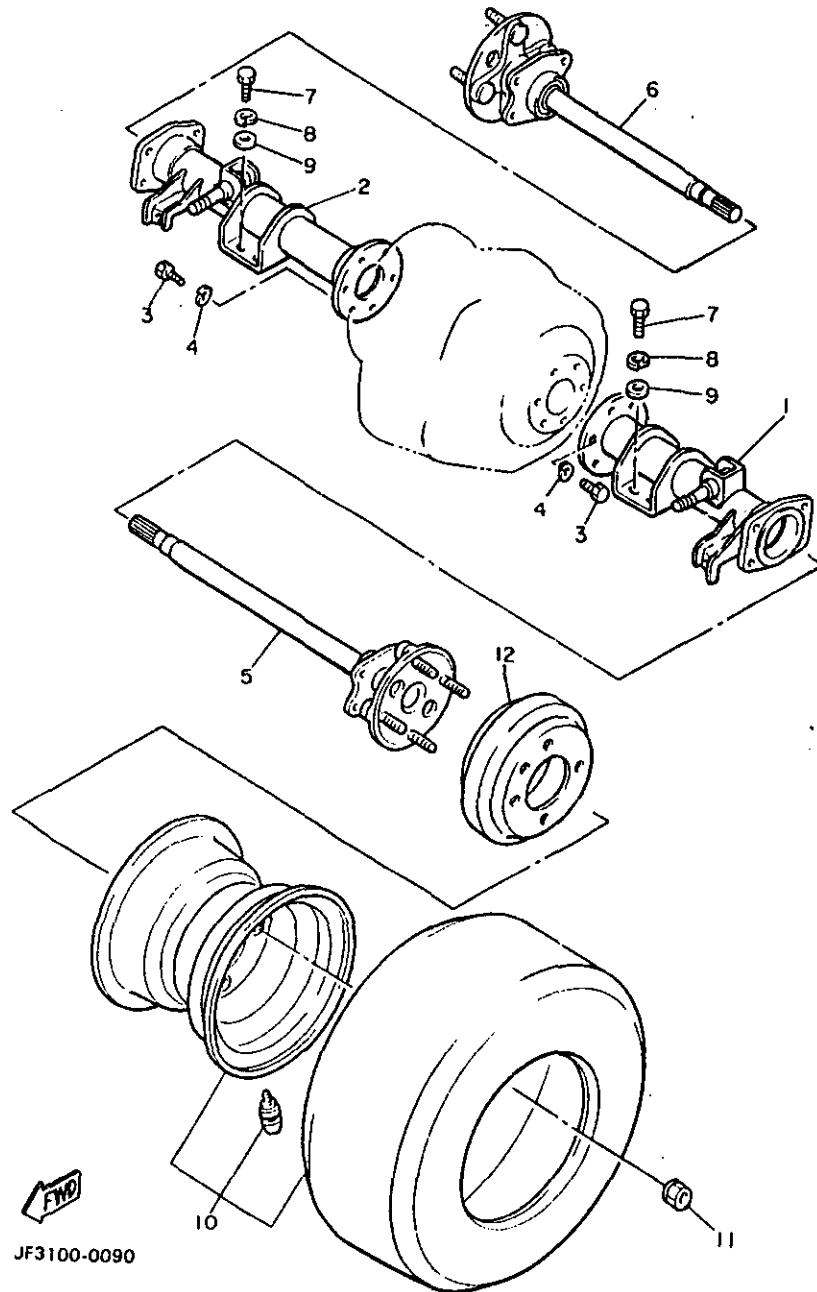
FIG. 8 TRANSMISSION 1



JF3100-0080

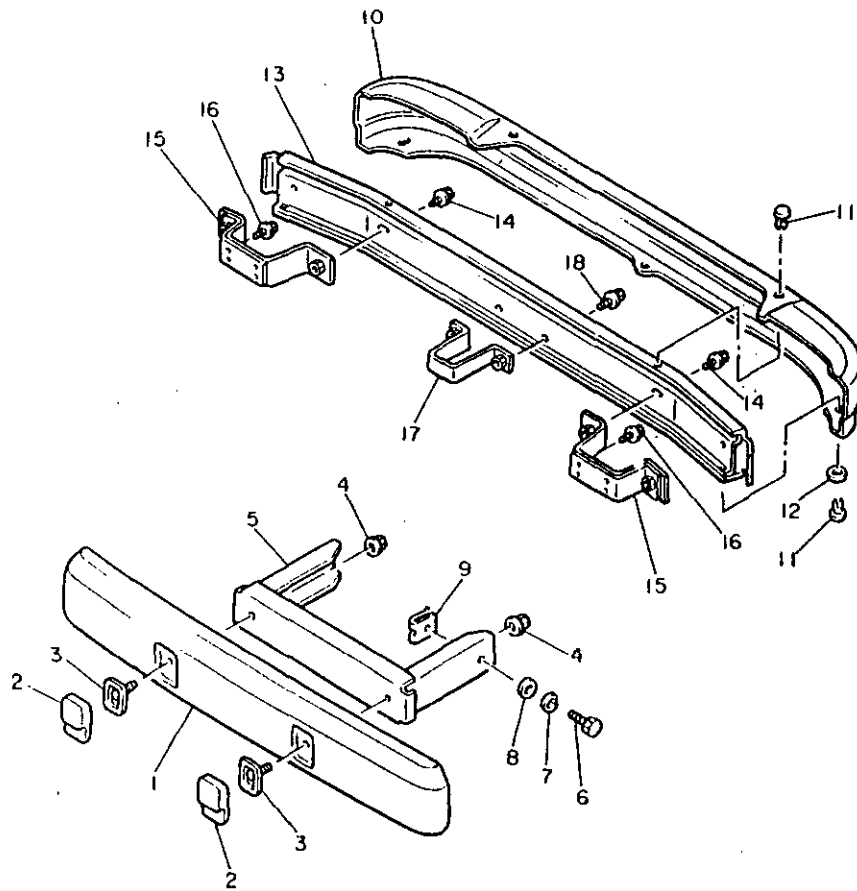
REF. NO.	PART NO.	DESCRIPTION	Q'TY	REMARKS
29	J38-46414-00	GEAR, differential side	2	
30	J38-46415-00	PINION, differential	2	
31	J38-46417-02	PIN, differential	1	
32	90105-08390	BOLT, washer based	4	
33	91812-16001	PIN, dowel	2	
34	91609-40040	PIN, spring	1	
35	835-47559-00	CAP 2	1	
36	JF2-46370-00	SHIFT ASSY	1	
37	JF2-46376-00	.SPRING	1	
38	90201-201L9	WASHER, plate	1	
39	JF3-46392-00	BAR 1	1	
40	99009-19400	CIRCLIP	1	
41	90201-19551	WASHER, plate	1	
42	JF3-46372-00	BRACKET, shift wire	1	
43	97021-06016	BOLT	4	
44	92990-06100	WASHER, spring	4	
45	97011-10020	BOLT	2	
46	92901-10100	WASHER, spring	2	
47	90465-08316	CLAMP	1	
48	J41-46394-00	JOINT	1	

FIG. 9 REAR AXLE . WHEEL



REF. NO.	PART NO.	DESCRIPTION	Q'TY	REMARKS
1	JF3-46540-01	REAR AXLE HOUSING COMP.	1	
2	JF3-46550-00	REAR AXLE HOUSING COMP. 2	1	
3	97011-08025	BOLT	12	
4	92902-08100	WASHER, spring	12	
5	JF3-46510-00	REAR AXLE SHAFT COMP.	1	
6	JF3-46520-00	REAR AXLE SHAFT COMP. 2	1	
7	97011-10020	BOLT	8	
8	92901-10100	WASHER, spring	8	
9	92990-10600	WASHER, plate	8	
10	*	FRONT WHEEL ASSY	2	LM
11	90179-12262	NUT	8	
12	J55-G6521-00	DRUM	2	J17-46521-00

FIG. 10 BUMPER

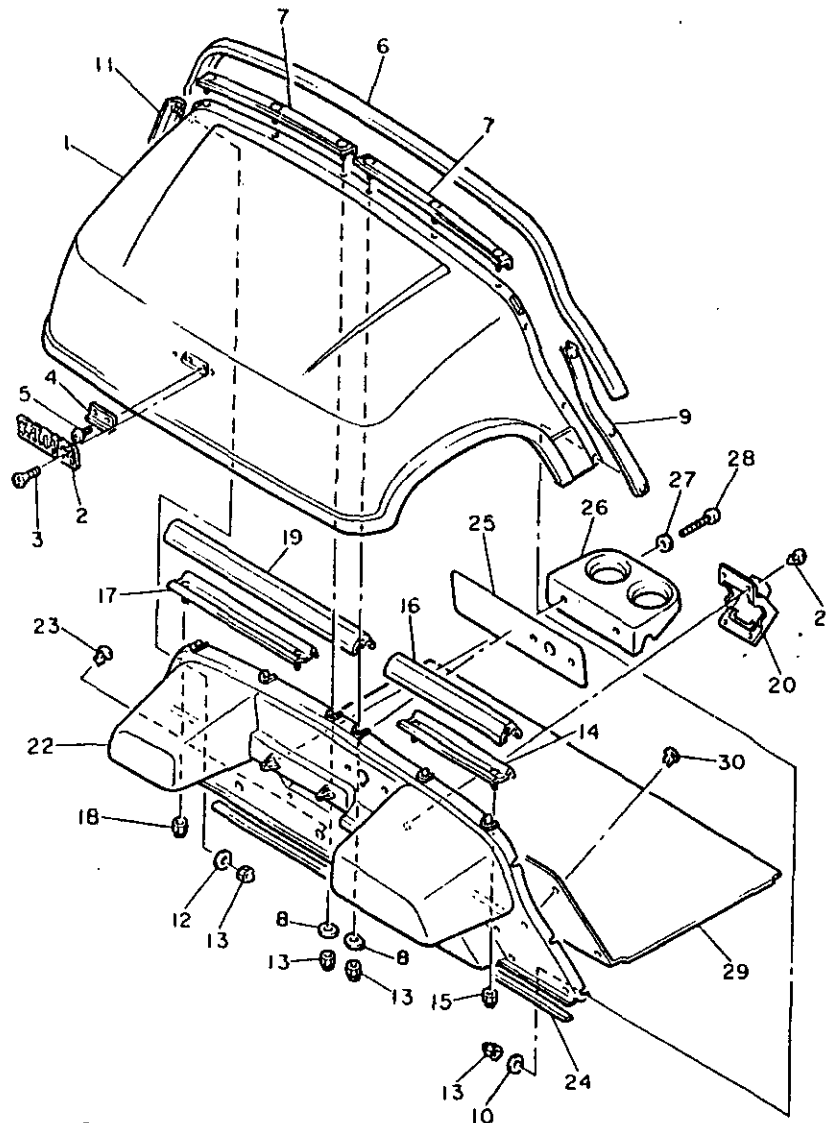


REF. NO.	PART NO.	DESCRIPTION	Q'TY	REMARKS
1	JF2-K8163-00	COVER, bumper	1	
2	JF2-77517-00	CAP	2	
3	JF2-77527-00	PLATE, back up	2	
4	95706-08500	NUT, flange	2	
5	JF2-K7511-00	BUMPER, front 1	1	
6	97313-08020	BOLT	2	
7	92902-08100	WASHER, spring	2	
8	92990-08600	WASHER, plate	2	
9	JF2-77528-00	NUT	2	
10	JF2-K817U-00	COVER, rear bumper	1	
11	90267-63047	RIVET, blind	5	
12	90201-063J2	WASHER, plate	2	
13	JF2-K8107-00	BUMPER SUB-ASSY, rear	1	
14	95816-08016	BOLT, flange	4	
15	JF2-K8174-00	STAY, rear bumper	2	
16	95816-08016	BOLT, flange	6	
17	JF2-K7521-00	STOPPER, 1	1	
18	95816-08016	BOLT, flange	2	



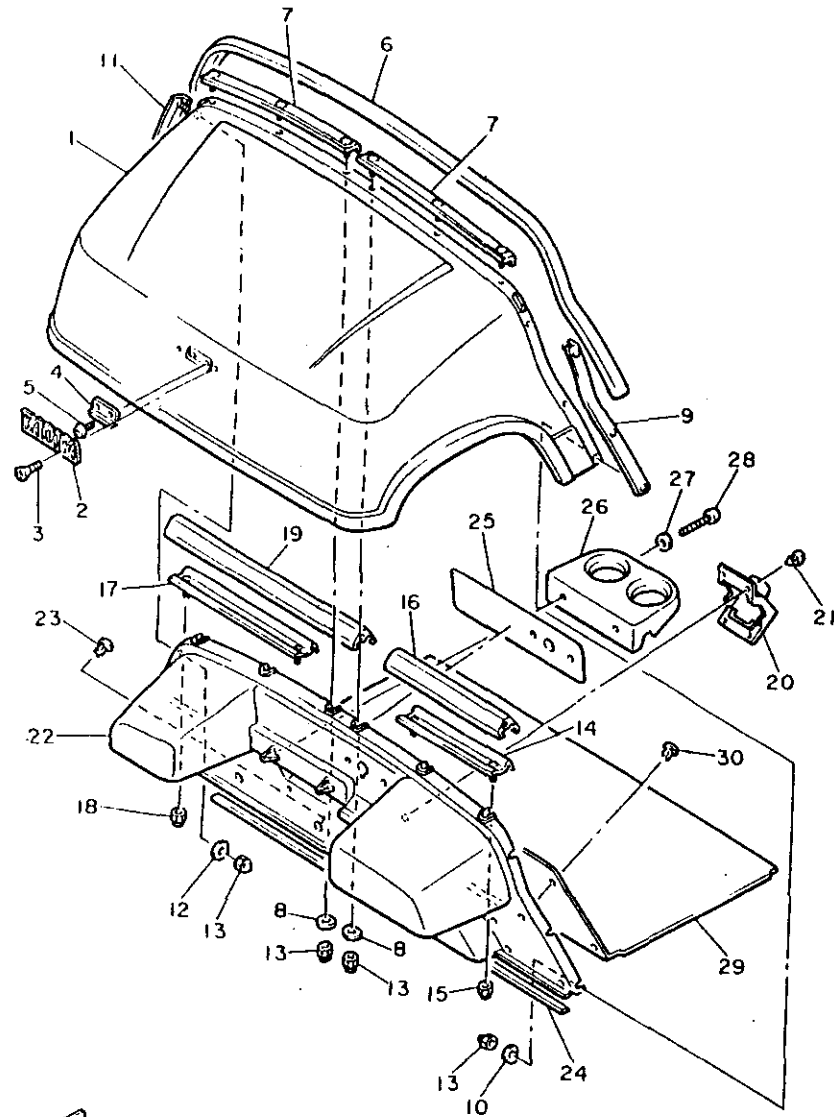
JF2100-0230

FIG. 11 BODY



REF. NO.	PART NO.	DESCRIPTION	Q'TY	REMARKS
1	JF2-K8115-00	COWL, front	1	
2	J38-24161-00	EMBLEM 1	1	
3	90162-04002	SCREW, tapping	2	
4	JF2-K811G-00	BOLT, cowl fitting	1	
5	98980-06016	SCREW, bind	2	
6	JF2-7811V-00	PROTECTOR 1	1	
7	JF2-K8261-00	PLATE, body protect 1	2	
8	JF2-78117-00	PLATE 1	6	
9	JF2-K8262-00	PLATE, body protect 2	1	
10	JF2-78117-00	PLATE 1	3	
11	JF2-K8263-00	PLATE, body prtect 3	1	
12	JF2-78117-00	PLATE 1	3	
13	90176-06069	NUT, crown	12	
14	JF2-K8264-00	PLATE, body protect 4	1	
15	95601-06100	NUT, u	2	
16	JF2-7811W-00	PROTECTOR 2	1	
17	JF2-K8265-00	PLATE, body protect 5	1	
18	95601-06100	NUT, u	2	
19	JF2-7811X-00	PROTECTOR 3	1	
20	JF2-78273-00	COVER, hole	1	
21	90269-11042	RIVET	4	
22	JF2-K8114-00	PANEL, front	1	
23	90269-08066	RIVET	3	
24	JF2-7815G-00	SEAL, front storage	1	
25	JF3-77768-00	LABEL, warning	1	
26	JF2-K835E-00	HOLDER, beverage	1	
27	90201-060A3	WASHER, plate	2	
28	97702-60130	SCREW, tapping	2	

FIG. 11 BODY

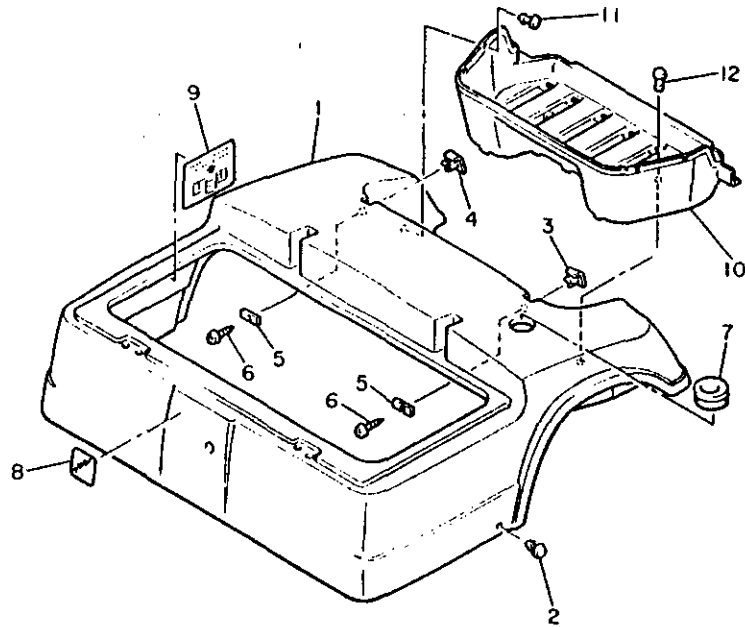


REF. NO.	PART NO.	DESCRIPTION	Q'TY	REMARKS
29	JF2-K8233-00	MAT, main floor 3	1	
30	90267-63047	RIVET, blind	11	



JF2100-0240

FIG. 12 BODY 2

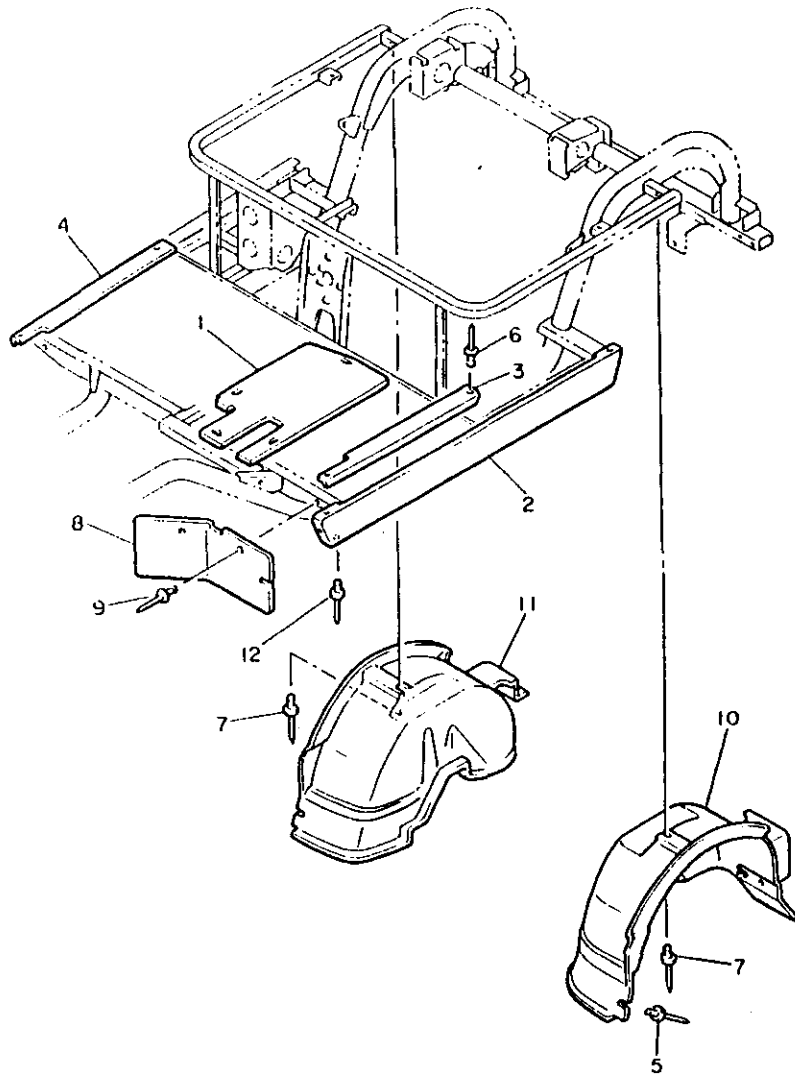


REF. NO.	PART NO.	DESCRIPTION	Q'TY	REMARKS
1	JF3-K8142-00	PANEL, rear body	1	
2	90269-08067	RIVET	2	
3	JF2-K8283-00	COVER, 3	1	
4	JF2-K8284-00	COVER, 4	1	
5	JF2-78118-00	PLATE 2	2	
6	97780-60116	SCREW, tapping	2	
7	90480-85523	GROMMET	1	
8	JF2-77741-00	INDICATOR 1	1	
9	JF3-77765-00	LABEL, warning 5	1	
10	JF2-K8237-00	COVER, rear floor	1	
11	90269-08066	RIVET	7	
12	90267-63047	RIVET, blind	2	



JF3100-0120

FIG. 13 BODY FITTING

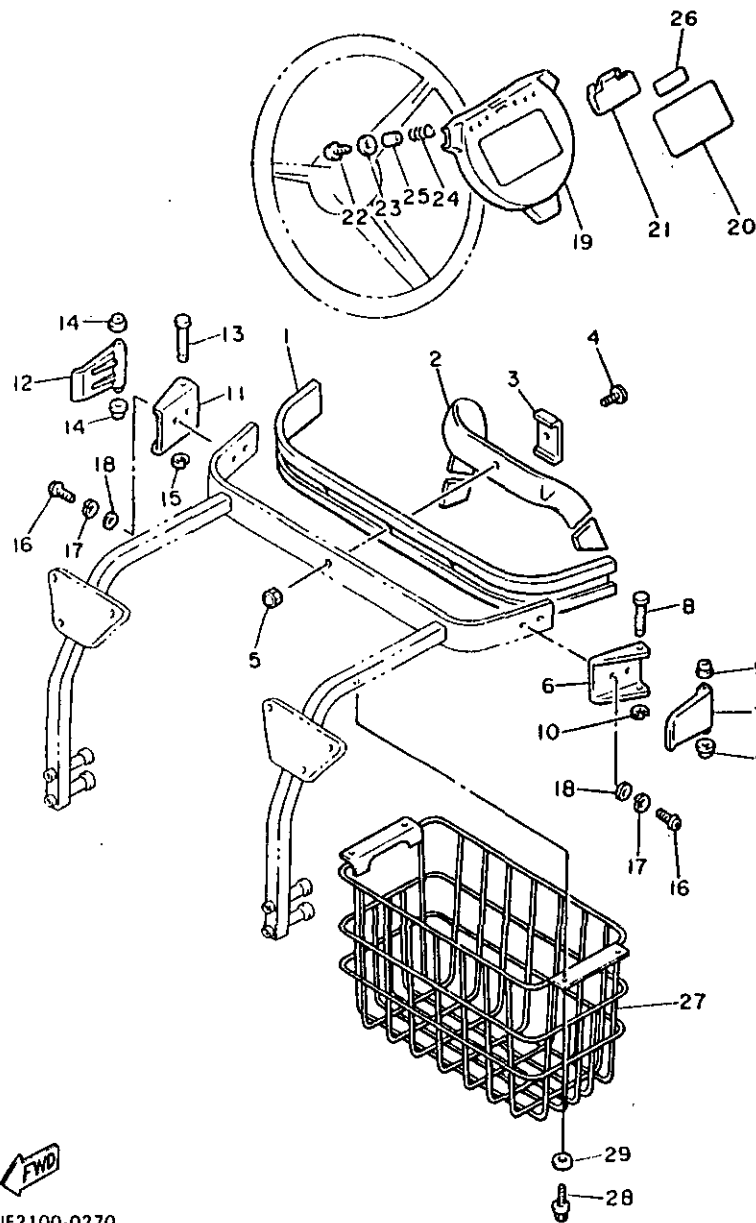


REF. NO.	PART NO.	DESCRIPTION	Q'TY	REMARKS
1	JF2-K8271-00	SERVICE LID, pedal	1	
2	JF2-K818A-00	PROTECTOR, side plate	2	
3	JF2-K8215-00	PLATE, side trim	1	
4	JF2-K821F-00	PLATE, side trim	1	
5	90267-48086	RIVET, blind	4	
6	90267-48154	RIVET, blind	6	
7	90267-48086	RIVET, blind	6	
8	JF2-K8187-00	FLAP, front fender	2	
9	90267-48101	RIVET, blind	4	
10	JF2-K8191-00	PANEL, rear fender 1	1	
11	JF2-K8192-00	PANEL, rear fender 2	1	
12	90267-48101	RIVET, blind	6	



JF3100-0130

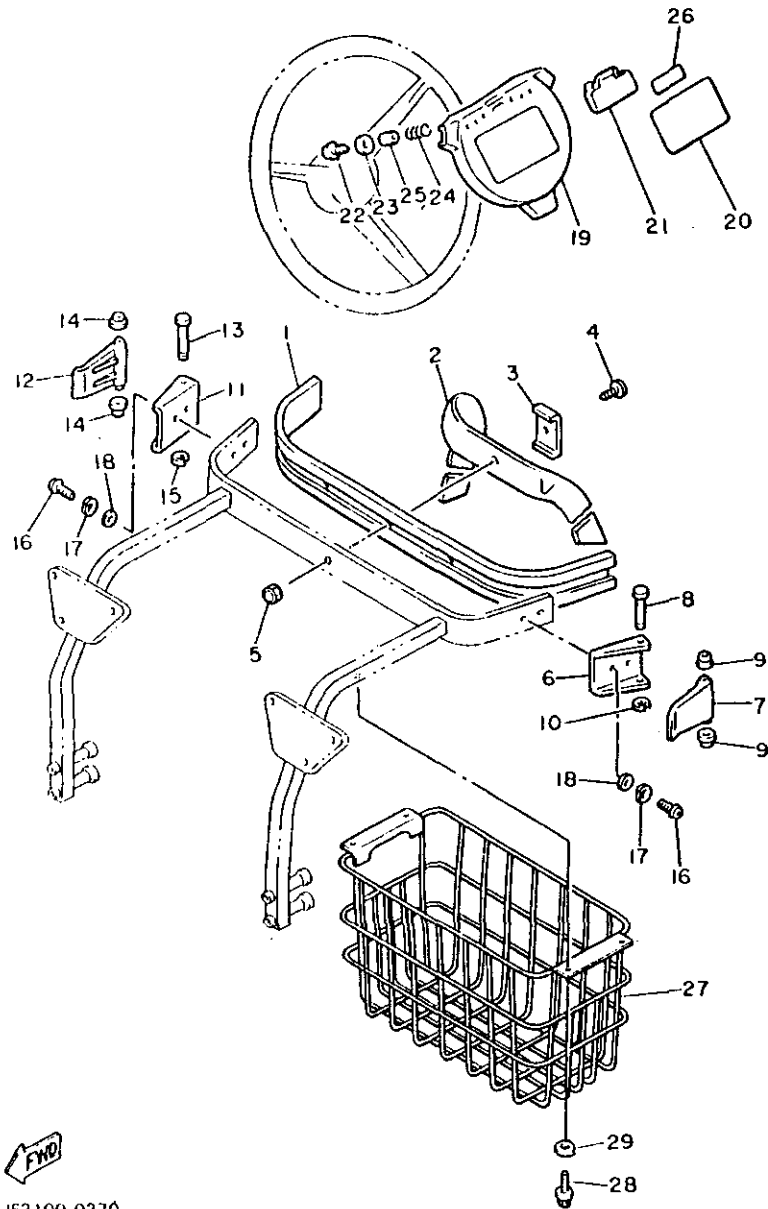
FIG. 14 CARRIER



REF. NO.	PART NO.	DESCRIPTION	Q'TY	REMARKS
1	JF2-K8356-00	PAD, bag support	1	
2	JF2-K8355-00	BAND	1	
3	J38-78367-00	PLATE, anchor	1	
4	98980-06016	SCREW, bind	1	
5	95380-06800	NUT	1	
6	J17-78157-00	BASE, lock	1	
7	J17-78368-00	LEVER, lock	1	
8	J17-78369-00	PIN, lever	1	
9	90386-06108	BUSH	2	
10	99080-05600	CIRCLIP	1	
11	J17-78157-00	BASE, lock	1	
12	J17-78368-00	LEVER, lock	1	
13	J17-78369-00	PIN, lever	1	
14	90386-06108	BUSH	2	
15	99080-05600	CIRCLIP	1	
16	92580-06010	SCREW, pan head	4	
17	92990-06100	WASHER, spring	4	
18	92990-06200	WASHER, plain	4	
19	J55-K8357-00	HOLDER 1	1	J38-78357-00
20	J50-77762-00	LABEL, warning 2	1	
21	J55-K8358-00	HOLDER 2	1	J38-78358-01
22	97706-40525	SCREW, tapping	2	
23	90201-044A2	WASHER, plate	2	
24	90502-10013	SPRING, conical	2	
25	90387-046N7	COLLAR	2	
26	J51-77763-00	LABEL, warning 3	1	
27	JF2-K8340-01	LUGGAGE RACK ASSY., rear	1	
28	95805-08016	BOLT, flange	2	



FIG. 14 CARRIER

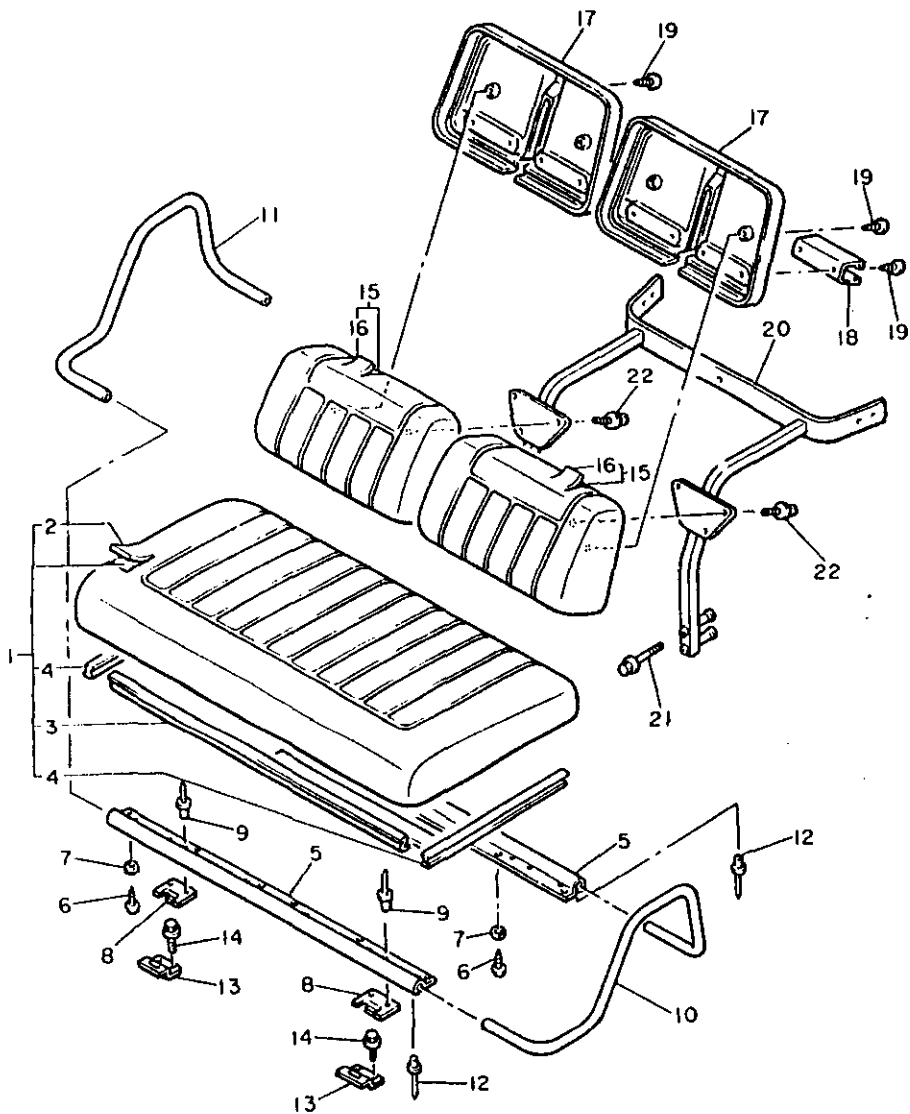


REF. NO.	PART NO.	DESCRIPTION	Q'TY	REMARKS
29	90201-08103	WASHER, plate	2	



JF2100-0270

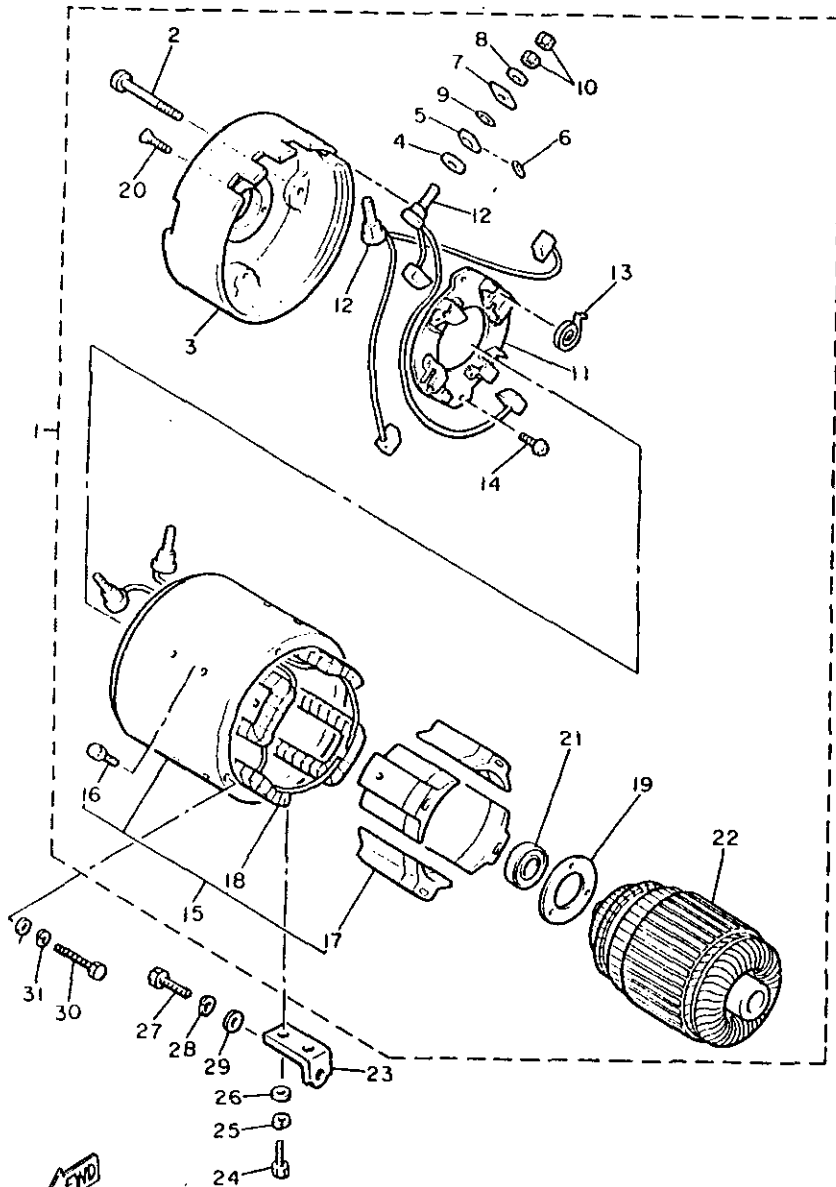
FIG. 15 SEAT



REF. NO.	PART NO.	DESCRIPTION	Q'TY	REMARKS
1	JF2-K8401-01	SEAT SUB-ASSY,cushion	1	
2	JF2-K8404-09	.COVER, seat	1	
3	JF2-K8425-01	.SEAL, seat	1	
4	JF2-K842A-01	.SEAL, seat 2	2	
5	JF2-K8121-01	REINFORCEMENT 1	2	
6	97780-60125	SCREW, tapping	12	
7	90201-06M02	WASHER, plate	12	
8	JF2-K8426-00	HINGE, seat 1	2	
9	90267-48084	RIVET, blind	4	
10	JF2-K8361-01	ARM REST 1	1	
11	JF2-K8362-01	ARM REST 2	1	
12	90267-48084	RIVET, blind	8	
13	JF2-K8427-00	HINGE, seat 2	2	
14	95805-06020	BOLT, flange	4	
15	JF2-K8402-01	SEAT SUB ASSY, back	2	
16	JF2-K841G-09	.COVER, seat back 2	1	
17	JF2-K8413-00	COVER, seat back	2	
18	J55-K835A-00	HOLDER, ball	2	J38-7835A-01
19	97780-60325	SCREW, tapping	12	
20	JF2-K8423-02	SUPPORT, seat back	1	
21	95815-08075	BOLT, flange	4	
22	95805-06020	BOLT, flange	6	

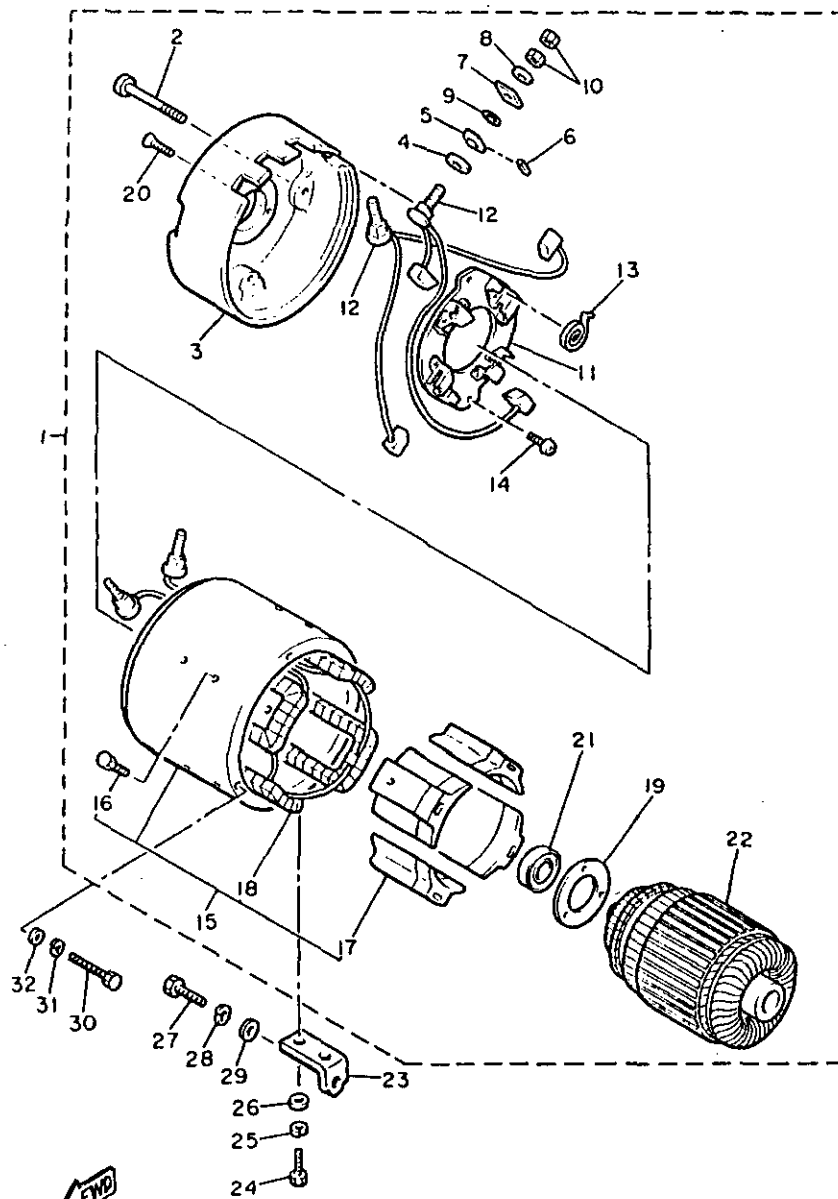


FIG. 16 STARTING MOTOR



REF. NO.	PART NO.	DESCRIPTION	Q'TY	REMARKS
1	J56-H1890-00	MOTOR ASSY	1	
2	J56-H1828-00	.BOLT 2	2	
3	J56-H1822-00	.BRACKET, starting motor	1	
4	J56-H1824-00	.WASHER 2	4	
5	J56-H182G-00	.BUSH, terminal	4	
6	J56-H1861-00	.GASKET	4	
7	J56-H1843-00	.WASHER 1	4	
8	J56-H1894-00	.WASHER, special	4	
9	J56-H1847-00	.O-RING	4	
10	J56-H182A-00	.NUT	8	
11	J56-H1840-00	.BRUSH HOLDER ASSY	1	
12	J56-H1801-00	.BRUSH SET	2	
13	J56-H1813-00	.SPRING, brush	4	
14	J56-H1848-00	.SCREW, brush holder	4	
15	J56-H1810-00	.STATOR ASSY	1	
16	J56-H1828-00	..BOLT 2	8	
17	J56-H135G-00	..POLE, piece	4	
18	J56-H1160-00	..FIELD COIL ASSY	1	
19	J56-H1856-00	.BEARING	1	
20	J56-H1846-00	.SCREW	3	
21	J56-H1857-00	.RETAINER	1	
22	J56-H1850-00	.ARMATURE ASSY	1	
23	J14-81823-01	STAY, starting motor	1	
24	97021-06016	BOLT	2	
25	92990-06100	WASHER, spring	2	
26	92990-06600	WASHER, plate	2	
27	97011-08016	BOLT	1	
28	92902-08100	WASHER, spring	1	

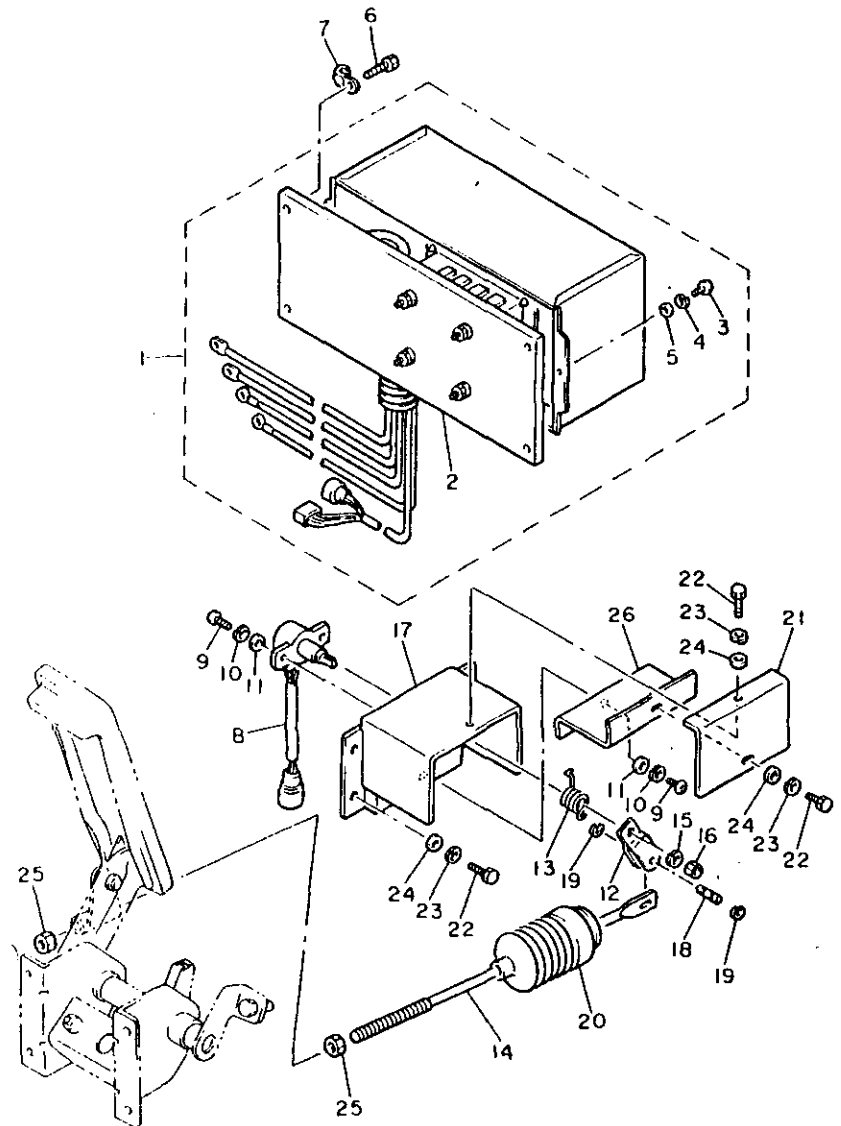
FIG. 16 STARTING MOTOR



JF3100-0160

REF. NO.	PART NO.	DESCRIPTION	Q'TY	REMARKS
29	92990-08600	WASHER, plate	1	
30	97322-06055	BOLT	3	
31	92990-06100	WASHER, spring	3	
32	90201-06643	WASHER, plate	3	

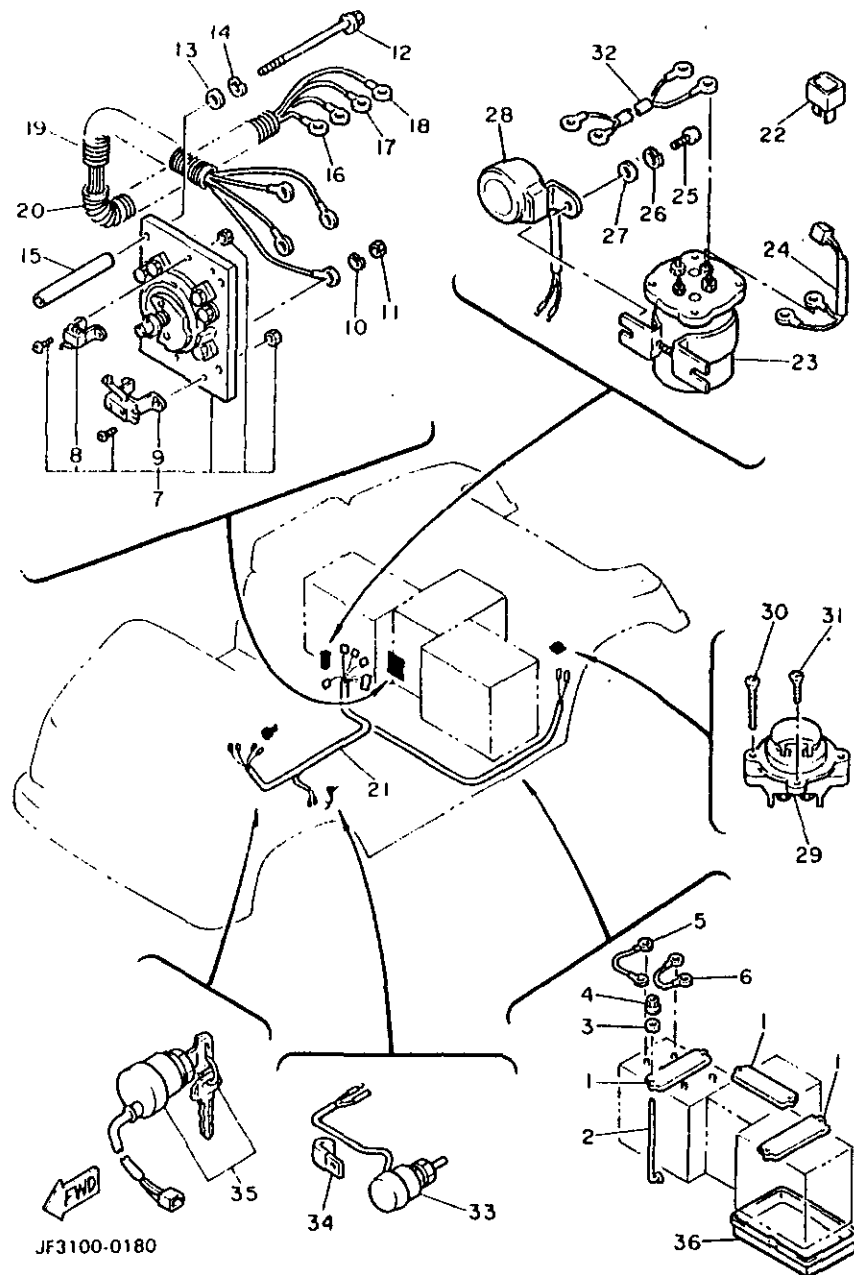
FIG. 17 CONTROLLER 1



JF3100-0170

REF. NO.	PART NO.	DESCRIPTION	Q'TY	REMARKS
1	JF3-86510-01	MOTER CONTROL UNIT ASSY	1	
2	JF3-86501-01	.MOTOR CONTROL UNIT	1	
3	98501-05018	.SCREW, pan head	3	
4	92990-05100	.WASHER, spring	3	
5	92901-05600	.WASHER, plate	3	
6	95023-06016	BOLT	4	
7	90465-06038	CLAMP	1	
8	JF3-85885-00	THROTTLE SENSOR ASSY	1	
9	98501-05018	SCREW, pan head	3	
10	92990-05100	WASHER, spring	3	
11	92901-05600	WASHER, plate	3	
12	JF3-2625H-00	ARM, throttle	1	
13	JF3-27825-00	SPRING, return	1	
14	JF3-27241-00	ROD, joint	1	
15	92990-06100	WASHER, spring	1	
16	95303-08600	NUT	1	
17	JF3-27981-00	BRACKET, throttle	1	
18	JF3-27813-00	PIN, pedal crank	1	
19	99080-04600	CIRCLIP	2	
20	JF3-27486-00	COVER 1	1	
21	JF3-27487-00	COVER 2	1	
22	97002-05016	BOLT	6	
23	92990-05100	WASHER, spring	6	
24	92901-05600	WASHER, plate	6	
25	95303-08700	NUT	2	
26	JF3-27445-00	PLATE 1	1	

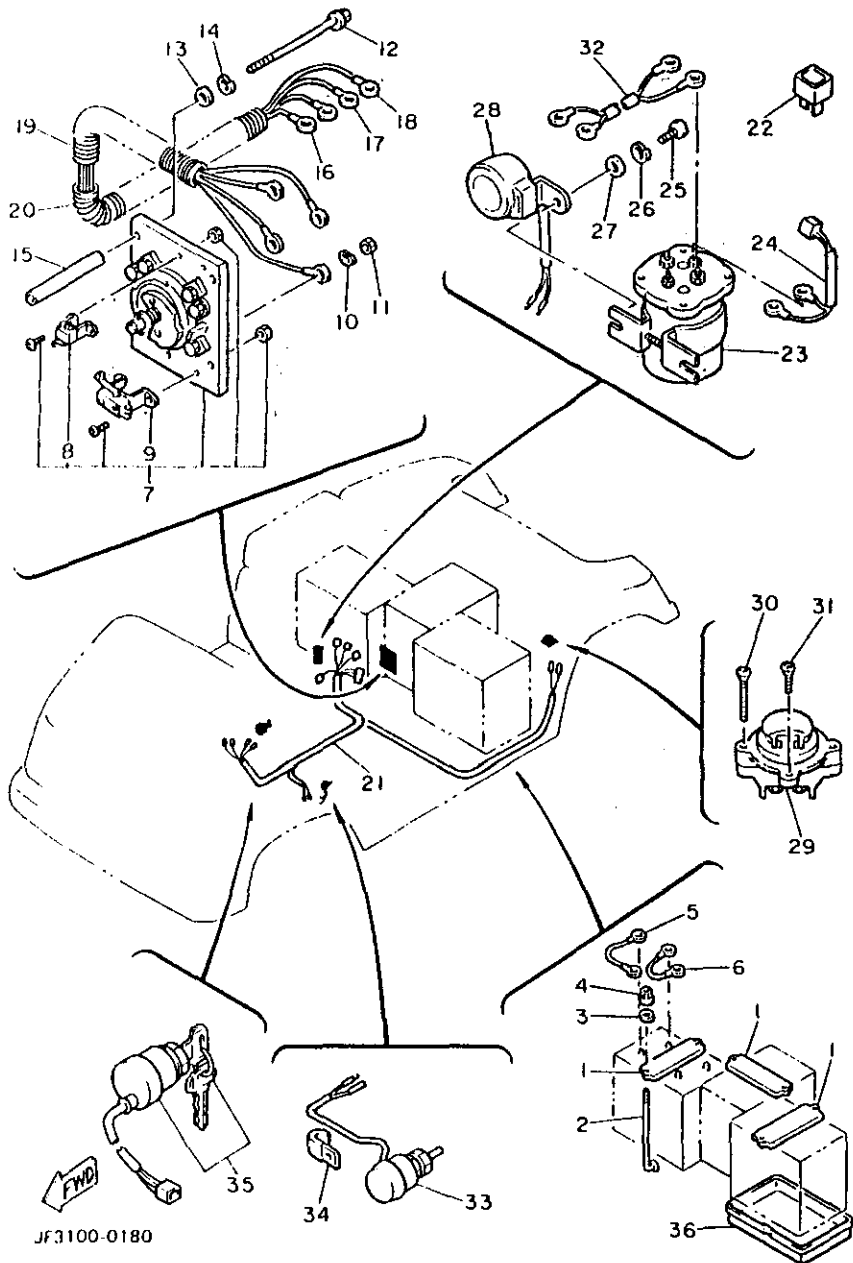
FIG. 18 ELECTRICAL 1



REF. NO.	PART NO.	DESCRIPTION	Q'TY	REMARKS
1	JF3-H2136-00	PLATE, battery fitting	3	
2	JF3-82133-00	SCREW, fitting	6	
3	90201-065G8	WASHER, plate	6	
4	95701-06500	NUT, flange	6	
5	J51-H2115-00	WIRE, plus lead	1	
6	J51-H2127-00	WIRE, lead 2	5	
7	JF3-82917-00	SWITCH	1	
8	J41-82617-00	SWITCH	1	
9	J41-82817-00	MICRO SWITCH	1	
10	92990-06100	WASHER, spring	4	
11	95303-06600	NUT	4	
12	97002-06100	BOLT	4	
13	92990-06200	WASHER, plain	4	
14	92990-06100	WASHER, spring	4	
15	90387-061W6	COLLAR	4	
16	JF3-H2521-00	WIRE, lead	1	
17	JF3-H2531-00	WIRE, lead	1	
18	JF3-H6171-00	WIRE, lead 1	1	
19	JF3-H7196-00	TUBE 1	1	
20	JF3-H7197-00	TUBE 2	1	
21	JF3-82590-00	WIRE HARNESS ASSY	1	
22	J44-81980-60	RECTIFIER 2	2	
23	JF3-H1950-00	RELAY ASSY	1	
24	JF2-82105-00	WIRE HARNESS	1	
25	98502-06016	SCREW, pan head	2	
26	92990-06100	WASHER, spring	2	
27	92990-06600	WASHER, plate	2	
28	JF3-83383-01	BUZZER	1	

JF3100-0180

FIG. 18 ELECTRICAL 1



REF. NO.	PART NO.	DESCRIPTION	QTY	REMARKS
29	JF3-86181-00	RECEPTACLE	1	
30	98706-05035	SCREW, flat head	2	
31	98706-05016	SCREW, flat head	2	
32	JF3-82105-00	WIRE HARNESS	1	
33	J41-82550-00	ENGINE STOP SWITCH ASSY	1	
34	90465-06038	CLAMP	1	
35	J55-82510-00	MAIN SWITCH ASSY	1	
36	J56-H2123-00	SEAT, battery	1	

JF3100-0180

NUMERICAL INDEX

PART NO.	GRID NO.	PART NO.	GRID NO.
JF3-F2110-00	1- 1	JF2-K7521-00	10-17
JF3-F2501-00	2- 1	JF2-K8107-00	10-13
JF2-F254R-00	2- 2	JF2-K811G-00	11- 4
J55-F3516-00	3-11	JF2-K8114-00	11-22
	3-26	JF2-K8115-00	11- 1
JF2-F3570-00	3- 1	JF2-K8121-01	15- 5
JF2-F3580-00	3-16	JF3-K8142-00	12- 1
JF2-F3811-00	4- 1	JF2-K8163-00	10- 1
JF2-F3830-00	4-23	JF2-K817U-00	10-10
JF2-F3838-00	4-16	JF2-K8174-00	10-15
JF2-F3850-00	4-28	JF2-K818A-00	13- 2
J55-F3876-00	4- 5	JF2-K8187-00	13- 8
JF2-F3871-00	5-47	JF2-K8191-00	13-10
JF2-F3872-00	5-48	JF2-K8192-00	13-11
J55-G6521-00	9-12	JF2-K821F-00	13- 4
J56-H1160-00	16-18	JF2-K8215-00	13- 3
J56-H135G-00	16-17	JF2-K8233-00	11-29
J56-H1801-00	16-12	JF2-K8237-00	12-10
J56-H1810-00	16-15	JF2-K8261-00	11- 7
J56-H1813-00	16-13	JF2-K8262-00	11- 9
J56-H182A-00	16-10	JF2-K8263-00	11-11
J56-H182G-00	16- 5	JF2-K8264-00	11-14
J56-H1822-00	16- 3	JF2-K8265-00	11-17
J56-H1824-00	16- 4	JF2-K8271-00	13- 1
J56-H1828-00	16- 2	JF2-K8283-00	12- 3
	16-16	JF2-K8284-00	12- 4
J56-H1840-00	16-11	JF2-K8340-01	14-27
J56-H1843-00	16- 7	J55-K835A-00	15-18
J56-H1846-00	16-20	JF2-K835E-00	11-26
J56-H1847-00	16- 9	JF2-K8355-00	14- 2
J56-H1848-00	16-14	JF2-K8356-00	14- 1
J56-H1850-00	16-22	J55-K8357-00	14-19
J56-H1856-00	16-19	J55-K8358-00	14-21
J56-H1857-00	16-21	JF2-K8361-01	15-10
J56-H1861-00	16- 6	JF2-K8362-01	15-11
J56-H1890-00	16- 1	JF2-K8401-01	15- 1
J56-H1894-00	16- 8	JF2-K8402-01	15-15
JF3-H1950-00	18-23	JF2-K8404-09	15- 2
J51-H2115-00	18- 5	JF2-K841G-09	15-16
J56-H2123-00	18-36	JF2-K8413-00	15-17
J51-H2127-00	18- 6	JF2-K842A-01	15- 4
JF3-H2136-00	18- 1	JF2-K8423-02	15-20
JF3-H2521-00	18-16	JF2-K8425-01	15- 3
JF3-H2531-00	18-17	JF2-K8426-00	15- 8
JF3-H6171-00	18-18	JF2-K8427-00	15-13
JF3-H7196-00	18-19	J38-W2511-00	3-38
JF3-H7197-00	18-20	J55-W2536-00	6- 2
JF2-K7511-00	10- 5		6-17

PART NO.	GRID NO.	PART NO.	GRID NO.
J17-W2561-00	5-12	J17-27206-00	6-18
J50-22123-00	1- 2	J17-27208-00	6- 1
J50-22124-00	1- 5	J17-27209-00	6-16
	1-10	J10-27211-00	5- 2
J50-22171-00	1- 4	J17-27221-00	5-13
JF2-22172-00	1- 9	J17-27228-00	5-23
JF3-22210-00	1-13	J17-27231-00	5-18
J55-2252M-00	5-34	J17-27232-00	5-19
JF3-23350-00	3-34	JF3-27241-00	17-14
J10-23444-00	4- 8	J46-27245-00	5-30
J10-23459-00	4-11	J17-27246-00	5-35
J38-23462-00	4-10	J46-27250-01	6- 1
J38-23511-01	3- 5	J55-27260-00	6-24
J38-23512-02	3- 6	J55-27270-00	6- 9
	3-21	J10-27281-00	6- 5
J38-23521-01	3-20		6-20
J38-23526-00	3- 2	J10-27282-00	6- 6
	3-17		6-21
J38-23527-00	3-10	J10-27286-00	6-10
	3-25		6-25
J38-23528-00	3-13	JF3-27445-00	17-26
	3-28	JF3-27486-00	17-20
J38-23814-00	4-14	JF3-27487-00	17-21
J38-23816-00	4- 2	JF3-27813-00	17-18
J55-23818-00	4- 9	J14-27815-00	7- 7
J38-23826-01	4-19	JF3-27825-00	17-13
J38-23836-00	4- 3	J17-27853-00	7- 2
JF2-23840-00	4-15	JF2-27854-00	7-17
J38-23841-01	4-24	JF3-27871-00	7- 5
	4-29	J22-27872-00	7- 3
J38-23845-01	4-25	J41-27874-00	7- 1
	4-30	JF3-27981-00	17-17
J10-23877-00	4- 7	J14-46311-00	8- 1
J38-24161-00	11- 2	J14-46312-02	8-12
J17-25118-00	3-46	J10-46319-00	8-18
J55-25357-00	6-30	J14-46321-01	8-21
J55-25358-00	6-15	J56-46331-00	8-22
J17-25670-01	5- 3	J10-46351-00	8-23
J17-25672-00	5-17	J56-46361-00	8-24
J17-25673-00	5-22	J17-46362-00	8-25
	5-38	JF2-46370-00	8-36
J17-25679-01	5-10	JF3-46372-00	8-42
JF2-25681-00	5-43	JF2-46376-00	8-37
JF2-25685-00	5-40	JF3-46392-00	8-39
JF3-2625H-00	17-12	J41-46394-00	8-48
J38-27204-00	6- 4	J38-46411-01	8-27
J38-27205-00	6-19	J38-46414-00	8-29
J17-27206-00	6- 3	J38-46415-00	8-30

NUMERICAL INDEX

PART NO.	GRID NO.	PART NO.	GRID NO.
J38-46417-02	8-31	JF3-86510-01	17- 1
J41-46421-00	8-28	90101-06555	5- 4
JF3-46510-00	9- 5	90101-10447	5-32
JF3-46520-00	9- 6	90105-08390	8-32
JF3-46540-01	9- 1	90105-10357	3-31
JF3-46550-00	9- 2	90105-10360	3- 7
835-47559-00	8-35		3-22
JF2-77517-00	10- 2	90106-08040	7-12
JF2-77527-00	10- 3	90109-08669	5- 7
JF2-77528-00	10- 9	90162-04002	11- 3
JF2-77741-00	12- 8	90170-08024	4-12
J50-77762-00	14-20	90170-12054	4-27
J51-77763-00	14-26		4-32
JF3-77765-00	12- 9	90170-12055	4-26
JF3-77768-00	11-25		4-31
JF2-7811V-00	11- 6	90176-06069	11-13
JF2-7811W-00	11-16	90179-07564	5- 5
JF2-7811X-00	11-19	90179-08261	5-45
JF2-78117-00	11- 8	90179-08378	5- 9
	11-10	90179-12262	3-48
	11-12		9-11
JF2-78118-00	12- 5	90185-10115	1- 3
JF2-7814A-00	2- 4		3- 8
JF2-7815G-00	11-24		3-23
J17-78157-00	14- 6		3-32
	14-11	90185-12061	4-17
JF2-78273-00	11-20	90185-12072	1- 7
J38-78367-00	14- 3		1-12
J17-78368-00	14- 7		1-15
	14-12	90201-044A2	14-23
J17-78369-00	14- 8	90201-06M02	15- 7
	14-13	90201-060A3	11-27
J14-81823-01	16-23	90201-063J2	10-12
J44-81980-60	18-22	90201-065G8	18- 3
JF2-82105-00	18-24	90201-06643	16-32
JF3-82105-00	18-32	90201-08103	14-29
JF3-82133-00	18- 2	90201-104G8	5-29
J55-82510-00	18-35	90201-121H8	6-14
J41-82550-00	18-33		6-29
JF3-82590-00	18-21	90201-121H9	6-13
J41-82617-00	18- 8		6-28
J41-82817-00	18- 9	90201-123F2	5-26
JF3-82917-00	18- 7	90201-156J2	3-12
JF3-83383-01	18-28		3-27
25G-83936-00	5-55	90201-19551	8-41
JF3-85885-00	17- 8	90201-201L9	8-38
JF3-86181-00	18-29	90201-20272	8-26
JF3-86501-01	17- 2	90209-32271	3-43

NUMERICAL INDEX

PART NO.	GRID NO.	PART NO.	GRID NO.
90215-16252	4-21	90508-40543	5-31
90249-14129	5-44	91401-25020	3- 9
90267-48084	15- 9		3-24
	15-12		3-33
90267-48086	13- 5		3-45
	13- 7		4-34
90267-48101	13- 9	91402-20012	7- 9
	13-12	91490-25015	5-52
90267-48154	13- 6	91490-30015	5-42
90267-63047	10-11	91609-35028	3-15
	11-30		3-30
	12-12		7-14
90267-08066	11-23	91609-40040	8-34
	12-11	91609-60028	3-14
90269-08067	12- 2		3-29
90269-11042	11-21		7- 4
90338-17170	3- 3	91701-08018	5-50
	3-18	91701-08026	5-51
90340-14036	8-19	91701-10022	5-41
90380-12105	5-28	91812-16001	8-33
90381-06033	7- 6	92580-06010	14-16
90384-14080	7-15	92901-05600	5-24
90386-06108	14- 9		17- 5
	14-14		17-11
90386-15139	3- 4		17-24
	3-19	92901-08600	8- 8
90387-046N7	14-25		8-11
90387-050X4	7-18	92901-10100	8-46
90387-061W6	18-15		9- 8
90387-107F8	5-39	92901-12100	1- 8
90387-241M7	3-41	92902-08100	5- 8
90430-14043	8-20		5-37
90461-12117	5-53		6-32
90462-20186	1-16		9- 4
90465-06038	17- 7		10- 7
	18-34		16-28
90465-08316	8-47	92902-12200	4-18
90480-85523	12- 7	92990-05100	17- 4
90502-10013	14-24		17-10
90506-12277	5-21		17-23
90506-20281	6- 7	92990-06100	1-18
	6-22		6-11
90506-26191	6- 8		6-26
	6-23		7-11
90508-26282	7-22		7-21
90508-14548	5-16		8-44
90508-23542	5- 6		14-17
90508-26557	5-27	92990-06100	16-25

NUMERICAL INDEX

PART NO.	GRID NO.	PART NO.	GRID NO.
92990-06100	16-31	95701-06500	18- 4
	17-15	95701-16300	4-20
	18-10	95706-08500	10- 4
	18-14	95801-06012	5-54
	18-26	95801-06020	4-13
92990-06200	14-18	95801-08016	2- 3
	18-13	95805-06020	15-14
92990-06600	7- 8		15-22
	16-26	95805-08016	14-28
	18-27	95812-10050	4-22
92990-08100	8- 7	95812-12065	1- 6
	8-10		1-11
92990-08200	5-11		1-14
92990-08600	10- 8	95815-08075	15-21
	16-29	95816-08016	10-14
92990-10600	5-14		10-16
	9- 9		10-18
93102-20143	8-13	97001-06025	7-10
93102-22189	8- 5		7-23
	8-16	97002-05016	17-22
93102-22314	4- 4	97002-06100	18-12
93102-30083	3-42	97002-10050	3-36
93210-14104	7-16	97002-10065	3-35
93306-00511	3-40	97003-06012	1-17
93306-00803	8- 4	97011-08016	16-27
	8-15	97011-08025	9- 3
93306-20401	8- 3	97011-10020	8-45
	8-14		9- 7
93306-20437	3-39	97012-08016	6-31
93306-20541	8- 2	97021-06016	7-20
93332-00010	4- 6		8-43
95023-06016	17- 6		16-24
95303-06600	6-12	97021-08035	8- 6
	6-27	97021-08045	8- 9
	17-16	97313-08020	5-36
	18-11		10- 6
95303-06700	5-20	97322-06055	16-30
	7-24	97702-60130	11-28
95303-08700	5-46	97706-40525	14-22
	7-13	97780-60116	12- 6
	17-25	97780-60125	15- 6
95380-06800	14- 5	97780-60325	15-19
95601-06100	11-15	98501-05016	17- 9
	11-18	98501-05018	17- 3
95601-14100	3-44	98502-06016	18-25
95602-10100	3-37	98706-05016	18-31
	4-33	98706-05035	18-30
95602-10100	5-33	98906-05012	7-19

PART NO.	GRID NO.	PART NO.	GRID NO.
98980-06016	11- 5		
	14- 4		
99002-09600	5-49		
99009-19400	8-40		
99080-04600	5-25		
	17-19		
99080-05600	14-10		
	14-15		
99080-07600	5-15		
99510-12016	8-17		